

AGRICULTURE ADVENTURES FOR FAMILIES



December is a month typically filled with friends, family, and food. This December also finds reason for a special celebration with the 200th birthday of Illinois. We wanted to take a flashback to some sweet treats that had their beginnings in Illinois and in our county, right here in Chicago. As you reach for a gift this month, you may find a package of Pixies or Peppermints for that special someone, so sit back and enjoy a few fun facts associated with them. Happy Holidays to our Family Adventure readers and good luck on the last word search of the year!!

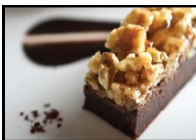


The Palmer House Brownie

PALMERHOUSE
A HILTON HOTEL

Many experts agree that the first presentation of the brownie as we know it today came about in 1893 at the Palmer House Hotel in Chicago's Loop. And there's a lot more history involved than just the fact of a long-ago recipe being developed in the city. Brownies came into being because socialite and philanthropist Bertha Palmer was head of the Board of Lady Managers for the 1893 World's Columbian Exposition. She directed Palmer House pastry chefs to come up with a recipe for a dessert that would be easy to transport in boxed lunches at the Women's Pavilion.

The desserts were a hit, but they weren't called brownies. The first mentions of brownies in American cookbooks don't come until several years later. But the dessert she had created was a part of one of the most important events in Chicago history, the Columbian Exposition, held to celebrate the 400th anniversary of Christopher Columbus' arrival in the New World, and to showcase Chicago's recovery from the Great Chicago Fire in 1871. It's still being made, from the same 1893 recipe, at the hotel now known as Palmer House, a Hilton Hotel, one of the grande dames of the city's hospitality industry.



Source: www.forbes.com/sites/terricolby/2018/08/31/taste-the-palmer-house-brownies-for-a-bit-of-chicago-history



Chicago Origins: 1920

Fannie May Confections Brands, Inc. began as a single candy shop in 1920. H. Teller Archibald and his wife Mildred Archibald opened Fannie May on Chicago's North LaSalle Street, in the heart of the city's central business district, the Loop.

Funding for the enterprise evidently came from Mrs. Archibald's family, and the business was very soon a Chicago success. Chicago had a thriving candy industry, which had taken off after the Columbian Exposition in 1893. While most candy makers of that era were small, family-run businesses, new technology introduced in the early 1900s made larger enterprises possible. New equipment enabled manufacturers to mass-produce candies of uniform dimensions and quality. Around the turn of the century, Chicago was home to many large-scale candy companies, such as E. J. Brach & Sons, Wrigley's Gum, Ferrara Pan Candy, and Mars. Cracker Jacks originated in Chicago, as did Frango Mints, the delicacy sold at Marshall Field's department stores. According to Joel Glenn Brenner, author of *The Emperors of Chocolate: Inside the Secret World of Hershey and Mars*, the Archibalds chose Fannie May as the name of their shop to give it a consciously old-fashioned ring.

In 1946, just after World War II, Fannie May created its most well-known candy to date, the Pixie, by hand-pouring caramel over nuts and then placing them on a conveyor belt to be drenched in chocolate. Today, that combination of caramel and crunchy pecans covered in chocolate is one of the company's best sellers. Throughout the years Fannie May has developed candies that often become the center of many family and holiday traditions.



Source: www.referenceforbusiness.com/history2/31/Fannie-May-Confections-Brands-Inc.html

Brach's Candy

In 1904, Emil J. Brach opened his "Palace of Sweets" at North Avenue and Towne Street in Chicago. The output of this candy factory grew quickly, producing more than 25 tons a week by 1911 and 1,000 tons a week by 1918. In 1922, the company built a large new plant on the city's West Side; this facility, the largest candy factory in the United States, soon employed hundreds of men and women. Brach's annual sales grew from about \$8 million in 1925 to \$22 million in 1945 and \$62 million in 1961. In 2007, the company was sold to the Farley's & Sathers Candy Company, which in turn merged with the Ferrara Pan Candy Company in 2012 to form the Ferrara Candy Company.



Source: www.encyclopedia.chicagohistory.org/pages/2576.html

Lemonhead



The company was started in 1908, and Nello Ferrara took it over from his father decades ago. The company, which also makes Red Hots and Boston Baked Beans, produces a million pounds of candy a day. Sal Ferrara's grandfather, the original Salvatore Ferrara, founded the business in 1908 on Taylor Street selling the candy-coated almonds known as "confetti" that symbolize good luck at Italian weddings. Nello Ferrara created spicy-hot Atomic FireBalls after serving in Occupied Japan in the post-atom bomb era. He developed Lemonheads in 1962, saying he got the idea after his son was born with a head shaped like a lemon.

"When my father was born, my grandfather always said he was too stubborn to come out on his own," Alana Ferrara said. "They had to use forceps, and he said, 'My son's head looks like a lemon.'"

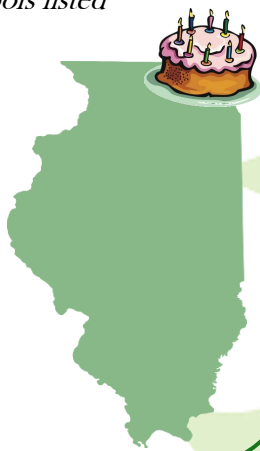
"He always claimed that when I was born, that I came out of my mother sideways," the younger Mr. Ferrara said, "and my head

www.nytimes.com/2012/02/10/business/nello-ferrara-creator-of-lemonheads-candy

How well do you know your state?

See if you can identify the state symbols listed

Bird	Capital
Fruit	Soil
Flower	Tree
Insect	Pie
Snack	
Prairie Grass	



What kind of pine has the sharpest needles?

A Porcupine!



Choose your prize:

Choices include a \$25 Beggar's Pizza Gift Card, a \$25 Home Run Inn Gift Card, OR *3 AMC Movie Tickets *AMC Yellow tickets not valid in California, New York & New Jersey.

Complete the Word Search puzzle for your chance to win! Winners will be contacted by mail.

Mail to: Cook Co. Farm Bureau

Ag Adventures Word Search

6438 Joliet Rd

Countryside, IL 60525

Fax to: 708-579-6056

Email to: FBCooperator@gmail.com

Complete and submit an entry every month all in 2018 and your name is automatically entered into an "End of Year" drawing for a gift basket full of ag themed goodies. Good luck!



Last month's word search winner is....



Charlene Dorsey

Congratulations

December Word Search

Z T I N M G D L L N B B T U L
G H N V I R U A E I E E C H U
C O I I U K N Z G Q L R C A C
I J L M M I P B N O V T M C C
D P M D D R L M I W T H Q D H
L E C R R U E V U U A A M Y S
R T A H E U V P L P E P O L T
P C U S I I S K P I O A N F O
I Q T G B C J H H E I L A R H
F E B T E Y A K A P P M R E D
M P I X I E M G Z P P E C T E
W H I T E O A K O H P R H T R
D L E I F G N I R P S L O U G
N R O C P O P K B C L M E B C
K Q E T N H K O Y T X O M O R

Bertha Palmer
Big Blue Stem
Butterfly
Cardinal
Chicago
Drummer
Goldrush Apple
Monarch

Peppermint
Pixie
Popcorn
Pumpkin
Red Hots
Springfield
Violet
White Oak

Name: _____

Phone #: _____

Membership #: _____

(Membership # is located on front of paper)

If you were to win, check your preference:

___ Beggar's Pizza GC ___ HRI GC ___ 3 Movie Tix

(If a choice is not made, movie tickets will be sent)

Deadline is the 20th of each month.