



# Co-Operator

official publication of the Cook County Farm Bureau®



Scan for more farm bureau info. & events

A "staple" in the Farm Bureau member's home since 1938

**Mission:** To serve all members of the Cook County Farm Bureau® with meaningful and beneficial programs that reflect our Agricultural Heritage.

Vol. 93 No. 1

Countryside, IL 60525

[www.cookcfb.org](http://www.cookcfb.org)

January 2019

## Mark Your Calendar

### JANUARY

- 1st Community Urban Garden Grant Program Opens pg. 8
- 9-11th Illinois Specialty Growers Association pg. 11
- 15th Book Club for Adults & Educators pg. 12
- 22nd Book Club for Adults & Educators pg. 12
- 29th Book Club for Adults & Educators pg. 12
- 30th Disney on Ice - through February 3rd pg. 10

### FEBRUARY

- 6th Book Club for Adults & Educators pg. 12
- 15th CCFB Foundation Scholarship Program pg. 12
- 21st Ronald McDonald House Food Check Out Day pg. 1

### MARCH 2019

- 9th CCFB Foundation's "Farming for Our Future" Fun/Raiser pg. 1
- 9th & 10th Beginning Beekeeping Course pg. 11

### APRIL 2019

- 6th & 7th Advanced Beekeeping Course pg. 11

For participation details on these programs and activities, check out the related information in this publication, go to [www.cookcfb.org](http://www.cookcfb.org), or contact the office at 708-354-3276.

You can register for most programs using the member service center at [www.cookcfb.org](http://www.cookcfb.org).

## Help us Celebrate Food Checkout Day by Partnering with us to Support Ronald McDonald House Charities®

### Help with this Annual Charity Effort!

With Food Checkout Day scheduled for February 21, 2019 Farm Bureau families and partners have joined together to assist families during the most difficult time of their lives, when a child is ill. Food Checkout Day highlights the safe and nutritious food that local farmers grow.

Through YOUR support we've been able to ensure that a healthy, nutritious meal is not a concern of theirs during these times. Help us to collect non-perishable food, money, and pop tabs. Food, cash, and pop tab donations can be dropped off or mailed to:

Cook County Farm Bureau®  
6438 Joliet Road  
Countryside, Illinois 60525  
708-354-3276

Since our partnership began in the early 1990's, we've been able to donate almost \$130,000 to the five area Ronald McDonald Houses. Due to your efforts, Ronald McDonald Houses remain open to all families regardless of an individual's ability to pay.

Please partner with us to raise much needed funds for the Ronald McDonald House Charities® of Chicagoland and Northwest Indiana in support of Food Checkout Day. All proceeds raised will benefit the charity.

### Sponsorship Information for Food Checkout Day 2019

Food Checkout Day highlights the safe and nutritious foods that local farmers grow. Through our partnership with Ronald McDonald House Charities® of Chicagoland and Northwest Indiana, supporters are able to assist families during the most difficult time of their lives, when their child is ill.

Please consider partnering with us to raise much needed funds for the Ronald McDonald House Charities® of Chicagoland and Northwest Indiana. All proceeds raised will benefit the charity.

**Sponsorships are available at the following levels:**

#### Veggies Sponsor

Includes advance promotions, event signage, media, and social media inclusion.  
\$500

#### Sweet Corn Sponsor

Includes promotion on cart signs at Chicago and Oak Lawn grocery store events, signage, media, and social media inclusion.  
\$250

#### Grains Sponsor

Includes event signage, media, and social media inclusion.  
\$150

### FOOD CHECKOUT DAY SPONSORSHIP 2019

- \$500 Veggie Sponsor
- \$250 Sweet Corn Sponsor
- \$150 Grains Sponsor
- Other amount (list amount here) \$\_\_\_\_\_

Company/ Individual Name: \_\_\_\_\_

(As you wish it to appear in publications or on signage)

Contact Person: \_\_\_\_\_

Phone: \_\_\_\_\_

Email Address: \_\_\_\_\_

Mailing Address: \_\_\_\_\_

City: \_\_\_\_\_

State: \_\_\_\_\_ Zip Code: \_\_\_\_\_

If affiliated with a Country Financial Agency, please indicate: \_\_\_\_\_

Please make checks payable to: Cook County Farm Bureau®. All proceeds will be donated to Ronald McDonald House Charities® of Chicagoland and Northwest Indiana.

For more information contact Bona Heinsohn at the Cook County Farm Bureau® at 708-354-3276 or [bona@cookcfb.org](mailto:bona@cookcfb.org).

## Question of the month:

Who was presented the Illinois Farm Bureau Eagle Award for Excellence in December 2018 at the IFB Annual meeting in Chicago??

☆Bonus☆:

What page of this publication is CCFB mascot Corny Calvin "hanging out" on this month?

Call the Farm Bureau at 708-354-3276, fax your answer to 708-579-6056 or email to [fbcooperator@gmail.com](mailto:fbcooperator@gmail.com) to enter the drawing for a \$25 gas card. **(Please include Name, FB# and phone number)**

December winner is [Mary Vancak](#)

What is the name of the teacher from local Westchester Middle School that was one of the finalists for the 2018 Ag in the Classroom teacher of the year?

Answer: Cathy Malloy

THE COOK COUNTY FARM BUREAU® FOUNDATION  
CORDIALLY INVITES YOU TO THE 3RD ANNUAL

*Farming for our Future  
Fun'Raiser*

*A benefit for farm and food literacy in Cook County*

Saturday, March 9, 2019

6:00 PM - 11:00 PM

Gaelic Park Tara Room  
6119 147th Street  
Oak Forest, Illinois

\$60 DONATION PER PERSON

\$75 DONATION AFTER 2/15/19

\$600 DONATION FOR A TABLE OF 10

Only 250 tickets\* available  
\*Each ticket purchased is also an entry for a door prize valued from \$100-\$500.

The evening includes a buffet dinner, 4 hour bar (draft beer, wine and pop) from 6:00-10:00 pm, dueling pianos, door prizes, silent/live auction, lucky chance and 50/50 opportunities!

Call 708.354.3276 to order tickets or for more info, go to [www.cookcfb.org/foundation](http://www.cookcfb.org/foundation)

CASUAL ATTIRE WELCOME





# Board Selects Leadership Team for Next Year



At the December meeting of the Cook County Farm Bureau, the Board of Directors elected its leadership team for the next year. Ms. Janet McCabe, Orland Park, was re-elected by the Board to serve as the organization's President, a position she has held for the past year. McCabe and her husband Joe, farm in the southern Cook County area and northern Will County raising corn, soybeans, wheat and marketing hay/straw. She has served on the Cook County Farm Bureau Board since 2011 and has been a part of the organization's Team structure since it was created in 2005. She has served in a variety of leadership roles including Secretary/Treasurer, Governmental Affairs Team, Political Action Committee, Public Relations Team, Audit Committee, and Building Committee. She has served as a director on the Cook County Farm Bureau Foundation® Board. In addition to her on-farm role, Janet is a Registered Nurse and has been practicing for over 30 years.

McCabe said, "I welcome another term to continue working on our goals of having the importance of agriculture in everyone's daily life recognized. I am also looking forward to optimizing our volunteer base and their contributions to the organization."



Mr. Mike Rauch, Tinley Park, was re-elected to the Executive Committee as the Vice-President of the Board. Mike Rauch has been a member of the CCFB Board of Directors since 2003 and has served as Vice-President since 2011. Mike raises corn and soybeans in south Cook County and has been active in agriculture for the past 35-plus years. He is married to Laura. Mike has led a number of the

Teams over the years. Currently, Mike serves as Chairman of the Public Relations Team, is on the Ag Literacy Team and Building Committee and is on the Cook County Farm Bureau Foundation Board of Directors. He holds a Bachelor's and Master's degree from University of Illinois.



Ms. Ruth Zeldenrust, Chicago Heights, was elected to the post of Secretary-Treasurer by the Board. She is also Chair of the Audit Committee. She has been a member of the CCFB Board of Directors since 2011 and has been a part of the organization's team structure since it was created in 2005. She currently serves as Chair of the Governmental Affairs Team. She owns and operates Zeldenrust Farm Market and Greenhouses, raising local fresh vegetables and flowers/bedding plants in south Cook County.

Joining these three leaders on the Executive Finance Committee for the next year will be board members Gerry Kopping (left), Lemont, and Dan Biernacki (right), Tinley Park. The Executive Finance Committee holds the responsibility of the budgeting, finance, personnel, and day-to-day oversight of the organization.

From the Board of Directors, the following leaders will head up programming committees of the organization: Mike Rauch, Public Relations Team; Gerry Kopping, Commodities/Marketing Team; Jim Bloomstrand, Member Relations Team; Tim Stuenkel, Ag Literacy Team; and Ruth Zeldenrust, Governmental Affairs Team.

# Todd Price Joins CCFB Board



Todd Price

Todd Price was elected to the Cook County Farm Bureau Board of Directors at the December 12, 2018 Annual Meeting of the organization. Todd grew up on a grain and livestock farm in Iowa that has been in his family since 1854. He was a 4-H member for a number of years (and has served as leader for the Glenview Clovers 4-H Club for the past 17 years) and he remains an active participant in the family farming operation today. Todd began his working career in the public schools and then found a path in the museum world where he combined his love for agriculture, education and history. He worked for a number of farm museums across the Midwest and landed at Wagner Farm in Glenview in 2001. Todd currently serves as a superintendent within the Glenview Park District. He has volunteered on the Ag Literacy team for many years and has been quite active in educating students during Ag Days and other Farm Bureau public outreach programs as well as through his work at Wagner Farm. Todd is a 2014 graduate of the Illinois Agriculture Leadership Program. He is married to Laura and is a proud father to Cassidy.



- Horses have lived on Earth for more than 50 million years, evolving from much smaller creatures
- The four natural gaits, or speeds, of a horse are walk, trot, canter, and gallop.
- The average life span of a horse is 20-25 years.
- The height of a horse is measured from the ground to their withers, which is the high point between a horse's shoulder blades.
- The difference between a horse and a pony is that ponies have bigger heads, stockier legs, and are smaller than a horse.
- Out of over 400 breeds of horses, the most popular breed is the Arabian
- Horse hooves are made from the same protein that fingernails and human hair are made from.
- A male horse is called stallion, and a female horse is called a mare.
- Typically, a horse only sleeps 2.5-3 hours per day.

# Gracias THANK YOU Gratiſied

## The Gratitude Box

*Each month, there are people that go out of their way to lend a hand to help with our cause in many ways, big and small. We appreciate it greatly!*

*The Cook County Farm Bureau thanks...*

- Sheri Latash for representing the Commodities/Marketing Team during the winter pot planting workshop and demonstration at West End Greenhouse and Florist in Evanston last month.
- Farm Bureau ag literacy team members and presenters who volunteered to judge the Chicago High School for Ag Sciences December Science Fair.
- The Jackson County Farm Bureau for inviting us to visit their adopted classroom at CICS Wrightwood School to help teach about ag and pizza.
- St. Alphonsus Saint Patrick School in Lemont for conducting an early collection of donations to kick off our School Food Drive for the Ronald McDonald House Charities® which begins this month.
- Dean Reszel (right), Orland Park Agency Country Financial Rep, on his retirement after celebrating 32 years of quality service to Farm Bureau members and Country Financial clients.
- Jessica Biernacki and Janet McCabe for their induction into the prestigious CCFB Master Membership Club by recruiting a number of new Cook County Farm Bureau members into the organization in 2018.
- Ruth Zeldenrust, Dan Biernacki, Gerry Kopping, Jim Bloomstrand and Karen Biernacki for their 2nd year re-induction into the Master Membership Club for their recruitment of members into the organization in 2017 and 2018.
- The many Master Gardeners that staffed the office during 2018 growing season answering member questions about horticulture, agriculture, soil, insects and trees... Great service provided by all!



Gratitude Appreciative Thanks

Recognition Appreciative Gratitude

# Gracias THANK YOU Gratiſied

### Co-Operator

published monthly  
Cook County Farm Bureau  
6438 Joliet Road, Countryside, IL 60525  
(ph) 708-354-3276 (fax) 708-579-6056

(e-mail) ccfb@cookcfb.org (website) www.cookcfb.org  
USPS No 132180 Periodical Postage Paid at LaGrange, IL 60525 & additional mailing office

**Editor** Bob Rohrer  
**Copy Analyst** Ashley Christensen  
**Copy Development** CCFB Office Staff

**Officers & Directors**  
Janet McCabe, President  
Michael Rauch, Vice President  
Ruth Zeldenrust, Secretary-Treasurer  
Dan Biernacki James Bloomstrand Roger Freeman  
Patrick Horcher Gerald Kopping Tim Stuenkel  
Mark Yunker James Gutzmer Todd Price

**Farm Bureau Manager**  
Bob Rohrer

**Office Staff**  
Melanie Paffumi Bona Heinsohn Katie Smith  
Juanita Ramos Bob Heine Debbie Voltz  
Diane Merrion Kelli McSherry Jill Drover

**Affiliated Companies**  
Jeff Orman ..... Insurance Agency Manager, South Holland  
Victoria Nygren..... Insurance Agency Manager, Chicago North  
Marc Rogala ..... Insurance Agency Manager, Chicago South  
Jack Smith ..... Insurance Agency Manager, Chicago Northwest  
Sharon Stemke ... Insurance Agency Manager, Chicago Northeast  
Cary Tate ..... Insurance Agency Manager, Orland Park  
John Tuttle ..... General Manager, Conserve FS  
Postmaster - Mail Form 3579 to 6438 Joliet Road, Countryside, IL 60525  
"Co-Operator" (USPS No 132180) is published monthly as a membership publication for \$2.50 per year to members as a part of their annual membership dues by Cook County Farm Bureau, 6438 Joliet Road, Countryside, IL 60525. Periodical postage paid at LaGrange, IL and additional mailing office. Postmaster: send address changes to the Co-Operator, 6438 Joliet Road, Countryside, IL 60525.

The "Co-Operator", the monthly publication of the Cook County Farm Bureau®, is available to members through mail delivery, email, or by viewing online at www.cookcfb.org. Members that wish to receive the publication solely by email can let us know by sending an email to juanita@cookcfb.org with the subject: E-Cooperator.





# Downwind

by Bob Rohrer, CCFB Manager

## “Family Legacy”

When I was young, I remember my grandfather working constantly, farming from sunup to sundown. So why did he take time off during his busiest season to be the first person to ever take me, his young grandson, fishing? Equipped with a Bamboo pole and worms, I remember catching two massive 5-inch bluegills.

Thank you, Grandpa! I have loved fishing ever since. I wonder if he realized the impact it made on his grandson. Now, 50 years later, I get it. A grandfather’s “family” legacy?

When my kids were younger, their grandfather (my Dad, the Farmer) created and held a tractor driving competition on the farm. Now in their 20s, my kids still remember the experience with great fondness and argue about who won the competition and the title of “Best Tractor Driving Grandchild”. A grandfather’s “family” legacy?

In December, my daughter sent me text message asking if I thought I’d have time or would want to make a “tyke tower” for my grandson Evan. It is a good thing she sent me a photo of a “tyke tower” because I had never heard of such a thing. Basically, it is an enclosed stepstool so that a young child can stand at counter level safely while serving as “mama’s little helper”. (Apparently, a child standing on a chair at the kitchen counter is no longer an approved helper device.)

It took me less than 5 seconds to respond, “Of course!”

Examining the tower photo my daughter sent, I estimated dimensions, sketched a plan, picked up some pine lumber and hardware, cut and assembled the tower, sanded and coated it with polyurethane, all in 3 days (see pictured to right). Why can’t I be that efficient and driven by the other numerous projects on my list? A grandfather’s “family” legacy?

Family and legacy...what’s carried from generation to generation? Love of the soil? Work ethic? Family relationships? Nature and the outdoors? Independence?

Farming is truly a family legacy with unique traditions and lifestyles that continue today.

Statistically, well over 90% (I’ve seen numbers published as high as 97%) of all farming operations in the United States are family-based. Unfortunately, the unpredictable farm economy over the years has caused some young people not to return to farming as their profession, eroding the number of farmers in our country.

The fact that today’s farms are mostly family-based surprises people. Many farms are incorporated due to multi-family involvement, liability protection, tax structure, and other small business reasons while maintaining family-based control, direction, management, labor and involvement (and legacy).

I was thinking about family and farm legacy when I recently attended a Farm Bureau colleague’s funeral. During the service, so many wonderful stories were shared that demonstrated the impact that Bruce had within the Farm Bureau organization, the local farming community, and on his family. During the service, in a unique moment of the ceremony, time was taken to baptize Bruce’s newly born grandson. From sorrow and mourning of the loss of Bruce, came the uplifting celebration of another generation. A grandfather’s “family” legacy.

Across farm country, grandparents, fathers, and mothers continue their farming legacy through intergenerational family connections, traditions, stories, and by sharing farming responsibilities with sons and daughters, nephews and nieces, grandsons and granddaughters. Many times, a farm is held within the family for centuries, becoming an important part of the family legacy.

My family still farms the land that my grandfather and great grandfather farmed. While I am not a farmer and my kids don’t farm, farm visits and carrying on the traditions and values and stories of family and the farm will help ensure the Rohrer family legacy of farming does not need to end.

For Evan’s first birthday, as grandparents, we tried to implant early “farm legacy” through farm books and farm toys (not real subtle). Now, I’m pretty sure my grandson wants a bamboo fishing pole for his 2nd birthday. I believe I can find time to help him catch a bluegill. A grandfather’s family legacy!

Bob can be reached at [brohrer@cookcfb.org](mailto:brohrer@cookcfb.org).



Jessica Biernacki (far left) and Janet McCabe (far right) were inducted into the CCFB Board’s Master Member Club for signing up new voting members in 2018. Inducted last year and remaining in the club (center L to R) were Jim Bloomstrand, Ruth Zeldenrust, Dan Biernacki and Karen Biernacki (Gerry Kopping not pictured).



### 2019 Cookfresh® Recipe Collection Recipes Wanted!

The 2019 Cookfresh Recipe Collection is looking for your favorite recipes that you prepare using the freshest locally grown ingredients. Recipes submitted will be included in a special drawing to win a \$50 gift certificate to a member Farm Stand or grocery retailer near you.

Mail or email your recipe along with your name and phone number by **March 15<sup>th</sup>** to:

Email: [membershipdebbie@cookcfb.org](mailto:membershipdebbie@cookcfb.org),

Mail: Cook County Farm Bureau, Attn: Recipes, 6438 Joliet Rd, Countryside IL 60525



## Your Orland Park Agency



**Cary Tate**  
708-226-1111  
Agency Manager  
Orland Park, IL



**Piero Setta**  
708-226-0431  
7601 W. 191st St  
Tinley Park, IL



**Jim Andresen**  
708-633-6490  
17605 S Oak Park Ave  
Tinley Park, IL



**Thomas Geraghty**  
708-425-9700  
5003 W 95th St  
Oak Lawn, IL



**Mark Wright**  
708-403-2416  
7601 W. 191st St  
Tinley Park, IL



**George Parthemore**  
708-226-1896  
9432 W 143rd St  
Orland Park, IL



**Dean Reszel**  
708-478-3136  
11056 W 179th St  
Orland Park, IL



**Mike Skrabis**  
708-226-1666  
9731 W 165th St  
Orland Park, IL



**Tony Palumbo**  
708-403-5708  
7601 W. 191st St  
Tinley Park, IL



**Mike Spadoni**  
708-425-1825  
3923 W. 95th st  
Evergreen Park, IL



**Bob Johnson**  
708-226-1896  
9432 W 143rd St  
Orland Park, IL



**Dan Stumpf**  
708-614-1688  
17605 S Oak Park Ave  
Tinley Park, IL



**Bill Thompson**  
708-361-1304  
12130 S Harlem Ave  
Palos Heights, IL



**Nora Beverly**  
708-429-7789  
17605 S Oak Park Ave  
Tinley Park, IL



**Brian Zielinski**  
630-257-6100  
106 Stephen St  
Lemont, IL



**Nick Burke**  
708-425-1816  
3923 W. 95th st  
Evergreen Park, IL



**Mike Thauer**  
708-425-1559  
3923 W. 95th st  
Evergreen Park, IL



**Erica Storrs-Gray**  
708-671-1465  
12130 S Harlem Ave  
Palos Heights, IL



**Terry LaMastus**  
708-754-5900  
3308 Chicago Rd  
Steger, IL



**Joe Voves**  
708-425-1527  
3923 W. 95th st  
Evergreen Park, IL



AUTO | HOME | LIFE | BUSINESS | RETIREMENT

Auto, Home, and Commercial policies issued by COUNTRY Mutual Insurance Company®, COUNTRY Casualty Insurance Company®, or COUNTRY Preferred Insurance Company®. Life insurance policies issued by COUNTRY Life Insurance Company® and COUNTRY Investors Life Assurance Company®. Fixed Annuities issued by COUNTRY Investors Life Assurance Company®. All issuing companies are located in Bloomington, IL.

9731 W 165th St Suite 36 Orland Park, IL 60467  
**708-226-1111**

0417-510HO

### Recipe of the Month: Freeman Fence Slow Cooker Chili

- 1 ½ lb lean ground beef
- 1 onion, chopped
- 1 small green bell pepper, chopped
- 2 cloves garlic, minced
- 2 c fresh tomatoes, diced with liquid (14.5 oz can)
- 2 c red kidney beans, cooked (16 oz can)
- 2-3 t chili powder
- 1 t salt
- 1 t pepper
- 1 t ground cumin

Cook beef, onion, bell pepper and garlic together in a skillet on med-high heat until beef crumbles and no longer pink. Place drained beef mixture in a 5-quart slow cooker and add remaining ingredients and cook on high for 3-4 hours or on low for 6 hours.

Recipe reprinted with permission from member, Freeman Fence Co of Brookfield found in our 2018 Cookfresh Recipe Collection Brochure, available online at [www.cookcfb.org/discover-local/recipes](http://www.cookcfb.org/discover-local/recipes).

You can submit your recipes for the 2019 Cookfresh Recipe Brochure by mailing to the Farm Bureau or to [membershipdebbie@cookcfb.org](mailto:membershipdebbie@cookcfb.org).



# From the Farm Desk

**PRITZKER NAMES AG ADVISORY TEAM** (Pantagraph) – Governor-elect J.B. Pritzker named 22 ag leaders to his ag advisory committee. Illinois Farm Bureau President Richard Guebert, Jr. was named to the committee, as well as Illinois Soybean Association CEO Craig Ratajczyk, Illinois Corn Growers Association Executive Director Rodney Weinzierl, and ADM CEO Juan Luciano. Committee co-chairs are Colleen Callahan, former state director for USDA Rural Development, and former state senator John Sullivan.

**CARGILL TESTING ROBOTIC CATTLE DRIVER** (NPR's The Salt) – Working with livestock is dangerous, but Cargill is hoping to remove some of that danger by hiring some new employees: robots. Developed by a Russian tech company for security purposes, Cargill has redesigned robots to include a tougher metal exterior and an MP3 player which whistles, or a device which produces a gust of air, to move cattle forward. The robot has been tested at plants in Nebraska and Pennsylvania.

**FUEL INFORMATION ON CAR/TRUCK ENGINES** (Illinois Corn Growers Association) - Whether you have a new model year vehicle, or you have a new-to-you vehicle, you should know if it can flex. The Renewable Fuels Association has released their updated chart of passenger vehicles that are FlexFuel compatible, meaning that you can fill up year-round with any ethanol blend from regular, unleaded E10 all the way up to E85, a blend of 85 percent ethanol and 15 percent petroleum-based gasoline. The FlexFuel fleet is an important bridge to the fuels of the future. IL Corn is investing checkoff dollars in developing new fuels and engines that to be high efficiency and with an improved emissions profile, will require high-octane gasoline. Corn-based ethanol is the best option to provide octane.

**U.S. POULTRY PRODUCTION GROWING, MARKET EXPANSION CRUCIAL** (FarmWeek) - Chickens grow out in six to eight weeks and a little longer for turkeys. "Hormones are something we can't and don't use in the poultry industry. It's banned," Tyler noted recently. "Regardless, you get people talking about growing chickens so fast in six to eight weeks using hormones. "That's far from the truth," he added. "It's just good genetics and the grain we're feeding them. We've got a great system for producing the product." The poultry industry consumes about one-third of the corn produced in the U.S.

About 20 percent of chicken and 14 percent of turkey produced in the U.S. gets exported each year. Trade issues in China remain a major issue for the poultry industry. China previously imported about \$800 million in U.S. poultry products, including about



\$300 million worth of chicken paws, before blocking that market due to concerns about avian influenza. Elsewhere, the poultry industry made a huge breakthrough this year with entrance into another market about the size of China (1.3 billion people) – India. The U.S. poultry industry gained access to India in March and started shipping containers of poultry products there in April.

The US has about 120 poultry markets worldwide.

**INDUSTRIAL HEMP CHANGES COMING** (FarmWeekNow). "The farm bill would redefine marijuana in the Controlled Substance Act and remove hemp from that definition," said David Williams, Ph.D., agronomist with the University of Kentucky. "So, at least theoretically, it would legalize hemp, but it will remain under a state-regulated structure."

Williams attracted a roomful of interested Illinois farmers at the recent annual meeting of the Illinois Farm Bureau (IFB) in Chicago. Since passage of the last farm bill in 2014, Kentucky has initiated an industrial hemp research pilot program that has allowed some farmers in that state to grow the crop.

Illinois farmers had several questions for Williams about growing industrial hemp. Some of his responses included:

- Herbicide residuals in a corn and soybean rotation can be a problem
- As of now, there is no place in Illinois where you can receive a check for hemp fiber
- Bees and other pollinators love industrial hemp (and, no, industrial hemp pollen does not contain intoxicant cannabinoids)
- At present, pesticide application in industrial hemp is illegal, but use of pesticides is one item being evaluated in U of K production trials.

Earlier this year, the Illinois General Assembly passed and Governor Bruce Rauner signed legislation legalizing industrial hemp production in the state. The Illinois Department of Agriculture is currently in the process of developing new rules on growing and processing industrial hemp.

About "From the Farm Desk": There are a lot of farm-related news items that cross the Editor's desk to share with area farmers and farm supporters. This collection of news briefs is gathered from both mainstream and agriculture media and is designed to keep farmer members and leaders up-to-date. The articles are not intended to represent Cook County Farm Bureau policy or positions.

## 2018 Annual Meeting Highlights

The 98th Annual Meeting of the Cook County Farm Bureau was held December 12, 2018 at the Cook County Farm Bureau office.

Several items of business were transacted during the meeting as required by the by-laws.

- Actions included...
- A report and approval of the audited finances of the organization.
- Election of six board members to the

Cook County Farm Bureau for a two-year term, including:

- Dan Biernacki
- Roger Freeman
- Pat Horcher
- Gerald Kopping
- Todd Price
- Tim Stuenkel

- Approval of the Acts of Deeds of the Cook County Farm Bureau for the preceding year.



Janet McCabe, Pres., Cook County Farm Bureau ran the 98th Annual CCFB Meeting



Mark Yunker, Nominating Committee Chair, presented nominees from the committee

## MEET A 'FACE' OF THE COOK COUNTY FARM BUREAU®

Each month we are highlighting a Cook County Farm Bureau Ag Presenter. This month's "Face of CCFB" is ...

### Kathy Lesser



- Kathy has been a presenter since 2013. She previously taught Kindergarten for over 25 years in Chicago and always included agriculture in her lessons which involved hatching chicks, planting seeds and having an adopted farmer.
- Her children and grandchildren also have learned a lot about farming through Ag in the Classroom activities.
- She loves to bake, especially with her grandchildren.
- She feels so lucky to be doing a job that she loves!

#### WHAT IS YOUR FAVORITE FARM ANIMAL?

A jersey cow. Lincoln Park Zoo had a jersey heifer I would visit when I was young and ever since it has always been my favorite. My email address has jersey in it because of that.

#### WHAT IS YOUR FAVORITE MEMORY OF A TEACHER YOU HAD WHILE GROWING UP?

One of my favorite teachers was my eighth grade science teacher. Science was always my favorite subject and he made it come to life. He encouraged my love of ag and becoming a teacher.

#### IF YOU COULD BE ANY TYPE OF A FARMER, WHAT TYPE WOULD YOU BE ?

I always thought I'd say dairy farmer, but after having an Adopt a Classroom farmer who grew corn and soybeans, I think I'd like to be a corn and soybean farmer.

#### WHAT IS A FAVORITE STUDENT COMMENT?

Often they ask if the corn, soybeans and crops I bring are real. I tell them everything I show them is real and love seeing their reactions. I also love when they ask if I'm coming back again.

#### WHAT IS YOUR FAVORITE COOK COUNTY FARM BUREAU MEMBERSHIP BENEFIT?

My favorite benefit of being part of the Cook County Farm Bureau is actually just that, being a part of a great group of people.

#### WHY DO YOU ENJOY BEING A PART OF AG IN THE CLASSROOM?

Each year when I go back to a school they make me feel so welcomed and I feel like I'm making a difference in some children's lives.

#### WHAT WAS THE MOST SURPRISING THING YOU HAVE LEARNED ABOUT AGRICULTURE?

Just like the students, I'm still surprised by all the products we get from corn and soybeans, especially hydrosorb and soy lecithin.

#### WHAT IS YOUR FAVORITE SNACK FOOD?

My favorite snack food is yogurt. I enjoy all flavors and also the different types (smoothies).

## Johnson Awarded Eagle Award Posthumously

The late William "Bill" Johnson was awarded the 2018 Illinois Farm Bureau Eagle Award for Excellence during the Illinois Farm Bureau Annual Meeting held in Chicago December 1 - 4. Johnson, an instructor at Joliet Junior College for 50 years, brought great enthusiasm and optimism for agriculture for all of the students that he taught. He worked closely with many organizations including local County Farm Bureau's, 4-H, FFA, Illinois Pork Producers Association and more. During his tenure at JJC, Johnson established four scholarship endowments in supporters' names for

agricultural education and was a key source for local media when it came to livestock, trade and marketing interviews. Johnson received numerous awards and honors during his years of service and he is missed greatly by the agricultural community.

The IFB Eagle Award for Excellence recognizes individuals or organizations for excellence on issues or programs important to Farm Bureau and agriculture on a statewide and/or national basis. The Will County Farm Bureau and Cook County Farm Bureau presented a joint nomination for Bill Johnson to receive this award.

## WILLIAM B. JOHNSON MEMORIAL AGRICULTURE SCHOLARSHIP



The JJC Foundation has established the William B. Johnson Memorial Agriculture Scholarship.



Donations can be made online at [www.jjc.edu/gvetojjc](http://www.jjc.edu/gvetojjc) or by check made payable to:

JJC Foundation  
1215 Houbolt Road  
Joliet, IL 60431



# “From the Country”

## Use Caution This Winter When Using Space Heaters



Marc Rogala, Country Financial Agency Manager Chicago South

With home heating costs on the rise this winter, many people are turning to alternate heating sources to keep costs down. If you plan to use space heaters this winter, use extreme caution.

According to the National Fire Protection Association (NFPA), portable and fixed space heaters caused a disproportionate share of home heating fire deaths in 2007.

Space heaters were involved in 32 percent of home heating fires, but 79 percent of the deaths. In addition, heating equipment was responsible for \$608 million in property damage.

### How to Choose The Right Space Heater

- Select a space heater with a guard around the flame

area or heating element to protect children and clothing.

- Choose a heater that has been certified by a nationally recognized testing laboratory such as Underwriters Laboratories (UL).
- Buy a heater that is the correct size for the area you want to heat. The wrong size heater could produce more pollutants and may not be an efficient use of energy.
- Read and follow the manufacturer’s operating instructions, and make sure all members of the household understand how to operate the heater safely.
- Make sure the heater has an automatic “tip-switch,” a cutoff device that turns off electric or kerosene heaters if they tip over.

### How to Prevent Space Heater Fires

- Place the heater on a level, hard, noncombustible surface.
- Keep the heater at least 3 feet from bedding, drapes, furniture or other combustible items.
- Turn off the space heater when you leave the area, and never leave a space heater on while sleeping or if you leave home.
- Keep children and pets away from space heaters.
- Do not use older space heaters or heaters with cords that are cracked or frayed.

When used correctly, space heaters can make a cold room comfortable and can help curb heating costs during the winter months. By following a few precautionary measures when using space heaters, you can ensure your family’s safety and warmth.

Marc can be reached at [marc.rogala@countryfinancial.com](mailto:marc.rogala@countryfinancial.com)

## IFB Members Set Policy at Annual Meeting

Motor fuel tax, recreational marijuana and school security among the most intensely debated topics. (FarmWeek)

Looking ahead to a possible increase to the state motor fuel tax (last updated 28 years ago), delegates changed the policy from a \$.10 cap to allow the organization to support a ‘moderate’ increase in the motor fuel tax.

After lengthy debate, the Illinois Farm Bureau will maintain an opposed position to recreational cannabis. In the event that it is legalized, then the delegate body wants to make sure that it is regulated and taxed accordingly.

Delegates crafted policy to underscore the importance of school security but didn’t go so far as to support arming teachers. Delegates also passed a sense of the delegate body resolution supporting a solution to ongoing trade disputes.

“I certainly think one of the highlights of this year’s meeting was Secretary Sonny Perdue’s presence and his comments to our delegates about trade,” said IFB President Richard Guebert Jr.



L to R: Janet McCabe, Dan Biernacki, Tim Stuenkel and Ruth Zeldenrust served as Cook County Farm Bureau delegates to the Illinois Farm Bureau Annual Meeting held in Chicago last month.



Nearly 350 delegates took part in the process to update Illinois Farm Bureau’s policy book at the organization’s Annual Meeting in Chicago.



Cook County Farm Bureau President, Janet McCabe, accepts a recognition plaque from Brian Duncan of the Illinois Farm Bureau. The Cook County Farm Bureau played an active role during 2018 in program areas of Ag Literacy, Commodities /Marketing, Health/Safety, Legislative, Local Affairs, Communications, Member Relations, and Policy Development locally and in the state. The award was presented during the Illinois Farm Bureau Annual Meeting and calls attention to the comprehensive nature of county Farm Bureau programs.

AUTO | HOME | LIFE | BUSINESS | RETIREMENT

**COUNTRY FINANCIAL**

### Your South Holland Agency

 <b>Jeff Orman</b> Agency Manager 708-560-7777	 <b>Andrew Carrell</b> South Holland 708-596-3999	 <b>Jim Verduin</b> South Holland 708-596-0008	 <b>Randall Cox</b> Matteson 708-679-1870	 <b>Elliot Day</b> Matteson 708-679-1870
 <b>Gary Molenhouse</b> Matteson 708-679-1870	 <b>Pat Hickey</b> Worth 708-361-4081	 <b>Josh Van Namen</b> Worth 708-361-3925	 <b>Jim Pathemore</b> Orland Park 708-745-5151	 <b>Tim Perchinski</b> Steger 708-754-7300
 <b>Bob Smith</b> Homewood 708-798-4844	 <b>Paul Turay</b> Mokena 708-478-0423	 <b>John VanGennep</b> Mokena 708-478-5500	 <b>Bob Deenik</b> Lansing 708-474-5600	 <b>Tim Van Zuidam</b> St. John, IN 219-365-1781
 <b>Mike Cerf</b> Oak Forest 708-560-7777	 <b>Charmaine Toney-Adkins</b> Oak Forest 708-381-4010	 <b>Mel Flowers</b> Oak Forest 708-560-9078		

Auto, home and business insurance policies issued by COUNTRY Mutual Insurance Company®, COUNTRY Preferred Insurance Company® and COUNTRY Casualty Insurance Company®. Life insurance policies issued by COUNTRY Life Insurance Company® and COUNTRY Investors Life Assurance Company®. Fixed annuities issued by COUNTRY Investors Life Assurance Company®. All issuing companies located in Bloomington, IL.

## Helping you protect what matters most

0518-517HO





# Agricultural Literacy & Public Relations

## Ag Lit Bit: The Straw By Diane Merrion



Diane Merrion, CCFB Director of Ag Literacy

Last fall I had the pleasure of hosting some lifelong friends at our house for an extended weekend. The lead up to the visit included much cleaning, menu planning, tour

ideas, shopping for groceries and more cleaning. Every “to do” list item was checked and re-checked, especially as it related to the food items. I had decaf coffee, caffeinated coffee, heavy cream and even whipping cream (don’t ask my husband about the difference or my inability to specify what I needed more clearly). I was ready!

The first afternoon of the weekend one friend asked for some pop and I, of course, had just what she wanted. Then came the problem as she asked where I kept my straws. I don’t think I’ve ever had straws in my house except possibly when our boys were young. I offered to run out and buy some, but luckily my other guest solved the crisis by going out to her car and grabbing an extra she had from her drive to Chicago. I do believe that straw was washed and reused all weekend and finally tossed days later as everyone left. The straw is something that will

always make me think back to one of many laughs we shared.

There is currently a great deal of research going on to solve the plastic straw debate that is affecting sea life and landfills. When I saw two of the latest concepts, I was intrigued by yet another connection to agriculture.

One new option is called Hay! Straws which are made, as you can guess, from the stem of hay after it is harvested in the fields. The company sources their wheat stems from local farms in South east Asia, and then cleans, cuts and packages them for distribution. What a concept and another example we can share when we teach about the difference between straw and hay in our lessons.

The other straw replacement example is called Pasta Straws which look like the pasta I loved as a child with the large open straight tube like a Bucatini noodle. They really hold the spaghetti sauce and made a delicious meal. It will be interesting to see the other replacement options that unfold over the next few years and see where ag connects to the products. If I had been thinking that weekend, I should have just grabbed a box of pasta and had enough straws for years to come.

Diane can be reached at [aitec@cookcfb.org](mailto:aitec@cookcfb.org).

## Cook County Farm Bureau® Foundation Agriculture in the Classroom

### Teacher Mini-Grant Spring 2019 Program

The Cook County Farm Bureau Foundation® is offering grants up to \$400 each to Kindergarten through 12th grade teachers to fund projects that promote agricultural literacy in the classroom. Grants can be used for classroom projects/lessons such as soil studies, pest management, plant science, school garden or horticultural studies or even entrepreneurship projects to name a few. Projects should focus on expanding the minds of urban and suburban learners to understand the connection between agriculture and our urban area.

Applications due February 4, 2019 and can be found at <https://cookcfb.org/ag-literacy-and-education/teacher-resources/profile/grants>.



## Illinois Community Colleges Setting Records in Agriculture

By Kay Shipman

Illinois higher education hit important ag milestones in 2018. A record number of community colleges are offering agriculture programs, and a near record number of community college ag students plan to further their educations and earn four-year degrees.

“We’re at an all-time high,” said Lucas Allen, district field adviser with Facilitating Coordination in Agricultural Education (FCAE). Statewide, a record 27 community colleges offered ag in 2017-18, Allen said. For the last several years, Illinois has averaged one new community college ag program each year. Community colleges also recorded the second-highest number of ag students, 612, enrolled in transfer programs to pursue four-year degrees, according to Allen.

“This matches the trend of (Illinois) high schools adding agriculture programs,” Allen said. “It makes sense that higher education finds value and is capturing strong math and science” components of ag education.

A majority of community college ag students, 68 percent, did not grow up on farms. More ag students seeking degrees, 50 percent, took ag courses in high school. Online agriculture education continues to advance with more students, 622, enrolled in online ag courses and more online ag course offerings, 45 courses. While Allen lacked specific reasons for continued growth in community college ag programs, he speculated the colleges are responding to local employers’ workforce needs. He noted the ag programs are receiving support from local businesses, county Farm Bureaus and others.

When asked to comment about (Agriculture, Food, & Natural Resource) program offerings in Cook County, Allen noted that only one college offers AFNR courses- (Triton College in River Grove) but Cook County is surrounded by other community college districts who teach AFNR very well also. If a student is interested in studying AFNR, they are able to attend an out-of-district college for in-district price if their major (AFNR) is not offered. For more information, visit [www.agriculturaleducation.org](http://www.agriculturaleducation.org)

A longer version of this story was printed Dec. 3 in FarmWeek.



### OUR 4TH GRADE PROGRAMS TEACH STUDENTS ABOUT

- ILLINOIS FARM PRODUCTS AND THE FARM TO TABLE PROCESS
- TECHNOLOGY USE IN AGRICULTURE INCLUDING DRONES AND GPS SYSTEMS
- THE DIFFERENCE BETWEEN RENEWABLE AND NON-RENEWABLE RESOURCES
- THE IMPORTANCE OF READING FOOD LABELS AND MAKING HEALTHY EATING CHOICES USING THE USDA MYPLATE AS A GUIDE
- THE VAST OPPORTUNITIES IN AG CAREERS IN THE NEXT 20 YEARS

(LESSONS TIED TO SOCIAL SCIENCE, COMMON CORE AND NGSS STANDARDS)



**TO SIGN UP**  
CALL: 708-354-3276  
EMAIL: [AITC2@COOKCFB.ORG](mailto:AITC2@COOKCFB.ORG)  
WEBSITE: [COOKCFB.ORG](http://COOKCFB.ORG)

## Students Meet Their Farmer

Students at CICS Wrightwood School in Chicago were excited to meet their adopted farmer when the Jackson County Farm Bureau visited their classroom during the Illinois Farm Bureau’s Annual Meeting in December. Farm Bureau Manager, Jessica Grammer and AITC Committee Chair and Board Member, Barbara Arbeiter led students through a discussion about how the farms in Jackson County produce the food we eat including corn, soybeans, wheat, cattle, chickens and pigs. The lesson culminated with students making individual pizzas while they learned the origin of pepperoni, tomato sauce, mozzarella cheese and the wheat crust. Students were excited to meet the farmers and be given the opportunity to grind wheat and eat their homemade pizzas for their lunch that day. Our thanks to Ms. Mashanda Scott for inviting us into her classroom and for adopting the Jackson County Farm Bureau.

The Adopt-A-Classroom Program has partnered 38 classrooms in Cook County for the 2018-19 school year. From fall to spring, the Farm Writers interact with students through photos, letters, videos or even visits during the school year like Jackson County did last month. Participating teachers receive three packets per year which contain Ag Mags, an accurate ag book, and ag-related lesson plan and materials. If you are interested in adopting a farmer next year, email [aitec@cookcfb.org](mailto:aitec@cookcfb.org) or visit <http://www.aginthe classroom.org/TeacherResources/adoptaclassroom.shtml> next summer to register.

## Teachers JOIN the Farm Bureau

Start the year out with a membership in the Farm Bureau and be entered into a drawing to win an indoor/outdoor EARTH Box, complete with wheels for moving between classrooms. You will also receive several horticulture related books (example shown in photo) to go with your garden box. Call or email our Membership Department to participate. If filling out online application to join, indicate under Occupation “Teacher/EARTH Box Giveaway”. Promotion runs from 1/1/19-1/31/19. Winner will be notified on February 4th.

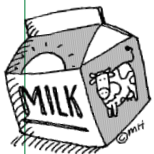




# Agriculture Adventures for Families

Welcome to another year of Ag Adventures! We hope you enjoy sharing the information we gather on this page and always look forward to your feedback and, of course, your completed word searches. We start out 2019 by sharing some information about National Milk Day which falls on January 11<sup>th</sup>. As you browse through the grocery aisles and dairy cases at the store there are many, many choices of milk. We are fortunate to select dairy milk or non-dairy

alternatives such as rice, coconut, soy or almond milk. Read your labels to determine what choice best suits your family and dietary needs.



## Milk Nutrients

Milk's essential nutrients help you grow strong & healthy.

- Calcium: Builds and maintains strong bones and teeth
- Vitamin D: Helps absorb calcium for healthy bones
- Riboflavin: Converts food into energy
- Phosphorus: Helps keep bones strong
- Protein: Builds and maintains lean muscle
- Potassium: Regulates fluid balance and blood pressure
- Vitamin A: Promotes good vision and healthy skin
- Vitamin B12: Helps red blood cells
- Niacin: Converts food into energy

Source: dairymakesense.com



Source: www.agintheclassroom.org/teacherresources/AgMags/Dairy

It is generally thought that **Milk Day** was created to celebrate the first time milk was delivered in glass bottles. Prior to this, conditions for milk delivery were fairly unsanitary but the new bottles enabled safe and clean storage.

Milk Day soon grew to be a day dedicated to all aspects of milk. Whether it is the health benefits of drinking it or the farming industry that produces it, the day is used to celebrate the wonders of milk.

Source: nationaldaycalendar.com/national-milk-day-january-11



## Milk Is a Local Food

Milk travels from the cow to the grocery store in about 48 hours.

- Healthy cows provide milk.
- Milk is cooled to below 45°.
- A tanker transports milk to a milk plant.
- Ongoing testing is done for quality and safety.
- Milk is pasteurized, homogenized & put into bottles.
- Milk is transported to the grocery store.

For more information, visit MidwestDairy.com.

\*\*\* Before modern milking machines, a farmer could milk about six cows by hand in one hour. Now, farmers can milk over 100 cows in an hour!! Illinois has about 102,000 dairy cows that produce close to 2 billion pounds of milk a year.



## Test Your Dairy IQ!

1.) Q. How many glasses of milk, on average, does a cow in the U.S. give per day?



- A. 20 B. 75 C. 100 D. 150

2.) Q. How much water does a milking cow drink each day?



- A. A gallon B. A bucket full C. A bathtub full

3.) Q. How do dairy farms contribute to the environment?



- A. Recycling water  
B. Caring for the soil  
C. Recycling manure  
D. All of the above

Source: www.discoverdairy.com

Answers: 1-D, 2-C, 3-D

### FUN FACT

Q. Why do cows moo?

A. Just like you and me, they "talk" to express how they're feeling. A smart farmer or veterinarian can often tell what the cow is needing by the sound of their moo. Cool!



## January Word Search

- |          |             |
|----------|-------------|
| Bottles  | Milk        |
| Calcium  | Moo         |
| Cows     | Nutrients   |
| Dairy    | Pasteurized |
| Delivery | Protein     |
| Farmer   | Safety      |
| Healthy  | Storage     |
| Machines | Strong      |

O B Q B C N Z M N S W T D G N  
 F J O D E G U D U Y W E Y K I  
 S T O R A G E T H I L O O L E  
 G L F X D Z H T R I C O C I T  
 T J Z P F G L A V I M L X M O  
 H S E Q C A W E G E E N A Y R  
 P A S T E U R I Z E D N Y C P  
 H F V H G Y O M S C P M T R S  
 S E L T T O B T E X T A T S X  
 F T N O K E R H K R N C C Z F  
 V Y H L X O Y R I A D H V E H  
 D A N A N D T C A D X I M J O  
 I F K G Z V Z V V E H N Y V T  
 G C F Z T S R E P X C E Y G C  
 Y I S J O M J F Z S M S P U M

Name: \_\_\_\_\_

Phone #: \_\_\_\_\_

Membership #: \_\_\_\_\_

(Membership # is located on front of paper)

If you were to win, check your preference:  
 \_\_\_ Beggar's Pizza GC \_\_\_ HRI GC \_\_\_ 3 Movie Tix  
 (If a choice is not made, movie tickets will be sent)

Deadline is the 20th of each month.

Choose your prize:

Choices include a \$25 Beggar's Pizza Gift Card, a \$25 Home Run Inn Gift Card, OR \*3 AMC Movie Tickets \*AMC Yellow tickets not valid in California, New York & New Jersey.

Complete the Word Search puzzle for your chance to win! Winners will be contacted by mail.

Mail to: Cook Co. Farm Bureau

Ag Adventures Word Search

6438 Joliet Rd

Countryside, IL 60525

Fax to: 708-579-6056

Email to: FBcooperator@gmail.com

Complete and submit an entry every month all in 2019 and your name is automatically entered into an "End of Year" drawing for a gift basket full of ag themed goodies. Good luck!

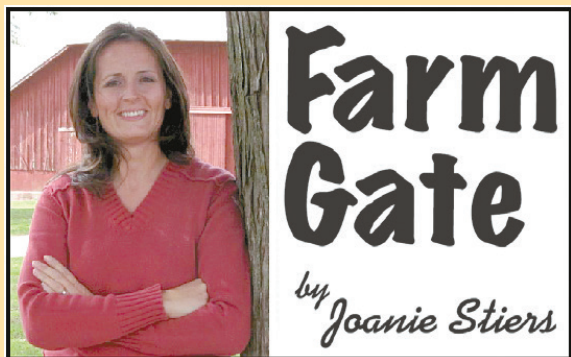
Last month's word search winner is ...



**Michael O'Brien**







## Best Bargains Made Early on Farm Supply Buys

My husband will attest that my obsession with holiday-time bargains unleashed when the kids slept. Morning and night, I glanced through bookmarked web-pages for product price drops in November and December. I kept a spreadsheet of my shopping plan and small victories in cloud storage, which made it editable on my smartphone. And I consistently monitored email and phone notifications for deals. My goal: Buy Christmas gifts as cost effectively as possible to delight our kids, relatives, teachers, and my husband, too.

I funnel my focus into saving money, an objective as important as making it. I find parallels in the farm office during our farm's season of shopping for next year's seed, pesticides, fertilizer, fuel, equipment and insurance. During the holiday madness, I watched for coupon codes, rebates and cash-back rewards at retailers that sold my kids' wish list items. On the farm, we're making spreadsheets to analyze the value of rebates, patronage, quantity discounts, early-pay incentives and financing options on the final cost of farm supplies.

The financial side of the farming operation demands as much attention on our farm as the hungry steers at the feed bunk and planter prep in the shop. In generations past, the harder you physically worked, the more money you made. Today, farming requires more significant financial investment and desk-type management than ever. Depressed crop values and tight margins makes us even more driven to monitor product costs, call around for price checks and watch for package deals to redeem before they're gone.

Serious holiday shoppers know to act fast to avoid the disappointment of your child's most-wanted toy running out-of-stock. Likewise, orders for corn and soybean seed start during harvest – months before we need to plant it and a year before we'll gather the result. From a semitruck or combine cab, my brother books seed to secure a supply of the most-sought seed varieties for our farm to use the following season.

Then again, booking early means paying early, too. While “pre-pay” never made Grandpa's farming vocabulary during his career, farmers for years now have paid for seed, fuel and pesticides far in advance. We pre-payers fund products early to guarantee supply and prices up to a year before gathering the crop. Though not always ideal, this early-pay process most often results in the best pricing deals we can get on the farm – our business version of seasonal shopping for bargains.

*About the author: Joanie Stiers, a wife and mother of two farm kids, writes from west-central Illinois, where her family grows corn, soybeans and hay and raises beef cattle.*

## Community Urban Garden Grant Program



Our Community Urban Garden Grant Program is looking to award 6 gardens in 2019! Applications are now available. All community-based urban gardens in Cook County are encouraged to apply. Grant details and applications are available at:

- Online; <https://cookcfb.org/stay-updated/upcoming-events>
- Email Debbie: at [membershipdebbie@cookcfb.org](mailto:membershipdebbie@cookcfb.org)
- Call the CCFB at 708-354-3276

## Family Food Bytes

**TOO MUCH OF A GOOD THING** (Wall Street Journal) – About 1.4 billion pounds of cheese is socked away at cold-storage warehouses across the country, the biggest stockpile since federal record-keeping began a century ago. The glut, which is putting the squeeze on dairy producers across the country, is due in part to cheese makers who ramped up production before trade tensions abroad killed demand for the product. Shifting domestic tastes have further changed the outlook in the dairy market.

**DELAY, DELAY, DELAY** – Gallup's annual Health and Healthcare poll once again found roughly 30 percent of Americans held off seeking some kind of medical treatment in the past year due to costs. The most recent data is consistent with the rate seen each year since 2005 but is up from an average of 24

The costs of healthcare and health insurance have been big concerns for decades. percent in the four years prior to that and from 22 percent in 1991. While it's pretty common for medium to large employers to offer health insurance coverage to their employees, if you're self-employed, work part-time or work for a small business, you may be on your own. To assist clients and members, Country Financial Life & Health has an Affordable Care Act Tool designed to help people See how the Affordable Care Act affects you and understand your options.

<https://www.countryfinancial.com/en/tools-resources/calculators-tools.html>



**FREE RADON KITS FOR RESIDENTIAL HOMES AVAILABLE FROM COOK COUNTY** - Email [environmentalcontrol@cookcountyil.gov](mailto:environmentalcontrol@cookcountyil.gov) with your name and mailing address to request a kit.

**BEEF BATTLE** (NPR) – Despite \$200 billion a year in sales, the U.S. beef industry is preparing to battle for market share against unlikely foes: plant-based meat substitutes and actual meat grown in labs. The industry that makes plant-based burgers is growing 20 percent a year. Likewise, lab grown meat could upend traditionally produced meat, making rare and import-dependent animal proteins easier to come by.

*About Family Food Bytes: This is a collection of articles gathered from both mainstream and agriculture media and is designed to keep you informed as a member and leader within the Cook County Farm Bureau organization. The articles summarized above are not intended to represent Cook County Farm Bureau policy or positions, but rather to provide members an idea of what is being reported regionally, nationally and globally.*

## Statement from the Illinois Farm Bureau Regarding the Clean Water Rule Proposal

The following is a statement from the Illinois Farm Bureau President Richard Guebert, Jr. regarding the Clean Water Rule proposal released by Acting EPA Administrator Andrew Wheeler.

“Illinois farmers and landowners want clean water and clear rules. This new common-sense water rule protects water quality and gives them clear rules they can follow.

“As a farmer I should be able to look

at my land and know what is and is not a Water of the U.S. under the Clean Water Act. The previous regulatory patchwork created uncertainty, this proposal establishes national consistency.

“Farm Bureau supports common-sense regulations that protect and improve water quality on our nation's farms and ranches. We applaud the administration for addressing farmers' concerns regarding regulatory overreach.”

INCREASE FUEL EFFICIENCY

RESTORE HORSEPOWER

EXTEND ENGINE LIFE

708-532-4723

Diesel<sup>®</sup> Gold

Power ♦ Efficiency ♦ Protection

- Restores lost horsepower and fuel economy
- Starts engines faster and produces lower emissions
- Extends fuel pump and injector life

[www.conservfs.com](http://www.conservfs.com)

GO FURTHER

GO FS

©2018 GROWMARK, Inc. M1022395



## Cook County Farm Bureau® Policy Submittals Approved by Delegates

Through a grassroots process, Farm Bureau members submitted the following resolutions to delegates at the 2018 Illinois Agricultural Association® annual meeting.

### Organic Agriculture

The resolutions support:

- Farmers selling organic products being required to display the USDA Certified Organic logo and their certification number and
- The term organic being defined as a production standard set by the USDA National Organic Program for marketing label use (Title 7, Subtitle B, Chapter I, Subchapter M, Part 205).

There have been instances in the county of growers selling produce as “privately certified” at farmers markets. By displaying the USDA Certified Organic logo and their certification number, the integrity of the organic certification program is better ensured.

Farmers wishing to market their products as “organic” undergo a rigorous certification process including: adopting specific management practices, an extensive application process, document inspection; and site inspection by a USDA-accredited certifying agent. Only this agent can issue the organic certification. In addition to being time consuming,

the organic certification process is expensive. Annual certification costs vary widely depending on the certifying agent, size, type, and complexity of the farm. Certification costs may range from a few hundred to several thousand dollars. Typically, there is an application fee, annual renewal fee, assessment on annual production or sales, and inspection fees.

### Government Assisted Nutrition Programs

The resolution replaces existing Farm Bureau Public Aid policy and creates the Government Assisted Nutrition Program policy. The policy provides that we support:

- Programs to provide a basic nutrition benefit to need-based individuals.
- Benefit allotments based on a fair value amount that accounts for the true cost of food, geographical food price variation and time costs for food preparation.
- Incentives for purchasing fruits and vegetables.
- Educational programs and incentives for participants to utilize benefits to purchase food meeting nutrition dietary guidelines.
- All program participants utilizing benefits for home-delivered groceries not including service fees and delivery charges.

- The acceptance of benefits at CSAs, farmers markets, online grocery stores, and farm stands.
- Charitable food provider access and funding to purchase domestically produced United States Department of Agriculture (USDA) commodities for distribution to need-based individuals.
- Illinois Health and Human Services staff contacting nutrition program recipients who request a replacement Electronic Benefits (EBT) card more than twice in a 12-month period.
- Increasing food bank funding for food and nutrition assistance programs, cold storage, and distribution costs.
- Work or educational training requirements for able-bodied recipients.

SNAP benefits are distributed to participants in the program; but the real benefits are the contributions SNAP makes to society as a whole. SNAP has been called “the cornerstone of the nation’s nutrition safety net” and is one of the most important programs in place to prevent hunger and food insecurity in the United States. The program has also been shown to be an economic boon for the nation, increasing consumer spending in supermarkets and grocery stores across the nation.

## Farm Bureau Comments on Hiring Practices at the Board of Review

*Cook County Farm Bureau® sent the following letter to Cook County Commissioners regarding Fair Hiring Practices at the Board of Review:*

The Cook County Board of Review is tasked with fairly and impartially reviewing the assessments of all property within Cook County to the extent authorized by the Property Tax Code. The Board corrects all assessments which should be corrected, raises, lowers, and/or directs the Cook County Assessor to change, correct, alter, or modify assessments as may be required. It also uses the authority provided by the Property Tax Code to ensure a full, fair, and impartial assessment of Cook County property.

To complete its mission, the Board of Review recently implemented the Digital Appeal Processing System (DAPS), which provides the public with a state-of-the-art interactive electronic appeal system. The DAPS has created efficiencies so that the Board can adjudicate a higher volume of appeals in a more efficient and transparent manner. The system has also made filing more interactive and convenient for the public to use. In fact, the Board of Review expects appeals to reach 250,000 this year up from 180,000 just a few years ago.

During the budget process, the County Board recognized the efficiency of the DAPS and allocated additional staff position to handle the increased appeals volume. Given that Board of Review Commissioners are elected from equal size districts and that all three commissioners review the appeals submitted, the additional staff members authorized by the county board should be allocated equally among Board of Review Commissioners.

Cook County Farm Bureau® supports the Fair Hiring Plan resolution introduced during the December Board of Review meeting. The resolution would ensure that Board of Review Commissioners can fairly and equitably represent the taxpayers of Cook County.

As the county’s largest general farm organization, Cook County Farm Bureau® is dedicated to bridging the gap between farmers and urban consumers. Through education programs targeting youth and their parents and programs designed to connect farmers with potential consumers, Farm Bureau members are actively engaging in conversations about food and the shared values between farmers and consumers.



*Cook and Pike-Scott County Farm Bureaus presented Senate President John Cullerton (pictured center) with a 2018 Friend of Agriculture award. Senator Cullerton is “adopted” by the Pike-Scott County Farm Bureau*



*State Senator Michael Hastings (pictured right) received the 2018 Friend of Agriculture award from the Cook and Will County Farm Bureaus. Senator Hastings is also an active participant in the Adopt-a-Legislator® program. Senator Hastings is pictured with Farm Bureau staff Bona Heinsohn.*

### Coming to Your Mailboxes Soon: Viewpoint Surveys

Reminder: voting members will soon be receiving the 2019 Viewpoint Survey.

This is an important tool in CCFB’s grassroots arsenal. Not only does this survey enable us to get a “pulse” on voting members’ positions on local, state and federal issues but it provides the basis for

future policy discussions, meetings and submittals.

Survey topics include: roadway improvements, local government consolidation and county taxation.

Voting members are encouraged to return their surveys as soon as possible.



*By Bona Heinsohn, CCFB Director of Gov. Affairs and P.R.*

My farmer and I went to college in Illinois. We considered a Wisconsin school, but at the time out-of-state tuition was out of the question. A decade later (yes, that hurt) my favorite cousin became a “Miner” at the University of Wisconsin at Platteville. The longer she spent in Wisconsin the more we paid attention to Wisconsin schools until we were rooting for “Big” Frank Kaminsky and the Badgers during March Madness.

Our big little boy especially is infatuated with “Bucky.” He happily tells everyone who will listen that he’s going to be “Bucky” when he’s older. He squeals with delight at the sight of

“Bucky.” Ask him to teach you how to Bucky and he’ll bust into dance. This winter, my favorite cousin gave my big little boy a “Bucky” pillow pet and you would’ve thought “Bucky” was made of gold rather than fluffy stuffing. My big little boy prefers to pet “Bucky’s” tail and to give him kisses before bed.

Speaking of kisses, my blue-eyed girl snuggles and kisses her fluffy buckskin mare after each ride. I, on the other hand, catch my breath and put my heart back in my chest when she dismounts. Over the summer I watched in terror as she and two other girls flew around the hay field and onto the trails. Not only was it the fastest she had gone, but it was the first time she rode without an adult with her. It was in that moment that I learned that even though her

fearlessness terrifies me, it also makes me proud.

This summer both my blue-eyed girl and my big little boy found their way to the softball field. My big little boy raced around the t-ball field with little regard as to which direction you’re technically suppose to travel. In his defense, he’s four and it was his first (and likely his last) season. I, on the other hand, as a coach, was stationed at third base happily sending all the four-year olds to home plate. My farmer filled in for me for half a game and has since refused to ever do so again.

My blue-eyed girl played her fifth season of softball. I think she found her position at third base, but we keep moving her, so she can try different sides of the field. As someone who never

played third base, I was a catcher my entire softball career, it’s incredible to see how much she’s grown and how much her abilities have changed. She played two seasons and I managed to live through coaching two seasons. She tells me that she wants to try basketball in the spring instead of softball. I’m looking forward to juggling basketball, spring planting, and my role on the softball board, a role I’ve been lusting for since playing my last game in the league.

For my farmer and I we want nothing more than our blue-eyed girl and big little boy to grow-up and try new things. And (safely) test their wings. We want them to want nothing more than to milk a cow. Drive a tractor. Farm.

*Bona can be reached at [bona@cookcfb.org](mailto:bona@cookcfb.org).*

## Manifolds, Manolos, and Manure



*Special Offer for  
Cook County Farm Bureau  
Members*



**MICKEY'S  
SEARCH & PARTY**

**COOK COUNTY FARM BUREAU MEMBERS  
CAN SAVE UP TO \$10 ON THE  
PURCHASE OF TICKETS TO SEE**

**DISNEY ON ICE: MICKEY'S SEARCH PARTY  
AT THE UNITED CENTER  
FROM JANUARY 30TH TO FEBRUARY 3RD, 2019.**

**TO ORDER TICKETS CALL  
312-455-7469.**

Cook County Farm Bureau Members tickets priced at \$18 per race!  
(\$30 Value)

**K1 SPEED**

*\*Call CCFB office to purchase tickets!!*

**LIVE FAST.  
RACE FAST.**

**100% ELECTRIC**

Guests must be over the height of 48" to race. No one under the height of 48" will be permitted to race.  
Offer not valid with any other discounts, offer, or group events.  
Valid at all K1 Speed Locations Nationwide

**New Member Benefit Platform**



Sign up to  
access over  
**302,000**  
discounts  
<https://ilfb.abenity.com>



Access local and national discounts at work, at home, or on the go! Save on thousands of hotels, restaurants, movie tickets, retailers, florist, theme parks, national attractions, concerts, and events.

**Sign up today!** <https://ilfb.abenity.com>

**Cook Country Financial  
Representatives of the Month**

The Financial Representative of the Month program is designed by Country Financial Agency Managers of Cook County to recognize overall Insurance Leaders in Life, Disability, Auto, Home, and Health production during the month. The agent earns the award through efforts to provide quality service to existing and new clients. Listed below are the various agents honored by their agency manager with the Financial Representative of the Month designation.



**Ilir Numani**  
*Chicago North Agency, Victoria Nygren, Agency Manager*  
Ilir Numani has been named Career Financial Representative of the month for November 2018. His office is located at 6650 N. Northwest Hwy, Ste. 200. in Chicago, IL. His phone number is 773-631-2909. Ilir has been a Financial Representative since April 2005.



**Sylwia Grochowska**  
*Chicago North Agency, Victoria Nygren, Agency Manager*  
Sylwia Grochowska has been named Employee Financial Representative of the month for November 2018. Her office is located at 3933 N. Harlem Ave. in Chicago, IL. Her phone number is 773-628-2502. Sylwia has been a Financial Representative since February 2016.



**Nader Mikhaeil**  
*Chicago Northeast Agency, Sharon Stemke, Agency Manager*  
Nader Mikhaeil has been named Career Financial Representative of the month for November 2018. His office is located at 4200 W. Euclid Ave., Ste E in Rolling Meadows, IL. His phone number is 847-963-8874. Nader has been a Career Financial Representative since March 2006.



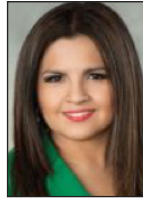
**Joseph Munch**  
*Chicago Northeast Agency, Sharon Stemke, Agency Manager*  
Joseph Munch has been named Employee Financial Representative of the month for November 2018. His office is located at 4200 W. Euclid Ave., Ste. E in Rolling Meadows, IL. His phone number is 847-963-8835. Joseph has been a Financial Representative since February 2015.



**Kathy Spiewak**  
*Chicago Northwest Agency, Jack Smith, Agency Manager*  
Kathy Spiewak has been named Career Financial Representative of the month for November 2018. Her office is located at 11 W. Wise Rd., Schaumburg, IL. Her phone number is 847-716-1010. Kathy has been a Financial Representative since February 2007.



**Faustino Ramirez**  
*Chicago Northwest Agency, Jack Smith, Agency Manager*  
Faustino Ramirez has been named Employee Financial Representative of the month for November 2018. His office is located at 1515 E. Woodfield Rd., Suite 930 in Schaumburg, IL. His phone number is 847-891-3937. Faustino has been a Financial Representative since October 2017.



**Martha Dominguez**  
*Chicago South Agency, Marc Rogala, Agency Manager*  
Martha Dominguez has been named Chicago South Career Financial Representative of the month for November 2018. Her office is located at 3458 S. Halsted St. in Chicago, IL. Her phone number is 773-254-5810. Martha has been a Career Financial Representative since June 2012.



**Dan Jemison**  
*Chicago South Agency, Marc Rogala, Agency Manager*  
Dan Jemison has been named Chicago South Employee Financial Representative of the month for November 2018. His office is located at 6438 S. Joliet Rd., in Countryside, IL. His phone number is 708-937-0024. Dan has been a Financial Representative since September 2016.



**Mike Spadoni**  
*Orland Park Agency, Cary Tate, Agency Manager*  
Mike Spadoni has been named Career Financial Rep of the Month for November 2018. His office is located at 3923 W. 95th St., in Evergreen Park, IL. His phone number is 708-425-1825. Mike has been a Financial Representative since June 2005.



**Scott Vergara**  
*Orland Park Agency, Cary Tate, Agency Manager*  
Scott Vergara has been named Employee Financial Rep of the Month for November 2018. His office is located at 9731 W. 165th Ste. 36 in Orland Park, IL. His phone is 708-226-0350. Scott has been a Financial Representative since May 2018.



**Bob Smith**  
*South Holland Agency, Jeff Orman, Agency Manager*  
Bob Smith has been named Career Financial Rep of the Month for November 2018. His office is located 18159 Dixie Hwy. in Homewood, IL. His phone number is 708-798-4844. Bob has been a Financial Representative since March 1980.



**Mel Flowers**  
*South Holland Agency, Jeff Orman, Agency Manager*  
Mel Flowers has been named Employee Financial Rep of the Month for November 2018. Her office is located at 4845 167th St. in Oak Forest, IL. Her phone number is 708-560-9078. Mel has been a Financial Representative since September 2018.



### Classifieds

All ads that we receive for the Co-Operator are also listed on our website at [cookcfb.org/membership/classifieds](http://cookcfb.org/membership/classifieds). If you have a photo of the item(s) that you are selling (Auto, Home, Furniture, etc.) you can email it to us to include it on our 'Classifieds' page on our website only along with your ad. Email your ad (and photo if you have one) to [FBcooperator@gmail.com](mailto:FBcooperator@gmail.com). Please be sure to include your full name, Farm Bureau number, and phone number. Deadline date for Classified ads is the 17th of each month. Any ads submitted after the 17th will appear in the following month's Co-Operator. Members may run up to four non-commercial classified ads annually for free. Any ads submitted after the fourth free, will be charged. If mailing your ad, please mail to: Cook County Farm Bureau, Attention: Classified Ads, 6438 Joliet Rd, Countryside, IL 60525. You can also fax your ad to 708-579-6056.

### For Sale

Cemetery lot for sale Mount Vernon Cemetery Garden of Apostles lot 1. For pricing call Albert at 630-863-3801

Commercial brick building full basement with front/back entrance. Free standing ideal location near major highways and Arlington park train station. Call Rita at 847-259-9339 or 815-600-4828.

Brick home 4 bedroom, 2 1/2 bathroom, gorgeous kitchen intriguing atrium double garage and fenced yard in Dekalb, IL. Call Rita at 847-259-9339 or 815-600-4828.

Handicap Ramp- wheelchair ramp with steel risers, 4ft wide, 12ft long (In 3-foot sections to shorten length as needed) adjustable height for the steps and landing of your home's entrance. Asking \$950.00 or best offer. Call Dan at 630-204-8022 for info.

2014 Stannah 420 saxon chairlift 12'6" track, rises 10 stairs 420 saxon stairlift is designed specially for straight staircase fitting. Weight capacity 350lbs. \$700.00 call Bernard at 847-224-2105 for more info.

Potential Items- New vehicle waxmaster by Wilton \$40. New 6pc Humidore \$40. Clam shell car carrier \$50. 3pc tan luggage set \$100. 2-self drive lawn mowers \$50 each. Ma & Pa Americana Christmas bears \$20 each. Call Paul at 708-

826-0000.

Lawn décor- Toy soldier lite up 2 1/2 feet tall to 3 1/2 feet tall, 5 with black hats, 2 with white hats, 1 major with white hat and mustache, taller excellent condition. \$200 or better offer. Call Paul at 708-826-0000.

### Vehicle

2009 Fat Bob, miles 13355, vivid black 96ci Cam Engine, new tires installed fall of 2017, new mirrors, grips, chrome clutch and brake handles, washable air filter, and fluids get seat made for two this motorcycle is one great ride and sound great. Always getting compliments on how it looks and sounds! It's all cleaned and ready to ride. Asking price \$7,999.00 or best offer. Call Michael at 708-710-7867.

### For Rent

Time Share - January 2019 3rd & 4th week in beautiful Marco Island Florida on a beach facing Gulf of Mexico second floor sleeps 6 (no pets allowed). Call Rita at 847-259-9339 or 815-600-4828

Florida Keys free-standing condo for rent. Furnished 3bedroom, 2.5 bath, full kitchen, washer, dryer, decks, & pool. (1 king bed, 1 queen bed, and 2 twin beds.) Located in the Middle Keys, with easy access to Ocean or Gulf. Boat slip behind house is included with condo rental. Coral Lagoon, Unit 18, Marathon, FL. Call Homer at 305-289-2212.

### Wanted

Wanting to buy your electric trains and slot cars, turn those unwanted Trains and Slot Cars into cash! Call Ron at 630-272-4433.

\$\$\$ INSTANT CASH \$\$\$ FOR YOUR CAR OR TRUCK RUNNING OR NOT TOP DOLLAR PAID \$\$\$ CALL GREG AT 224-465-4733

Collector buying antique firearms and military items. Including bayonets, ammunition, helmets uniforms and gun parts. Call Frank at 847-253-4685 or email at [matu@wowway.com](mailto:matu@wowway.com)

Need Cash? Wanted Old Gold, Silver, and Diamonds. Honest cash prices. Call Bob at 708-602-3350.

## This Month in Cook County Agriculture

Please join the Chicago Farmers for their January Luncheon at the Illini Center, Chicago, where they will discuss AgTech with the CEO of Tillable, Corbett Kull. The luncheon meeting is January 14, 2019 from 11:30 AM -1:30 PM and registration and meeting information is available online at: <http://chicagofarmers.org/meetinginfo.php>.

Illinois Farm Bureau Foundation Scholarship Applications are due February 1, 2019. Go to [www.IAAFoundation.org](http://www.IAAFoundation.org) for applications and details.

Will-South Cook SWCD Conservation Education Scholarships are available at [www.will-cookswcd.org](http://www.will-cookswcd.org).

The Illinois Specialty Crops, Agritourism

and Organic Conference will be held January 9-11, 2019 at the Crowne Plaza in Springfield. Go to [www.specialtygrowers.org](http://www.specialtygrowers.org) for details.

To promote your activity, email [membershipdebbie@cookcfb.org](mailto:membershipdebbie@cookcfb.org) or call 708-354-3276 by the 15th of the month. Please include your name, the event date/time, a one-sentence description of the event, and how a reader can obtain further information in the email. We will edit submissions based on space allowances in the publication.

In addition, we will post farm, garden or livestock related photos on our social media platform if you forward those to [membershipdebbie@cookcfb.org](mailto:membershipdebbie@cookcfb.org).

Whether you are a grower, supplier, association, or consumer... TOGETHER we are the voice of specialty crop growers in Illinois.

## Illinois Specialty Crops, Agritourism, & Organic Conference

January 9-11 / 2019

**IMPORTANT DEADLINES:**  
 Dec. 18, 2018 -Hotel Reservations  
 Dec. 21, 2018 -FSMA Workshop Registration Ends  
 Dec. 31, 2018 -Conference Pre-Registration Ends

*(After Jan. 1, you will need to register on site at the conference).*

Crowne Plaza Hotel & Convention Center  
 Springfield, IL

We encourage you to register for the conference using our web-based system. Visit: [www.specialtygrowers.org/iscaoc](http://www.specialtygrowers.org/iscaoc)

[www.specialtygrowers.org](http://www.specialtygrowers.org)

## Cook County Farm Bureau Member Health Benefits

Free hearing screening! Free annual electronic hearing evaluation and a 20% discount off the dispensers' regular list price on hearing aid purchases is provided. Visit [www.beltone.com](http://www.beltone.com) to find the nearest Beltone location near you or call Beltone Hearing Center at 877-710-6228. Members present their Cook County Farm Bureau Membership Card to receive the discount use code #MC42180.

You can save at over 57,000 participating pharmacies including just about every major pharmacy chain from CVS to Wal-Mart. Visit [www.cookcfb.org](http://www.cookcfb.org) for more information and to print a card online OR contact our office at 708-354-3276 and request a prescription card. Once you receive it, you can take it to a pharmacy near you to receive your discount!

Lasik eye surgery with a savings of up to 45% off the national average cost for traditional Lasik. Call 1-866-977-3012 for a quote.

A medical alarm protects your loved ones with a push of a button! Members receive one month free of monitoring and no initial fees. Call toll free 1-855-872-8404 or visit on line [www.peaceofmindalert.com](http://www.peaceofmindalert.com).



**We offer wet hosing, bulk tank fills and package lubricants - D.E.F, Oil, Hydraulic, Diesel and Gas for all your needs.**



**We are a 24/7 Fuel Supplier servicing Illinois - Wisconsin - Indiana**  
**Call us today at 847-994-3010 or visit us online at [www.luckysenergy.com](http://www.luckysenergy.com)**  
**Growing To Serve You Better**

## Beekeeping Classes Offered at the Farm Bureau

The Cook County Farm Bureau® and the Cook Du-Page Beekeepers Association (CDBA) have joined together to help get you started down the right path in the keeping and caring for bees, by offering beekeeping workshops at the Farm Bureau! Pete Soltesz and Kim Kulton of the CDBA will be conducting the classes.

- **Beginning Beekeeping - 12-Hour Course**  
 Dates: Saturday, March 9, 2019 & Sunday, March 10, 2019  
 Time: 9 AM - 3 PM (working lunch)  
 Cost: \$75.00 for CCFB & CDBA Members | \$100 for non-members
- **Advanced Beekeeping - 12-Hour Course**  
 Dates: Saturday, April 6, 2019 & Sunday, April 7, 2019  
 Time: 9 AM - 3 PM (working lunch)  
 Cost: \$75 for CCFB & CDBA Members | \$100 for non-members

**Class Location:** Cook County Farm Bureau Meeting Room  
 6438 Joliet Road, Countryside, IL 60525

### Registration & Payment:

- Call Debbie (CCFB) at 708-354-3276
- Credit card payment accepted by phone at no additional charge or mail a check made out to the Cook County Farm Bureau
- CCFB Member Online Registration at the Member Center at [www.cookcfb.org](http://www.cookcfb.org)

**For Course Details go to [www.cookcfb.org/stay-updated/upcoming-events](http://www.cookcfb.org/stay-updated/upcoming-events) or call 708-354-3276.**





## Mayflower Cruises & Tours

2019-2020

Motorcoach, Rail & Cruise Holidays

US & Canada

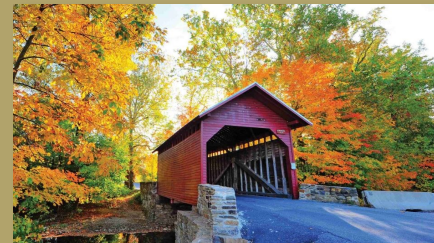
Guided Holidays

To begin your Life Enriching Experience, learn more about Mayflower Tours and the **Exclusive Discount** Cook County Farm Bureau® members receive contact:

**Mayflower Tours**

Discount Code: ccfb16

- Ask for Kayla: 800-728-0724 ext. 201
- Direct: 630-435-8201 (9:30 am—6:00 pm)
- Email: [kayla@mayflowertours.com](mailto:kayla@mayflowertours.com)
- Visit: [www.mayflowertours.com](http://www.mayflowertours.com)



## 2019 Foundation Scholarship Applications Now Being Accepted

The Cook County Farm Bureau® Foundation is proud to announce the 21st Annual “Farm and Food” Agricultural Scholarship Program. The Cook County Farm Bureau Foundation is offering college students the opportunity to start or continue his/her higher education with a scholarship. Last year, the Foundation provided eight scholarships ranging from \$1,000-\$3,000 each.

The Board will name the top applicant as the Howard Paarlberg Excellence in Agriculture Scholarship recipient. The Foundation will award a scholarship (s) to college students pursuing agricultural related fields of study. The Conserv FS FFA Scholarship for \$1,000 will also be offered to a High School Senior in an approved FFA Program.

The Foundation Board has set the following criteria for the scholarship program:

- Applications must be completed and submitted to the CCFB Foundation by February 15, 2019. Late applications will not be considered.

- All applicants must be members or dependents of members in good standing with the Cook County Farm Bureau for at least one year. (With the exception of the Conserv FS FFA Award for area high school FFA students)
- All applicants must be high school graduates accepted for enrollment by, or currently enrolled at, an accredited college, university, or community college.
- All applicants must be pursuing a field of study in agriculture, agri-business, or an agricultural related major with a focus on an ag-related career (food, fuel or fiber).
- Scholarships will be awarded following application evaluation for exceptional academic ability, financial need, demonstrated interest in agriculture, evidence of self-help, and character.

For more information or an application, please contact the Cook County Farm Bureau Foundation at 708-354-3276 or print an application out from our website at [cookcfb.org/foundation/scholarships](http://cookcfb.org/foundation/scholarships).

**What is an Agricultural Career? Here are a few examples and there are so many more!**



Forestry Management



Large Animal Veterinarian



Nutritionist

## BOOK CLUB

ADULTS AND EDUCATORS

Join Cook County Farm Bureau® as we explore themes of social class, sacrifice, food insecurity, and compassion. Through readings, group discussion, presentations, and a group work night at a local pantry, Book Club participants will also learn about Cook County agriculture.

Program will include:

*The Last Great Adventure of the PB&J Society* by Janet Sumner Johnson

*What the World Eats* by Peter Menzel and Faith D'Aluisio

Discussion on food insecurity services and issues

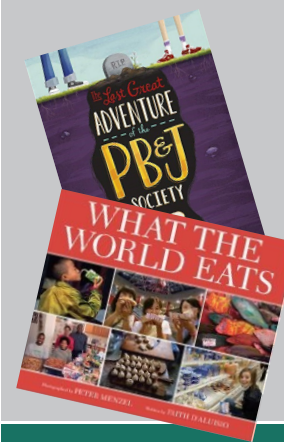
Presentation by a local farmer

Volunteer evening at a local food pantry

Skype discussion with PB&J author, Janet Sumner Johnson

\$10 donation per participant to a local food pantry (included in cost)

Teachers will be provided lesson ideas and guided reading tips



### Dates

Tuesday

• Jan. 15

• Jan. 22

• Jan. 29

Wednesday

• Feb. 6

**7 - 8:30 PM | Cost \$10**

**Location: River Forest Public Library**

**To register: call the CCFB office**

**at (708) 354-3276 or email**

**[altc@cookcfb.org](mailto:altc@cookcfb.org)**



For more info and book synopsis, visit [www.cookcfb.org](http://www.cookcfb.org)

## Are You a Business Owner and A Member Of The Cook County Farm Bureau®?



A Member-to-Member discount program was created to provide members who own businesses the opportunity to promote goods and services offered through their business to the other members of CCFB.

Please visit [www.cookcfb.org/membermember.html](http://www.cookcfb.org/membermember.html) for details, to sign up for the program, and to view a list of current participating member-to-member businesses.