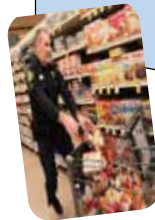
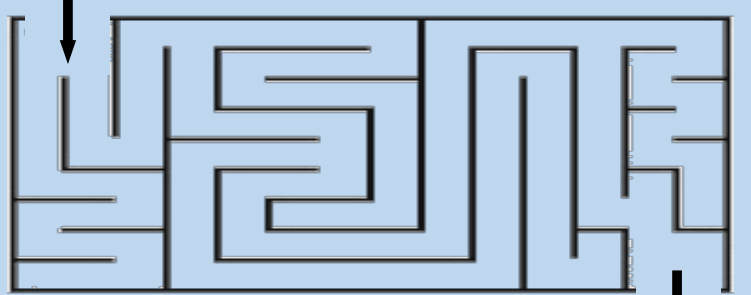


Agriculture Adventures for Families

THANK YOU

We all have causes near and dear to our hearts and welcome the chance to share with you, our loyal Ag Adventure readers, the route from Farm Bureau to Food Checkout Day. You've been with us every step along the way through your donations of pop tabs, money, food and volunteerism. The pantries have been filled through the generosity of others, and for that we thank you!

The Care Mobile provides backpacks to children, complete with school supplies, ready to prepare food items and even some goodies such as gloves and hats. Farm bureau loaded school donations to get them to the people who fill the packs. Help guide the Care Mobile to the children!



Trivia

- How many pounds of pop tabs have been collected since our first Food Checkout Day?
A. 21,000 B. 26,000 C. 31,000
- How many pounds of food did our participating schools collect this year?
A. 2,485 B. 3,317 C. 4,526
- The Police won the Chicago Scavenger Hunt in this years Food Checkout Day?
A. True B. False
- Can you name the 4 Ronald McDonald Houses located in Cook County?

Answers:

1- C. 31,000 2- B. 3,317 3- A. True

4 - RMH near Advocate Children's Hospital
RMH near Loyola University Medical Center
RMH near Lurie Children's,
RMH near UChicago Medicine Comer Children's Hospital



Cook County schools have brought truckloads of donated items from canned goods to laundry items to individual snack foods. Farm bureau has proudly accepted and transported the boxes to the Ronald McDonald Houses to share with their families in need. Contests have challenged schools to donate the most pounds, meet the Wishlist requested or decorate the best boxes.

Our programs are in regular need of volunteers and we encourage you to contact us if you or a family member would like help. Opportunities range from helping at our Giant Pumpkin Contest to stuffing envelopes for school programs. Our needs change throughout the year as programs evolve so please drop us a note if you'd like to share your talents as needs arise.

Choose your prize:

Choices include a \$25 Beggar's Pizza Gift Card, a \$25 Home Run Inn Gift Card, OR *3 AMC Movie Tickets *AMC Yellow tickets not valid in California, New York & New Jersey.

Complete the Word Search puzzle for your chance to win! Winners will be contacted by mail.

Mail to: Cook Co. Farm Bureau
Ag Adventures Word Search
6438 Joliet Rd
Countryside, IL 60525
Fax to: 708-579-6056
Email to: FBcooperator@gmail.com

Complete and submit an entry every month all in 2019 and your name is automatically entered into an "End of Year" drawing for a gift basket full of ag themed goodies. Good luck!

Last Month's Word Search Winner Is

Bronislawa Kalemba

March Word Search

O U Y T N I V U C O H W I Y Y
N M A R V H X E O H W K A Z O
K J D J T O M N H Y Z P O L T
S E T D Q N L N O P K R M V Q
G X U H K R A U M B O N E W P
C B O B O K N P N A C L A S O
T A K C O L L E C T I O N H P
S C C S X Z E V Z B E C X Z T
I K E D T A S N O G H E K X A
L P H N M C N M N I L C R N B
H A C U H X E I L A D F S H S
S C D O P R P D M E M B E R S
I K O P A L R N O I T A N O D
W L O C E E Y L I M A F J U R
S W F H N M Z R I X O P Y I V

Backpack	Members
Care Mobile	Pantry
Children	Pop Tabs
Collection	Pounds
Donation	Schools
Family	Thank You
Food Checkout Day	Volunteer
Helping	Wishlist

Name: _____

Phone #: _____

Membership #: _____

(Membership # is located on front of paper)

If you were to win, check your preference:

___ Beggar's Pizza GC ___ HRI GC ___ 3 Movie Tix
(If a choice is not made, movie tickets will be sent)

Deadline is the 20th of each month.