



Co-Operator

official publication of the Cook County Farm Bureau®



Scan for more farm bureau info. & events

A "staple" in the Farm Bureau member's home since 1938

Mission: To serve all members of the Cook County Farm Bureau® with meaningful and beneficial programs that reflect our Agricultural Heritage.

Vol. 93 No. 6

Countryside, IL 60525

www.cookcfb.org

June 2019

Mark Your Calendar

JUNE 2019

8 & 9	Beekeeper Training 1st Year	Pg. 1
12	Stickney-Forest View Children Library program	Pg. 11
19	Evergreen Park Children Library Program	Pg. 11
28	CCFB Young Leaders Volunteer in Aurora	Pg. 1

JULY 2019

19	Hodgkins Children Library Program	pg.11
11	North Riverside Children Library Program	pg.11
15	Morton Grove Children Library Program	pg.11
16	South Holland Children Library Program	pg.11
22	Palatine Children Library Program	pg.11

HOLD THE DATE!

100year Anniversary Celebration Open House
 Saturday, March 28, 2020
 9 AM to noon
 CCFB Building
 6438 Joliet Road, Countryside IL.

For participation details on these programs and activities, check out the related information in this publication, go to www.cookcfb.org, or contact the office at 708-354-3276.

You can register for most programs using the Member Service Center at www.cookcfb.org.



Cook County farmer Gerry Kopping discusses horse care and boarding with 'New Commissioner Tour' participants during a May visit to Kopping Farms in Lemont. Tour participants explored the farm and discussed horse care and feeding. Kopping Farms is situated on 60-acres and home to over 100 horses. Kopping Farms is owned and managed by Gerry and Linda Kopping who also farm 600-acres of corn, soybeans, wheat, and alfalfa in Cook and Will Counties.

Question of the Month

The Illinois Agricultural Association Credit Union (IAACU) recently announced that it will begin offering members with businesses what kind of loans?

☆Bonus☆:

What page of this publication is CCFB mascot Corny Calvin "hanging out" on this month?

Call the Farm Bureau at 708-354-3276, fax your answer to 708-579-6056 or email to fbcooperator@gmail.com to enter the drawing for a \$25 gas card. **(Please include Name, FB# and phone number)**

May winner is
Deborah Mullens

How many female farmers are in Cook County according to the results of the 2017 Census of Agriculture?

Answer: 110 Females

Cook County Farm Bureau® Centennial Photo Contest

Join us as we kick off the Cook County Farm Bureau Photo Contest! We are holding this contest to obtain usable and appropriate photos that accurately portray today's agriculture in Cook County. Win one of three cash prizes in three different categories.

Categories:

- 1) Cook County Agriculture
- 2) Kids in Agriculture
- 3) Livestock & Farm Animals

Prizes:

Photos will be selected from each of the three categories. The winners will receive a cash prize and photos will be featured in on our 2020 commemorative 100 year anniversary calendar, on our website and social media.

1st place: \$100

2nd place: \$75 • 3rd place: \$50

All entries will receive 1 complimentary movie voucher (limit 1 per member).

Go to www.cookcfb.org to learn more and to submit entries. The contest is open to all members in good standing.

1st Year Beekeeper Training Class



When: Saturday, June 8th, and Sunday, June 9th | 9 AM – 3 PM

Where: Cook County Farm Bureau | 6438 Joliet Road, Countryside

Fee: Two-day course is \$75.00 for CCFB or CDBA members

Register: Call the Farm Bureau at 708-354-3276; credit card accepted

It's a working lunch, bring your own. Beverages & refreshments provided. Full Details at www.cookcfb.org/stay-updated.

Pete Soltesz and Kim Kulton of the Cook DuPage Beekeepers Association conducted a weekend Beginning Beekeeping Class at the Farm Bureau. More than a dozen bee enthusiasts will launch into the world of bees!

Cook County Farm Bureau Young Leader Group is volunteering at Aurora Feed My Starving Children on Friday, June 28th, 2019 from 8-9:30 PM. Please call the office for more info or to volunteer.

Classroom Visits Wrap Up for 2018-19 School Year



Pictured are (front) Jim Bloomstrand, Toni DeLaurentis, Diane Merrion, Jill Drover, and (back) Valerie Jones, Sarah Koukol, Kathy Lesser, Linda Schaeffer, Amy Toth, Linda Dunn

Our Agriculture in the Classroom Program just wrapped up its 32nd year of visiting classrooms in Cook County. The vision that began with Mrs. Gail Petersdorf (who worked many years as the Ag in the Classroom Coordinator) continues today with some of the same schools and teachers, but a whole new set of students who are excited to learn. Enough cannot be said or written about our team of presenters who are second to none in their dedication to our program and to Gail's original mission. They travel far and wide through our county and each has a unique way of captivating young learners.

Our focus continues to be with 4th grade classrooms; however, we are now providing more customized lessons to connect to teacher requests who are studying some aspect of agriculture in their curriculum at other grade levels. We do not base our impact solely on numbers as they don't always represent the difference we make in a

Continued on page 4

What's Up?

On May 8, 2019, some newly elected Cook County leaders and their staff participated in a farm experience at Ted's Greenhouse and Kopping Farms so that they would know more about local agriculture. Following the tour, we asked participants the following question: *What was your largest take away or "aha moment" during the May 'New Commissioner Tour'?*



Commissioner Cameron Davis, Metropolitan Water Reclamation District: *"How hard and how willing Ted's Greenhouse works to accommodate special requests."*



President Janet McCabe, Cook County Farm Bureau®: *"I'm excited by the willingness of Cook County Commissioners and their staffs to experience Cook County farms first-hand. It's wonderful to see honest curiosity and an interest in agriculture."*



Cook County Commissioner Kevin Morrison's Staff- Jessica Beezhold, Ted Mason, and Justin Koziatek: *"We were incredibly impressed with both farms that we visited. Each one specialized in a vastly different, but incredibly important, part of our economy. It was interesting to learn how each farm has been able to adapt over many decades to meet the changing needs of their clientele. These business owners work countless hours to keep their businesses successful, and they are an example to all for their dedication."*



Dan Biernacki (pictured center) discusses the transplanting process with Cook County Board of Commissioners staff members Chris Provenzano from Commissioner Sean Morrison's office; Jessica Beezhold from Commissioner Kevin Morrison's office; and Justin Koziatek from Commissioner Kevin Morrison's office and Karen Biernacki during an early May 'New Commissioner Tour.' The New Commissioner Tour is an informal program designed to connect small groups of newer commissioners and staff with Cook County farmers and farming. Tour participants visited Ted's Greenhouse in Tinley Park. The greenhouse offers a variety of annuals, perennials, biennials, herbs, vegetables, and specialty stock. Ted's Greenhouse is owned and operated by Dan and Karen Biernacki as well as Ted Biernacki. Collectively, they have over 100-years of experience in the greenhouse business.

Illinois Lawmakers to Consider Capital Construction Plan

The capital construction plan for road construction projects took yet another interesting turn this past May. Senator Martin Sandoval, Chairperson of the Senate Transportation Committee, introduced a new amendment that includes a Motor Fuel Tax and other fee increases.

In a surprise counter move Representative Mike Zalewski, Chairperson of the House Revenue Committee successfully adopted an amendment to House Bill 391 containing very similar language to what was introduced by Senator Sandoval.

The proponents of House Bill 391 and House Bill 3233 estimate the changes will generate \$2.9 billion annually. The contents of the bills are:

- The Motor Fuel Tax (MFT) on gasoline and ethanol blends would be increased from \$0.19 to \$0.44 per gallon. MFT on diesel fuel would increase from \$0.215 to \$0.54 per gallon.
- Truck and trailer registration for all classes of trucks are increased \$100 annually. This includes farm plates.
- First division vehicle registrations (cars & non-D plate pickup trucks) increase from \$98 to \$148.
- Titles, duplicate titles, and replacement titles to increase from \$95 to \$155 (\$60 increase).
- Driver's License fees increase from \$30 to \$60.
- Electronic Vehicle Registration fees go from \$35 for two years to \$1,000 annually.
- All MFT, registration, and license plate fees will be adjusted annually by the consumer price index (CPI) (not to exceed a 2.5% increase) every year beginning in 2021.
- The commercial distribution fee (CDF) on trucks would be repealed.
- County MFT taxes in DuPage, Kane, and McHenry will be allowed to increase from a maximum of four cents per gallon to eight cents a gallon; it also adds Lake and Will to this authorization. This will also be automatically indexed for CPI annually.
- Reauthorizes the Regional Transportation Authority (RTA) to impose a public transportation tax and/or a motor vehicle parking tax even when the RTA imposes a sales tax.

The passage of a capital improvement plan is being closely monitored by the Farm Bureau. The issue and the subsequent fee increases will be examined in the context of Farm Bureau's policy.

Soybean Fun Facts!

- Soybeans are small round seeds, each with a tiny, brown spot called a hilum.
- Each soybean plant grows 60-80 pods, each with 3-4 beans inside.
- The soybean is used for animal and human consumption, as well as consumer and industrial use.
- Farmers in China began growing soybeans over 5,000 years ago.
- One bushel of soybean weighs 60 pounds.
- One bushel of soybeans provides 11 pounds of crude soybean oil and 47 pounds of soybean meal.
- Soybeans are a source of high-quality protein and contain all eight of the essential amino acids.
- The soybean plant sprouts small flowers which grow into small pods of soybeans.
- The soybean is one of the most versatile seeds grown in the world.
- In 2018, Illinois farmers grew 699 million bushels of soybeans, making them the #1 producer in the U.S.
- The soybean is the highest natural source of dietary fiber.



Gratitude Journal

Each month, there are people that go out of their way to lend a hand to help with our cause in many ways, big and small. We appreciate it greatly!

The Cook County Farm Bureau thanks...

- The Ag in the Classroom presenters that provided students (over 30,000) in Cook County such a wonderful year of agricultural education lessons and connections.
- Mother Nature for cooperating by partially shutting off the rain and allowing farmers to plant their fields and the local farm producers that continue to be optimistic and patient.
- The Master Gardener volunteers that staff the Cook County Farm Bureau Master Gardner Resource Center on Mondays and Thursdays, fielding member questions on the in person, by phone and through email.
- Cook County elected officials that seek to understand and gain knowledge about area farming and agricultural practices and needs.
- The many youth (over 130) that entered this year's Ag Literacy bookmark contest. There were so many creative and skilled artists that entered.
- Our great group of Country Financial Representatives that provide financial security to so many of our members and help clients understand the important partnership and relationship between the Cook County Farm Bureau and Country Financial.
- The many local food pantries in the Cook County area that will be participating in this summer's Food Pantry Challenge sponsored by the Public Relations Team of the Farm Bureau.

Co-Operator

published monthly
 Cook County Farm Bureau
 6438 Joliet Road, Countryside, IL 60525
 (ph) 708-354-3276 (fax) 708-579-6056
 (e-mail) ccfb@cookcfb.org (website) www.cookcfb.org
 USPS No 132180 Periodical Postage Paid at LaGrange, IL 60525 & additional mailing office

Editor Bob Rohrer	Copy Analyst Ashley Christensen	Copy Development CCFB Office Staff
-----------------------------	---	--

Officers & Directors
 Janet McCabe, President
 Michael Rauch, Vice President
 Ruth Zeldenrust, Secretary-Treasurer
 Dan Biernacki James Bloomstrand Roger Freeman
 Patrick Horcher Gerald Kopping Tim Stuenkel
 Mark Yunker James Gutzmer Todd Price

Farm Bureau Manager
 Bob Rohrer

Office Staff Melanie Paffumi Juanita Ramos Diane Merrion	Bona Heinsohn Bob Heine Kelli McSherry	Katie Smith Debbie Voltz Jill Drover
--	--	--

Affiliated Companies
 Jeff Orman Insurance Agency Manager, South Holland
 Victoria Nygren..... Insurance Agency Manager, Chicago North
 Open Insurance Agency Manager, Chicago South
 Jack Smith Insurance Agency Manager, Chicago Northwest
 Sharon Stemke ... Insurance Agency Manager, Chicago Northeast
 Cary Tate Insurance Agency Manager, Orland Park
 John Tuttle General Manager, Conserve FS
 Postmaster - Mail Form 3579 to 6438 Joliet Road, Countryside, IL 60525
 "Co-Operator" (USPS No 132180) is published monthly as a membership publication for \$2.50 per year to members as a part of their annual membership dues by Cook County Farm Bureau, 6438 Joliet Road, Countryside, IL 60525. Periodical postage paid at LaGrange, IL and additional mailing office. Postmaster: send address changes to the Co-Operator, 6438 Joliet Road, Countryside, IL 60525.

The "Co-Operator", the monthly publication of the Cook County Farm Bureau®, is available to members through mail delivery, email, or by viewing online at www.cookcfb.org. Members that wish to receive the publication solely by email can let us know by sending an email to juanita@cookcfb.org with the subject: E-Cooperator.



Downwind

by Bob Rohrer, CCFB Manager

“Osage Orange and More CCFB History”

At the time of the creation of the Cook County Farm Bureau (1920), many farms were diverse, raising different types of livestock including cows, sheep, pigs and horses, as well as growing a variety of crops including corn, soybeans, hay, wheat, oats and vegetables. To keep the livestock in the pasture or out of the crop fields, there were a variety of fencing options used by farmers including woven wire and barbed wire. However, an inexpensive fencing system popular in those days was the use of the Osage Orange tree (I always referred to it as a hedge tree).

Instead of your traditional fence, farmers took cuttings from an Osage Orange tree and planted them along the fence line in a tight, uniform row. These cuttings took root and sprouted into trees, effectively creating a living fence along the property line. In the 1800s, John Wright, editor of *The Prairie Farmer* magazine, described the hedge fence as “horse high, bull strong, pig tight”.

Back when I was a kid, many rural fence lines still featured the unmaintained remnants of the hedgerow planted many years prior. It was fascinating to see these various hedge trees lined up in a straight row on the edge of fields, 20 to 30 feet in height. I remember these trees having three distinct features:

1. Needle sharp thorns 2 to 3 inches in length (they would pierce through the sole of a shoe)
2. A round, but bumpy green fruit the size of a softball that was extremely hard (the hedge apple)
3. Wood that was tough and gnarled (native Americans allegedly used them for bows and war clubs. My dad, the Farmer, thought they were better used as fence posts)
Yes, weapons of my youth!

Inevitably, my brothers and I were compelled to throw the hedge apples. This led to hedge ball wars. My brothers had strong throwing arms, much to my chagrin. This “sport” became a special version of dodgeball. When you got hit, you were truly out. I’m surprised this sport never caught on in the civilized world. Wisely, we created special rules such as you can’t throw the hedge balls above the waist and there had to be a 50-foot distance between you and your opponent. We had plenty of loud arguments about brothers who frequently violated the rules.

Surprisingly, we were reluctant to use the thorns as weapons (at least on siblings). I remember being told that a deadly infection would result if a thorn pierced deep into human flesh. Probably, my mom told us that as a preventative measure to save on tears. I also assumed that the hedge apple fruit was also poisonous but have since learned they are not.

Most of our hedge apple wars broke out when we were supposed to be building a fence out of the hedge posts kindly provided by the Farmer. Why hedge posts? The dense wood made for a tough, rot – resistant post (it is very difficult to drive a nail or staple into when fence building, Dad!).

As the 100-year milestone anniversary of the Cook County Farm Bureau® draws nearer (March 2020), we continue to research the history of the Cook County Farm Bureau. This past month, I spent time reviewing researching 1950 through 1959. These years were dominated by post-World War II recovery and production efforts.

I also began seeing names of people that I am familiar with...Harold Bergman, Walter Sass, Carl Bormet, farm advisers Bill Whiteside and Jim Fizzell, Bill Stelter, Henry Andresen, Simon DeBoer, Ray Knieriem, Arthur Brandau, Cornelius Rietveld and others I met or heard about at one time.

The past is intersecting with the present and it is so amazing to be able to personally see the impact of yesterday’s leadership on today’s Cook County Farm Bureau!

Enjoy reviewing the 1950–59 decade of history below...

Bob can be reached at brohrer@cookcfb.org.

CCFB History: 1950-59

1950

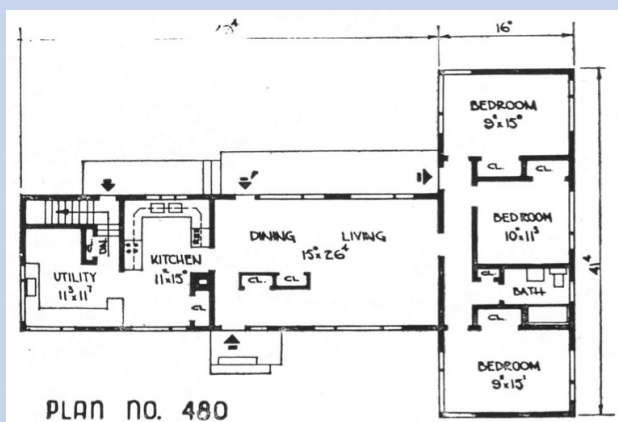
- The board approved a resolution that provided for the tax objection service through the Farm Bureau for members and nonmembers.
- 7 townships in northern Cook formed a Soil Conservation District.
- The board approved a committee to meet with Campbell and Libby regarding farmer vegetable production contracts.
- Federal legislation (the Brannan plan) was being considered to create a separation between the Farm Bureaus and the Farm Advisers that are a part of the Extension Service.

1951

- Mr. C.F. Mees was hired to serve as farm advisor beginning January 1, 1951 to replace Mr. C.A. Hughes.
- Charles Erickson was elected President, taking over from L. W. Pohlman.
- It was announced that farmworkers can now be covered by Social Security. The CCFB provided guidance to farmers to help in the understanding and administration of the new rules.
- The CCFB soil technician, H.L. Cletcher, reported that his lab had between 4,000 and 5000 soil samples to analyze in 3 weeks.
- The CCFB board announced the purchase of 2 unimproved lots in Tinley Park for the purpose of building a new Farm Bureau building.

1952

- The CCFB encouraged farmers to vaccinate their hogs with hog serum to prevent deadly cholera.
- Details were provided to members on new truck license fees and rules in Illinois. At one point, the new trucking regulations were ruled unconstitutional. Then they went into effect. Then, a judge granted an injunction to prevent the Secretary of State from enacting. The state police began arresting truckers that were not properly licensed. Farmers were in a state of flux not knowing what to do.
- The CCFB provided members with plans about the “basic farmhouse” no. 480 which featured conveniences and an economical layout



- The board went on record as opposing the South Cook Mosquito Abatement District due to the tax burden it would place on members and universal military training for all young men due to

the duration and labor challenges it would provide on the farm.

- Farmers in Rich and Bremen townships protested a proposal to take 6,000 acres to develop a military airfield.
- The CCFB announced completion and held an open house for members to view the new Farm Bureau building built in Tinley Park area because it was more rural and agricultural than the Blue Island location.

Our Dream Comes True

Blue Island Farm Bureau Office
Moves to Tinley Park May 15



- The Board of Directors went on record as opposing the Cook County Forest Reserve in purchasing food agricultural land for forest preserve purposes.

1953

- FB members Donald Doctor, James Heatherwick, Orland Park; Cornelius Rietveld, Chicago Heights; and William Stelter, Tinley Park were elected as charter directors to the South Cook Soil Conservation District.
- A livestock outlook meeting was held to provide information about how the Korean war truce would affect farm prices, how the drought in the Southwest would impact cattle and sheep markets, and how raising the federal debt ceiling would impact farmers.

1954

- The CCFB Vegetable Marketing Committee met with officials from Campbell Soup and Libby Companies to discuss the upcoming growing season canning contracts for farmers.
- Secretary of Agriculture Ezra Taft Benson spoke to the members at the IAA Annual meeting in Chicago at the Sherman Hotel.
- Representatives from CCFB and other area County Farm Bureau’s met with the Illinois Tollway commission on several Tollway proposals and communicated to members about the projects.

1955

- The CCFB announced it would assist members in filing property tax protests.
- The board went on record of opposing the extension of the Chicago sanitary sewer system resulting in the formation of a new drainage district.
- The Organization conducted a field study and report of Michigan specialty production and marketing seeking ways to help local farmers sell and market to consumers.

1956

- Informational workshops and meetings on the topics of wills/estates, policy development, property taxation and beautifying the landscape of homes were held for members.
- Information was provided to farmers on the new federal “Soil Bank” program that was making its way through Congress.
- The CCFB helped 50 + vegetable growers in the North Cook area organize a new vegetable marketing cooperative, the Arlington Valley Growers, Inc.
- The CCFB assisted members in reclaiming federal gas taxes paid that were used on the farm.

1957

- The CCFB provided information regarding the potential of incorporating farms to limit liability, simplify transfer of ownership, continuity in in case of death, increase efficiency and tax impact.
- A new group, the Cook County Women of Farm Bureau Committee, was formed with 20 members (chaired by Mrs. Clarence Heinkel). Mrs. Harold Bergman served on the Illinois Farm Bureau committee.

1958

- Henry Eichholz was elected as the new President of the CCFB.
- The IAA delegates approved moving the organization’s state headquarters from their building at 43 E. Ohio in Chicago to 1701 Towanda Ave. in Bloomington. The Illinois Farm Bureau headquarters had been in Chicago for the first 43 years of the organization’s existence. CCFB was opposed to the proposal.
- A University of Illinois farm economist reported that the average farm family of five needs \$7,000 of net income for an adequate standard of living.
- G.W. Blanchard was named Sec. of Organization for the Cook County Farm Bureau, succeeding G. H. Mills.
- Jim Fizzell, assistant farm advisor, provided information to members about Dutch Elm disease, trees, horticulture and lawn care.

1959

- The Arlington Valley Growers met with Chicago Mayor Daley regarding making improvements to the Randolph Street Market.
- The CCFB opposed subsidy to the Chicago Transit Authority based on the need for new and increased taxes.
- Cook County farmers were up in arms regarding a hearing on amending the Cook County zoning ordinance that would eliminate farm property as a classification.
- The end of an era... Armour and company announced it would discontinue slaughter of hogs in Chicago, the last national packer to operate a facility in the city.
- The organization provided members with discounted pricing on “no trespassing” and “no hunting” signs.
- Illinois Farm Bureau Pres., William Kuhfuss, served as the keynote speaker for the County annual meeting attended by a record-setting 1,000+ members.
- Country Mutual and Country Life Insurance Companies offered a drawing for a new Jeep and many other prizes for member feedback regarding new trademark logo.

Master Gardener Resource Center is Ready to Serve Members

The Master Gardeners are back in the Farm Bureau office to answer questions from members and the general public related to gardening and horticulture.

Master Gardeners are available in the Cook County Farm Bureau suite located at 6438 Joliet Rd., Countryside, Illinois, during the office hours of 9:00 am to 1:00 pm on Mondays and Thursdays each week throughout the growing season. Call 708-354-3276 or email mastergardener@cookcfb.org.

General topic areas that can be addressed include soil test recommendations, plant disease issues and treatments, horticulture related questions, pest identification and treatment, and more. Commercial related questions will be forwarded to the University of Illinois Extension professional staff.

The Master Gardener Resource Center is a partnership between the Cook County Farm Bureau® and the University of Illinois Extension designed to provide service to local members and the general public.

Classroom Visits Wrap Up for 2018-19 School Year

Continued from page 1

young life. We are proud, however, that our numbers show a continued demand for our program. Our presenters visited over 1,200 classrooms this school year reaching more than 30,200 students during those visits. We are excited to see our program reaching across grade levels while maintaining our presence at over 300 elementary schools each year.

Every summer, our classroom programs are reviewed and revised to reflect the ever-changing face of agriculture and education. Students are intrigued by the increasing use of technology, new methods of growing food and career opportunities connected to our industry. We thank the teachers who invited us into their classrooms and look forward to reaching many new educators during the 2019-20 school year. Requests for visits can be made via email at aitc2@cookcfb.org or by calling 708-354-3276.



Statement from the Illinois Farm Bureau Regarding Tariff Increase on Chinese Imports

Andrea Casali
Media Relations Specialist
Illinois Farm Bureau
309-557-2083
ACasali@ifb.org

The following is a statement from Illinois Farm Bureau (IFB) President Richard Guebert, Jr., regarding the recent tariff increase on Chinese imports.

"The Illinois Farm Bureau is disappointed in the breakdown of the negotiations between China and the U.S. to address long standing trade issues between the two nations. We are also deeply concerned about the imposition of the retaliatory tariffs that could further impact agriculture.

"Tariffs historically have not been good for the farm economy. Farmers are on the front lines of this trade war and are sacrificing their livelihoods and it hasn't gotten better. We are sitting on a huge inventory of grain while our export markets are diminishing.

"Corn and soybean prices are depressed, combined with a delayed 2019 planting season due to heavy rains, and farmers are facing their sixth straight year of declining net farm income.

"If this trade uncertainty lingers, we will certainly be looking to the Trump Administration for another round of market facilitation payments.

"Farmers continue to bear the brunt of the trade wars."

The Illinois Farm Bureau is a member of the American Farm Bureau Federation, a national organization of farmers and ranchers. Founded in 1916, IFB is a non-profit, membership organization directed by farmers who join through their county Farm Bureau. IFB has a total membership of more than 394,742 and a voting membership of 78,999. IFB represents three out of four Illinois farmers.



The Summer issue of Illinois Farm Bureau Partners magazine should have arrived in your mailbox. Be sure to check out the various farm feel-good articles on great places to see in Illinois, local food facts, recipes, nutritional information, gardening tips, travel information, and the special Cook County Farm Bureau Page. More information, articles, contests, and past issues are available at www.ifbpartners.com.

Meet a "Face" of the Cook County Farm Bureau®

This month we are highlighting a Cook County Farm Bureau Ag Lit Committee Member: **This month's "Face of CCFB" is ...**

Terry Landschoot



- Terry loves to travel (food and wine tours) to learn about different cultures and farm to table cooking and the importance that agriculture plays in life all over the world.
- Terry has a MS, in Biochemistry and taught High School Food Chemistry, Chem and AP Bio for 34 years.
- Terry is currently completing a 2 year wine certification course.
- Terry has two children (in their 30's) who are also high school teachers and an 8 month old grandson.

HOW HAS AGRICULTURE LITERACY IMPACTED YOU PROFESSIONALLY AND PERSONALLY?

Many adults and most students (even high schools) have lots of misconceptions about agriculture and the importance it plays in everyday life. Understanding food and making smart food choices impacts us every day of our life!

WHAT FUN FACTS ABOUT AGRICULTURE DO YOU SHARE WITH OTHERS?

That soy is the #2 planted crop in Illinois... and it's used in a huge variety of foods/household products.

WHY IS IT IMPORTANT FOR MEMBERS TO GET INVOLVED IN THE COOK COUNTY FARM BUREAU?

To help "spread the news" of the importance of agriculture in daily nutrition and so that kids can teach this to future generations. This is especially important in an urban setting where most kids have never been to a farm and really don't know the details of where food comes from.

WHERE HAVE YOU TRAVELED TO OR WHAT PART OF THE WORLD IS YOUR FAVORITE VACATION DESTINATION?

Travelled much of Europe, but have returned to Italy 6 times. Have gone on several food and wine tours, studied the local "farm to table" culture there-all sustainable locally grown, fresh foods.

WHAT IS YOUR FAVORITE FARM MEMORY?

Riding a pony at the county festival when I was 5... I was petrified, but felt "regal" at the same time!

WHAT IS YOUR BEST FOOD MEMORY?

Barbecues in the yard with my entire extended family.

WHAT IS YOUR FAVORITE FARM ANIMAL?

A pony.

WHAT IS YOUR FAVORITE CCFB MEMBERSHIP BENEFIT?

Discounts on Hotels, Bulls and Sox tickets.

HOW DID YOU INITIALLY GET INVOLVED IN FARM BUREAU?

By applying for their Food Science Grant and winning the award. I also taught High School Food Chemistry and found some great applications for the curriculum.

WHAT IS YOUR FAVORITE FARM SMELL?

Fresh cut grass.

Your Orland Park Agency



Cary Tate
708-226-1111
Agency Manager
Orland Park, IL



Piero Setta
708-226-0431
7601 W. 191st St
Tinley Park, IL



Jim Andresen
708-633-6490
17605 S Oak Park Ave
Tinley Park, IL



Thomas Geraghty
708-425-9700
5003 W 95th St
Oak Lawn, IL



Mark Wright
708-403-2416
7601 W. 191st St
Tinley Park, IL



George Parthemore
708-226-1896
9432 W 143rd St
Orland Park, IL



Mike Skrabis
708-226-1666
9731 W 165th St
Orland Park, IL



Tony Palumbo
708-403-5708
7601 W. 191st St
Tinley Park, IL



Mike Spadoni
708-425-1825
3923 W. 95th St
Evergreen Park, IL



Bob Johnson
708-429-9422
17605 S Oak Park Ave
Tinley Park, IL



Dan Stumpf
708-614-1688
17605 S Oak Park Ave
Tinley Park, IL



Bill Thompson
708-361-1304
106 Stephen St
Lemont, IL



Nora Beverly
708-429-7789
1938 Lincoln Highway
New Lenox, IL



Brian Zielinski
630-257-6100
106 Stephen St
Lemont, IL



Nick Burke
708-425-1816
3923 W. 95th St
Evergreen Park, IL



Mike Thauer
708-425-1559
3923 W. 95th St
Evergreen Park, IL



Erica Storrs-Gray
708-671-1465
12130 S Harlem Ave
Palos Heights, IL



Terry LaMastus
708-754-5900
3308 Chicago Rd
Steger, IL



Joe Voves
708-425-1527
3923 W. 95th St
Evergreen Park, IL



9731 W 165th St Suite 36 Orland Park, IL 60467
708-226-1111



Mr. Dan Hampton, Hall of Fame defensive lineman for the Chicago Bears (#99), served as keynote speaker for the Illinois Farm Bureau Managers Conference recently. Mr. Hampton spoke about the keys to champions being teamwork, goals, hard work and a never-quit attitude. CCFB Manager Bob Rohrer had the opportunity to discuss agriculture in Cook County with Mr. Hampton as well as obtaining an autographed football for a future CCFB Foundation silent auction item!

What Farmers Can Do Now to Support Monarchs, Pollinators

By Kay Shipman, FarmWeek

Farmers are taking steps to support monarchs and other pollinators, including:

- Planting pollinator habitat, including milkweed and other flowers that bloom from May through October along roadsides, infield corners and around your homestead.
- Practicing pesticide stewardship by following pesticide labels and monitoring surroundings for sensitive areas and endangered species.
- Altering mowing practices. Don't mow right of ways unless needed for safety, problematic weeds and wood encroachment. Discuss pollinator and wildlife habitat benefits with landlords to negotiate flexible mowing practices and leases.
- Posting signs at pollinator habitats to raise awareness.
- Sharing your conservation efforts, including planting habitats, with local groups and the media.
- Working with FFA, 4-H and Agriculture in the Classroom to create habitat and provide information about pollinators.
- Reaching out to the Illinois Farm Bureau to be connected with pollinator researchers and possibly host research projects on your farm.

Giant Pumpkin Webinar a Hit



The Farm Bureau hosted a How to Grow a Giant Pumpkin Webinar on May 14th. Twenty-one area growers heard from experts in the field, George W. Hamilton, Extension Field Specialist, Food & Ag, UNH Extension and Steve Geddes, Giant Pumpkin Grower-US Record holder! All participants were mailed complimentary Prize-Winner Seeds and invited to our Giant Pumpkin Contest, on October 5th! Webinar recording can be accessed at: <https://cookefb.org/discover-local/community-programs/profile/local-food-programs>.

Stump the Staff!

Every day, the Cook County Farm Bureau office fields many phone calls and provides information and answers to a variety of questions. Stump the Staff is designed to highlight some of the questions that we frequently receive...

Q: Which Theater does the Cook County Farm Bureau have at a discounted movie price?

A: Discount movie tickets are available at the Farm Bureau there are three different movie theaters to choose from...

AMC Theater- ticket priced at \$9.50 (use at any time).

Marcus Theater- Silver ticket priced at \$7.00. Void on films listed as an Extra Special Attraction (marked with an 'X'- the first 14 days of select features) Not valid for VIP Seating, when valid, 3D and D-Box surcharge apply.

Marcus Theater- Platinum ticket priced at \$8.00. Valid for any movie, anytime at all Marcus Theatres locations! Not valid for VIP Seating, 3D or Super Screen DLX. Extra charge will apply if going to see a movie in 3D or Super Screen DLX.

Regal Theater -ticket priced at \$9.50 Valid for any movie any time.



Topiary is the Hot New Thing



Staff stopped in at Bultema's FarmStand & Greenhouse in May and learned that Topiary Planters are all the rage this Spring! Many unusual containers and arrangements can be created. We especially loved the pigs, monkeys and dogs!



Visit their complete garden center at BULTEMA'S FARMSTAND & GREENHOUSE located at -2785 E. Lincoln Highway, Lynwood, IL.



WANT A FREE MOVIE TICKET?

Want a free movie ticket? Encourage your family, friends and neighbors to join the Cook County Farm Bureau as an associate, farmer or professional member. If they join, you will receive a free movie ticket! Call our office at 708-354-3276 to let us know that you referred a member.

Individuals can join the Cook County Farm Bureau by going to www.cookefb.org and clicking on MEMBER CENTER.

Affiliated Country Financial reps or Staff members do not qualify. Valid only 6/1/2019 through 12/31/19.



Gwen Shaw
Financial Representative

Considering a new career?

As a COUNTRY Financial® representative, you can make a difference in your community by helping customers achieve financial security. If you are one part analytical, one part creative and one part compassionate, let's get together!



Robert Saunders

Agency Sales Recruiter - Northern Illinois & Chicagoland

(309) 821-5226

Want to book some time for us to talk?

Go to <https://calendy.com/rob-at-country>

0518-585HO



Agricultural Literacy & Public Relations

AG LIT BIT By Diane Merrion



Diane Merrion, CCFB Director of Ag Literacy

After a 30-year hiatus, I returned to Germany and Austria with my husband to celebrate our 30th anniversary. We had visited this region on our honeymoon and felt it would be the perfect way to kick-off the next 30 years. It didn't disappoint! I must say that on our trip many years ago I didn't have the same curiosity about farming as my focus then was more on food (not where it came from, but how delicious it tasted), scenery and local traditions.

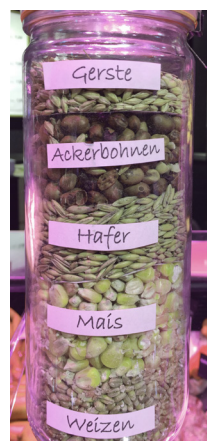
Our typical vacations are not meticulously planned as we design our days to explore via car to stop where we see interesting sights and then find that perfect spot to seek a room for the night. This can be challenging when you don't speak the local language but has always worked out for us due to the kindness of strangers and the welcoming spirit of locals.

Our first glimpse of the German countryside resulted in several road stops to take pictures of the breathtaking yellow fields of something. With no Wi-Fi (which was a strange feeling) we guessed and guessed what in the world this crop was and couldn't stop pulling over to take more pictures as the contrasting yellow and lush green fields were amazing.

Shortly after that, we were on the road with cows right next to us followed by endless other 'agriculture' moments. We were fortunate to be there during spargel (white asparagus)

season. Unlike our green asparagus, this grows underground and was in stores, farm stands and even boxes along the road where you could take a box and leave your money behind. I finally had it one night cooked in a light stock with melted butter, a few potatoes and a couple of slices of thin ham.

Our 10 days included seeing many small farms with much diversity. I had so many questions and wished I could pull over to talk with the farmers, however, my mastery of the language didn't go much beyond danke, guten morgen, zimmer and toilette (that



would be another whole column). I did try to converse with a local butcher who had a jar up on the counter above the beef in one case (see photo). I came to understand that this was used to show the consumer what the animal's diet was for the meat sold below. We tried to talk more, but language got in the way.

While I could fill this Co-Operator with more, it suffices to say we enjoyed a wonderful time exploring the culture and agriculture abroad. FYI, we learned that rapeseed, a flowering member of the family Brassicaceae (mustard or cabbage family) was in full yellow bloom on those farm fields. The crop is cultivated mainly for its oil-rich seed and is grown extensively in Germany.

Consumers and Educators Engage in Experiential Learning Opportunity



Participants from Rolling Meadows High School got to make a fashion statement during their tour at John B Sanfilippo & Son, Inc.



Plants filled the greenhouses at Hampshire Farms as the peak season deliveries were getting ready to be shipped to retailers in and around Chicago

Cook County consumers, teachers, and counselors engaged in conversations about agriculture and agricultural careers during a one-day tour of John B. Sanfilippo & Sons, Hampshire Farms, and Tate & Lisle.

The day began with a tour at John B. Sanfilippo & Sons' corporate headquarters, a leader in the nut and snack food industry. In addition to the tour, Sanfilippo department heads and group leaders discussed the facility's connection to agriculture and careers available at the facility.

Program participants then traveled to Hampshire Farms, a one million square foot wholesale greenhouse that sells perennial plants on consignment to leading home improvement stores. Tour participants discussed the greenhouse business and careers available at wholesale greenhouses. The day concluded with a visit

to Tate & Lyle, a global provider of solutions and ingredients for food, beverage and industrial markets where department heads discussed the career opportunities in their business units locally and globally.

"Thank you for sponsoring this agricultural tour for the educators in Cook County," shared attendee and school counselor Brenda Popovic. "As a career advisor, learning about the opportunities in agriculture and the skills needed to be successful in these careers will help me assist my students to make more thoughtful and deliberate class and career choices."

The tour was hosted by the Cook County Farm Bureau Foundation with funding through an Illinois Farm Bureau® Consumer Communications Grant and the Compeer Financial Fund for Rural America.

2019 "Agriculture in Your Day" Bookmark Contest Winners



1st Place Winner, Kate M. from Chicago

Thank you to the children of Cook County who entered our "Agriculture in Your Day" bookmark contest this year! Some entries came from schools and others from individuals. All of them showed just how much children understand the importance of agriculture.

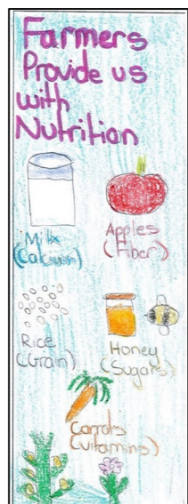
With over 130 entries, it was a tough choice! The winner of the contest was Kate M. from Chicago, who will be awarded a \$25 Amazon gift card.

The runner-up winners were Emily B. from LaGrange, Audrey U. from Mt. Prospect, and Emily M. from Lockport who will each receive a \$15 Amazon gift card. Congratulations to all!

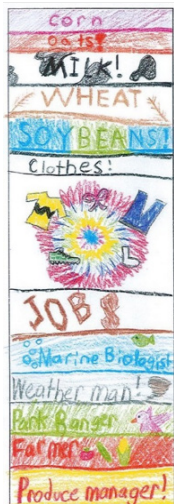
The bookmarks will be given out during our summer library programming and to all 4th grade students who receive Ag in the Classroom Programming next year at their school.



Runner Up Winner, Emily B. from LaGrange



Runner Up Winner, Audrey U. from Mt. Prospect



Runner Up Winner, Emily M. from Lockport

Author Visit with Literacy Coordinators

We were thrilled to have an audience with author Peggy Thomas at our May Illinois Ag Literacy Coordinator meeting in Bloomington, IL. Ms. Thomas is the author of more than 20 award-winning nonfiction children's books including *George Washington Carver for Kids*, *Farmer George Plants a Nation*, *Thomas Jefferson Grows a Nation* and *Full of Beans- Henry Ford Grows a Car* which will be published in later in 2019.

As shared on her website www.peggythomaswrites.com, Ms. Thomas didn't always dream of being a writer. "I grew up with four older brothers, dogs, cats, snakes and even a porcupine. My father was a high school science teacher and my mother was a children's writer, Margery Facklam. Did I always want to be a writer? No. Although I loved to write and read, I dreamed of being a

scientist. But I could never decide what kind of scientist to be. I went to college and earned my Master's degree in anthropology (the study of people and cultures). I didn't start writing until after my daughter was born."

Her discussion with our ag literacy group included an explanation of the research, writing and editing involved in getting a book from the conceptual phase to the published product. It was interesting to learn how, while researching subjects, she often stumbles upon information that forms the basis for her next book.

Ag in the Classroom has many lesson plans connecting her books with ag literacy lessons and Ms. Thomas also has additional teacher guides on her website. Many of her books are available at the farm bureau for a two-week loan period.

Agriculture Adventures for Families

Illinois farmers and home gardeners throughout Illinois are a bit behind this year with the lack of cooperation from Mother Nature. This month we take a fun look at ways to engage your young farmers in understanding how the seeds they plant will result in food production both above and below the soil. Have some fun looking through your produce section if you don't have a garden to open a discussion about just what part of the plants you are eating.



What part am I eating???

Seeds

- Small object that will grow into another plant
- Packaged little plants with food around them (endosperm) and a covering protecting them (seed coat)
- Takes roots and grows into new plants

Includes: Corn, Peas, and Beans

Flowers

- Produce the plant's seeds
- Part of the plant that contains reproductive parts and attracts pollinators

Includes: Broccoli, Cauliflower, and Artichoke

Fruits

- The ripened ovary of a plant containing the seeds
- Part of the plant we usually eat that has the seeds inside
- Protects and nourish the seeds

Includes: Tomatoes, Cucumbers, Eggplant, Pumpkin, and Peppers

Leaves

- Soak up sunlight and carbon dioxide from the air and convert it to food for the plant (photosynthesis)

Includes: Lettuce, Spinach, Brussels Sprouts, Kale, Chard, and Cabbage

Roots

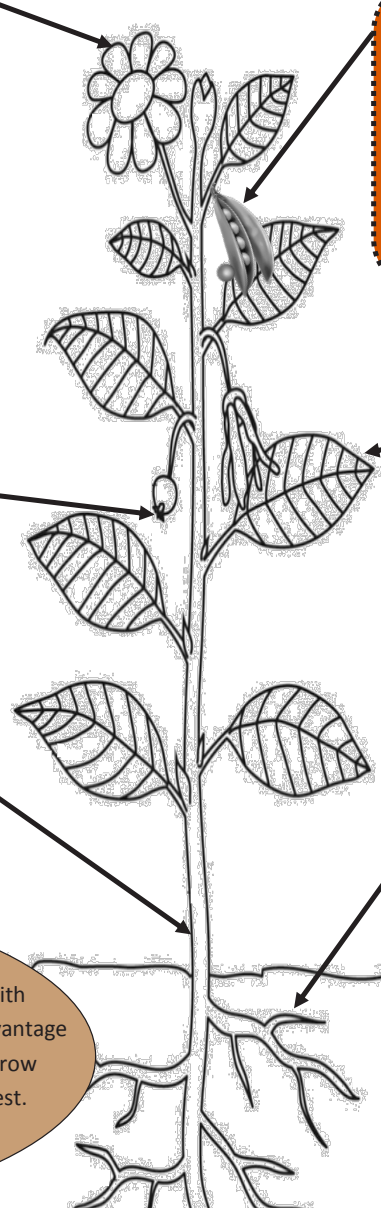
- Help provide support by anchoring the plant under the ground
- Absorb water and nutrients needed for growth

Includes: Beets, Carrots, Radishes, and Turnips

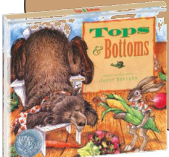
Stem

- Carries water and nutrients taken up by the roots to the leaves
- Provides support for the plant allowing the leaves to reach the sunlight that they need to produce food

Includes: Asparagus, Celery, and Rhubarb



This colorful book by Janet Stevens, focuses on a tale involving a Bear and Hare who form a gardening partnership, with industrious, clever Hare reaping all the vegetable profits. Hare's advantage is his knowledge of specialty crops, knowing what plants grow above and below the ground to plan his share of the harvest. A wonderful introduction to understanding the origins of foods that can be grown in home gardens.



Potatoes are often referred to as root crops. Potatoes are thought to be roots because they grow underground. However, potatoes are not roots. Instead, potatoes are specialized stems that shoot off from the root. These offshoots are called tubers. The potato tuber serves as a massive storage reserve for a range of macromolecules, such as starch and protein.

June Word Search

L N H S V R L I N H G H S L R
 R B G Y T E N M J R Q D O E H
 M O Y Y A N F L O W E R S T F
 P M O V G G E W E E M K S T O
 V C E T P B L I S G P E E U O
 V S A S T E M E R A V P O C D
 E N F R A E W H M T X M T E G
 A Q A K R A Y I J I U L A C T
 T U P Y L O L R E J E N M F O
 N Y I H D O T Z E X N U O D F
 T A V I C W H S H L I D T X Q
 H R M C N T B K Y M E G N U A
 M S O K O N R O C A U C A F I
 H R J P A Y T S A C W Y L Z P
 B N V S T I U R F C J D P C X

- | | |
|----------|-----------|
| Broccoli | Leaves |
| Carrots | Lettuce |
| Corn | Nutrients |
| Eat | Plant |
| Flowers | Root |
| Food | Seeds |
| Fruits | Stem |
| Grow | Tomatoes |

Name: _____
 Phone #: _____
 Membership #: _____
 (Membership # is located on front of paper)

If you were to win, check your preference:
 Beggar's Pizza GC HRI GC 3 Movie Tix
 (If a choice is not made, movie tickets will be sent)

Deadline is the 20th of each month.

Choose your prize:

Choices include a \$25 Beggar's Pizza Gift Card, a \$25 Home Run Inn Gift Card, OR *3 AMC Movie Tickets *AMC Yellow tickets not valid in California, New York & New Jersey.

Complete the Word Search puzzle for your chance to win! Winners will be contacted by mail.

Mail to: Cook Co. Farm Bureau
 Ag Adventures Word Search

6438 Joliet Rd

Countryside, IL 60525

Fax to: 708-579-6056

Email to: FBcooperator@gmail.com

Complete and submit an entry every month all in 2019 and your name is automatically entered into an "End of Year" drawing for a gift basket full of ag themed goodies. Good luck!

Last's months word search winner is...



Annette Drzewiecki



Cousins Bond On and Off Farm

“When’s the next time we’re going to see our cousins?”

That question takes the No. 2 spot behind, “What are we doing tomorrow?” from the mouth of our 11-year-old son. Primarily, he wants to know when “something fun” makes the itinerary, and cousins always fit that description.

Time with farm cousins means laser tag around the farmstead, skipping rocks in the river and pedaling bikes in the farm shop. They chat on two-way radios from tractors and combines at harvest time. They share 4-H pig chores and this summer they will show them together for the first time. With city cousins, our kids love trips to the beach and views from Chicago skyscrapers. They walk to parks, play backyard badminton, golf from a three-story driving range and eat at fun restaurants unavailable in our sparsely populated county.

My kids’ list of wishes for summer break includes time with cousins from both sides of the family. I’ll gladly grant those wishes because cousins hold special, sibling-like friendships. Their relationships grow at birthday parties, the “kid table” on Thanksgiving, family vacations and sleepovers at Grandma’s house. As I grow older, my cousins and I realize that sharing love, joy and grief as a family has kept us connected

since childhood. We understand each other’s histories with no need to impress nor explain inside jokes about Granny’s treadmill.

My cousins and I reminisce about scraping and painting barns, sledding in the cattle pasture, and making up dance routines to the old record player in Grandpa’s “pool room” (as in billiards, not swimming). We showed pigs together and played games past bedtime on New Year’s Eve. We caught lightning bugs and accidentally released them in the farmhouse. We fished strip-mine lakes for bluegill and snacked on Schwan’s ice cream sandwiches from Grandma’s freezer. In recent years, we Illinois cousins twice vacationed together with our cousins on the West Coast, a bond even distance cannot break.

Every summer, my first cousins initiate a game of whiffle ball in the farm yard. Now, second cousins also make up the roster. In that grassy space between the house and farm driveways, we relive childhood memories with our first friends and give our kids reason to ask when we’ll gather again.

About the author: Joanie Stiers, a wife and mother of two farm kids, writes from west-central Illinois, where her family grows corn, soybeans and hay and raises beef cattle.

Family Farm and Food Bytes

MY AMERICAN FARM GAMES APP (FarmWeek) - The American Farm Bureau Foundation for Agriculture has launched a mobile app for four of its My American Farm games. The games include Keys to Stewardship (science), The Great Seed Search (technology), Thrive (engineering) and Operation Peanut Butter (math). The free My American Farm STEM app may be downloaded from the app store or Google Play. Games available in the app are ideal for students in grades 3 to 5.

EGG-CITING POULTRY ADVENTURE LAUNCHED ON MY AMERICAN FARM (AFBF News)-The American Farm Bureau Foundation for Agriculture and the U.S. Poultry and Egg Association, with funding from the USPOULTRY Foundation, have launched a new My American Farm game along with a supporting lesson plan, eComic and activity sheet. The game and resources were developed to help third- through fifth-grade students better understand the poultry and egg industry. In the game, students will adventure through the progression of stages in poultry and egg production. The Egg-Citing Poultry Adventure game is available at www.myamericanfarm.org/classroom.

FARMERS QUICK TO JUMP ON INDUSTRIAL HEMP (The Weekly Review) Within a few hours after Gov. JB Pritzker announced industrial hemp licenses were available on April 30 for the first time since outlawed more than 80 years ago, a steady flow of applications began coming into the Illinois Department of Agriculture website with over 350 applications being received within the first 2 days.

CONSUMERS PLAN TO KEEP EATING ANIMAL PROTEIN (FarmWeek). Two-thirds of U.S. consumers will continue to keep eating animal protein according to global research from Cargill. Roughly 80% of the survey participants said that animal protein can be part of an environmentally responsible regimen and 93% say that it can play an important role in a healthy diet.

IFB SURVEY MEMBERS ABOUT HEALTH INSURANCE In May, the Illinois Farm Bureau emailed questionnaires to voting members to gauge interest in an Association Health Plan (AHP). The 12 question survey asked information about current healthcare coverages, employees, and what members are seeking in terms of healthcare coverage. Voting members who want to participate in the survey but didn’t receive an email can do so by visiting MyIFB at www.ilfb.org to enter your email address.

NEW PRAIRIE FARMS ICE CREAM Prairie Farms Dairy has begun marketing new Premium Small Batch ice cream in grocery stores. The product starts with simple ingredients, including milk and cream sourced from local, family-owned dairy farms, along with sugar. Premium Small Batch is available in 25 flavors including black raspberry chocolate chip, brown butter maple and chocolate malted milkshake.

SOY-BASED DRINKING STRAW WINS CONTEST (Indiana Soybean Alliance). Three Purdue students, making up, Team Story, earned top honors at a recent innovation competition with their entry of a soybean-based drinking straw. The straw, which offers the material consistency of a plastic straw, outperforms the primary commercialized alternative paper straws in quality, price and materials.

NEW RESEARCH ON HONEYBEE PEST (FarmWeek). New research by the USDA Agricultural Research Service and the University of Maryland found clues to the honeybee pest considered the greatest driver of global honeybee colony losses. Microscopic images show the Varroa mite feeds on the honeybee’s fat body tissue, an organ similar to the human liver, rather than a bee’s blood or hemolymph. The results are expected to help scientists develop more effective treatments to help bees cope with the mite that spreads at least 5 viruses. The work also helps explain how Varroa mites cause detrimental effects on honeybees, weakening their immune systems and making it harder for them to store protein from pollen and survive winter.

POLLINATOR HABITAT GRANTS GO TO LOCAL GROUPS ACROSS THE STATE (FarmWeekNow) St. Louis-based Bayer set out two years ago with its Feed a Bee initiative to fund efforts to create pollinator plantings and education efforts throughout the U.S by providing grants up to \$5,000 to establish forage and habitat in their communities and provide an educational component to members of those communities. The grant program has awarded grants to eight Illinois schools, communities and organizations.

We offer wet hosing, bulk tank fills and package lubricants – D.E.F, Oil, Hydraulic, Diesel and Gas for all your needs.

We are a 24/7 Fuel Supplier servicing Illinois – Wisconsin – Indiana

Call us today at 847-994-3010 or visit us online at www.luckysenergy.com

Growing To Serve You Better

New Member Benefits

IAA Credit Union is now offering commercial lending to members who have proprietorships and small businesses. Contact David Warren at 309-557-2164 or dwarren@iaacu.org.

Go to www.iaacu.org to see all the many services and financial tools that Farm Bureau members will find of value through the Farm Bureau member credit union.

GrainCoat, LLC is a streamlined, grain marketing solution that allows you to make decisions on-the-go while taking advantage of shifts in the market, regardless of location. \$20 discount on the \$199 platform. GrainCoat® Advantage - \$199/year. Annual subscription can be paid by check. Mail to: GrainCoat, LLC, PO Box 422, Waterloo, IL 62298

- Multiple Operations
 - Farm or Field Level Tracking
 - Additional Crop Types like Non-GMO, Wheat, etc.
 - Forecasted Projections
 - End of Year - Present or Future Inventory Valuation
 - Crop Share
 - Double Crop
 - Delivery Reports
 - Contract Reports
 - Updated Markets with CME Price Data
 - Mobile App for iPad
- Create an Advantage Account now!

Farm Bureau Remains Opposed to Proposed Progressive Income Tax

A cornerstone to Governor J.B. Pritzker’s budget plan is the implementation of the progressive income tax. The Pritzker tax is expected to generate an additional \$3.57 billion from individual taxpayers and \$350 million from a higher corporate tax annually for the state. For Pritzker and his allies to implement any change to the state’s income tax structure, the state’s constitution would need to be amended.

Farm Bureau Position

Farm Bureau policy supports a flat-rate state income tax. Policy is reviewed and discussed annually by farmer member delegates during numerous meetings, including the annual delegate session in December.

Farm Bureau feels that a progressive income tax like the Pritzker tax will make it easier for the state to target key economic sectors for higher taxes in the future. The continuing fiscal crisis facing the state budget will lead lawmakers to look for politically feasible options for raising tax revenue. Separate graduated income tax levels may lead to future tax increases.

Additionally, the Pritzker tax sends yet another message to potentially new or expanding businesses that Illinois is not a business-friendly state.

Background

Opportunities to amend the state’s constitution are very limited. One method is for the Illinois General Assembly to approve, by super majority, a Joint Constitutional Amendment.

Senate Joint Constitutional Amendment 1 (SJCA 1), sponsored by Senator Don Harmon of Oak Park proposes to amend the constitution to allow Illinois to implement any kind of a tax on income. The constitutional amendment does not specify a rate and it does not specify a graduated or non-graduated tax. Essentially SJCA 1 eliminates the state’s flat income tax protection, empowering lawmakers to pass additional income taxes on the same dollar earned. This change would allow for the nation’s highest tax on business income.

The change would have to be approved by voters during the election of 2020.

“We will continue to oppose the creation of a progressive income tax in Illinois,” said Illinois Farm Bureau® President Richard Guebert, Jr. “Our members have made it clear that a flat rate state income tax is the preferred way to assess an income tax. The passage of SJCA 1 and the companion tax rate bill moves Illinois one step closer to a progressive tax.”



Proposed Tax Changes

The existing state income tax system taxes individuals at 4.95 percent. The proposed Pritzker tax rates are provided below:

	Proposed tax rate	Existing tax rate
Tax return with net income up to \$9,999	4.75%	4.95%
Tax return with net income between \$10,000 and \$99,999	4.9%	4.95%
Tax return with net income between \$100,000 and \$249,000	4.95%	4.95%
Tax return with net income between \$250,000 and \$349,000	7.75%	4.95%
Tax return with net income between \$350,000 and \$749,999	7.85%	4.95%
Tax return with net income over \$750,000	7.99%	4.95%

The proposed language essentially allows the state to implement any kind or level of income taxes. Given Illinois’ continuing fiscal crisis, do you want the state to have access to your pocketbook?

Farm Bureau Urges Support for the U.S.-Mexico-Canada Trade Agreement

In May an agreement was reached to end tariffs on steel and aluminum imported from Canada and Mexico. Just prior to the announcement, Cook County Farm Bureau® sent the following letter supporting the USMCA trade agreement and U.S. closest neighbors, Canada and Mexico:

We, the undersigned organizations, representing all segments of the U.S. food value chain at the national, state and local levels, write to urge your strong support for immediate ratification of the U.S.-Mexico-Canada Agreement (USMCA). USMCA will benefit all aspects of the U.S. agriculture and food industry while providing consumers a more abundant supply of high-quality, safe food at affordable prices.

Over the last 27 years, U.S. food and agricultural exports to Canada and Mexico have more than quadrupled under NAFTA – growing from \$9 billion in 1993 to nearly \$40 billion in 2018. NAFTA has significantly helped create a reliable, high-quality supply of food products for U.S. consumers, while supporting more than 900,000 American jobs in food and agriculture and related sectors of the economy. USMCA builds on the success of the NAFTA agreement, and will ultimately lead to freer markets and fairer trade. This modernized trade agreement makes improvements to further enhance U.S. food and agricultural exports to our

neighbors and would deliver an additional \$2.2 billion in U.S. economic activity.

The International Trade Commission’s new report, the United States-Mexico-Canada Agreement: Likely Impact on the U.S. Economy and Specific Industry Sectors, confirms that the USMCA will improve market access for U.S. farmers, ranchers and food producers. The report states that USMCA would have “a positive impact on the U.S. agriculture sector.” Furthermore, it “would likely have a positive impact on all broad industry sectors within the U.S. economy”, raising U.S. GDP by \$68.2 billion. USMCA further strengthens U.S. food and agricultural trade by enhancing standards for biotechnology; reducing the use of trade distorting policies; establishing modern, science-based sanitary and phytosanitary standards; reinforcing disciplines for science-based SPS measures; improving grading standards and services; and facilitating the marketing of food and agricultural products. These advances help provide certainty in the North American market, which is essential to the success of American agriculture and retailers.

Given the significance of USMCA for the U.S. agriculture and food industry, we strongly urge that it be considered immediately, and we respectfully ask you to vote to ratify the agreement.

Manifolds, Manolos, and Manure



By Bona Heinsohn, CCFB Director of Gov. Affairs and Public Relations

Ten years ago, my blue-eyed girl quietly entered the world one hot Father’s Day. It was literally the last time she was quiet.

Although our blue-eyed girl has always been an excellent student, her desire to learn and her grades this school year have far exceeded our expectations. Her only complaint has been not getting all

A+s. Silly straight A’s, she wants straight A+s even in gifted reading and Spanish. Her interest in animals has only be dwarfed by her interest in earth science and Greek mythology. Even Harry Potter has been replaced on occasion by Percy Jackson and Annabeth Chase.

In the last year she’s grown taller than her Godmother. Unfortunately, she still runs like said Godmother. And that is not a compliment to either of

them. Unlike her Godmother who played keeper in soccer, my blue-eyed girl spends three seasons on the softball field. Her height and throwing arm lend itself to a lot of time on the left-hand side of the field. Her mother, on the other hand, spent her time behind the plate. Fortunately, she got my throwing arm and I got a volunteer coaching position.

Speaking of my blue-eyed girl, she makes my anxiety kick into high gear each and every time she and the big red beast fly around barrels or poles. It’s not the 15 plus hand big red beast that worries me, it’s her desire to go full speed all the time. The big red beast compensates when my blue-eyed girl gets off balance. He tolerates her when she’s not quite spot on with her cues. And he’s forgiving when her hands aren’t quite quiet or kind. His forgiveness runs a little thin unless he’s plied with copious amounts of treats.

What doesn’t give me heartburn or anxiety is her registered Holstein show calf, Red Carpet Lickey

Split-ET, or as I call her “Lickey the Demon.” My blue-eyed girl assumed that a calf she befriended shortly after its birth would remain docile after not seeing or interacting with her for months. Oh, was she wrong. The last time my blue-eyed girl captured Lickey the Demon, she needed my farmer to help her because Lickey went over a wall and through a gate in a daring attempt to escape. Fortunately, my farmer was not only able to capture her but was also able to get a halter on her. It’s a good thing that fair is still a couple of months away. If you’re in the area, be sure to check out Lickey the Demon in the Dairy Cattle Barn.

In the past year, we’ve watched in amazement as our little girl has become a young lady. But what hasn’t changed is our desire for her to want to milk the cows. Drive the tractors. Farm. Just like her dad, grandfather, and great grandfather before her.

Bona can be reached at bona@cookcfb.org.



Six Flags Great America in Gurnee, IL

Tickets bought directly from
Cook County Farm Bureau® are \$52.00**
 Tickets DO NOT INCLUDE Hurricane Harbor but are VALID for Fright Fest.
Online 1-Day General tickets are \$56.95

No Processing fee; a minimum of 2 tickets must be purchased through ilfb.abenity.com



Raging Waves, Yorkville, IL

1-Day General Admission Tickets: \$19.00 Ages 2 and under are FREE
 Tickets only available at the Cook County Farm Bureau office



Santa's Village, East Dundee, IL

1-Day: \$19.49 Ages 2 and under are free.

Tickets available at the Cook County Farm Bureau office and online to.

For pricing and to order tickets online for King's Island, Cedar Point and Other theme parks go to <https://ilfb.abenity.com/perks/>

To order tickets by phone call (708) 354-3276.



E-Ticketing Savings

Your Exclusive Link for Savings

drawbridge.medievaltimes.com/partner/CCFB

Discounted Tickets Starting at 25% Off*

(Save up to \$18 per person)

- Two-Hour Tournament • Four-Course Feast
- Magnificent Pure Spanish Horses • Authentic Sword Fights and Jousting

Program Benefits Include:

- No Processing Fees (Save an additional \$5 per ticket) • Year-Round Discounts • No Blackout Dates

*E-ticketing special prices are reflected when purchasing through your company e-ticketing account. Special prices cannot be combined with other discounts, offers or group rates. Not valid for prior purchases. Upgrades are additional.

Cook County Financial Representatives of the Month

The Financial Representative of the Month program is designed by Country Financial Agency Managers of Cook County to recognize overall Insurance Leaders in Life, Disability, Auto, Home, and Health production during the month. The agent earns the award through efforts to provide quality service to existing and new clients. Listed below are the various agents honored by their agency manager with the Financial Representative of the Month designation.



Ilir Numani

Chicago North Agency, Victoria Nygren, Agency Manager
 Ilir Numani has been named Career Financial Representative of the month for April 2019. His office is located at 6650 N. Northwest Hwy #200 in Chicago, IL. His phone number is 773-631-2909. Ilir has been a Financial Representative since April 2005



Margaret Rybska

Chicago North Agency, Victoria Nygren, Agency Manager
 Margaret Rybska has been named Employee Financial Representative of the month for April 2019. Her office is located at 1426 W. Fullerton Ave. in Chicago, IL. Her phone number is 773-628-2660. Margaret has been a Financial Representative since September 2017.



Yanni Zavakos

Chicago Northeast Agency, Sharon Stemke, Agency Manager
 Yanni Zavakos has been named Career Financial Representative of the month for April 2019. His office is located at 401 S. Milwaukee Ave., Ste 270 in Wheeling, IL. His phone number is 847-419-1352. Yanni has been a Career Financial Representative since March 2010.



Ibrahim Essa

Chicago Northeast Agency, Sharon Stemke, Agency Manager
 Ibrahim Essa has been named Employee Financial Representative of the month for March 2019. His office is located at 25 NW. Point Blvd., Ste. 850 in Elk Grove Village, IL. His phone number is 847-963-8851. Ibrahim has been a Financial Representative since January 2017.



Brett Riekema

Chicago Northwest Agency, Jack Smith, Agency Manager
 Brett Riekema has been named Career Financial Representative of the month for April 2019. His office is located at 23042 N. Main St., Prairie View, IL. His phone number is 847-415-2666. Brett has been a Financial Representative since May 2011.



Faustino Ramirez

Chicago Northwest Agency, Jack Smith, Agency Manager
 Faustino Ramirez has been named Employee Financial Representative of the month for April 2019. His office is located at 1515 E. Woodfield Rd., Suite 930 in Schaumburg, IL. His phone number is 847-891-3937. Faustino has been a Financial Representative since October 2017.



Alonzo Nevarez

Chicago South Agency
 Alonzo Nevarez has been named Chicago South Career Financial Representative of the month for April 2019. His office is located at 6239 S. Archer Ave., in Chicago, IL. His phone number is 773-284-5762. Alonzo has been a Career Financial Representative since June 2018



Edgar De Leon

Chicago South Agency
 Edgar De Leon has been named Chicago South Employee Financial Representative of the month for April 2019. His office is located at 6239 S. Archer Ave., in Chicago, IL. His phone number is 773-498-1184. Edgar has been a Financial Representative since November 2016.



Mike Skrabis

Orland Park Agency, Cary Tate, Agency Manager
 Mike Skrabis has been named Career Financial Representative of the Month for April 2019. His office is located at 9731 W. 165th St., Ste 36 in Orland Park, IL. His phone number is 708-226-1666. Mike has been a Financial Representative since March 1997.



Dan Gallivan

Orland Park Agency, Cary Tate, Agency Manager
 Dan Gallivan has been named Employee Financial Representative of the Month for April 2019. His office is located at 12130 S. Harlem Ave., Unit A in Palos Heights, IL. His phone is 708-381-4015. Dan has been a Financial Representative since January 2018.



Jim Verduin

South Holland Agency, Jeff Orman, Agency Manager
 Jim Verduin has been named Career Financial Representative of the Month for April 2019. His office is located at 17080 S Park Ave. in South Holland, IL. His phone number is 708-596-0008. Jim has been a Financial Representative since March 1982.



Mel Flowers

South Holland Agency, Jeff Orman, Agency Manager
 Mel Flowers has been named Employee Financial Representative of the Month for April 2019. His office is located at 4845 167th St., Unit 101 in Oak Forest, IL. His phone number is 708-560-9078. Mel has been a Financial Representative since September 2018.

Classifieds

All ads that we receive for The Co-Operator are also listed on our website at cookcfb.org/membership/classifieds. If you have a photo of the item(s) that you are selling you can email it to us to include it on our 'Classifieds' page on our website only along with your ad. Email your ad (and photo if you have one) to fbcooperator@gmail.com. Please be sure to include your full name, Farm Bureau number, and phone number. Deadline for Classified ads is the 17th of each month. Any ads submitted after the 17th will appear in the following month's Co-Operator. Members may run up to four non-commercial classified ads annually for free. Any ads submitted after the fourth, will be charged. If mailing your ad, please mail to: Cook County Farm Bureau, Attention: Classified Ads, 6438 Joliet Rd, Countryside, IL

60525. You can also fax your ad to 708-579-6056..

For Sale

USA made nostalgia 1911 popcorn machine with cart. \$450 excellent condition. Set includes 4oz. popper and cart. Great for parties & home theater. Awesome accent piece for living space. Call Sharon at 708-758-1909.

Variety of '65 Mustang parts, headlight buckets, hinges, ash-tray and much more. Call Cynthia at 708-602-2663.

2018 Hot tub never used! Seats 6 with lounger, 32 Jets, lights & waterfall. Only \$4475 with cover & delivery. Call Greg at 708-299-4640.

Courvoisier Erte collection limited edition unopened, Brand new power tools, high end Guns. Call Jim at 773-581-4400.

Vehicle

1976 M.G. Midget runs great no rust, new carb, gas tank and top. Moving to Florida garage kept. \$2900.00. Call Louis at 847-361-9292.

2002 Jaguar XKR 100 limited edition supercharged convertible every available option, with 16k on it. For details call Jim at 773-581-4400.

For Rent

Steger IL, for rent small 2bedroom apartment in 2unit building, refrigerator, stove, garbage & water included. No pets. Call Carmen at 708-259-7133.

Starting August 15, 2019 Two- 5bedroom houses for rent, near EIU Charleston, IL. Student rentals at \$275 each (\$1100) & 5 students at \$240 each (\$1200) will also take Family Rentals! For more information please contact Kim (manager) at 217-346-3583.

Wanted

Wanting to buy your electric trains and slot cars, turn those unwanted Trains and Slot Cars into cash! Call Ron at 630-272-4433.

Old balloon tire bikes, also 20" models, also old outboard motors no more than 7HP, and old toys. Call Jim at 708-361-8230.

Wanted full sized violins with/without cases and bows. Call Joyce at 708-354-3441.

Hiring

Melka Landscaping and Garden Center looking to hire in Mokena IL. Three positions available, Full, Part-time, or Internship. • Landscape Design & Sales • Garden Center Sales & Inventory management • Greenhouse Designer, Grower & Sales associate. For detail information visit our website at <http://www.jimmelkalandscaping.com/Resources/> or you can email all resumes to jmelkajr@jimmelka.com Office is located at 11606 179th St., Mokena IL 60448. PH:708-349-6989

This Month in Cook County Agriculture

Visit Cook County Farm Bureau® member Farm, Greenhouse & Garden Centers for all your planting needs this Spring! Their plantings, flowers, trees and shrubs are gorgeous and of the highest quality. For all your landscaping needs, skip the big box stores and patronize your fellow Farm Bureau member businesses this spring.

For a listing of Greenhouses and Garden Centers, please visit: <https://cookcfb.org/discover-local/farm-products-locator>. (Some provide member discounts as well!)



• Melka's Landscaping & Garden Center at 11606 179th St, Mokena, IL 60448 is hosting a fun and interactive children's program – Make a Butterfly Bowl on Saturday, June 1st at 10:30 AM. Children will create a planter that attract butterflies while learning all

about them! \$10.00 fee includes all materials and registration is required. Call the Garden Center at Melka's at 708-349-6989, ext 3.

• Whiskey Acres Distilling Co will host their first annual HomeGrown Music Festival on Sat, June 8th from 2-10:30 PM at 11504 Keslinger Rd, DeKalb, IL 60115. The festival is featuring the best local and regional musical talent, spirits, beer and food. Enjoy Whiskey Acres craft cocktails and craft beer, and nosh from a variety of food trucks. Show takes place on concert lawn adjacent to Whiskey Acres Distillery. All tickets are general Admission with lawn seating (bring lawn chair or blanket). All ages welcome. Rain or shine event. Tickets are \$29.00 and parking is \$10.00.

• The Illinois State Horticulture Society is hosting a Summer Horticulture Field Day on Thursday, June 13, from 8 AM to 4 PM, 2019 at Tanners Orchard, 740 State Route 40, Speer, Illinois (20 miles north of Peoria). The cost is \$27 per person in advance, \$35 on-site. To RSVP or for details and general information on the program, contact Jenna Spychal, Field Day coordinator, at 217-254-5258 or email Jenna@jonamacorchard.com

Let the FUN begin! 2019 Cook County 4-H Fair

• The University of Illinois Extension is seeking volunteers to assist as judges for 4-H projects and to help with activities for

the annual Cook County 4-H Fair scheduled July 20, 2019 at SeatGeek Stadium (formerly Toyota Park) in Bridgeview, Illinois. No prior judging experience or subject matter experience is required... just seeking caring individuals who would like to make a difference in a child's life. Contact Chanita Anderson, Program Coordinator, by phone at 708-449-4320 or email at chickma@illinois.edu

This article is for local farmstands, farmers' markets, chefs and restaurants, and organizations that are hosting farm-related activities, events, workshops, and gatherings that will occur soon.

To promote your activity, email membershipdebbie@cookcfb.org or call 708-354-3276 by the 15th of the month. Please include your name, the event date/time, a one- sentence description of the event, and how a reader can obtain further information in the email. We will edit submissions based on space allowances in the publication.

In addition, we will post farm, garden, or livestock related photos on our social media platform if you forward those to membershipdebbie@cookcfb.org.

Showtime on the Farm: Come on Down to Your Local Library

Agriculture in the Classroom is excited to invite you to visit your local library to participate in this summer's program, "It's Showtime" with an agriculture focus on FUN! Call library to register.

Stickney-Forest View	June 12	9:30-10:30AM
Evergreen Park	June 19	6:00-7:00PM
Hodgkins	July 9	10:00-11:00AM
North Riverside	July 11	2:00-3:00PM
Morton Grove	July 15	1:00-2:00PM
South Holland	July 16	2:30-3:30OPM
Palatine	July 22	11:00AM-12:00PM



Mark your Calendars!

FARM CRAWL

Saturday, September 14, 2019

Cook County Farm Bureau®
Passport to Agriculture
Farm Crawl

The Cook County Farm Bureau® is hosting its 3rd annual FARM CRAWL on **Saturday, September 14, 2019 10 am-4 pm**

The Farm Crawl is self-guided with no set schedules allowing members and the public flexibility to choose the farms and agri-businesses to visit during the Crawl times.

Full program details, as well as participating farms and business information will be available in the coming issues as well as on the Cook County Farm Bureau Events Calendar at www.cookcfb.org/Events. The Farm Crawl is an event all ages can enjoy. We hope to see you on the farm on Saturday, September 14th!

Recipe of the Month: Sweet & Savory Roasted Carrots

- 2 pounds thin/baby carrots peeled, chopped to 2 inches
- 2 T honey
- 1 T balsamic vinegar
- ¼ t ground mustard
- ¼ t cumin
- ¼ t pepper
- 2 T olive oil
- 1 t garlic powder
- ¼ t dried thyme
- ¼ t salt

Preheat oven to 375. Line a baking sheet with foil. Place carrots in a large bowl; in a small bowl, whisk together remaining ingredients and pour over carrots. Toss until evenly coated. Line carrots in a single layer on baking sheet. Bake for 30-45 minutes depending on carrot thickness, until fork tender, stirring after 20 minutes. Serves six.

Recipe reprinted with permission from members, Rick & Cathy Johnson, LaGrange, from our 2019 Cookfresh Recipe Collection Brochure, available online at www.cookcfb.org/discover-local/recipes.

To receive a copy of the 2019 Cookfresh Recipe Brochure, email: membershipdebbie@cookcfb.org or call 708-354-3276.

INCREASE FUEL EFFICIENCY

RESTORE HORSEPOWER

EXTEND ENGINE LIFE



708-532-4723

Dieselelex® Gold

Power • Efficiency • Protection

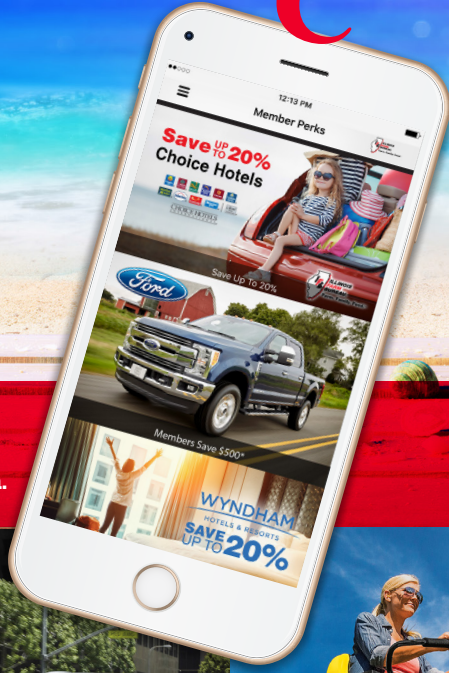
- Restores lost horsepower and fuel economy
- Starts engines faster and produces lower emissions
- Extends fuel pump and injector life

www.conservfs.com



©2018 GROWMARK, Inc. M102395

Summer savings



CHOICE HOTELS

Enjoy up to 20% off with Choice Hotels®
Advance reservations required
1-800-258-2847
IFB #00800614

WYNDHAM HOTELS & RESORTS

Enjoy up to 20% off "Best Available Rate" with Wyndham Hotels & Resorts
Advance reservations required
1-877-670-7088
IFB #8000002027



Download the app or sign up today at <https://ilfb.abenity.com>.

If you need assistance with obtaining your Cook County Farm Bureau® membership number, please contact us at (708) 354-3276.



Ford



Lincoln



John Deere



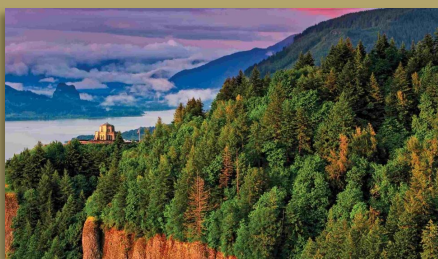
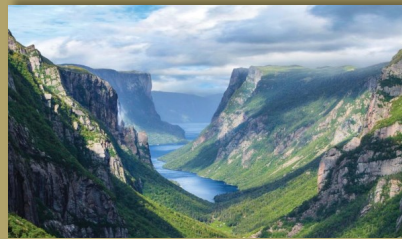
Theme Parks



Zoos



Great Wolf Lodge



Mayflower Cruises & Tours

2019-2020

Motorcoach, Rail & Cruise Holidays

US & Canada

Guided Holidays

To begin your Life Enriching Experience, learn more about Mayflower Tours and the **Exclusive Discount** Cook County Farm Bureau® members receive contact:

Mayflower Tours

Discount Code: ccfb16

- Ask for Kayla: 800-728-0724 ext. 201
- Direct: 630-435-8201 (9:30 am—6:00 pm)
- Email: kayla@mayflowertours.com
- Visit: www.mayflowertours.com

