



# Co-Operator

official publication of the Cook County Farm Bureau®

Celebrating 100 Years . . . Honoring Tradition—Leading The Future

**Mission:** To serve all members of the Cook County Farm Bureau® with meaningful and beneficial programs that reflect our Agricultural Heritage.

Vol. 93 No. 11

Countryside, IL 60525

[www.cookcfb.org](http://www.cookcfb.org)

November 2019

## Mark Your Calendar

### NOVEMBER - MID DECEMBER

CCFB Young Leaders Winter Coat Drive pg. 12

### NOVEMBER

14 Oil Essential Class pg. 12

19 Build a Holiday Centerpiece pg. 12

19 Webinar for Farmers & Agricultural Business pg. 12

23 Winter Holiday Planter Workshop pg. 12

Centennial Patio Paver Pg. 5

### HOLD THE DATE!

100 Year Anniversary Celebration Open House

Saturday, March 28, 2020 • 9 AM to Noon

CCFB Building

6438 Joliet Road, Countryside IL.

For participation details on these programs and activities, check out the related information in this publication, go to [www.cookcfb.org](http://www.cookcfb.org), or contact the office at 708-354-3276.

You can register for most programs using the Member Service Center at [www.cookcfb.org](http://www.cookcfb.org).



The members and guests that attended this year's Giant Pumpkin contest and related events gathered for a "Class Photo" and shot a video wishing Cook County Farm Bureau a 100 Year happy birthday. The event was filled with creativity, great pumpkin desserts & honey and some very big pumpkins. See page 10 for more photos and results.

## Question of the Month

The Cook County Farm Bureau recently received National recognition (County Activity of Excellence) from the American Farm Bureau Federation for what new program?

☆Bonus☆:

What page of this publication is CCFB mascot Corny Calvin "hanging out" on this month?

Call the Farm Bureau at 708-354-3276, fax your answer to 708-579-6056 or email to [fbcooperator@gmail.com](mailto:fbcooperator@gmail.com) to enter the drawing for a \$25 gas card. **(Please include Name, FB# and phone number)**

October's winner is  
**Orely O. Betcher**

What month and day will the 2019 Master Gardner Helpdesk/ Resource Center shut down for the season?

Answer: November 14

## Who We Are...

Cook County Farm Bureau® is made up of many members including farmers, landowners, foodies, greenhouse operators, specialty growers, food consumers and customers of the Farm Bureau's affiliated companies (Country Financial, Conserv FS, IAA Credit Union, etc.). We bring together many members with diverse backgrounds and food interests to support the success of local farmers and to keep agriculture present and strong in Cook County. This Co-Operator publication is designed for members to share more about how Cook County Farm Bureau is working for local farmers and agriculture and to help our members know more about farming, food, fiber and bio-fuels as well as great membership deals, savings, discounts, benefits, programming and activities. Thank you for your support of area agriculture and your membership!

## Farm Shadows Program to focus on Agricultural Career Exploration



Our new farm shadow program is a wonderful opportunity for our future workforce to gain valuable insight into potential agriculture careers. Through partnerships with our members farming or working in careers in agriculture, we hope to provide students with an understanding of how their school coursework connects to the myriad jobs in our industry so they will come away with a better understanding of the skills needed to be successful. We want our area's enthusiastic, bright minds to be exposed to agricultural careers through this program.

We are seeking agricultural business partners that want to help mentor young leaders in a variety of ways such as:

- Offering job shadow opportunities at your business/farm
- Opening your business or farm for one of our Ag Career Exploration events (we will work with school and you to facilitate the experience)

Continued on page 11

## Professional Members receive "How are we doing?" Survey

Several years ago, the Illinois Farm Bureau created a new voting membership class to serve individuals that work in the agricultural sector but do not farm. This "Professional Member (PM)" classification is growing across the state including within the Cook County Farm Bureau. On October 21, the Illinois Farm Bureau emailed PM members a survey as the organization continues to seek ways to better involve and to better serve members.

Our goal with the survey is to have a better idea what Professional Members are wanting from their membership and to understand more about how we should be communicating with them. For those that we do not have industry and/or occupation we hope that they will complete this part of the survey and we can populate that in the organization's database.

The survey will be finalized/closed on November 15, 2019. If you are a PM member in the Cook County Farm Bureau and did not receive a survey or if you are interested in becoming a PM member, please let us know by contacting the office at 708-354-3276.

# What's Up?

From our Farm Bureau members that are regular office visitors, we asked:  
 "What farm-produced food do you most look forward to enjoying at Thanksgiving and why?"



Charles E. Martin  
 "Green bean casserole and pumpkin—basically it's a seasonal taste. 'Tis the Season'."



Janice Konow  
 "Sweet potatoes, parsnips, beets, squash—we like our veggies fresh and new."



Roger Head  
 Sweet potato, because I enjoy cooking sweet potato pie."



Michael O'Brien  
 "Besides turkey, it's all the produce I grow and prepare: cranberry sauce, apple sauce, peach/pear cobbler pies, salsas, etc."

## 100 Years of Cook County Farm Bureau!



and the Farm Bureau's growth over the past 100 years.

We are asking members to check your attics, closets, bookshelves and basement storage areas for items that can help us chronicle agricultural and Farm Bureau history in Cook County. We also welcome any affiliated company history such as Lake-Cook Farm Service Supply, Country Companies, etc.

Items may include photographs, member signs, clothing, newspapers, lapel pins, old "give-a-way" promotional items, documents, and other keep sakes.

If there is a story behind the item, please share that with us as well. We will be pleased to credit you and your family. Items can be provided on loan or donated.

We hope to be able to partially recreate the evolution of Agriculture and the Cook County Farm Bureau through the power of memory items!

Please contact the Cook County Farm Bureau at 708-354-3276 or visit [www.cookcfb.org](http://www.cookcfb.org) for more information.

On March 28, 2020, Cook County Farm Bureau will be holding an open house for members and the public to come together to celebrate the 100 year birthday of Cook County Farm Bureau.

As a part of that event and for several weeks following, the planning committee would like to create historical displays for public viewing made up of memorabilia and artifacts that can help tell the story of agriculture's evolution

## Hello Ciao Guten Tag Hola Bonjour Tere Olá Shalom

### Translate to other Languages

We are very fortunate to have members that come from various backgrounds and countries. While we publish this publication in English, the Google Translate App can convert the publication text through your smart phone screen into Spanish, French, Polish, Russian, Chinese, Arabic and a host of other languages. Check it out. Enjoy and happy reading!

## Cześć Aloha Zdravo Salam Dobry den Hei God Dag Alo



## Gratitude Journal

Each month, there are people that go out of their way to lend a hand to help with our cause in many ways, big and small. We appreciate it greatly!

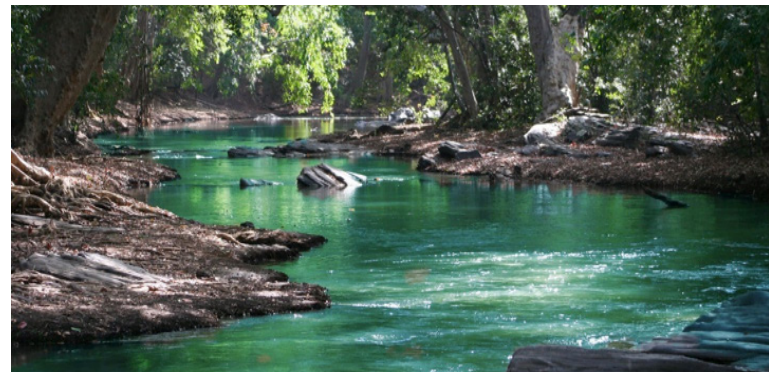
### The Cook County Farm Bureau thanks...

- Member, Joe Miller for donating pumpkin vines and corn stalks to our Ag in the Classroom Program for sharing with a local CPS classroom and fall teacher workshop.
- The members that come into the office to say hello on a regular basis and for having fun with the "What's Up" feature this month (Charles E. Martin, Roger Head, Janice Konow, Michael O'Brien)!
- Doug Yunker for making a great introductory video for the Young Leaders Group that is going to the Bedford Park 3rd grade classroom which the group adopted this year.
- The many members and guests that came out to Puckerville Farm on October 5 to participate in and enjoy this year's giant pumpkin contest, honey contest, pumpkin dessert contest, pumpkin carving contest and pumpkin decorating contest for kids.
- Our many members that understood why we had to cancel the Member Appreciation Picnic at Odyssey Fun Farm due to the torrential rains that fell the day and night before the event, flooding the facility.
- Kristen Yunker for shooting a Facebook video that provides a glimpse into why she thinks it's important to belong to the Young Leaders Group and to get involved in agriculture in some way.
- Our members that submitted photo's for our photo contest... the judging is underway!

## Water Fun Facts!

- On average, the 48 continental United States receive enough precipitation in one year to cover the land to a depth of 30 inches.
- One part of the water cycle that is obviously essential to all life on Earth is the freshwater existing on the land surface.
- The land area from which surface runoff drains into a stream channel, lake, reservoir or other body of water is called a watershed.
- Most of the world's water (97%) is in oceans and is too salty to use.
- Farmers plant buffer strips to reduce the amount of pollutants that enter nearby water.
- The definition of freshwater is water containing less than 1,000 milligrams per liter of dissolved solids, most often salt.
- The water cycle describes the existence and movement of water on, in, and above the Earth.
- Precipitation is water released from clouds in the form of rain, freezing rain, sleet, snow, or hail.
- The common raindrop is actually shaped more like a hamburger bun.
- Evaporation is the process by which water changes from liquid to a gas or vapor.
- Water freezes at 32 degrees Fahrenheit (0°C) and boils at 212 degrees Fahrenheit (100°C).
- "Aquifer" is another name for a groundwater storage area.
- A spring is the result of an aquifer being filled to the point that the water overflows onto the land surface.
- The average person uses 2 gallons of water while brushing their teeth!
- What do your brain and a tree have in common? Both are three quarters water.

From the *Illinois Agriculture in the Classroom<sup>SM</sup> Calendar for Teachers*



## Co-Operator

published monthly  
 Cook County Farm Bureau  
 6438 Joliet Road, Countryside, IL 60525  
 (ph) 708-354-3276 (fax) 708-579-6056  
 (e-mail) [ccfb@cookcfb.org](mailto:ccfb@cookcfb.org) (website) [www.cookcfb.org](http://www.cookcfb.org)  
 USPS No 132180 Periodical Postage Paid at LaGrange, IL 60525 & additional mailing office

|               |                     |                         |
|---------------|---------------------|-------------------------|
| <b>Editor</b> | <b>Copy Analyst</b> | <b>Copy Development</b> |
| Bob Rohrer    | Ashley Christensen  | CCFB Office Staff       |

**Officers & Directors**  
 Janet McCabe, President  
 Michael Rauch, Vice President  
 Ruth Zeldenrust, Secretary-Treasurer

|               |                   |                |
|---------------|-------------------|----------------|
| Dan Biernacki | James Bloomstrand | Roger Freeman  |
| James Gutzmer | Patrick Horcher   | Gerald Kopping |
| Todd Price    | Tim Stuenkel      | Mark Yunker    |

**Farm Bureau Manager**  
 Bob Rohrer

**Office Staff**

|                |               |               |
|----------------|---------------|---------------|
| Jill Drover    | Bob Heine     | Bona Heinsohn |
| Kelli McSherry | Diane Merrion | Juanita Ramos |
| Melanie Senne  | Katie Smith   | Debbie Voltz  |

**Affiliated Companies**  
 Jeff Orman ..... Insurance Agency Manager, South Holland  
 Victoria Nygren..... Insurance Agency Manager, Chicago North  
 Jeff Maxson ..... Insurance Agency Manager, Chicago South  
 Jack Smith ..... Insurance Agency Manager, Chicago Northwest  
 Sharon Stemke ... Insurance Agency Manager, Chicago Northeast  
 Cary Tate ..... Insurance Agency Manager, Orland Park  
 John Tuttle ..... General Manager, Conserve FS  
 Postmaster - Mail Form 3579 to 6438 Joliet Road, Countryside, IL 60525  
 "Co-Operator" (USPS No 132180) is published monthly as a membership publication for \$2.50 per year to members as a part of their annual membership dues by Cook County Farm Bureau, 6438 Joliet Road, Countryside, IL 60525. Periodical postage paid at LaGrange, IL and additional mailing office. Postmaster: send address changes to the Co-Operator, 6438 Joliet Road, Countryside, IL 60525.

The "Co-Operator", the monthly publication of the Cook County Farm Bureau®, is available to members through mail delivery, email, or by viewing online at [www.cookcfb.org](http://www.cookcfb.org). Members that wish to receive the publication solely by email can let us know by sending an email to [juanita@cookcfb.org](mailto:juanita@cookcfb.org) with the subject: E-Cooperator.



# Downwind

by Bob Rohrer, CCFB Manager

## Creating A Hamburger Is An Art Form

We had a family dinner the other evening in Oak Brook. My wife asked me what I was thinking about ordering and I replied with a straight face “an Impossible Burger” and the entire table burst out laughing. They know me. My son and his girlfriend rave about the new plant burgers and how much these fake meat burgers tastes like a real hamburger. Hmm... I can't be objective because I do not plan on subjecting my taste buds to the fake stuff.

I believe that creating a hamburger is an art form. This art does not begin with pea protein isolate, textured wheat protein, cellulose from bamboo or refined coconut oil (all good farm products, but not for my burger).

My art form takes approximately 18 months (yes, one and a half years) to create. Mother nature, during those 18 months, creates perfect beef through consumption of high-quality corn, grasses, nutrients, minerals and good water. The butcher refines the art into 80/20 ground beef.

“The Hungry Rembrandt” (my code name) purchases 2 pounds of fresh art, ground beef and prepares a hot grill. I very loosely form the art into four half pound patties. (I'm not one of those persons that wads the meat into a ball, slapping it around until finally forming it into a hockey puck. I want that patty to “want to fall apart” as it is seared at high temperature). Over the flames, following one flip, the burger reaches a condition I call “perfect”. I liberally apply slices of sharp cheddar to melt and fold over the entire masterpiece.

During that final minute of grilling, I toast dairy buttered, gluten-full buns to a golden brown. Depending upon my emotional state at the time, I may apply a light helping of ketchup, mustard, or steak sauce. My wife's homemade dill slices are at the ready. If in a sassy mood, I grill onions or mushrooms for added complex flavor. And, of course, I love bacon on my burger ( thank you hog farmers). It is extremely fortunate that I spend time in the garden during the summer and have a plump and juicy, thinly sliced tomato at the ready.

The massive treasure approaches my mouth and I wish that my cheeks could stretch further...Wow, food art!

In recent months, there has been a lot of media coverage about the Incredible Burger, the Awesome Burger, the Impossible Burger, the Beyond Meat Burger and more. Each is seeking to mimic the real thing. I looked at the ingredient list at a few of these fake meat products and my real beef burger sounds tastier. I compared the nutrition tables of plant-based burgers and a beef burger is similar. I read the argument that plant based burgers are better for the environment because land used to raise beef could be used for crops. This is simply wishful thinking with much of the land used for beef production unable to sustain crop production due to poor, rocky soils and lack of water.

Recently, some presidential candidates have alluded to eliminating beef burgers to help save the planet. I hope their next step is not to call for registering and doing background checks on my burgers. They will have to pry my burger from my dead hands!

All of these plant burgers have a name. Mooooove over for my burger... the “Ultimate Sensory Pleasure Burger.”

\*\*\*

Time marches on... This month, we are looking at the archives from the year 2000 through 2009 as we draw ever closer to the 100-year birthday of the Cook County Farm Bureau in March of 2020. I remember that decade as extremely busy and full of change as the organization grew in terms of membership, membership service, membership programming, public relations activities, creation of a PAC, increased volunteer involvement, website development and modernization.

Check out the “time warp” below which captures just a bit of the action! Also, we've begun sharing these materials as well as classic photos, video well wishes from members and sneak peaks of our celebration on the website, Facebook, Instagram and other social media...please check it out. You will want to “purchase” a brick for our legacy patio that we are building to leave your mark on the 100-year occasion into perpetuity.

Bob can be reached at [brohrer@cookcfb.org](mailto:brohrer@cookcfb.org).

## CCFB History: 2000-2009

### 2000

- The early twenty-first century included years of tremendous membership growth, especially in associate members.
- Farm Bureau awards \$2,000 in scholarships for students pursuing an agricultural degree.
- Howard Paarlberg retires as President of the Cook County Farm Bureau® after 16 years of service as President. Under his leadership, Farm Bureau launched the roadside vegetable marketing service, Agriculture in the Classroom program, created the CCFB Foundation® and chaired the Farm Bureau's 75th anniversary celebration.
- “The Farm” at the Museum of Science & Industry opens in Chicago.

### 2001

- Farm Bureau launches Food Checkout Day and a partnership with Ronald McDonald House Charities of Chicagoland and Northwest Indiana® to support families calling the Chicagoland houses their temporary “home” while their child is receiving treatment.



- The Giant Pumpkin Contest is established with a winning pumpkin maxing out the scale at 186.75 pounds!
- Farm Bureau creates a “Landowners Group” to assist agricultural property owners.
- Farm Bureau names Kim Morton as the first Northeast Legislative Coordinator. This position provided additional focus and resources in the area of northeastern Illinois legislative relations.

### 2002

- Cook County Farm Bureau places first in total percentage membership gain in Illinois (110.88%).
- The Cook County Farm Bureau website launches and provides members with an additional source of news, information, and benefit access.
- Former Illinois Senator Debbie Halvorson and Illinois Rep. Cynthia Soto were named “Legislator of the Year” for their outstanding voting records and efforts on pertinent agricultural issues.



Kim Morton presents Friend of Ag to Illinois Senator Barack Obama

- Renee Stranski joins the Farm Bureau team as the first summer intern.
- The Agriculture in the Classroom program expands into Chicago Public Schools fourth grade classrooms.

### 2003

- The Board of Directors approves the creation of the Public Relations Committee. In 2005, the committee integrated into the Agricultural Literacy Committee until 2013 when it became a standalone committee.
- Thanks to a net gain of 3,337 members during the 2002-2003 membership year, the Cook County Farm Bureau reached an all-time high for total members. The net gain was the highest member gain in the state.

### 2004

- Farm Bureau places second in total percentage membership gain in Illinois (114.62%).
- Ray Nykaza retires as Cook County Farm Bureau President. He is succeeded by Harry Stuenkel.
- Kathy Lesser, a current Agriculture in the Classroom presenter for Cook County Farm Bureau, is named “National AITC Teacher of the Year” in recognition of her efforts to integrate agriculture into her classroom.
- Farm Bureau names former Illinois Senator Wendell Jones “Legislator of the Year” for his efforts on agricultural issues and outstanding voting records on pertinent issues.
- Farm Bureau joins Wagner Farm in Glenview for the Dairy Breakfast, an event still enjoyed by Farm Bureau families and urban consumers.
- Agriculture in the Classroom reaches over 20,515 students during in-classroom presentations.
- Former Farm Bureau President Jim Goebbert retires from the Board of Directors after 30 years on the Board.

### 2005

- Farm Bureau transitions to a new committee structure to streamline volunteer involvement and time.
- The Co-Operator transitions from an eight-page black and white publication to a twelve-page full color publication.
- Happy 85th birthday Cook County Farm Bureau!

### 2006

- Glenview's Wagner Farm, a frequent CCFB partner in ag literacy, opens its “Heritage Center” to educate the general public about agriculture.



Glenview Country Insurance agents enthusiastically volunteered at the Wagner Farm Dairy Breakfast on Saturday, July 18th. Mike Gross, Agency Manager (1) along with Bob Sitkiewicz and Mike Salerno helped out with the activities that Cook County Farm Bureau provided for the attendees of the farm breakfast. Also pictured is Jim Bloomstrand, Ag in the Classroom presenter.

- Illinois State Senator Susan Garrett is named “Legislator of the Year” by the Cook County Farm Bureau for her leadership on legislation to revise Illinois' eminent domain statute.

### 2007

- Farm Bureau's affiliated company, COUNTRY® Financial enters into the insurance and financial services market in the City of Chicago.
- Farm Bureau launches its first annual Family Celebration Picnic at the Children's Farm at the Center in Palos Park.

### 2008

- Cook County Farm Bureau again places first in total percentage membership gain in Illinois (103.72%).
- Annette Schaeffer, a teacher of over 40 years, is named a finalist for Illinois Agriculture in the Classroom Teacher of the Year.
- Farm Bureau approves an organic and food labeling policy drafted by Cook County Farm Bureau.

### 2009

- Cook County Farm Bureau joins Facebook! The page now boasts over 6,400 fans.
- The E-Cooperator publication launches saving members time and saving the environment!
- Cook County Farm Bureau Political Action Committee (Cook CFB PAC) is created to endorse candidates favorable of Farm Bureau policies and positions.
- The Board of Directors overwhelmingly approve a local resolution to reduce the number of votes needed to override a Presidential veto in Cook County to a three-fifths rather than a four-fifths majority.
- Local Farm Products website is created to serve consumers interested in finding local farm products, farm stands, greenhouses, etc. The website is now fully integrated into Cook County Farm Bureau's website [cookcfb.org](http://cookcfb.org).



On February 18, 2009 the Cook County Farm Bureau and Ronald McDonald House Charities®-Chicagoland and Northwest Indiana (RMHC®-CNI) celebrated Food Check-Out Week with a shopping spree and other events. Pictured from left to right: Captain Cornelius (Tim Stuenkel), CEO of (RMHC®-CNI) Doug Porter, President of Cook County Farm Bureau Jim Brandau, and Ronald McDonald. Please see the Ag Literacy Page (page 6) for more of the day's events.

## Nationally Recognized Cook County Farm Bureau Program Donates \$3,500 to Local Food Pantries

This summer, Farm Bureau launched the “Food Pantry Challenge” to engage consumers and provide financial donations to local food pantries.

In this first year, the program enabled Cook County Farm Bureau leaders to engage with over 118,000 urban consumers in conversations about the healthy and nutritious food local farmers grow while financially supporting

14 non-profit food pantries. **The program was named a County Activity of Excellence (CAE) winner by the American Farm Bureau Federation® (AFBF).** Cook CFB will participate in the Farm Bureau CAE Showcase at the 2020 AFBF Annual Convention and Trade Show in Austin, Texas.

AFBF received over 100 entries across all membership categories.

### Recipe of the Month: *Fresh Tomato Soup*

**Janet McCabe, CCFB President & Farmer**

- 1 c chopped celery
- ½ c green pepper, chopped
- 1 small onion, grated
- ½ lb carrots, grated
- ¼ c butter
- 4½ c chicken broth
- 1 qt tomatoes, peeled and chopped
- 1 t salt
- ¼ t pepper
- ¼ c flour

Mix together: ground beef, breadcrumbs, salt, onion, tomato soup and rice in a large mixing bowl. Stand peppers upright in baking dish. Fill peppers with meat mixture. Add remaining mixture around peppers and cover with ketchup. Bake at 350° for 1 hour. Uncover for last 15 minutes.

Recipes reprinted with member's permission from our 2019 Cookfresh Recipe Collection Brochure, available online at [www.cookcfb.org/discover-local/recipes](http://www.cookcfb.org/discover-local/recipes).

To receive a copy of the 2019 Cookfresh Recipe Brochure, email: [membershipdebbie@cookcfb.org](mailto:membershipdebbie@cookcfb.org) or call 708-354-3276.

## TEAM RECRUITMENT

Signup begins for 2019-21 CCFB Action teams/Volunteer Opportunities. The CCFB has 5 teams made up of excited members with an interest in a strong farming presence in Cook County and a quality Farm Bureau Organization. We are always seeking individuals with a passion for farming and Farm Bureau who wish to give time, energy and enthusiasm locally.

### TEAMS

#### COMMODITIES/MARKETING TEAM

**PRIMARY PURPOSE**  
To help Farmer Members succeed financially in Cook County.

**PRIMARY AUDIENCE**  
Farmers (Current and Prospective)

#### PUBLIC POLICY TEAM

**PRIMARY PURPOSE**  
The need to engage and influence elected local, state and national officials.

**PRIMARY AUDIENCE**  
All Members (A, MM & PM)

#### MEMBER RELATIONS TEAM

**PRIMARY PURPOSE**  
To recruit and retain Members through an increase in membership benefits/services.

**PRIMARY AUDIENCE**  
All Members (A, MM & PM)

#### PUBLIC RELATIONS TEAM

**PRIMARY PURPOSE**  
To improve the image of farmers through public outreach activities.

**PRIMARY AUDIENCE**  
Primary purchasers of household food, products/general public

#### AG LITERACY TEAM

**PRIMARY PURPOSE**  
To teach primary and middle school students and teachers about farmers and agriculture.

**PRIMARY AUDIENCE**  
Primary school (K-5th) students/teachers  
Middle school (6th-8th) students/teachers  
High school (9th-12th) students/teachers



EACH TEAM MEETS A MINIMUM OF 4 TIMES ANNUALLY (SEE SCHEDULED TIMES AND DATES BELOW) TO DEVELOP PLANS AND ACTIVITIES TO FULFILL ITS PURPOSE. WE HAVE OPPORTUNITIES FOR VOLUNTEERS WHO WISH TO SERVE 'AS NEEDED' AND IN OUR LEGISLATIVE CONTACT GROUP, FBACT. IF INTERESTED, PLEASE GO TO: [COOKCFB.ORG](http://COOKCFB.ORG). WHAT A GREAT WAY TO MAKE GREAT CONNECTIONS AND SERVE AGRICULTURE!

#### Upcoming Meeting Dates/Times\*:

- Weds, Dec. 11th • Dinner 5:30 pm, Meeting 6-7:45 pm
  - Weds, Feb. 12th • Dinner 5:30 pm, Meeting 6-7:45 pm
  - Weds, Apr. 8th • Dinner 5:30 pm, Meeting 6-7:45 pm
  - Weds, Aug. 12th • Dinner 5:30 pm, Meeting 6-7:45 pm
- \*The Public Relations Team meets from 4:30-5:30pm prior to dinner.

Meetings are held at the Cook County Farm Bureau located at 6438 Joliet Rd. in Countryside. We are also working on Skype options for attendance.

**\*\*Membership recruitment and retention is an aspect of each Team.**



Jeff Orman, Country Financial Agency Manager, South Holland

## “From the Country” Snuff Out Danger from Seasonal Fires

A turkey's roasting in the oven, the stovetop's full with all the fixings. The table is set with fine silver and beautifully burning candles.

To many, it's the ideal holiday scene.

To fire prevention experts, it's a scene that could go terribly wrong within a matter of seconds.

To find out just how quickly your home could go up in smoke, COUNTRY Financial teamed with firefighters to demonstrate common winter season fires.

We tested what might happen if an unattended candle fell onto flammable materials. The entire room was consumed by fire within 3 minutes. Our test with a space heater fire engulfed a room in less than 4 minutes.

Fire damage is costly. National Fire Protection Association statistics show space heater fires cause \$608 million in damage and candle fires cause \$370 million worth of damage to homes each year.

With all the dangers lurking behind the beauty and warmth of the typical holiday scene, it's not surprising that late fall/early winter is the peak season for home fires.

I encourage you to follow these tips to help secure your home from fire:

#### Candles

1. Never leave burning candles unattended.
2. Keep lit candles away from children and pets.
3. Keep wicks trimmed to ¼ inch.
4. Always burn candles in or on holders placed on a level, heat resistant surface.
5. Keep candles away from flammable items.
6. Never let candles burn for more than 4 hours at one time.

#### Space Heaters

7. Select a space heater with a guard around the flame areas of the heating element.
8. Choose a heater that has been certified by a nationally recognized testing laboratory such as Underwriters Laboratories (UL).
9. Make sure the heater has an automatic tip switch, a device that turns off electric or kerosene heaters if they tip over.
10. Place heaters on a level, hard, nonflammable surface - do not place on rugs, carpets, tables or countertops.
11. Keep the heater at least 3 feet from bedding, drapes, furniture or other flammable items.
12. Turn off the space heater when you leave the area, and never leave a space heater on while sleeping or if you leave home.

So, before your thoughts turn to the delights of holiday treats, Thanksgiving eats and sweets of the season, take some time to make sure your family and home are protected from the dangers of home fires.

See me for a Home Safety Checklist. Go into this season with the peace of mind that your home and family will be protected for many years to come.

Jeff can be reached at [Jeff.orman@countryfinancial.com](mailto:Jeff.orman@countryfinancial.com)



## Your South Holland Agency



Jeff Orman  
Agency Manager  
708-560-7777



Andrew Carrell  
South Holland  
708-596-3999



Jim Verduin  
South Holland  
708-596-0008



Randall Cox  
Flossmoor  
708-679-1870



Elliot Day  
Flossmoor  
708-679-1870



Gary Molenhouse  
Matteson  
708-679-1870



Josh Van Namen  
Worth  
708-361-3925



Jim Pathemore  
Orland Park  
708-745-5151



Tim Perchinski  
Steger  
708-754-7300



Bob Smith  
Homewood  
708-798-4844



Paul Turay  
Mokena  
708-478-0423



John VanGennep  
Mokena  
708-478-5500



Bob Deenik  
Lansing  
708-474-5600



Tim Van Zuidam  
St. John, IN  
219-365-1781



Mike Cerf  
Oak Forest  
708-560-7777



Charmaine Toney-Adkins  
Oak Forest  
708-381-4010



Grace Cordero  
Oak Forest  
708-381-4011



John Tymmm  
Worth  
708-480-5091

Helping you protect what matters most

# Centennial Legacy Patio to be Created to Benefit Foundation

Creating a legacy to mark the Centennial celebration of the Cook County Farm Bureau, the Farm Bureau and Foundation are partnering to create a Commemorative Patio on the grounds of the Cook County Farm Bureau. The Commemorative Patio will be close to the east entrance of the Farm Bureau building and will feature personalized memory pavers, two park benches, a wrought iron fence, and flower boxes.

Members and Farm Bureau/Foundation supporters and partners can support the project by purchasing

a paver that will be incorporated into the patio. The paver can include the member or family name, encouragement, recognition, and other well wishes.

Three sizes of paver are available and proceeds from the sale of the pavers go directly to the Cook County Farm Bureau Foundation's efforts to improve and enhance agricultural literacy in Cook County. Donation for the pavers are fully deductible per IRS guidelines. Use the order form below or go to [cookcfb.org/foundation](http://cookcfb.org/foundation) to donate.



The future site of the Cook County Farm Bureau Centennial Legacy Patio is near the east entrance of the Farm Bureau building.



The Centennial Legacy Patio will be paved with personalized brick pavers, available in three sizes.



## COOK COUNTY FARM BUREAU FOUNDATION BRICK ORDER FORM

"Building a commemorative legacy patio in honor of the first 100 years of CCFB service to members"

**4X8** Line 1 \_\_\_\_\_  
 Line 2 \_\_\_\_\_  
 Line 3 \_\_\_\_\_

**8X8** Line 1 \_\_\_\_\_  
 Line 2 \_\_\_\_\_  
 Line 3 \_\_\_\_\_  
 Line 4 \_\_\_\_\_  
 Line 5 \_\_\_\_\_  
 Line 6 \_\_\_\_\_

**8X16 / Bench** Line 1 \_\_\_\_\_  
 Line 2 \_\_\_\_\_  
 Line 3 \_\_\_\_\_  
 Line 4 \_\_\_\_\_  
 Line 5 \_\_\_\_\_  
 Line 6 \_\_\_\_\_

NAME \_\_\_\_\_  
 ADDRESS \_\_\_\_\_ CITY \_\_\_\_\_ ZIP CODE \_\_\_\_\_  
 EMAIL ADDRESS \_\_\_\_\_  
 CREDIT CARD# \_\_\_\_\_ EXP \_\_\_\_\_ SECURITY CODE \_\_\_\_\_

MAKE CHECKS PAYABLE TO CCFB FOUNDATION AND MAIL TO:

KATIE SMITH - DIR. OF MEMBERSHIP & ADMINISTRATION COOK COUNTY FARM BUREAU

6438 JOLIET RD., COUNTRYSIDE, IL 60525

\_\_\_\_ 4X8 BRICK - 3 LINES - 13 CHARACTERS PER LINE @ \$75.00 PER BRICK  
 \_\_\_\_ 8X8 BRICK - 6 LINES - 13 CHARACTERS PER LINE @ \$150.00 PER BRICK  
 \_\_\_\_ 8X16 BRICK - 6 LINES - 26 CHARACTERS PER LINE @ \$300.00 PER BRICK  
 \_\_\_\_ 6 FT BENCH - 6 LINES - 26 CHARACTERS \$600.00

PLEASE PRINT IN CAPITAL LETTERS AND CHECK FOR SPELLING ACCURACY.  
 PUNCTUATIONS AND SPACES COUNT AS CHARACTERS.

### Sample messages for bricks

(Followed by individual or family name, dates, etc)...

*In appreciation...*  
*In memory of...*  
*Best wishes...*  
*Many blessings or much gratitude*  
*Have another great century*  
*Side-by-side*  
*Thanks for all that you have done for our farm (or family)*  
*We celebrate 100 years of service*  
*Happy 100-year birthday*  
*Looking good, CCFB!*

*Thank you for providing a century of leadership*  
*A great century of service*  
*This local family farm appreciates you*  
*Thanks for being a great partner*  
*Proud member for XX years*  
*Our farm story has just begun*  
*Celebrating the past*  
*Looking forward to a bright future*  
*This is just the beginning*

# Stump the Staff!



Every day, the Cook County Farm Bureau office fields many phone calls and provides information and answers to a variety of questions. This feature is designed to highlight some of the questions that we frequently receive...

**Q.** Does the Farm Bureau have discounts for Home Run Inn Pizza?

**A.** Yes, the Farm Bureau offers a 20% discount on gift cards; we have \$25 cards selling for \$20 and \$10 cards that sell for \$8. Call the Farm Bureau to make your purchase today 708-354-3276.

## Want a free movie ticket?



Encourage your family, friends and neighbors to join the Cook County Farm Bureau as an associate, farmer or professional member. If they join, you will receive a free movie ticket! Call our office at 708-354-3276 to let us know that you referred a member.

Individuals can join the Cook County Farm Bureau by going to [www.cookcfb.org](http://www.cookcfb.org) and clicking on MEMBER CENTER.

Affiliated Country Financial reps or Staff members do not qualify. Valid only 6/1/2019 through 12/31/19.



## Your Chicago South Agency

6438 Joliet Road | Countryside, IL 60525 | 708-352-5555



**Jeff Maxson**  
708-352-5555  
Agency Manager



**Robert Sweiss**  
773-498-7339  
6415 W. 63rd St.  
Chicago, IL 60638



**Theo Leonard**  
773-239-7800  
10414 S. Western Ave.  
Chicago, IL 60643



**Gwen Shaw**  
773-487-0919  
820 E. 87th Street, Ste 212  
Chicago, IL 60619



**Silver Castillo**  
773-284-5953  
6239 S. Archer Ave.  
Chicago, IL 60638



**Leo Maldonado**  
773-254-5810  
5716 S. Pulaski Rd.  
Chicago, IL 60629



**Martha Dominguez**  
773-254-5810  
3458 S. Halsted St.  
Chicago, IL 60608



**Kirk Gregory**  
773-239-7800  
10414 S. Western Ave.  
Chicago, IL 60643



**David DeSantiago**  
773-254-5810  
5716 S. Pulaski Rd.  
Chicago, IL 60629



**David Jara**  
773-284-5945  
6239 S. Archer Ave.  
Chicago, IL 60638



**Mike Sheahan**  
773-239-7800  
10414 S. Western Ave.  
Chicago, IL 60643



**Steve Phillips**  
312-583-1416  
1401 S. State St. #150  
Chicago, IL 60605



**Alonzo Nevarez**  
773-284-5539  
6239 S. Archer Ave.  
Chicago, IL 60638



**Ed Beavers**  
312-588-1404  
1401 S. State St. #150  
Chicago, IL 60605



**Tony Munno**  
708-352-5555  
6438 Joliet Road  
Countryside, IL 60525



**Nick Zegar**  
708-352-5560  
16614 W 159th St, #303  
Lockport, IL 60441



**Edgar DeLeon**  
773-498-1184  
6239 S. Archer Ave.  
Chicago, IL 60638



**Daniel Jemison**  
708-937-0023  
6438 Joliet Road  
Countryside, IL 60525



**Avangelina Cazares**  
773-424-1036  
3458 S. Halsted  
Chicago, IL 60608



**Kirk Gregory, Jr.**  
773-619-0649  
1401 S. State St. #150  
Chicago, IL 60605



Cook County Farm Bureau®  
Ag in the Classroom

# Agricultural Literacy

## AG LIT BIT

### Thankful for "the team"



Diane Merrion,  
CCFB Director  
of Ag Literacy

Our "team" of ag literacy professionals is out and about and running full steam ahead as you read this. Their schedules are full and winning record continues, just like our Chicago Bears (hopefully as of this writing). We all play an important role both here at the farm bureau and out at the schools. Here's a look at some similarities between football terms and our Ag In the Classroom world in Cook County. As Thanksgiving approaches, we give thanks to the teachers, mentors, counselors, family and friends and all who impact our lives, especially our team of presenters.

**Huddle:** When the eight presenters/teammates come together to discuss strategy of reaching Cook County classrooms this year. On offense, the Coordinator and Assistant who relay the plays in the huddle.

**Incompletion:** A scheduled class visit that falls to the ground because of a teacher strike impedes the program, a polar vortex hits or testing interferes with the attempt.

**Delay of Game:** The PowerPoint goes up on the computer, however school technology does not comply. Presenter loses valuable time.

**Holding:** The student who holds the corn, wheat or soybeans and won't pass them on to the next student.

**Encroachment:** When a participant crosses the line and makes holes in the grain game packets.

**The Center:** The presenter who handles the "ball" on every presentation.

**The Receivers:** The students who are fortunate to learn about agriculture!

**Quarterback:** The leader of the team. The teacher who takes the time to include agriculture in their classroom.

**The Fans:** All of you who support our ag literacy efforts through donations to the Foundation, volunteerism for our educational programs, and membership in the Farm Bureau. The "tickets" are really reasonable and bring education and knowledge to youth and adults right in your neighborhood. Spread the word and encourage new fans to join our team! Happy Thanksgiving.

*Diane can be reached at [aitc@cookcfb.org](mailto:aitc@cookcfb.org).*

### Hunger and Harvest Workshop

Teachers gathered at the farm bureau on October 10th to learn new lessons related to the fall harvest including the lifecycle and pollination of pumpkins (shown here), apples, corn and wheat. The subject of food scarcity and waste was also featured through the book, *The Hungry Planet* and accompanying activities. This was our last workshop of 2019, but schools may request an in-house professional development program with a minimum of 10 teachers.



### MACS Fall Grant Meeting

We presented ag-related curriculum connections at the October 15th Moraine Area Career System (MACS) Fall Grant Meeting attended by district counselors, administrators and educators held at the District 218 offices. STEM careers were identified in the fields of engineering, science, math, environmental science and technology along with lessons that could be used to encourage students to explore agriculture as a future opportunity.



### Career Day

Ball Horticulture, Kenyon Brothers Dairy Farm and FONA were all stops on our agriculture careers tour for the new ag students at Rolling Meadows High School. The focus of the program was to provide information on the education and experience needed to fill the ever-expanding jobs in our industry including plant science, animal science and food science.



This past month was filled with many outreach efforts by the Ag Literacy team at the farm bureau. While our presenters visited with students throughout the county in fourth grade classrooms, we also conducted numerous specialty visits with teachers and classrooms in other grade levels. We were excited to be able to provide extensive teacher professional development as the school year kicked off in order to provide educators with lessons and materials to be used throughout the school year. We encourage teachers, parents, and administrators to contact us for their educational needs and even consider joining the farm bureau (\$20/year) to be kept aware of ongoing resources and events we host throughout the year. The Cook County Farm Bureau® is a non-for-profit, general farm organization created in 1920. Don't miss out on all that membership can provide to you.

### Volkening Heritage Farm Partnership

We were pleased to partner with Volkening Heritage Farm in late September for a Hands-On History Program that included over 300 students from local Schaumburg and surrounding area high schools as part of their A/P Human Geography curriculum. Heritage Farm presented stations on the topics featuring agriculture in the 1800's and the Cook County Farm Bureau Ag Literacy session contrasted those presentations with a look at the impact of technology on modern agricultural practices.



### Teacher Professional Development

We were invited to conduct a professional development session at St. Alphonsus St Patrick School in Lemont that focused on using agriculture lessons including corn, pumpkins, apples and wheat. Teachers (and the Principal) enthusiastically participated in hands-on activities and lively discussion on how the concepts tie directly to STEM curriculum. We provide PD sessions as part of our AITC outreach in Cook County. 2 PDCH credits are typically awarded to educators.



### Get A Grant Workshop


Our Get A Grant Workshop featuring book and project funding through Illinois Ag in the Classroom attracted 14 teachers at the end of September. Kevin Daugherty, Director of Education, presented lessons for teachers related to books that were a part of the grant.



### Tassel to Table

William H. Brown School of Technology invited us to conduct a special program for 35 students and teachers in October. The focus of the 2 hour lesson was on the growth and distribution of grains in and around our Illinois. Highlights included seeing and feeling the types of corn grown in Illinois, uses for grains beyond our food and working with wheat grown by local farmer, Janet McCabe. A special culminating activity was the 'ever popular' Pumpkin Pie in a Bag. We hope to return early next year to focus on livestock and specialty animals.

# Agriculture Adventure for Families

 Look who's celebrating 100 years! Yes, the Cook County Farm Bureau and the lesser known NFL. Do we have anything in common? Absolutely! As we take a look at some Cook County connections to football and our beloved Chicago Bears one thing is for sure, if there was no agriculture there would be no football. Just as the National Football League will celebrate its 100th season with a year-long series of "NFL 100" events, initiatives and programming, our farm bureau has also begun to share our history via the Cooperator and social media and has many special events planned as well. Many of us will turn our attention to football that 4th Thursday in November and I hope many of you will turn to farm bureau the 4th Saturday in March when our Open House may be more exciting than the Bears/Lions game. For nearly 100 years, the NFL has been part of the fabric of America as has the Cook County Farm Bureau.



From the footballs, to the food, to the playing surface, agriculture plays a big part in the game. The footballs that are used in all NFL games are made in the United States from cow hides. Wilson Company, located in Ohio, is the provider of these footballs. The highest quality cowhides are chose, sewn together, steamed, and laced specifically. Wilson has 120 employees who produce 4,000 footballs a day by hand. According to NFL rules, every ball that is used in an NFL game must be a Wilson.

Have you ever wondered about the turf that is used? The turf grass that is used for games like these is carefully grown and cared for over the span of several months. A farmer dedicates his time to perfecting the sod in preparation. The turf has to be in perfect condition and is usually shipped to the stadium from several miles away. How about all that food you eat before, after or during the big game?



**Yep, thank a farmer!**



Source: www.usatoday.com



To modern Americans, Thanksgiving and NFL games go together like turkey and gravy, but the traditions have evolved over time. There are few traditions more associated with Thanksgiving Day than watching football, and it all started with a marketing plan to get people to care about the Detroit Lions, according to the Pro Football Hall of Fame website.

In 1934, the newly created Lions, in an effort to appeal to fans in their inaugural season, played the world champion Chicago Bears. Although the Lions lost 19-16, the game had a strong turnout – 26,000 seats sold – and was broadcast nationally on NBC Radio. The Cowboys jumped on the Turkey Day bandwagon in 1966 in an effort to build their brand and fan base as well. In 2006, the NFL added a third game to the Thanksgiving lineup.



Augustus Eugene Staley was born in 1867 near Julian, California. He is generally regarded as the father of the soybean crushing industry. As a child,

Staley had a chance encounter with an individual who brought Chinese soybeans to the U.S and shared them. Staley experienced success planting, weeding, and picking the soybeans.

Years later, Staley became concerned that the Midwest was being slowly "corned" to death by successive planting of corn. He recalled his successful childhood experience with soybeans and determined soybeans might be just the crop needed to rebuild the land through crop rotation. Staley conducted research at the University of Illinois and became convinced the soybean was a crop with great potential. Staley installed a soybean plant in Decatur, Illinois in 1922.

Decatur began to call itself the "Soybean Capital of the World." While Staley's soybean business experienced a number of rises, falls, and changes after opening its doors, the company offered a full line of soybean products including defatted soy flour, grits, flakes, and soy protein concentrate by 1980. Staley was a true pioneer in the days when the soybean was little known.

Another of A.E. Staley's achievements was his role in the creation of the Chicago Bears and the creation of the National Football League. The Chicago Bears football team started as the Decatur Staleys in Decatur, Illinois. Staley said that big-time football needed big city crowds. They moved the team to Chicago and they started playing at Wrigley field and soon became the Chicago Bears. Given that they were sharing Wrigley field with the Chicago Cubs, they decided to call themselves the Bears, arguing, tongue in cheek, that football players are larger in size than baseball players. For more info on Staley and our Chicago Bears, visit:

[staleymuseum.com/history-of-the-staley-bearschicago-bears/](http://staleymuseum.com/history-of-the-staley-bearschicago-bears/)

Source: agintheclassroom.com

Uniforms – Are made from cotton, and so are the dollar bills to pay the players!

Tickets, Programs, and Schedules – These are printed on paper from trees and possibly use soy ink made from soybeans.

Tape and Bandages – Corn dextrines and cattle gelatins are used as adhesives and binding agents.

Film for pictures – Uses cornstarch (as a spreading agent) and gelatin (as a coating and sizing agent) from cattle.

**Foods eaten at the game are also connected to Agriculture:**

Soda – Sweetened with corn syrup.

Peanuts and Popcorn – Both grown by farmers.





Soft Pretzels – Wheat flour and vegetable oil.



Source: agintheclassroom.com



## Thanksgiving Fun Facts

-  About 46 million turkeys are cooked for Thanksgiving each year.
-  Only male turkeys gobble. Female turkeys cackle instead. So if you're trying to figure out whether a turkey's a male or a female, just wait until they open their beaks.
-  Thanksgiving leftovers led to the first ever TV dinner. Swanson & Sons overestimated how much turkey would be consumed on Thanksgiving and had to get creative with the 260 tons of leftover meat.
-  An estimated 50 million pumpkin pies are eaten on Thanksgiving.

Source: www.goodhousekeeping.com/holidays/thanksgiving-ideas



Choose your prize:

Choices include a \$25 Beggar's Pizza Gift Card, a \$25 Home Run Inn Gift Card, OR \*3 AMC Movie Tickets \*AMC Yellow tickets not valid in California, New York & New Jersey.

Complete the Word Search puzzle for your chance to win! Winners will be contacted by mail.

Mail to: Cook Co. Farm Bureau

Ag Adventures Word Search

6438 Joliet Rd

Countryside, IL 60525

Fax to: 708-579-6056

Email to: FBcooperator@gmail.com

Complete and submit an entry every month all in 2019 and your name is automatically entered into an "End of Year" drawing for a gift basket full of ag themed goodies. Good luck!



**Mark Turecek**



## November Word Search

- |          |              |
|----------|--------------|
| Chicago  | Pumpkin Pie  |
| Corn     | Sod          |
| Cotton   | Soybean      |
| Cowhide  | Stadium      |
| Decatur  | Staley       |
| Football | Thanksgiving |
| Gobble   | Turf         |
| NFL      | Turkey       |

V W M U U W C I X E M P T G D  
 E R O L H O E T I C Y Z Q N E  
 C X H T W L Y P W C J T Q I C  
 N H U H B D N L N Z L U F V A  
 D R I B R I D L L G D Q H I T  
 F D O C K F O O T B A L L G U  
 E G R P A M T I S Z S B C S R  
 N P M I D G U U W I J R O K G  
 I U B S Y A O I R A A A R N C  
 P N A E B Y O S D K L F N A N  
 Z R S T A L E Y M A E U B H O  
 E D O S O F W M W Y T Y D T T  
 P V I J C X K L D J Q S B I T  
 U O W Q W N R K F Z D N O Y O  
 M B J K S Z K K T B S B G I C

Name: \_\_\_\_\_

Phone #: \_\_\_\_\_

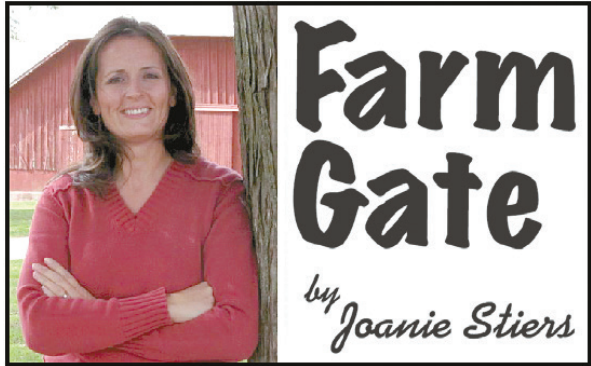
Membership #: \_\_\_\_\_

(Membership # is located on front of paper)

**If you were to win, check your preference:**

\_\_\_ Beggar's Pizza GC \_\_\_ HRI GC \_\_\_ 3 Movie Tix  
 (If a choice is not made, movie tickets will be sent)

Deadline is the 20th of each month.



## Harvest Traditions Shine Through Challenges

Much of what I love about farm life convenes in a corn field on a harvest evening: crisp fall air, incredible sunsets, comfort foods and the synergy of family and employees-who-are-like-family working together to gather the harvest. Ideally, only the delivery of a hot meal interrupts the harvest pace, not a breakdown.

Harvest traditions stir similar emotions today as they did during my childhood, despite how different the season's pace looks. High-capacity combines make gathering crops unbelievably faster than in my grandpa's day. Sensor-driven, hands-free guidance especially helps our combines through those areas where drone images identified wind-ravaged corn stalks. Our smartphones monitor the weather and even remotely control the drying needs for our corn before it enters on-farm storage.

Yet, that progress hasn't changed our traditional roots, best evidenced through the kids. By age 4, my son identified picking corn with Grandpa as one of his favorite things about the farm. By age 5, my daughter sketched fall sunsets, detailing in crayon the vibrant shades of orange, pink and purple. Now middle schoolers, my kids still cheer for field meals that the farm women deliver, particularly when barbecued meatballs make the menu. This ultimate "dining out"

experience re-energizes the crew and offers a chance for family time during 14-hour harvest days.

During weekend visits to the field, the kids enjoy a chance to talk on the two-way radio and announce wildlife sightings. They distribute baggies of homemade treats marked with safety messages. The kids excitedly carry a personal cooler filled with snacks like the harvest crew, but their great grandpa's "dinner pail" ranks extra special. It contains red licorice, luring riders to his tractor and highlighting the uniqueness of four generations of family together harvesting the same field.

These traditions help carry us through this growing season, one of the most challenging in recent years. Harvest started a month late after the delays from a historically wet planting season. The bummer: we may not finish before Thanksgiving, a time when we traditionally celebrate the completed harvest. Harvest may spill into December, pending weather. "Christmas carols in the combine," my husband said. I will admit my obsession with Christmas music, but that's one harvest tradition I want to avoid.

*About the author: Joanie Stiers' family grows corn, soybeans and hay and raises beef cattle in West-Central Illinois.*

## New Federal Mandate for Driver's License Upgrades

A congressional mandate under MAP-21, final rule published in 2016, seeks to enhance safety by requiring entry-level driver training (ELDT). As a result, beginning on February 7, 2020, before a driver may apply for or upgrade to a Class A or B CDL or seek an endorsement for hazardous materials (H), passengers (P), or school busses (S), the driver must complete entry-level driver training. The training must be provided by an entity listed on the Federal Motor Carrier Safety Administration's (FMCSA's) Training Provider Registry website. The training must include both classroom and behind-the-wheel components.

This training only applies to drivers applying for a CDL, upgrading to a new class of CDL, or seeking an additional endorsement. Those renewing an existing CDL and not seeking to change the class of license or add an endorsement will not be required to undergo training. Those with a non-CDL driver's license are also not required to have training. This includes the non-CDL J50, and the non-CDL J51 license available to those that qualify for farmer exemptions from the CDL.

Entities can be eligible to provide their own training. "Entities" does include owner-operators and individuals and several others. Entities can begin registering to be a training provider in November 2019. The FMCSA lists the steps for an entity to be eligible to be listed on the Training Provider Registry at: <https://www.fmcsa.dot.gov/commercial-drivers-license/eldt/faq-training-providers>

## Family Farm and Food Bytes



USDA photo

**LONGER LASTING AVOCADOS? (Chicago Tribune)** – A new technology that extends the life of avocados and other produce is coming soon to grocery stores nationwide. Apeel Sciences, a California startup that aims to reduce food waste by giving produce a spoilage-resistant skin, announced that its longer-lasting avocados will be sold at more than 1,100 Kroger grocery stores across the country. Avocados treated with Apeel's protective coating tend to achieve ideal ripeness for four to six days – double the regular window of two to three days.

**SOYBEANS FEATURED IN SUSTAINABLE HOME PRODUCTS (FarmWeek)** - There are more than 1000 soy-based home products currently on the market, from flooring and roofing products to candles and carpets. Several leading bio-based home products using soybeans include PureBond plywood, Roof Maxx (a roof regenerating spray treatment), Rust-Oleum wood stain, Acri-Soy sealers (for concrete, wood and grout), and Demilec Heatlok Soy 200 Plus insulation. To learn more about soy-based products, visit [www.unitedsoybean.org/topics/new-uses](http://www.unitedsoybean.org/topics/new-uses)

**USDA INVESTS \$11M IN RESEARCH THAT WILL SUPPORT SPECIALTY CROP FARMERS (USDA)** – U.S. Department of Agriculture Deputy Under Secretary Scott Hutchins announced that the National Institute of Food and Agriculture has invested \$11 million in research that will support specialty crop farmers.

**EAT LESS RED MEAT, SCIENTISTS SAID. NOW SOME BELIEVE THAT WAS BAD ADVICE (New York Times)** – Public health officials for years have urged Americans to limit consumption of red meat and processed meats because of concerns that these foods are linked to heart disease, cancer and other illnesses. But recently, in a remarkable turnabout, an international collaboration of researchers produced a series of analyses concluding that the advice, a bedrock of almost all dietary guidelines, is not backed by good scientific evidence. If there are health benefits from eating less beef and pork, they are small, the researchers concluded. The advantages are so faint that they can be discerned only when looking at large populations, the scientists said, and are not sufficient to tell individuals to change their meat-eating habits.



National Cattlemen's Beef Association photo

**NEW COTTAGE CHEESE SNACK (FarmWeek)** – Prairie Farms Dairy has added a new, 5ounce Small Batch Cottage Cheese cups to provide a delicious and nutritious single-serve snack anytime of the day. The product includes flavors like Zesty Fiesta, Garden Veggie, Pineapple, Strawberry and Peach and can be found at area retail and food service stores.

**U.S. WIDENS TRADE WAR WITH TARIFFS ON EUROPEAN PLANES, CHEESE, WHISKY (Reuters)** – The U.S. said it would slap 10% tariffs on European-made Airbus planes and 25% duties on French wine, Scotch and Irish whiskies, and cheese from across the continent as punishment for illegal EU aircraft subsidies. The announcement came after the World Trade Organization gave Washington a green light to impose tariffs on \$7.5 billion worth of EU goods annually in the long-running case.

**FORMER AGRICULTURE SECRETARIES ANNOUNCE SUPPORT FOR USMCA (USDA)** – All former U.S. Secretaries of Agriculture since President Reagan's Administration announced support for the United States-Mexico-Canada Agreement (USMCA). In a letter to Congressional leaders, former Secretaries John Block (Reagan), Mike Espy (Clinton), Dan Glickman (Clinton), Ann Veneman (W. Bush), Mike Johanns (W. Bush), Ed Shafer (W. Bush), and Tom Vilsack (Obama) underscored the importance of passing USMCA.

Continued on page 11

**Lucky's ENERGY SERVICE**

**We offer wet hosing, bulk tank fills and package lubricants – D.E.F, Oil, Hydraulic, Diesel and Gas for all your needs.**

**We are a 24/7 Fuel Supplier servicing Illinois – Wisconsin – Indiana**

**Call us today at 847-994-3010 or visit us online at [www.luckysenergy.com](http://www.luckysenergy.com)**

**Growing To Serve You Better**



# Advocates Call for Aldermen to Negotiate Horse Carriage Ordinance and Rules

For several years Chicago horse carriage operators and aldermen have been at odds over the operation of carriages on city streets. Opponents of the carriages claim that they are antiquated and a relic of Chicago's history. Proponents of the carriage argue that what truly needs to be revised is the ordinance and rules the governing the operation of Chicago's horse carriages.

Cook County Farm Bureau staff have been working closely with the carriage operators and Horsemen's Council of Illinois and have identified

several areas of improvement including:

- Clarification of carriage operation hours as opposed to eight different timeframes based on location, days of the week, or holidays
  - Areas of operation, including allowing additional locations away from downtown areas
  - Conflict between the ordinance and rules regarding where the temperature is measured
- It's also important to note that the original ordinance was not created by veterinarians; instead it was created by individuals involved with the

Chicago Police Department, mounted division. Decisions regarding animal care and use should be made by experts, including veterinarians and equine owners.

The rules governing horse carriage operations were created in 2011 prior to the addition of pedicabs or the increased traffic in the downtown area.

Cook County Farm Bureau staff will continue monitoring this issue and will continue to engage with advocates and city of Chicago Aldermen.

## Chicago's Anti-Animal Ordinance

City of Chicago Alderman Raymond Lopez followed through on his threat to introduce an ordinance to limit livestock from residential areas without a "Livestock Permit" from the Commissioner of Health. "Livestock" includes domesticated four-legged farm animals, including, but not limited to swine, sheep, and goats. The ordinance also limits "fowl" which includes any poultry or waterfowl. "Roosters" are defined separately.

Individuals wishing to keep livestock or fowl shall apply for a "Livestock Permit." Necessary information for the permit includes address, dimensions of the area where the animals will be kept, number and species of livestock and fowl

the applicant wishes to keep, and any additional information deemed necessary about the Commissioner of Health.

The ordinance prohibits roosters from living in a residential district.

The ordinance further regulates urban farms and requires a license for operation. The ordinance provides that before issuing a regulated business license to an urban farm, the Commissioner of Business Affairs and Consumer Protection shall consult with the Commissioner of Health and notify the alderman of the affected ward.

Farm Bureau staff will monitor the issue and engage if appropriate.

## Voting Members Receive "SNAP" Viewpoint Survey

In October, Farm Bureau voting members who have provided their email addresses received a "SNAP" Viewpoint Survey. The purpose of this survey was to gauge members' thoughts on the Cook County Forest Preserve District's possible property tax increase. The question is below:

Forest Preserve Commissioners may ask homeowners to foot the bill for a property tax increase to fund improvements to the Cook County Forest Preserves. On average, Cook County homeowners pay around \$50 per year for the preserves. While not final, early estimates would ask voters to pay an additional \$17 per year. The increase is anticipated to raise over \$40 million per year.

**Do you support a tax increase?**

Yes  No  No Opinion

**If yes, how should additional tax funds be spent?**

- Purchasing additional forest preserve acres
- Improvements to the Brookfield Zoo
- Improvements to the Chicago Botanic Gardens
- Shore up pension funds
- Adding additional amenities at existing sites
- Maintenance of existing sites

Shortly after the survey was released to members Cook County President Toni Preckwinkle announced that a property tax increase would not be considered by voters.

## Farm Bureau Advocates for Clearer Zoning Regulations

In partnership with Cook County Zoning Committee Chair Peter Silvestri and his staff, Farm Bureau secured clean-up language to the Cook County Zoning Code regarding the minimum acreage required for the care and keeping of horses by private owners in Cook County.

Under the changes, a single horse is allowed per one acre for private stables. Private stables are intended for the private use of the owner and would exclude stables operated for "hire." Boarding and riding academies are regulated separately.

The amendment further exempts farms from additional regulations concerning maximum number of animals.

Cook County Farm Bureau applauds and appreciates the willingness of Commissioner Silvestri and the County Zoning Committee to listen to Farm Bureau's concerns and to work towards a compromise.

As the county's largest general farm organization, Cook County Farm Bureau® is dedicated to bridging the gap between farmers and urban consumers. Through education programs targeting youth and their parents and programs designed to connect farmers with potential consumers, Farm Bureau members are actively engaging in conversations about food and the shared values between farmers and consumers.



By Bona Heinsohn, CCFB Director of Gov. Affairs and Public Relations

## Manifolds, Manolos, and Manure

Last fall I wrote about my blue-eyed girl who quietly entered the world one hot Father's Day kicking it around a barrel pattern. Despite her inability (and lack of desire) to ride a bike she's learned to lope and more importantly to stay in the saddle.

We've spent the last year building a relationship with a big red gelding named "Mahalo." Mahalo is a less than magical escape artist; he just breaks his halters. Two of them in under six months. He'll kindly carry my big little boy with no official eye color at a jog despite said big little boy yelling "faster" and randomly swinging his legs. But he'll pick your pockets clean if you're not paying attention. He won't bat an eye when you're picking off scabs or scratches, but he acts like life is ending if you approach his face with a spray bottle. Despite my farmer's protests, Mahalo was an amazing addition to our family.

"Mahalo's" foray into barrel racing has been nothing short of a disaster. Races have people watching. Barrels. And he has to run! Throughout the year he's learned to load and trailer. And after so many false starts he's running a clean pattern. Not



perfect. Not money winning. But consistently clean.

This summer he carried my blue-eyed girl through her first official race. No hesitation. No bucking. Sound and sane. This fall he carried my blue-eyed girl through two races. Again, no hesitation. No bucking.

My farmer taught me about animal care. Mahalo has taught me about animal feeding. I've studied feed tags, supplements, and articles. I have listened to my veterinarian and farrier; with their help we've built him a ration that provides a little extra for his hooves and coat while ensuring that he remains healthy and well fed. We've added an injectable joint

supplement and sunflower seeds for his coat.

I know that animals need proper care, food, and water to be productive. This translates to horses. In Chicago, activist groups are labeling horse carriage operators and the entire industry as abusive, inhumane, and outdated. While individuals are entitled to different opinions, there is no evidence that carriage horses are mistreated. Chicago's carriage horses have access to food, water, and shelter. They work a six-hour workday in comfortable conditions. I can pull the carriages that the horses pull in Chicago. My closest friend and I can pull the carriages loaded. They're not heavy, they're made to be easily pulled.

Activist groups also argue that cities aren't the place for horses because of the traffic and noise. Through scrupulous training and handling, carriage horses are comfortable in loud, urban areas. The horses' owners wouldn't bring an untrained and a poorly acclimated horse into the city.

Horses built Chicago. Horses have an inherent drive to work. Even my big red gelding, has a drive to work. Some drive. He loves every opportunity to take laps around the hay field or traverse the woods. Keep your eyes open for a pineapple wearing big red boy running around the barrels next spring.

# 19th Annual Giant Pumpkins, Dessert, Carving, and Local Honey Contest

|                                     |           |                     |                           |
|-------------------------------------|-----------|---------------------|---------------------------|
| Giant Pumpkin Contest   Adult       | 1st       | Don Carlson         | 530 lbs                   |
| Giant Pumpkin Contest               | 2nd       | Rick Homerding      | 161 lbs                   |
| Giant Pumpkin Contest               | 3rd       | Joy Homerding       | 153 lbs                   |
| <b>The Winners Circle!</b>          |           |                     |                           |
| Giant Pumpkin Contest   Youth       | 1st       | Jessica Miller      | 112 lbs                   |
| Giant Pumpkin Contest               | 2nd       | Amelia Doorneweerd  | 73 lbs                    |
| Giant Pumpkin Contest               | 3rd       | Valerie Doorneweerd | 57 lbs                    |
| Local Honey Contest                 | 1st       | Mike Davies         | Moraine Valley Honey Farm |
| Local Honey Contest                 | 2nd       | Joe Miller          | Miller Honey              |
| Local Honey Contest                 | 3rd       | Marge Trocki        | Bee Wild Honey            |
| Pumpkin Carving Contest             | 1st       | Daisy Rivera        |                           |
| Pumpkin Carving Contest             | 2nd       | Mary Gavenda        |                           |
| Pumpkin Carving Contest             | 3rd       | Sailly Rivera       |                           |
| Pumpkin Dessert Contest             | 1st       | Maricel Rivera      |                           |
| Pumpkin Dessert Contest             | 2nd       | Theresa Doorneweerd |                           |
| Pumpkin Dessert Contest             | 3rd       | Sailly Rivera       |                           |
| Pumpkin Decorating Contest  0-6 yrs | 1st       | Max H               |                           |
| Pumpkin Decorating Contest  0-6 yrs | runner up | Ella W              |                           |
| Pumpkin Decorating Contest  7-11    | 1st       | Kaitlyn G           |                           |
| Pumpkin Decorating Contest  7-11    | runner up | Zachary G           |                           |
| Pumpkin Decorating Contest  12-16   | 1st       | Carolina R          |                           |
| Pumpkin Decorating Contest  12-16   | runner up | Cassandra R         |                           |

Thank you to Puckerville Farms in Lemont for hosting the event! All event photos online at: <https://cookcfb.org/discover-local/community-programs/profile/contests>



Board members Dan Biernacki, Jim Bloomstrand and Gerry Kopping award 2nd place to Mary Gavenda for her pumpkin carving, a pirate ghost ship.



Local honey and pumpkin dessert contest judges had a difficult time selecting the winners as all were so deserving!



The Rivera ladies always deliver at the contest, going home a winner in many categories!



CCFB volunteer judge, Alex (left), enters the official weight of Don Carlson's winning pumpkin, 530 pounds which is giant considering the difficult growing weather!



# Cook County Financial Representatives of the Month

The Financial Representative of the Month program is designed by Country Financial Agency Managers of Cook County to recognize overall Insurance Leaders in Life, Disability, Auto, Home, and Health production during the month. The agent earns the award through efforts to provide quality service to existing and new clients. Listed below are the various agents honored by their agency manager with the Financial Representative of the Month designation.



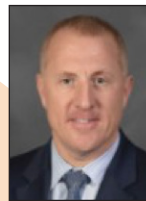
**Violetta Kaminska**  
Chicago North Agency, Victoria Nygren, Agency Manager  
Violetta Kaminska has been named Career Financial Representative of the month for September 2019. Her office is located at 3339 N. Harlem Ave, in Chicago, IL. Her phone number is 773-427-2851. Violetta has been a Financial Representative since April 2009.



**Margaret Ryska**  
Chicago Northeast Agency, Sharon Stenke, Agency Manager  
Margaret Ryska has been named Employee Financial Representative of the month for September 2019. Her office is located at 1426 W. Fullerton. Ave., in Chicago, IL. Her phone number is 773-628-2660. Margaret has been a Financial Representative since September 2017.



**Matthew Powell**  
Chicago Northeast Agency, Sharon Stenke, Agency Manager  
Mathew Powell has been named Career Financial Representative of the month for September 2019. His office is located at 4200 W. Euclid Ave., Suite E, in Rolling Meadows, IL. His phone number is 847-934-5117. Matt has been a Career Financial Representative since February 2005.



**Ray Massie Jr.**  
Chicago Northwest Agency, Jack Smith, Agency Manager  
Ray Massie Jr. has been named Employee Financial Representative of the month for September 2019. His office is located at 25 NW. Point Blvd., Ste. 850, in Elk Grove Village, IL. His phone number is 847-794-1217. Ray has been a Financial Representative since May 2019.



**Brett Riekema**  
Chicago Northwest Agency, Jack Smith, Agency Manager  
Brett Riekema has been named Career Financial Representative of the month for September 2019. His office is located at 23042 N. Main St., in Prairie View, IL. His phone number is 847-415-2666. Brett has been a Financial Representative since May 2011.



**Renata Bondarowicz**  
Chicago South Agency, Jeff Maxson, Agency Manager  
Renata Bondarowicz has been named Employee Financial Representative of the month for September 2019. Her office is located at 1515 E. Woodfield Rd., Suite 930, Schaumburg, IL. Her phone number is 847-891-6388. Renata has been a Financial Representative since July 2016.



**Alonzo Nevarez**  
Chicago South Agency, Jeff Maxson, Agency Manager  
Alonzo Nevarez has been named Career Financial Representative of the month for September 2019. His office is located at 6239 S Archer Ave., Chicago, IL. His phone number is 773-284-5539. Alonzo has been a Financial Representative since September 2018.



**Kirk Gregory Jr.**  
Chicago South Agency, Jeff Maxson, Agency Manager  
Kirk Gregory Jr. has been named Employee Financial Representative of the month for September 2019. His office is located at 1401 S. State St., Suite 150, Chicago, IL. His phone number is 773-619-0649. Kirk has been a Financial Representative since February 2018.



**Nora Beverly**  
Orland Park Agency, Cary Tate, Agency Manager  
Nora Beverly has been named Career Financial Representative of the Month for September 2019. Her office is located at 1938 E. Lincoln Hwy., Unit 217, in New Lenox, IL. Her phone number is 708-429-7789. Nora has been a Financial Representative since August 2011.



**Kevin Gardner**  
South Holland Agency, Jeff Orman, Agency Manager  
Kevin Gardner has been named Employee Financial Representative of the Month for September 2019. His office is located at 3923 W. 95TH St., in Evergreen Park, IL. His phone is 708-425-2251. Kevin has been a Financial Representative since July 2016.



**Kyle Stevens**  
South Holland Agency, Jeff Orman, Agency Manager  
Kyle Stevens has been named Career Financial Representative of the Month for September 2019. His office is located at 30 S Ash St., in Frankfort, IL. His phone number is 815-464-9018. Kyle has been a Financial Representative since December 2005.



**John Tymn**  
South Holland Agency, Jeff Orman, Agency Manager  
John Tymn has been named Employee Financial Representative of the Month for September 2019. His office is located at 10607 S. Harlem Ave., Unit 1A, in Worth, IL. His phone number is 708-480-5091. John has been a Financial Representative since June 2019.

### Classifieds

All ads that we receive for The Co-Operator are also listed on our website at [cookcfb.org/membership/classifieds](http://cookcfb.org/membership/classifieds). If you have a photo of the item(s) that you are selling you can email it to us to include it on our 'Classifieds' page on our website only along with your ad. Email your ad (and photo if you have one) to [fbcooperator@gmail.com](mailto:fbcooperator@gmail.com). Please be sure to include your full name, Farm Bureau number, and phone number. Deadline for Classified ads is the 17th of each month. Any ads submitted after the 17th will appear in the following month's Co-Operator. Members may run up to four non-commercial classified ads annually for free. Any ads submitted after the fourth, will be charged. If mailing your ad, please mail to: Cook County Farm Bureau, Attention: Classified Ads, 6438 Joliet Rd, Countryside, IL 60525. You can also fax your ad to 708-579-6056..

### For Sale

40/ 2 Battery charger/starter, 2 Craftsman tool chests over full of tools, 2 Tap & Die sets, 2 Ton Omega engine hoist on wheels, 750lb Engine stand, Transit, Generator, Power washers, light bar, socket sets, drill bits, drills, electric sanders, grease guns, tubes of grease, 100pc mechanic socket set. Sold all together for \$2000. Call Connie at 708-429-7815.

Cabela's Getaway Cabin 4-person tent with screenhouse- originally \$400 asking \$150 used once. Also, 4 army cots accommodating up to 375# never used asking \$50 each. Call Mary Lou at 708-798-1229 and leave a message for me to call you back.

Werner Heavy duty 30'feet extension ladder aluminum fiber glass combination new \$1600 my price asking \$275. Looking for Elephant collectors, I have 40 wooden carvings all small sizing. Asking \$200 or best offer. Call Eddy at 708-758-9119.

A ten horsepower Ryobi Snow blower \$250 or best offer. Courvoisier Erte collection Limited Edition un-open, brand new power tools, high end guns. Call Jim at 773-581-4400.

A 96"x 16" 3 color, red white and blue LED electric moving message sign for sale. It was used on and off for 2 1/2 years. Original Price \$3000. Asking \$600 or reasonable offer. Will demonstrate, call 773-208-6327 in Sugar Grove.

12' Alumina Craft Ducker Canoe/ Boat D2613. Great condition. Lansing, Illinois location but will travel 100 miles for delivery. \$1000. Call Ron at 708-712-4662.

### Vehicle

2002 Jaguar XKR 100 Limited Edition Supercharged convertible every available option, with 16K on it. For details call Jim at 773-581-4400.

### Wanted

Wanting to buy your electric trains and slot cars, turn those unwanted Trains and Cars into Cash! Call Ron at 630-272-4433.

Wanted vintage plastic dealer promo cars & trucks, cast iron and tin toys, toy outboard motors also windup and slot cars. Call Jim at 708-361-8230.

Hoping to help a disabled Vet, searching for a donation of a home use electric wheelchair or scooter for an American Legion member Vietnam vet with Parkinson's in Palatine. New/used condition, preferably not broken. North & NW suburbs preferred. Call 847-991-6237 please leave message.

## This Month in Cook County Agriculture

- **Pumpkin Smash 2019** is Saturday, November 2nd from 9 a.m. -12 p.m. at Chicago High School for Ag Science, 3827 W 111th St, Chicago, Illinois Extension welcomes you to compost your pumpkin: "Don't Trash it, Smash it!" For an additional location near you: [www.scarce.org/pumpkins](http://www.scarce.org/pumpkins).
- Shop small/local farm stands and businesses on November 30th. **Small business Saturday** is celebrated on the Saturday after Thanksgiving in the United States. This is a day that members are encouraged to patronize local farmstands and farm businesses to show support for these family-owned operations. What a great opportunity to purchase a Christmas tree, poinsettia or other flowers, or a holiday wreath.

*This article is for local farmstands, farmers' markets, chefs and restaurants, and organizations that are hosting farm-related activities, events, workshops, and gatherings that will occur soon. To promote your activity, email [membershipdebbie@cookcfb.org](mailto:membershipdebbie@cookcfb.org) or call 708-354-3276 by the 15th of the month. Please include your name, the event date/time, a short description of the event, and how a reader can obtain further information in the email. We will edit submissions based on space allowances in the publication. In addition, we will post farm, garden, or livestock related photos on our social media platform if you forward those to [membershipdebbie@cookcfb.org](mailto:membershipdebbie@cookcfb.org).*

## Farm Shadows Program to focus on Agricultural Career Exploration

*Continued from page 1*

- We can also provide you with ways to connect with schools including:
- Volunteering for a Career Day speaking engagement at a local school
  - Judging a Science Fair at a local school
  - Serving as a judge during FFA contests such as parliamentary procedure, public speaking or job interview
  - Volunteering at an Ag in the Classroom educational event to showcase your occupation
  - Listing your career openings (part-time, summer, volunteer) through our monthly newsletter

Our farm shadow program provides a way to give back to the next generation through our middle school, high school and even some college programming. We feel this is a wonderful opportunity for our members to reach the next generation and get them excited about the diversity of careers related to the field of agriculture.

If you would like be included as a contact in this new program, please reach out to Diane Merrion or Bob Rohrer at 708-354-3276 or via email at [aite@cookcfb.org](mailto:aite@cookcfb.org) or [brohrer@cookcfb.org](mailto:brohrer@cookcfb.org).

## Family Farm and Food Bytes

*Continued from page 8*

**IFB APPLAUDS SIGNING OF US-JAPAN DEAL (FarmWeekNow)** - The agreement immediately eliminates all tariffs on U.S. exports of sweet corn, almonds, broccoli and prunes, among other things. Other tariffs on products such as ethanol, cheese and whey, fresh cherries, and other farm and ranch products will be phased out over a number of years. The U.S. will also benefit from increased export quotas on products such as corn starch, malt, potato starch, fructose, and more. Within days of taking office, President Donald Trump withdrew the U.S. from the Trans-Pacific Partnership, (TPP) which has since been signed without the United States. "This is about 55 billion dollars' worth of trade," said US Trade Representative Robert Lighthizer. "With this, we'll have more than 95% of the GDP that would have been in TPP. So, it's very important for farmers. It's also important for digital trade."

**FOOD, FARM FACTS BOOK/CARD GAMES (FarmWeek)** -The American Farm Bureau Foundation for Agriculture has produced a new Food and Farm Facts book, map and pocket guide. The booklet helps answer the questions "Where does our food come from?" and "Who grows it?" It features 32 pages of full-color features including updated facts and easy to read infographics. Copies of the booklet sell for \$4.25 each and can be ordered at [www.agfoundation.org/resources/food-and-farm-facts-2019](http://www.agfoundation.org/resources/food-and-farm-facts-2019)

The American Farm Bureau Foundation for Agriculture has also released two new card games making learning about agriculture



fun for children. Natural Resources Playing Cards (3rd - 5th grade) highlight the role of agriculture in feeding and clothing people around the world.

Animal Housing Matching Cards (pre-k - 2nd grade) illustrate various types of housing for farm animals. [www.agfoundation.org/resources](http://www.agfoundation.org/resources)

**About Family Farm and Food Bytes:** This is a collection of articles gathered from both mainstream and agriculture media and is designed to keep you informed as a member and leader within the Cook County Farm Bureau organization. The articles summarized above are not intended to represent Cook County Farm Bureau policy or positions, but rather to provide members an idea of what is being reported regionally, nationally, and globally.

Cook County Farm Bureau members get \$500 Bonus Cash toward the purchase or lease of any eligible 2018/2019 Ford vehicle or \$750 Bonus Cash toward the purchase or lease of any eligible intelligently designed 2018/2019 Lincoln vehicle.

Enjoy valuable savings on your choice of vehicles from our comfortable and capable lineup! Take advantage of this exclusive special offer today by visiting our home page at [www.cookcfb.org](http://www.cookcfb.org) and click on "Member Benefits."

\*Must be an eligible member for at least 30 consecutive days to take advantage of the Ford/Lincoln program.

**Together our work grows agricultural literacy**

The IAA Foundation is proud to support local ag literacy by awarding grants to 81 ag coalitions serving 89 Illinois counties including the Cook County Farm Bureau's Agriculture Literacy Program. Last year this grant along with our foundation helped us reach over 29,000 students in Grades K-12 and 1,200 teachers, including a full summer academy with 21 educators on our bus. Together we are impacting the future of agriculture. Together, we are growing a more ag literate society.

[IAAFoundation.org](http://IAAFoundation.org)  
[AgInTheClassroom.org](http://AgInTheClassroom.org)

**Register today for the following great programs by calling the office at 708-354-3276 or visiting the website at [www.cookcfb.org](http://www.cookcfb.org).**



**Winter Wellness with Essential Oils Rollerball Make & Take Workshop**

**Date:** Thursday, November 14  
**Time:** 7-9 p.m.  
**Location:** CCFB building 6438 Joliet Rd., in Countryside  
**Price:** First rollerball free (for ccfb members), (non-members) \$5. Additional rollerballs \$5.  
**Registration:** Call the CCFB office to register for the event.

Don't let seasonal threats take you down, learn how to fight back naturally! Learn tips on how to boost your immune system, deal with seasonal issues, and keep you and your family healthy this season with essential oils.



**Build a Holiday Centerpiece**

**Date:** Tuesday, November 19  
**Time:** 6:30-9 p.m.  
**Location:** CCFB building, 6438 Joliet Rd. in Countryside  
**Price:** Admission is \$35 for members (regularly \$45). Admission will include all supplies, snacks and soft drinks.  
**Registration:** [www.eventbrite.com](http://www.eventbrite.com) search Cook County Farm Bureau

Create a holiday centerpiece to display on your table this holiday season! No artistic experience required with step by step guidance. Choose from three holiday greetings.



**Webinar for Farmers & Agricultural Businesses**

**Date:** Tuesday, November 19  
**Time:** 8 a.m.  
**Location:** Participants will be able to participate from their farm, home tractor combine or anywhere, using their phone or computer!  
 Presented by ComEd Agriculture Energy Efficiency Program.  
**Registration:** Details & registration at the Member Center or by calling the CCFB office, or you can email [membershipdebbie@cookcfb.org](mailto:membershipdebbie@cookcfb.org).

Learn how to help your farm or agribusiness save money and energy today with ComEd Agricultural offering.



**Holiday Porch Planter Workshop at Clarke's Garden Center**

**Date:** Saturday, November 23  
**Time:** 10 a.m.  
**Location:** Clarke's Garden Center, 2061 E 14th St. in Lynwood  
**Price:** \$35 for Member and guest registration required in advance  
**Registration:** Call the Farm Bureau or go online at the Member Center.

Create a winter planter to display on your porch, patio or balcony area while learning planting tips and tricks from the experts. Workshop includes pot, soil, and all plantings. Don't wait...class size is limited!



**Cook County Farm Bureau Young Leaders Winter Coat Drive**

**Date:** October – Mid December  
 Benefiting "Together we Cope", the CCFB Young Leaders Group will be collecting new and gently used winter coats for those in need this winter. All sizes accepted (newborn- 5x). (A local 501C (3) charity focused on preventing homelessness and serving local residents through a food pantry).

**Drop off locations**

- |  |  |   |
|--|--|---|
| Cook County Farm Bureau<br><b>Time:</b> M-F 8 a.m.- 4:30 p.m.<br><b>Location:</b> 6438 Joliet Rd., Countryside | Ted's Greenhouse<br><b>Time:</b> M-F 9 a.m.- 5 p.m., Saturday 9 a.m. - 3 p.m.<br><b>Location :</b> 16930 S. 84th Ave., Tinley Park | Historic Wagner Farm<br><b>Time:</b> Open Daily 9- 5 p.m.<br><b>Location:</b> 1510 Wagner Rd., Glenview at Heritage Center Front Desk |
|--|--|---|

**Beekeeping Courses Offered at the Cook County Farm Bureau**



- **Beginning Beekeeping**  
Feb. 29 & March 1 | Saturday & Sunday  
9 a.m. – 3 p.m. both days  
Fee: \$75.00 for CCFB & CDDBA members
- **Q & A Help Sessions**  
April 20 6:30-8:30 p.m. | Monday  
May 18 6:30-8:30 p.m. | Monday  
Fee: \$20.00



Register by calling 708-354-3276 or online at the Member Center at [www.cookcfb.org](http://www.cookcfb.org)

*Happy Thanksgiving*

to you, your family and friends from your Cook County Farm Bureau family and friends! Enjoy a special meal courtesy of agriculture!

