



# CO-OPERATOR

To serve all our members of the Cook County Farm Bureau® with meaningful and beneficial programs that reflect our agricultural heritage.

## Mark Your Calendar

### APRIL

21 Industrial Hemp – 1 Year Later Webinar pg. 12  
Postponed & Rescheduled Events pg. 12

### BREAKFAST AT THE FARM BUREAU

100 Year Anniversary has been postponed and rescheduled till further notice. Stay posted for date and time.

For participation details on postponed or upcoming programs and activities, check out the related information in this publication, go to [www.cookcfb.org](http://www.cookcfb.org), or contact the office at 708-354-3276. You can register for most programs using the Member Service Center at [www.cookcfb.org](http://www.cookcfb.org).



In celebration of Food Checkout Day and the nutritious food local farmers grow and raise, Cook County elementary and high school students collected dimes as part of "Dimes for Dairy." All donations raised by the students were used to purchase dairy products for the families who rely on Together We Cope's services. To further support Food Checkout Day and Together We Cope, Prairie Farms Dairy donated fluid milk.



Mark Tolene from Prairie Farms Dairy (pictured left) along with Diane Merrion of Cook County Farm Bureau, and Tony Roman of Together We Cope, celebrate Prairie Farms' donation of fluid milk for the families who rely on Together We Cope's services. Local elementary school students raised over \$3,800 in support of Food Checkout Day. See more photos of Food Checkout Day on page 5.

## Historical Question of the Month

See page 2 for a historic photo from the CCFB'S first 100 years and respond to the question related to the photo.

February's winner is  
**Sam VanVuren**

*Last month's question: For the past 19 years, Farm Bureau has celebrated the healthy and nutritious food grown and raised by local farmers during what program?*

*Answer: Food Checkout Day*



## UPDATE

### COVID-19, 100-Year Anniversary Event and Service to Members

Cook County Farm Bureau® has been monitoring the developments related to COVID-19 (coronavirus). Circumstances are changing daily. Aggressive and preventative measures are being taken to protect our individual and collective health requiring many of us to adjust our normal practices, impacting all of our daily lives.

Due to our concern and interest in member safety and well-being, the Board of Directors postponed the Breakfast at the Farm Bureau 100 - Year Anniversary Celebration that was scheduled for March 28, 2020. The "shelter in place" order from the Governor soon followed. We will be setting and announcing a new date for the celebration at a later time and we will be sure to let members know about the re-scheduled event. We really appreciate the wide-spread member interest in being a part of this special time in the life of Cook County Farm Bureau.

Through this trying and concerning time, Cook County Farm Bureau will continue to support our farmer and associate members through delivery of membership benefits and services, information and communication and

issue/ag literacy management through technology. Please call 708-354-FARM (3276) from 8 a.m. 4:30 p.m. CT Monday - Friday for questions, information, and service. You can also access information and services through our website, [www.cookcfb.org](http://www.cookcfb.org), or our Facebook page.

Some of our meetings and programming have been transitioned to online or delayed/postponed. We will continue to evaluate the most prudent delivery methods. Please check our website or Facebook pages for the latest information.

We are working with the Illinois Farm Bureau to communicate to state and federal officials a number of farmer needs including access to capital, food processing and transportation delivery, and the farm input handling and supply system that farmers count on to continue operations. Farming and food production are essential services.

We know the struggles members face are real and certainly not trivial. We wish all of our members the very best of health now and always and thank you for your membership.

**In uncertain times, Cook County Farm Bureau is here for you.** We are focused of support of our area farm, greenhouse, livestock and food providers. We have expanded online Ag Literacy resources and activities, Commodity/Marketing programs, Membership support, and

social media communications.

In this uncertain and rapidly changing situation, it can be hard to find the information you are looking for. We created our COVID-19 Resource page, which has quickly become a go-to source of information for our members and farm community.

With state, local and federal links, as well as government and small business loan information, we hope this page helps you navigate the current options available to support your business and employees.

Information is available at [Cookcfb.org/stay updated/](http://Cookcfb.org/stay updated/) COVID- 19.

## Who We Are...

Cook County Farm Bureau is made up of many members including farmers, landowners, foodies, greenhouse operators, specialty growers, food consumers and customers of the Farm Bureau's affiliated companies (Country Financial, Conserv FS, IAA Credit Union, etc.). We bring together many members with diverse backgrounds and food interests to support the success of local farmers and to keep agriculture present and strong in Cook County.

This Co-Operator publication is designed for members to share more about how Cook County Farm Bureau is working for local farmers and agriculture and to help our members know more about farming, food, fiber and biofuels. As an added value, we provide great membership deals, savings, discounts, benefits, programming and activities that reflect our agricultural heritage and members' modern expectations.

Please enjoy reading and thank you for your support of area agriculture and your membership!

# Fun On The Farm: No Matter the Season, Area Farms Offer Shopping, Recreation and Fun

By Carrie Steinweg

We're headed into the season of travel and day trips as mother nature brings on the sunshine and puts the snowflakes and harsh temperatures to bed for a few months. Agritourism plays a big part in those spring, summer and fall experiences where families can visit area farms to make lasting memories.

Cook County has a number of farms that you can visit for a variety of different reasons- from picking out your spring plantings to goat yoga to hayrides through the pumpkin patch.

At Big John's Farm Market & Greenhouse in Chicago Heights, you can stop in throughout the coming months for your flowers and produce. "In April we start with flowering plants, hanging baskets and vegetable plants and that will follow with homegrown produce and Michigan fruit and in the fall, you can buy your mums and pumpkins," said co-owner Kevin DeBoer.

Bultema's Farm in Lynwood has a market, but also is a U-pick farm, so a visit can become a fun family outing. Fields fill up with pickles, tomatoes, cucumbers, okra, eggplant and several varieties of peppers, greens and beans that you can select and pick at peak ripeness.

"We're a third-generation U-pick farm of about a hundred acres. A lot of families come to pick ingredients for their native dishes and can them to have on-hand in the off-season," said Dan Bultema, co-owner. "We also have a reputation for sweet corn and watermelons and have sold 1,000 dozen sweet corn on a given Saturday and up to 10 bins of watermelons."

Deer Creek Farm in Glenwood is a 26-acre farm where kids can interact with goats, the family can take goat hikes, and everyone can do goat yoga. The petting zoo is typically open weekends and is \$5 for ages 4 and up. The farm also offers fresh chicken and duck eggs and local honey. "We're also hoping to start U-pick flowers this year," said JoAnn Shults, who owns the farm with her husband, Wally. "Come out and spend some time being out in nature. It's good for your health and well-being."

Historic Wagner Farm in Glenview is one of the last working dairy farms in Cook County with several interactive and educational elements for kids and adults to learn about agriculture in the past and present. The Heritage Center offers interactive exhibits and historical displays and has a two-story silo kids can enter. A new Farm Adventure Area is coming later this year with a corn crib, digging sandbox and interactive life-size dairy cow sculpture.

No fall season is complete without a farm visit to Goebbert's Farm & Garden Center in South Barrington for their fall festival in September and October. Families can watch pig races, see the Pumpkin Eating Dinosaur, and enjoy seasonal treats. Happy Jack, an 18x, 15-foot fiberglass pumpkin sits atop a silo to welcome visitors.

Puckerville Farms in Lemont is another fall attraction with pumpkins and more that also operates a Christmas tree farm.

Some other area farms to visit:

A-Ranch 394, Chicago Heights (horseback rides, trail rides, onsite pony parties)

The Children's Farm at The Center, Palos Park (educational children's farm, hayrides, animals)

Delair's Corn Stalk Farm, Orland Park (pumpkins patch, haunted corn maze, craft barn)

Forest View Farms, Tinley Park (hayrides, trail rides, birthday parties, petting zoo)

From one season to the next, keep the farms of Cook County in mind for an outing, whether you're looking for a relaxing shopping trip for spring blooms or a lively outdoor fall day with active grandkids.



Carrie Steinweg is a freelance writer, author, blogger and photographer living in Chicago's south suburbs with her husband and five sons. Her work has appeared in dozens of print and online publications and she is the author of seven books. A passionate foodie, Carrie thoroughly enjoys traveling and visiting new restaurants and craft breweries, attending food festivals and trying out new recipes and kitchen gadgets. She writes about her food experiences at ChicagoFoodieSisters.com.



## Gratitude Journal

Each month, there are people that go out of their way to lend a hand to help with our cause in many ways, big and small. We appreciate it greatly!

### The Cook County Farm Bureau thanks...

- Blake Lanphier for producing a video for the Young Leader's Adopted Classroom at Walker School featuring "animals on the farm."
- The Grande family for their work in hatching chicks for our 100th year event.
- The many members that were attending our 100-Year celebration and for your understanding when we needed to postpone the event.
- Our many members who recently renewed their Farm Bureau membership for another year!
- Donors and supporters of our Annual Food Checkout Day benefit for Together We Cope and to the Chicago Northeast Country Financial Agency lead by Manager Sharon Stemke for winning the Tipping the Scale challenge.
- Our Board of Directors, staff, members, Country Financial staff and the public for being so supportive and helpful as the organization dealt with the COVID - 19 circumstances.
- Our area farmers, area health care providers, emergency personnel and police/firefighters for working so hard in recent months on the front lines.
- Our members that work in the area of IT services...so many member businesses couldn't function during this difficult time without you. Cook County Farm Bureau thanks our IT support of Isidore Group, Andromeda Technology Solutions, Imagetec LP and iMIS support team at the Illinois Farm Bureau.

## Historical Question of the Month



Women's Committee member and AITC volunteer Bernadine Horcher received what award from Illinois Farm Bureau® in 1999?

Answers (if not at the tip of your tongue) are available online at [cookcfb.org/ccfb/ourhistory](http://cookcfb.org/ccfb/ourhistory). Call the Farm Bureau at 708-354-3276, fax your answer to 708-579-6056, or email to [fbcooperator@gmail.com](mailto:fbcooperator@gmail.com) to enter the drawing for a \$25 gas card. (Please include name, FB# and phone number).

Check next month's publication for the answer and the next historical question of the month.

## Heinsohn Renews CAE Certification

Cook County Farm Bureau® staff member, Bona Heinsohn, successfully renewed her Certified Association Executive® (CAE) credential from the CAE Commission of the American Society of Association Executives®, joining more than 4,400 industry leaders worldwide.

Heinsohn completed over 75 continuing education hours in the areas of leadership, association management, finance, communication, ethics, association law, and governmental affairs. Additionally, 10 credits were in the area of qualifying leadership, authorship, and teaching activities contributing to the profession of association management.

CAEs are required to renew their certification every three years.

*The CAE Program elevates professional standards, enhances individual performance, and designates those who have acquired and have demonstrated the knowledge essential to the practice of association management. The CAE Program is accredited by the National Commission for Certifying Agencies.*

### Co-Operator

published monthly  
Cook County Farm Bureau  
6438 Joliet Road, Countryside, IL 60525  
(ph) 708-354-3276 (fax) 708-579-6056

(e-mail) [ccfb@cookcfb.org](mailto:ccfb@cookcfb.org) (website) [www.cookcfb.org](http://www.cookcfb.org)  
USPS No 132180 Periodical Postage Paid at LaGrange, IL 60525 & additional mailing office

**Editor** Bob Rohrer **Copy Analyst** Ashley Christensen **Copy Development** CCFB Office Staff

**Officers & Directors**  
Janet McCabe, President  
Michael Rauch, Vice President  
Ruth Zeldenrust, Secretary-Treasurer  
Dan Biernacki James Bloomstrand Roger Freeman  
James Gutzmer Patrick Horcher Gerald Kopping  
Todd Price Tim Stuenkel Mark Yunker

**Farm Bureau Manager**  
Bob Rohrer

**Office Staff**  
Jill Drover Bob Heine Bona Heinsohn  
Diane Merrion Juanita Ramos Melanie Senne  
Katie Smith Kelli Villarreal Debbie Voltz

**Affiliated Companies**  
Jeff Orman ..... Insurance Agency Manager, South Holland  
Victoria Nygren..... Insurance Agency Manager, Chicago North  
Jeff Maxson ..... Insurance Agency Manager, Chicago South  
Jack Smith ..... Insurance Agency Manager, Chicago Northwest  
Sharon Stemke ... Insurance Agency Manager, Chicago Northeast  
Cary Tate ..... Insurance Agency Manager, Orland Park  
John Tuttle ..... General Manager, Conserve FS  
Postmaster - Mail Form 3579 to 6438 Joliet Road, Countryside, IL 60525  
"Co-Operator" (USPS No 132180) is published monthly as a membership publication for \$2.50 per year to members as a part of their annual membership dues by Cook County Farm Bureau, 6438 Joliet Road, Countryside, IL 60525. Periodical postage paid at LaGrange, IL and additional mailing office. Postmaster: send address changes to the Co-Operator, 6438 Joliet Road, Countryside, IL 60525.

The Co-Operator, the monthly publication of the Cook County Farm Bureau®, is available to members through mail delivery, email, or by viewing online at [www.cookcfb.org](http://www.cookcfb.org). Members that wish to receive the publication solely by email can let us know by sending an email to [juanita@cookcfb.org](mailto:juanita@cookcfb.org) with the subject: E-Cooperator.



# Downwind

by Bob Rohrer, CCFB Manager

## Farm. Family. Food.™ And Virus.

We thought the 100 - year celebration of the Cook County Farm Bureau organization was a big deal until a more serious matter impacted all of us, COVID-19. We canceled the open house and made other organizational decisions to follow conventional wisdom and accommodate health and safety advice by the experts. We will still celebrate the 100 years of the Cook County Farm Bureau at some point...it is 2020 all year long.

I should dedicate a column about the coronavirus but what has not yet been said? The news, impact, and ramifications have changed by the hour, if not the minute. It's like chasing the tail of a pig...fast, always moving and quite stinky. This does seem like a "life altering" event that will impact Americans' activities in the future. There will evolve a new normal.

We will see changes in government rules and regs, new attention to healthcare service system and health safety protocols, economic ramifications that could last for years, stricter travel between countries, and more. There are new phrases in the English lexicon... social distancing, flattening the curve, virus tracker, electrostatic disinfection, acute respiratory illness, nonessential business travel, self - quarantine amongst others.

I do need to turn off the coronavirus brain for a bit and return, at least briefly, to the world of Farm, Family, Food™! Please indulge me the next few minutes to try to distract in hopefully in a more lighthearted manner.

This year's National Agriculture Week just happened to occur at the same time as our 100-year celebration was scheduled in late March. Our Farm Bureau founders were excellent planners to sync up the start date of the organization with this year's National Agriculture Week. (Our founders were dealing with the 1918-1920 Spanish Flu 100 years ago - not the kind of symmetry I imaged)

I view National Agriculture Day as a great day to celebrate in the vein of other important national holidays such as Sweetest Day, Boss's Day, April Fool's Day, and even Groundhog Day!

Put your mind to work imagining a life without agriculture. Let me help with answers in case you didn't get there yourself...

- We would be hungry (agriculture provides food)
- We would be naked (agriculture provides clothing)
- We would be cold (agriculture provides building materials for shelter)
- We would be immobile (agriculture provides ethanol fuel for our vehicles)

Without agriculture, most of us would need to become farmers rather than doing whatever occupation we're doing so we could have food, fiber, fuel, and materials. Thankfully farmers allow us to be Farm Bureau managers, accountants, nurses, teachers, marketers, scientists, entertainers, salesmen, administrators, drivers and so many other jobs and careers.

Here is a quick illustration of how agriculture was a vital part of my recent anniversary. My wife and I took a weekend trip to Galena to celebrate (I might have also been celebrating National Agriculture Day, but don't tell my wonderful wife that). We drove our vehicle fueled by farm produced ethanol to Galena. We wore clothes of cotton, wool and other farm produced fibers. We stayed in a B & B constructed of wood and other farm related natural resource products.

We dined (romantically) at the Log Cabin Steakhouse in Galena featuring meat sourced from a local farm. While staring at the menu (when I should've been staring at my wife), I debated about what amazing chunk of farm raised meat to order. The T-bone is a classic. King filet mignon could be most tender. The ribeye cut will be most favorable. The New York cut sounds worldly. Perhaps I should add a little surf to my Steak. The porterhouse advertised as "a Man's Steak" (I'm pretty much a man). So many great options for a meat lover!

My wife, after prolonged staring at me, pointed at the menu. There, in the entrée section, was a plate listed as the *Bit O'each - the Original Farm Bureau Special, a pork chop and a steak!* My mind said, "Meat with a side of Meat... Genius!"

Every day should be celebrated as National Agriculture Day (just like I celebrate my anniversary with my wife every day...see how I did that). Think of it this way, National Agriculture Day is a great day to celebrate the fact that the world doesn't have to hear me whine about being hungry and see me naked and shivering while pushing my truck with its gauge on empty. Truly a reason to be thankful!

Please stay healthy!

### Bonus food facts:

- Americans eat approximately 100 acres of pizza per day.
- We are eating 900% more broccoli today than we did 20 years ago.
- It takes 24 to 26 hours for a hen to produce an egg.
- Asparagus is a member of the lily family.
- Fresh apples float because 25% of their volume is air.
- Noodles got their start in China, not Italy.
- Bananas are 99.5% fat-free.
- 20 tart cherries per day can reduce inflammatory pain and headaches.

Bob can be reached at [brohrer@cookcfb.org](mailto:brohrer@cookcfb.org).

With the event postponed there is still time to add your name to the patio.



## CENTENNIAL LEGACY PATIO TO BE CREATED TO BENEFIT FOUNDATION

**BUILDING A COMMEMORATIVE LEGACY PATIO IN HONOR THE FIRST 100 YEARS OF CCFB SERVICE TO MEMBERS**

Creating a legacy to mark the Centennial celebration of the Cook County Farm Bureau, the Farm Bureau and Foundation are partnering to create a Commemorative Patio on the grounds of the Cook County Farm Bureau. The Commemorative Patio will be close to the east entrance of the Farm Bureau building and will feature personalized memory pavers, two park benches, a wrought iron fence, and flower boxes.

Members and Farm Bureau/Foundation supporters and partners can support the project by purchasing a paver that will be incorporated into the patio. The paver can include the member or family name, encouragement, recognition, and other well wishes.

Three sizes of paver are available and proceeds from the sale of the pavers go directly to the Cook County Farm Bureau Foundation's efforts to improve and enhance agricultural literacy in Cook County. Donation for the pavers are fully deductible per IRS guidelines. Use the order form below or go to [cookcfb.org/foundation](http://cookcfb.org/foundation) to donate.

### COOK COUNTY FARM BUREAU FOUNDATION BRICK ORDER FORM

<b>4x8</b>	<b>8x8</b>
Line 1 _____	Line 1 _____
Line 2 _____	Line 2 _____
Line 3 _____	Line 3 _____
	Line 4 _____
	Line 5 _____
	Line 6 _____

### 8X16 / BENCH

Line 1 _____
Line 2 _____
Line 3 _____
Line 4 _____
Line 5 _____
Line 6 _____

Name: \_\_\_\_\_  
 Address: \_\_\_\_\_  
 \_\_\_\_\_  
 City: \_\_\_\_\_  
 Zip Code: \_\_\_\_\_  
 Email Address: \_\_\_\_\_  
 Credit Card#: \_\_\_\_\_  
 Exp: \_\_\_\_\_ Security Code: \_\_\_\_\_

<p>4X8 BRICK - 3 LINES - 13 CHARACTERS PER LINE @ \$ 75.00 PER BRICK</p> <p>8X8 BRICK - 6 LINES - 13 CHARACTERS PER LINE @ \$150.00 PER BRICK</p> <p>8X16 BRICK - 6 LINES - 26 CHARACTERS PER LINE @ \$300.00 PER BRICK</p> <p>6 FT BENCH - 6 LINES - 26 CHARACTERS \$600.00</p> <p>PLEASE PRINT IN CAPITAL LETTERS AND CHECK FOR SPELLING ACCURACY.</p> <p>PUNCTUATIONS AND SPACES COUNT AS CHARACTERS.</p>
--

MAKE CHECKS PAYABLE TO CCFB FOUNDATION AND MAIL TO:  
KATIE SMITH - DIR. OF MEMBERSHIP & ADMINISTRATION COOK COUNTY FARM BUREAU  
6438 JOLIET RD., COUNTRYSIDE, IL 60525

## The Chicks Are Coming!

As part of our anniversary celebration, one thing that couldn't be postponed was our Chicks in Room Six project. The eggs arrived (see Photo #1), the incubator was warm and ready (see Photo #2) and the development began (see Photo #3) as seen during the first candling. With all the stress and sadness going on right now, the witnessing of new life was a welcome sight. The Grande Family graciously volunteered to take on this month-long project as part of their home schooling and we are so happy to share the progress with you. Check back next month to see a photo of the hatched chicks and know that several families have already put in offers to adopt them all. What are the stages of development? Here's a summary of what's going on in those fertilized eggs.

- Day 1 Beginning of nervous system, head, eyes
- Day 2 Heart beats
- Day 3 Nose, legs, wings begin forming
- Day 5 Reproductive organs form
- Days 6-13 Beak, feathers, scales and claws appear
- Days 14-20 Embryo gets in position suitable for breaking shell
- Day 21 Hatching of chick

Questions can be sent to [aitec@cookcfb.org](mailto:aitec@cookcfb.org) and will be passed along to the Project Managers. Check back next month to see the results.



# CCFB Foundation Scholarship Winners Announced

The Board of Directors of the Cook County Farm Bureau Foundation® has selected 12 individuals as recipients of its 2020-2021 Scholarship Program. Katherine Manika of North Riverside was awarded the Howard Paarlberg Excellence in Agriculture Scholarship.

## Howard Paarlberg Excellence in Agriculture Scholarship

This scholarship is designed to honor Mr. Howard Paarlberg, the first President of the Foundation and President of the Farm Bureau for 18 years. The recipient carries the prestige of being the top-rated applicant and a greater financial reward for the individual.

Receiving general farm and food scholarships were Alyson Doherty of Carpentersville; Aidan Walton of Westchester; Jonathon Poole of Chicago; Hannah Doherty of Carpentersville; Colleen Elzinga of Evergreen Park; Daniel Macina of Mt. Prospect; Asher Horcher of Wheeling; Jennifer Miller of Justice; Sierra Nelson of Willow Springs; Thomas Poole of Chicago; and Dane Butikofer of LaGrange.

A total of \$17,000 of scholarship funds were distributed.



**Dan Butikofer**  
University of Wisconsin-Madison



**Alyson Doherty**  
University of Alabama



**Hannah Doherty**  
University of Alabama



**Colleen Elzinga**  
University of Illinois



**Asher Horcher**  
John Marshall Law School



**Daniel Macina**  
Michigan State University



**Jennifer Miller**  
Illinois State University



**Sierra Nelson**  
University of Missouri



**Jonathon Poole**  
University of Illinois



**Thomas Poole**  
University of Illinois



**Aidan Walton**  
Illinois State University



**Katherine Manika**  
**Howard Paarlberg Award**  
St. Xavier University

The Cook County Farm Bureau Foundation was established by the Cook County Farm Bureau to carry out charitable, literary and educational work in Agriculture. The Foundation Board established the Agricultural Scholarship Program to provide financial assistance to students pursuing education for agricultural careers and to encourage the best and brightest young minds to return to Agriculture as their chosen career.

## 5 Things Members Should Know About Cook County Farm Bureau® Foundation...

1. The Foundation was started 33 years ago to help fund agricultural literacy in Cook County.
2. The Foundation gratefully accepts tax deductible donations from members, agribusiness and other entities to help expand programming and efforts in the area of agricultural literacy.
3. The Foundation started a scholarship program in 1999 for members and member dependents seeking agriculturally related careers. It has provided 172 scholarships and \$256,000 in support of members higher education needs since that time.
4. The Foundation sponsors a number of Ag Literacy programs during the year that help teach kids about where their food comes from, who produces food, fiber and fuel, and various careers related to agriculture.
5. Nearly 100% of the donations and contributions provided to the Foundation go directly toward the mission of enhancing agriculture literacy.

## Announcing Everyday Agriculture Lessons!

With schools closed due to the coronavirus and students, teachers and parents seeking online experiences, Illinois Ag in the Classroom has stepped up with online programming. Introducing Everyday Agriculture lessons found at <https://bit.ly/3a4rmho> rolled out by Illinois Ag in the Classroom on March 17, 2020.

The Cook County Farm Bureau Facebook posts and website (<https://bit.ly/3dfUowe>) will share all of these fun activities, lessons and resources. While you are there, check out additional links you can use at home or in the classroom. We also offer encourage you to visit the Activities for Kids page (<https://bit.ly/2IZHaGe>) that includes My American Farm games, a Family Adventures Page and this month's bookmark contest.

Keep engaged by exploring the world of agriculture.

# WHERE ARE THEY NOW?



## ALYSSA VOLLAND

Scholarship Recipient

**Education/Degree:** University of Illinois Urbana-Champaign/Bachelor's degree in Animal Sciences - Master's Degree in Animal Sciences with a focus on gut microbiology

**Current Role:** Works at Elanco Animal Health in Greenfield, IN as a Senior Research Associate. Works in a lab with various species of bacteria. Hopes to create targeted, rational probiotics to feed livestock and improve their well-being. Elanco believes that gut health is critical to overall animal health, and aims to create a healthier animal by using bacteria to alter the microbiome. The microbiome includes the bacteria, fungi, protozoa, and viruses living inside and outside of the body.

**Why Agriculture:** I picked agriculture, specialty animal sciences, because I wanted to positively influence people through their animal connections. I was originally drawn to the companion animal field, but I quickly became passionate about food animal health. Animal products are a crucial part of our food supply, and I want to contribute to both a healthy animal and a safe, abundant protein source.



## Your South Holland Agency



**Jeff Orman**  
Agency Manager  
708-560-7777



**Andrew Carrell**  
South Holland  
708-596-3999



**Jim Verduin**  
South Holland  
708-596-0008



**Randall Cox**  
Flossmoor  
708-679-1870



**Elliot Day**  
Flossmoor  
708-679-1870



**Gary Molenhouse**  
Manhattan  
815-478-0190



**Josh Van Namen**  
Worth  
708-361-3925



**Jim Pathemore**  
Orland Park  
708-745-5151



**Tim Perchinski**  
Steger  
708-754-7300



**Bob Smith**  
Homewood  
708-798-4844



**Paul Turay**  
Mokena  
708-478-0423



**John VanGennep**  
Mokena  
708-478-5500



**Bob Deenik**  
Lansing  
708-474-5600



**Tim Van Zuidam**  
St. John, IN  
219-365-1781



**Mike Cerf**  
Oak Forest  
708-560-7777



**Charmaine Toney-Adkins**  
Oak Forest  
708-381-4010



**John Tymn**  
Worth  
708-480-5091



**Chad Christie**  
Oak Forest  
708-560-7777

Helping you protect what matters most

# Cook County Farm Bureau® and Partners Raise Cash and Food Donations for Local Food Pantry

Together with partners, Cook County Farm Bureau® donated much needed food staples to Together We Cope. The donations directly benefit the 5,000 people in four Cook County townships who rely on the food pantry monthly.

Donations were raised in celebration of Food Checkout Day which celebrates the healthy and nutritious food local farmers grow and raise by providing food or cash donations to people in need.

“Cook County and Illinois farmers are committed to growing safe and nutritious food for our families and for others,” said Janet McCabe, President of Cook County Farm Bureau. “Food Checkout Day allows us to recognize the importance of healthy, nutritious food while supporting local families in need.”

For the past 19 years, Cook County Farm Bureau has partnered with Ronald McDonald House Charities® of Chicagoland and Northwest Indiana. Through the generosity of partners for nearly two decades, Farm Bureau donated over \$145,000 and nearly 100,000 pounds of food.

In celebration of Food Checkout Day and the nutritious food local farmers grow and raise, Cook County elementary school students collected dimes as part of “Dimes for Dairy”. All donations raised by the students were used to purchase dairy products for the families who rely on Together We Cope’s services. In celebration of Cook County Farm Bureau’s 100th anniversary, donations up to \$100 were matched by Cook County Farm Bureau. Farm Bureau in conjunction with elementary school students and Prairie Farms Dairy will donate over \$3,800 for the purchase of dairy products.

**‘Dimes for Dairy’ participants:**

Fulton Elementary School, Tinley Park Chicago Washington High School, Chicago

Lavizzo Elementary School, Chicago St. John Fisher School, Chicago

St. Germaine School, Oak Lawn

**Country Financial agencies collecting food and cash donations:**

Chicago North Country Financial Chicago Northeast Country Financial

Chicago Northwest Country Financial Chicago South Country Financial

Orland Park Country Financial South Holland Country Financial

**Food Checkout Day partners and sponsors:**

Meijer, Orland Park Prairie Farms Dairy

Chicago Northeast Country Financial Jim and Karen Gutzmer

Malgorzata Jura Kopping Farms

Joe and Janet McCabe Orland Park Country Financial

Robert and Jayne Rohrer Tim Stuenkel

Ted’s Greenhouse

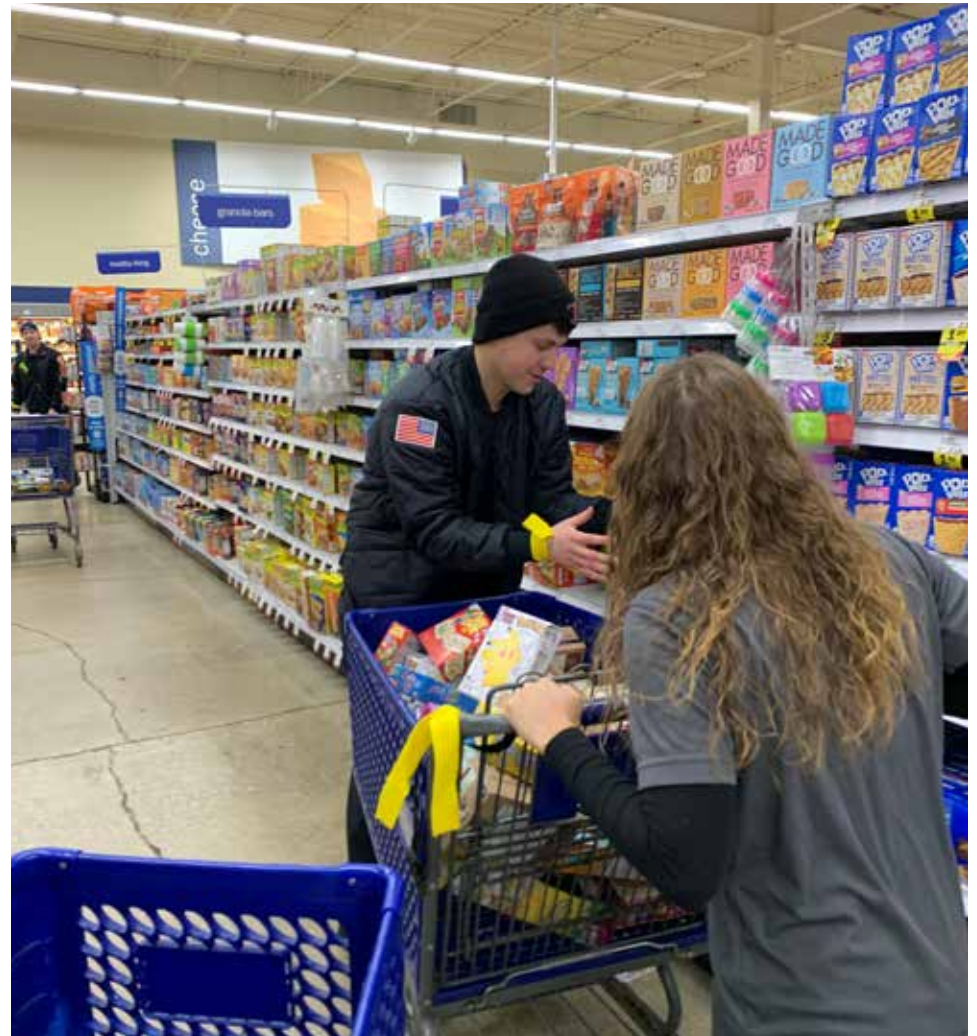
As part of Food Checkout Day, Farm Bureau sponsored a scavenger hunt at Meijer in Orland Park between representatives from the Oak Forest, Tinley Park, and Palos Park Fire Departments at Meijer. All food items were purchased by the Farm Bureau and donated to Together We Cope.

Partners, shoppers, and Farm Bureau members donated nearly \$7,000 to the charity and over 1,000 pounds of food staples.

In 2012, Food Checkout Day was named a Summit Award winner by the American Society of Association Executives. The Summit Award recognizes the positive impact that non-profit associations have on their community.

Together We Cope serves 27 south suburban communities, including Alsip, Blue Island, Bridgeview, Chicago Ridge, Country Club Hills, Crestwood, Evergreen Park, Garden Homes, Harvey, Hazel Crest, Hickory Hills, Hometown, Homewood, Markham, Merrionette Park, Midlothian, Oak Forest, Oak Lawn, Orland Hills, Orland Park, Palos Heights, Palos Hills, Palos Park, Posen, Robbins, Tinley Park, and Worth, in four townships, Bremen, Orland, Palos, and Worth. Together We Cope based in Tinley Park, serves 5,000 people monthly.

As the county’s largest general farm organization, Cook County Farm Bureau is dedicated to bridging the gap between farmers and urban consumers. Through education programs targeting youth and their parents and programs designed to connect farmers with potential consumers, Farm Bureau members are actively engaging in conversations about food and the shared values between farmers and consumers.



Firefighters from Tinley Park collected all 200 items to claim victory in this year’s Food Checkout Day Scavenger Hunt.



Tinley Park, Palos, and Oak Forest Fire Departments joined Cook County Farm Bureau® members and partners in a Scavenger Hunt to raise food staples for Together We Cope, a local food pantry serving 27 south suburban municipalities in four townships as part of Food Checkout Day. Food Checkout Day celebrates the healthy and nutritious food grown and raised by local farmers.

## Your Orland Park Agency

 <b>Cary Tate</b> 708-226-1111 Agency Manager Orland Park, IL	 <b>Piero Setta</b> 708-226-0431 7601 W. 191st St Tinley Park, IL	 <b>Jim Andresen</b> 708-633-6490 17605 S Oak Park Ave Tinley Park, IL	 <b>Thomas Geraghty</b> 708-425-9700 5003 W 95th St Oak Lawn, IL	 <b>Mark Wright</b> 708-403-2416 7601 W. 191st St Tinley Park, IL
 <b>George Parthemore</b> 708-226-1896 9432 W 143rd St Orland Park, IL	 <b>Mike Skrabis</b> 708-226-1666 9731 W 165th St Orland Park, IL	 <b>Tony Palumbo</b> 708-403-5708 7601 W. 191st St Tinley Park, IL	 <b>Mike Spadoni</b> 708-425-1825 3923 W. 95th St Evergreen Park, IL	 <b>Bob Johnson</b> 708-429-9422 17605 S Oak Park Ave Tinley Park, IL
 <b>Dan Stumpf</b> 708-614-1688 17605 S Oak Park Ave Tinley Park, IL	 <b>Bill Thompson</b> 708-361-1304 106 Stephen St Lemont, IL	 <b>Nora Beverly</b> 708-429-7789 1938 Lincoln Highway New Lenox, IL	 <b>Brian Zielinski</b> 630-257-6100 106 Stephen St Lemont, IL	 <b>Nick Burke</b> 708-425-1816 3923 W. 95th St Evergreen Park, IL
 <b>Mike Thauer</b> 708-425-1559 3923 W. 95th St Evergreen Park, IL	 <b>Erica Storrs-Gray</b> 708-671-1465 12130 S Harlem Ave Palos Heights, IL	 <b>Terry LaMastus</b> 708-754-5900 3308 Chicago Rd Steger, IL	 <b>Joe Voves</b> 708-425-1527 3923 W. 95th St Evergreen Park, IL	



**9731 W 165th St Suite 36 Orland Park, IL 60467**  
**708-226-1111**

1218-509HO



# Agricultural Literacy

AG LIT BIT

*A Changing World this Earth Day*



*Diane Merrion, CCFB Director of Ag Literacy*

A few months ago, I wrote about not understanding something unless you've experienced it. Unfortunately, we have a whole new generation experiencing something that none of us have experienced but will most certainly always remember.

Last week we were doing an Earth Day workshop here at the farm bureau and talking about being good stewards of the earth and exploring how we got to where we are today with the challenges facing the environment.

I've got to say that experience does change habits which brings me back to my childhood and reflecting on the habits of my grandparents. Why did they clean, fold and reuse the foil, the wax paper, the bags? Why did they move the geraniums from the yard and store them in the basement all winter and replant them the next spring? Why did they work so hard on their vegetable garden and can the leftovers?

They didn't need Earth Day as a reminder to be stewards of the land. Nothing was wasted. They lived through

hard times that created their habits and it appears that we may be living through times that will ultimately change our habits.

"Every Day is Earth Day on the Farm" is quoted on this year's t-shirts, developed by Illinois Ag in the Classroom in honor of the 50th anniversary of Earth Day. This Earth Day (April 22nd) and every day we thank the farmers whose chosen work is providing us with food to sustain us during this crisis.

Not knowing what tomorrow will bring, I'm looking forward to April sunshine, the sounds of birds, the smell of growing grass and most of all, new experiences with family and friends.

*Diane can be reached at [aite@cookcfb.org](mailto:aite@cookcfb.org).*



# Job Shadows Continue



*Chicago High School for Ag Sciences students Lilly Voves, Jada Ross, Zenaida Rivera, and Patrick O'Connell*

- How do Agriculture in the Classroom resources fit into school curriculums?
- How do you prepare a one-hour lesson as a guest speaker in a class?
- How do you adapt the program to different ages?

These were some of the many questions four high school students asked as they shadowed our 4th grade "There's Ag on MyPlate" presentations at Stony Creek School in Alsip. The one-hour program walked students through a lively discussion and activities using the USDA MyPlate® as a reminder to select healthy foods and a balance of fruits, vegetables, grains, protein, and some dairy each day. AITC Presenter Toni DeLaurentis received help from The Chicago High School for Ag Sciences students teaching the younger children how to read labels, analyze their food logs, and determine the sugar levels in common drink choices.

If your organization is involved in any aspect of the agriculture industry in Cook County and would like offer job shadow experiences, please reach out to Diane Merrion at [aite@cookcfb.org](mailto:aite@cookcfb.org).

# Water, Soil, and More Explored



*Our last teacher workshop of the school year featured activities for educators to use during Earth Day on April 22nd. The evening featured discussion and debate on plastic vs. aluminum, examination of corn-based plastic (renewable vs. nonrenewable), and many lessons to use back in the classroom such as A Tree's Life, What Do Trees Give Us, Garbage Pizza, Slice of Planet Earth, and the ever popular, Soil Sammie. Our thanks to the teachers who attended our workshop series this year. Check back with us in the fall to see our dates/times for next year's programming.*



# COOK COUNTY FARM BUREAU® FOUNDATION 2020 BOOKMARK CONTEST

## "THANK YOU FARMERS FOR 100 YEARS"

In celebration of our 100th anniversary, design a bookmark illustrating how the hard work of farmers affects our lives each day. Whether it's enjoying a glass of milk from a cow, eating apples from a local grower, wearing clothes made from cotton, eating cereal made with wheat or reading a newspaper printed using soy ink. Show us how farmers impact our lives. Enter our bookmark contest (up to age 12) and children everywhere will be using it in libraries and classrooms throughout Cook County.

A First Place winner and three runners up will be selected. The First Place winner will receive a \$40 Amazon gift card, Runner Up winners will receive a \$20 Amazon gift card. The winning bookmarks will be duplicated for distribution this summer at local libraries and park district events hosted by the Cook County Farm Bureau.

Entries must be received by 5/1/20 via email or mail. Judging will be completed by 5/15/20

Mail entries to: Cook County Farm Bureau Foundation Bookmark Contest,  
6438 Joliet Rd, Countryside, IL 60525  
Email entries to: [aite@cookcfb.org](mailto:aite@cookcfb.org) – Subject: Bookmark Contest

**\*Please print carefully**

Participant's Name: \_\_\_\_\_ Age: \_\_\_\_\_

Address: \_\_\_\_\_ City: \_\_\_\_\_ Zip: \_\_\_\_\_

Contact Phone no. \_\_\_\_\_ Email Address: \_\_\_\_\_

Parent's Name: \_\_\_\_\_

\*By submitting your bookmark artwork to this contest, you give the CCFB the right to reprint and distribute your bookmark design at local events hosted by the CCFB.

*Use the template below or use the same measurements on a white sheet of paper: Size is 7½" x 2 ½"*

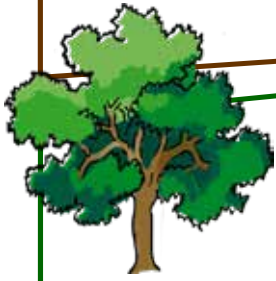


# Agriculture Adventure for Families



This month we give thanks to the many people in the world who are heroes for giving of themselves for the benefit of others. Earth Day falls on April 22<sup>nd</sup> so this month we want to celebrate something else that helps to sustain our lives: Trees. Take a moment to enjoy our look at how much we get from the trees around us. Besides giving us oxygen, they improve soil quality, air quality and quality of life such as reducing stress.

Trees are wonderful organisms from which we derive many beneficial products. Most people are aware that lumber is made from trees. But did you know there are hundreds of other tree products, too? These products come from every part of a tree. Many tree products are made of cellulose, or cellulose in combination with other products. Cellulose is a substance that comprises the cell walls of plant cells and is the major component of wood.



When we speak of tree products, we may get the idea that a product is something that must be sold. However, trees provide important benefits which do not have an associated cost, such as producing oxygen, improving air and water quality, providing watershed protection, supplying wildlife habitat and offering recreational opportunities. Trees growing as forests provide many recreational benefits, including hiking, horseback riding, camping, fishing, hunting and picnicking. Trees produce shade. Properly planted, trees can help lower air conditioning costs in the summer. Trees can act as barriers to wind, blocking cooling effects in winter and helping to stop erosion. The beauty provided by trees in all seasons of the year is priceless.



What tree would be complete without a feeder to start attracting the birds as they head back this spring? Using any supplies you have at home, challenge yourself (or your neighbors or children) to designing the best feeder. Bird feeding is most helpful at times of when birds need the most energy, such as during temperature extremes, migration, and in late winter or early spring, when natural seed sources are depleted. If you are able to get bird seed, go ahead and fill it up. If not consider offering small amounts of fruit, crushed eggshells or even nesting materials, such as hair, small pieces of string or yarn, and small strips of cloth to help nesting birds.

<http://www.greatstems.com/2013/05/wildlife-projects-for-kids-milk-jug-bird-feeders.html>



Source: <https://dnr2.illinois.gov/teachkids/>



If the opportunity presents itself this month, head outdoors and see if you can spot some trees and tree parts explained in **I Can Name 50 Trees Today!: All About Trees**. Be sure to look beyond the cover of this perfect book for readers of all ages. While stopping to admire some of the world's most amazing trees, the Cat and Co. teach beginning readers how to identify different species from the shape of their crowns, leaves, lobes, seeds, bark, and fruit. Kids will learn about many trees common to North America.

Choose your prize:

Choices include a \$25 Beggar's Pizza Gift Card, a \$25 Home Run Inn Gift Card, OR \*3 AMC Movie Tickets \*AMC Yellow tickets not valid in California, New York & New Jersey.

Complete the Word Search puzzle for your chance to win! Winners will be contacted by mail.

Mail to: Cook Co. Farm Bureau  
Ag Adventures Word Search  
6438 Joliet Rd  
Countryside, IL 60525  
Fax to: 708-579-6056  
Email to: FBcooperator@gmail.com

Complete and submit an entry every month all in 2020 and your name is automatically entered into an "End of Year" drawing for a gift basket full of ag themed goodies. Good luck!

Last Month's Word Search Winner Is...

**Thomas Nordbrock**

## April Word Search

- |                  |                |
|------------------|----------------|
| <b>Air</b>       | <b>Oxygen</b>  |
| <b>Apple</b>     | <b>Plant</b>   |
| <b>Barriers</b>  | <b>Product</b> |
| <b>Cellulose</b> | <b>Seasons</b> |
| <b>Erosion</b>   | <b>Shampoo</b> |
| <b>Gum</b>       | <b>Tree</b>    |
| <b>Hiking</b>    | <b>Water</b>   |
| <b>Lumber</b>    | <b>Wood</b>    |

Name: \_\_\_\_\_

Phone #: \_\_\_\_\_

Membership #: \_\_\_\_\_

(Membership # is located on front of paper)

If you were to win, check your preference:

\_\_\_ Beggar's Pizza GC \_\_\_ HRI GC \_\_\_ 3 Movie Tix  
(If a choice is not made, movie tickets will be sent)

Deadline is the 20th of each month.

R W W T P E Y P A A N S A E Z  
I E R A L R S C B F E E Y S L  
R E B P T H O S Q A G A J O L  
E X P M A E R D P U Y S M L G  
U A M M U E R W U Y X O X U T  
H J P B I L R I A C O N H L G  
C O P R G N I K I H T S I L Q  
O R R P L A N T I C Z F N E O  
O A S N E F N C V G N Z Q C M  
B C Q T N E Z L N G V R T G G  
N V Y H I E G V W N G H Z G R  
D I A G G U J D O V N H R V A  
J Y R T Q B W T O G L B O X H  
H O Y O R E D Y D W W P G H X  
V X K O F X B R E R O S I O N



## Farm Stewardship Celebrated on Earth Day

Every April after an evening mushroom hunt in the timber, the sunset's glow across the home farm triggers a connective feeling to the land that I struggle to describe.

It's that connection developed while working side-by-side with my family on land improvement efforts. The passion strengthens at harvest, when we gather the land's bounty. The kids express the feeling when they request to fish and canoe the river that borders the farm.

This April marks the 50th anniversary of Earth Day. It seems fitting that the world celebrates this day April 22, a time when (weather-willing) Illinois farmers work with the land and Mother Nature to plant from sunrise to sunset. I compare this day to Mother's or Father's Day, an official date to formally honor an everyday commitment, in this case to environmental stewardship.

Because in the 364 days preceding Earth Day, we appreciated and cared for the land with the same ambition. Solar arrays helped produce the energy that powers our home farmstead and grain facility. My family installed or maintained grass waterways, buffer strips and terraces in fields to protect the soil and filter water that moves across the land. Sensitive lands transitioned to

wildlife habitat. Reduced tillage and often no tillage at all make the land less vulnerable to soil and nutrient loss.

Agronomists help us follow the 4Rs, choosing the "right" fertilizer at the "right" rate, the "right" time, and in the "right" place on our farm's varying soil types. Technology in our tractors use global-positioning satellites for precise applications and operations. This reduces use of fuel and pesticides and maximizes use of seed and fertilizer in science-proven ways never available to my grandpa's generation.

In the house, we recycle eligible plastics, metals, and papers. The kids and I pick up trash in country ditches, where we more often mow around milkweeds, the food source for monarch butterflies. Deer, raccoons, and even a growing population of bald eagles co-exist with the farm, too.

On Earth Day, as every day, farm families like ours feel an obligation to keep the land in as good or better condition for the next generation of caretakers. I hope they find the sunsets on the land just as magnificent.

*About the author: Joanie Stiers' family grows corn, soybeans and hay and raises beef cattle and backyard chickens in West-Central Illinois.*

## Family Farm and Food Bytes

**CORONAVIRUS PANDEMIC TRIGGERS MAJOR SHIFT IN BUYING PATTERNS (FarmWeekNow)** – Buying patterns for food and household items shifted dramatically since the second week of March, when states around the nation implemented isolation and social distancing measures in response to the coronavirus pandemic. Grocery aisles containing everything from meat and paper products to bottled water were decimated by a frenzy of buying activity. Retailers implemented practices such as reduced hours and purchase limits for key items to allow for restocking and to limit hoarding.

**SAFETY ASPECTS OF INDOOR FARMING SIGNAL A CHANGE IN AGRICULTURE (Food Safety News)** – An indoor agricultural evolution is in the making. That's how some people see the surge of interest in growing leafy greens in greenhouses. This approach to farming has increased dramatically in every corner of the country.

**THE MILK SITUATION (New York Times)** – The question on dairy farmers' minds these days is not whether anyone's got milk. It's how to sell it. Since 1975, milk consumption per capita has dipped roughly 40 percent, according to data from Nielsen, and between 2010 and 2018, sales of milk dropped by 13 percent. Dairy farmers are now pivoting to nondairy products, opening their farms to tourism and finding new ways to market in the hopes of bringing back the milk mustache.

**USDA'S SUPPORT SQUAD FOR NEW FARMERS (Politico)** – USDA is launching a team of staff to assist beginning farmers and ranchers, who account for a quarter of all agricultural producers but often face major obstacles when booting up their farm operations. The team will spearhead USDA's efforts to boost farmers and ranchers as they try to break into the industry.

**CHINA PAVES WAY FOR IMPORTS OF U.S. DISTILLERS' GRAINS (Agri-Pulse)** – China is paving the way for an eventual reopening of its market to U.S. dried distillers grains by announcing a list of U.S. companies that are eligible to export the product, according to documents and sources.

**FOOD PRICES REMAIN STABLE AS BUYING HABITS CHANGE (FarmWeek)** – The number of outlets where Americans purchase food increased substantially in recent years. But one thing that's remained fairly constant involves the price consumers pay for their food. The average price of all food last year increased just 1.9% nationwide, according to Gianna Short, USDA Economic Research Service Food Markets Branch. In fact, the price of food consumed at home barely changed at all, with a slight uptick of just .9% last year, while the price of food away from home increased 3.1%.

This year, USDA projects a slight increase in the price of food at home (.5 to 1.5%) and 2 to 3% higher prices for food away from home. One of the largest price increases last year was for fresh vegetables (up 3.8%), while the largest price decline (10%) was for eggs.

Until recently, people generally shopped at one primary store. Now, Americans visit an average of 4.4 different retailers for groceries each month. One relatively new form of food purchases, online shopping, increased in recent years. But it actually hasn't reduced the number of trips to stores by consumers. They tend to make more specialized purchases at a variety of locations.

What about the effect on meat sales of growing alternative protein options? Early indications suggest alternative meat products tend not to be a replacement as much as an addition to the food basket. It doesn't look like it will drive down red meat consumption.

**PRITZKER APPOINTS NEW AGRICULTURE DIRECTOR (Daily Herald)** – Gov. J.B. Pritzker last month appointed former state Rep. Jerry Costello II as the next director of the Illinois Department of Agriculture. Costello, a Democrat from southern Illinois, served nearly eight years in the General Assembly from 2011 to 2019. During that time, he chaired the House Agriculture and Conservation Committee and was a member of the House Environment Committee.

**HEMP FARMERS CROP BEING STOLEN AND MISTAKEN FOR MARIJUANA (The 21st Show)** – Demarkius Medley grows hemp on a small farm in Galesburg. Like many farmers, this was his first year growing the crop after it was legalized under the 2018 Farm Bill. The growing was going relatively smoothly until he started to notice some crops were disappearing. Upon setting up a camera, Medley determined it was people, not deer, sneaking onto his property and stealing the hemp plants.

**U.S. UNDER PRESSURE TO KEEP SLAUGHTERHOUSES OPEN DURING VIRUS OUTBREAK (Reuters)** – The U.S. Department of Agriculture is seeking to reassure meat producers it will keep slaughterhouses staffed with federal inspectors as fears about potential shutdowns due to the new coronavirus hammer livestock prices and fuel concerns about food supplies, meat industry groups said on Monday.

*About Family Farm and Food Bytes: This is a collection of articles gathered from both mainstream and agriculture media and is designed to keep you informed as a member and leader within the Cook County Farm Bureau® organization. The articles summarized above are not intended to represent Cook County Farm Bureau policy or positions, but rather to provide members an idea of what is being reported regionally, nationally, and globally.*

**Lucky's ENERGY SERVICE**

**We offer wet hosing, bulk tank fills and package lubricants – D.E.F, Oil, Hydraulic, Diesel and Gas for all your needs.**

**We are a 24/7 Fuel Supplier servicing Illinois – Wisconsin – Indiana**

**Call us today at 847-994-3010 or visit us online at [www.luckysenergy.com](http://www.luckysenergy.com)**

**Growing To Serve You Better**

## Earth Day: Interesting facts

- Over the last 60 years, Illinois farms have more than doubled production (102%) while using 11% less land. (USDA National Agricultural Statistics Service Survey)
- Farmland acres covered by cover crops over the winter in Illinois more than doubled (123%) between 2012 and 2017. (USDA Ag Census)
- Solar projects on Illinois farms nearly tripled between 2012 and 2017. (USDA Ag Census)
- 72% of Illinois farmland acres are no-till and reduced-till, while 28% of Illinois farmland acres are conventional-till. This is a 9.5% increase in no-till and reduced tillage practices since 2012. (USDA Ag Census)
- There are about 27 million acres of farmland in Illinois. (USDA Ag Census)



# Get to Know Your Local Official: County Board

## Primary Duties

The Illinois Constitution mandates that a county board be elected in each county.

The county board is both the legislative and executive branch of county government. As a legislative body, the board enacts ordinances and resolutions that can apply to the county as a region, including the cities within it, or specifically to the unincorporated area of the county.

As an executive body, the board administers the activities of county departments and offices, except those headed by the other elected county officials.

As the governing body, the county board adopts an annual budget for the county, establishes tax rates and authorizes bond issues, subject to voter approval.

In a quasi-judicial role, the board reviews zoning, planning and land use matters and considers appeals in granting or denying certain permits and licenses.

The county board is also empowered to establish and control special districts to provide services in unincorporated areas of the county.

Most county boards are organized into committees with members appointed by the chairman.

Some of the more standard committees include:

- Zoning and Building Committee recommends and enforces the county's zoning ordinances and regulations.
- Legislative Committee is responsible for monitoring, reviewing and recommending positions on state and federal legislation impacting local governments.
- Transportation Committee reviews all matters that involve the construction of county highways. It considers and makes recommendations relating to the maintenance and improvement of public road and bridge systems.

## Major functions of county boards and commissions

Counties' governmental and service functions are broken into two broad categories: (1) functions that are mandated by state law or constitution, and (2) optional, or discretionary, functions that counties may choose to perform or not to perform.

Mandatory Functions:

- Hold meetings at prescribed times and publish a report of each meeting.
- Adopt an annual budget that appropriates funds to cover expenditures for various county offices and functions. Included in the overall budgeting responsibility is the obligation to prepare an annual financial report.
- Evaluate all claims made on county funds and prosecute or defend lawsuits

brought by or against the county and any officers thereof. In the event that a lawsuit results in a judgment against the county or one of its officers, the board or commission is responsible for paying any damage awarded by the court.

Discretionary Functions:

- Have broad discretionary authority in the area of public and environmental health and safety. The county board may act as a board of health or establish a health department; provide for various emergency services; make available clinics, hospitals and shelters; and engage in environmental health activities.
- May engage in land use planning and zoning, including participating in regional planning, and may regulate in the area of building and safety codes, building permits, and subdivisions regulations.
- May provides social services, including making grants to community action agencies and providing services for youth, the aging, the mentally deficient, and neglected or delinquent children. Many counties in Illinois have provided funding to establish veterans' assistance agencies.



Cook County Commissioners and President Toni Preckwinkle pose together for the 2018-2022 Board photo. Back row, pictured left to right: Commissioner Larry Sufferdin, Commissioner Scott Britton, Commissioner Alma Anaya, Commissioner Bridget Gainer, President Toni Preckwinkle, Commissioner Deborah Sims, Commissioner Bridget Degan, Commissioner Donna Miller, Commissioner Stanley Moore, and Commissioner Peter Silvestri. Seated, pictured left to right: Commissioner Brandon Johnson, Commissioner Kevin Morrison, Commissioner Dennis Deer, Commissioner John Daley, Commissioner Luis Arroyo, Commissioner Sean Morrison, Commissioner Bill Lowry and Commissioner Jeffrey Tobolski (resigned in March, 2020).

## Farm Bureau Strives to Protect Working Animals

Cook County Farm Bureau® in partnership with the Horsemen's Council of Illinois drafted and introduced legislation to create the Local Working Animal Protection Act to ensure individuals the opportunity to use animals such as horses.

The Act defines "working animal" and provides that the right to utilize working animals for the benefit and welfare of the animals or those they serve is guaranteed.

It Provides that no ordinance or rule shall be enacted by a unit of local government, including a home rule unit, that terminates, bans, effectively bans, or creates an undue financial hardship relating to the job or use of working animals or animal enterprise in commerce, service, legal hunting, agriculture, husbandry, transportation, or ranching, including, but not limited to, entertainment, education, or exhibition.

The proposed changes do not alter state law or rules that regulate animal care, public health, or public safety; or prevent the establishment of or alteration of ordinances or rules by a unit of local government regarding animal care, public health, or public safety.

House Bill 4123 is currently referred to the House Cities and Villages Committee. Farm Bureau is engaging with legislators to educate them on this issue and to advocate for its eventual passage.

## Grassroots Policy Process at Work

In response to a recent member survey, Cook County Farm Bureau® is drafting resolutions limiting the compensation of public officials.

In regard to compensation of public officials, the resolution provides that we support legislators only receiving compensation for the days they are in office. Current law allows for lawmakers to receive a full month salary even if they resign their seat on the first day of the month.

Regarding legislative bodies, the resolution supports prohibiting lawmakers from concurrently serving as an elected official and a paid lobbyist. In Illinois, it's legal for an elected official to be a paid lobbyist if they aren't lobbying the same branch of government they're elected to represent.

Members are encouraged to contact Bona Heinsohn at 708-354-3276 if they have any questions or concerns.



By Bona Heinsohn, CCFB Director of Gov. Affairs and Public Relations

## Manifolds, Manolos, and Manure

There's a Facebook meme roaming around social media that says, "Some women want a man who can hold their purse, I want a man who can hold my 1,200-pound fire breathing dragon and lead it down the alley". If you're not around horses, specifically around barrel racers, this meme might not make sense.

I have a big, red, furry 1,200-pound fire breathing dragon also known as an American Quarter Horse. He's a defunct hunter/jumper who gets hot and bothered on ground poles. After 15 months he's just starting to hit his stride as a performance horse and barrel racer.

Our first year as a team was less than glorious. We'd turn barrel one then blow by barrel two. The humans of the group would spend the next couple of hours trying to figure out why. Was he stubborn? In pain? Spooked? Lazy?

Speaking of spooky. He spooks at the sight of

water. He goes out of his way to avoid walking near standing water. This fall he tried to jump a creek and landed smack dab in the middle of it. Chest high in flowing water in the middle of November. It was lovely. And cold.

My big, red beast has very tender skin. He marks up if you look at him too long. Then his fur takes six months to grow back. Don't even get me started on his lack of a mane or his thin tail. The research says to add omega three and omega six to increase skin and hoof health and we have with some luck.

I've studied feed tags, supplements, and articles. I've listened to my veterinarian and farrier; with their help we've built him a ration that provides extra for his hooves and coat while ensuring that he remains healthy and well fed. We've added an injectable joint supplement and chia seeds for his coat.

I know that animals need proper care, food, and water to be productive. This translates to horses. In Chicago, activist groups are labeling

horse carriage operators and the entire industry as abusive, inhumane, and outdated. While individuals are entitled to different opinions, there is no evidence that carriage horses are mistreated. Chicago's carriage horses have access to food, water, and shelter. They work a six-hour workday in comfortable conditions. I can pull the carriages that the horses pull in Chicago. My closest friend and I can pull the carriages loaded. They're not heavy, they're made to be easily pulled.

Activist groups also argue that cities aren't the place for horses because of the traffic and noise. Through scrupulous training and handling, carriage horses are comfortable in loud, urban areas. The horses' owners wouldn't bring an untrained and a poorly acclimated horse into the city.

Horses built Chicago. Horses have an inherent drive to work. Even my big red gelding has a drive to work. It's shameful that horse carriages may become a thing of Chicago's past.

Bona can be reached at [bona@cookcfb.org](mailto:bona@cookcfb.org).

Car Rental Discounts



Beach vacation or business trip? Whether you're working or playing, it's easy to rent a car for your travels and your Illinois Farm Bureau membership makes it affordable, too. Receive 5% off with Enterprise.

Receive a member discount on everyday low rates from Enterprise. Call 1-800-RENT-A-CAR, or visit [enterprise.com/ilfb](http://enterprise.com/ilfb) and use your Customer identification number ILFARM.



Receive up to 20% off on your next car rental from Alamo. With the Alamo self-service kiosk, you can skip the counter, choose your car and go, saving time and money. Call 1-800-462-5266, or visit [alamo.com/offer/ilfb](http://alamo.com/offer/ilfb) and use your Contract identification number #421770.



Save up to 20% off when you choose National Car Rental. National is one of the nation's largest rental car companies, serving the most popular domestic and international travel destinations. Call 1-800-CAR-RENT, or visit [nationalcar.com/offer/ilfb](http://nationalcar.com/offer/ilfb) and use your Contract identification number #5706352.

Don't forget to take advantage of our discounted car wash tickets listed below...



- Delta Sonic Car Wash Tickets**
- Super Kiss \$11.50
  - Basic Touchless \$8.00
  - Super Interior (larger vehicles) \$16.00
  - Super Interior (smaller vehicles) \$14.50



Tickets can be purchased directly from our office located at 6438 Joliet Rd in Countryside or you can order tickets over the phone using a Visa, MasterCard, or Discover credit card and tickets will be mailed to you free of charge.

ONE STOP SAVINGS

Internet Browser

#1: Go to your internet browser and type in: <https://ilfb.abenity.com>

#2: The home page looks like this:



- #3: You will be asked to:
- A) **Sign In** (Type in your username and your membership number which can be found on your card.)
  - B) **Register** (new users-you will need to fill out the fields to register your new username and password. You will need your membership number which can be found on your card.)

Android

#1: Go to the Google Play Store  
Search for: "Abenity"  
The App looks like this:  
Select: Install



#2: Once the app is installed, select "Open"

#3: You will be asked to:

- A) **Sign In** (you will be asked to sign in if you have an abenity login) Type in your user name and your membership number which can be found on your card.



- B) **Register** (new users - you will need to go to the web site to register. See Internet Browser to the right. You will need your membership number which can be found on your card.)



#4: Once you are in, you will see the "Getting Started" page. Select the "Start Saving" option.



#5: The home page shows you savings offers. To view all 14 categories, select the three black bars in the upper left corner.

iPhone

#1: Go to the App Store  
Search for: "Illinois Farm Bureau Member Benefits"  
The App looks like this:  
Select: Install



#2: Once the app is installed, select "Open"

#3: You will be asked to:

- A) **Sign In** (you will be asked to sign in if you have an abenity login) Type in your username and your membership number which can be found on your card.



- B) **Register** (new users-you will need to fill out the fields to register your new username and password. You will need your membership number which can be found on your card.)



#4: Once you are in, you will see the "Getting Started" page. Select the "Start Saving" option.



#5: The home page shows you savings offers. To view all 14 categories, select the three black bars in the upper left corner.



Don't wait - Visit [JohnDeere.com/](http://JohnDeere.com/)

Illinois Farm Bureau members are eligible for a complimentary John Deere Rewards upgrade (Platinum 2 status), which unlocks the best loyalty rewards, including valuable equipment discounts. Register today, and explore all that Rewards has to offer. Check out the savings on the following equipment categories:

- Commercial mowing - \$300 to \$2,700 off
  - Residential mowing - \$100 to \$200 off
  - Utility vehicles - \$200 to \$350 off
  - Tractors - \$200 to \$300 off
  - Golf & sports turf - \$500 to \$3,700 off
  - Commercial worksite - 17% off MSRP
- FarmBureau today to register!  
Details and Restrictions
- Must be a valid member of Farm Bureau for 30 days
  - A valid member email address is required for eligibility.

Cook County Financial Representatives of the Month

The Financial Representative of the Month program is designed by Country Financial Agency Managers of Cook County to recognize overall Insurance Leaders in Life, Disability, Auto, Home, and Health production during the month. The agent earns the award through efforts to provide quality service to existing and new clients. Listed below are the various agents honored by their agency manager with the Financial Representative of the Month designation.



**Ilir Numani**  
Chicago North Agency, Victoria Nygren, Agency Manager  
Ilir Numani has been named Career Financial Representative of the month for February 2020. His office is located at 6650 N. Northwest Hwy., #200 in Chicago, IL. His phone number is 773-631-2909. Ilir has been a Financial Representative since April 2005.



**Robert Barron**  
Chicago North Agency, Victoria Nygren, Agency Manager  
Robert Barron has been named Employee Financial Representative of the month for February 2020. His office is located at 4725 N. Western Ave., Ste 280 in Chicago, IL. His phone number is 414-630-7515. Cody has been a Financial Representative since October 2016.



**Tim Hranka**  
Chicago Northeast Agency, Sharon Stemke, Agency Manager  
Tim Hranka has been named Career Financial Representative of the month for February 2020. His office is located at 4200 W. Euclid Ave., Ste. E in Rolling Meadows, IL. His phone number is 847-963-8874. Nader has been a Career Financial Representative since March 2006.



**Michael Mikhaeil**  
Chicago Northeast Agency, Sharon Stemke, Agency Manager  
Michael Mikhaeil has been named Employee Financial Representative of the month for February 2020. His office is located at 5750 Old Orchard Rd., Ste. 500, in Skokie, IL. His phone number is 847-733-0762. Michael has been a Financial Representative since September 2019.



**Brett Riekana**  
Chicago Northwest Agency, Jack Smith, Agency Manager  
Brett Riekana has been named Career Financial Representative of the month for February 2020. His office is located at 23042 N. Main St., in Prairie View IL. His phone number is 847-415-2666. Brett has been a Financial Representative since May 2011.



**Faustino Ramirez**  
Chicago Northwest Agency, Jack Smith, Agency Manager  
Faustino Ramirez has been named Employee Financial Representative of the month for February 2020. His office is located at 1515 E. Woodfield Rd. Ste. 930 in Schaumburg, IL. His phone number is 847-891-3937. Faustino has been a Financial Representative since October 2017.



**Alonzo Nevarez**  
Chicago South Agency, Jeff Maxson, Agency Manager  
Alonzo Nevarez has been named Career Financial Representative of the month for February 2020. His office is located at 6239 S Archer Ave., in Chicago, IL. His phone number is 773-284-5539. Alonzo has been a Financial Representative since September 2018.



**Steve Phillips**  
Chicago South Agency, Jeff Maxson, Agency Manager  
Steve Phillips has been named Employee Financial Representative of the month for February 2020. His office is located at 1401 S. State St., Suite 150, Chicago, IL. His phone number is 312-583-1416. Steve has been a Financial Representative since November 2014.



**Jim Andresen**  
Orland Park Agency, Cary Tate, Agency Manager  
Jim Andresen has been named Career Financial Representative of the Month for February 2020. His office is located at 17605 S. Oak Park Ave., Ste. C&D in Tinley Park, IL. His phone number is 708-633-6490. Jim has been a Financial Representative since January 2003.



**Kurt Husein**  
Orland Park Agency, Cary Tate, Agency Manager  
Kurt Husein has been named Employee Financial Representative of the Month for February 2020. His office is located at 12130 S. Harlem Ave. Unit A in Palos Heights, IL. His phone is 708-480-5099. Kurt has been a Financial Representative since December 2017.



**Paul Turay**  
South Holland Agency, Jeff Orman, Agency Manager  
Paul Turay has been named Career Financial Representative of the Month for February 2020. His office is located at 19806 S. Wolf Rd. in Mokena, IL. His phone number is 708-478-0423. Paul has been a Financial Representative since April 2002.



**John Tymn**  
South Holland Agency, Jeff Orman, Agency Manager  
John Tymn has been named Employee Financial Representative of the Month for February 2020. His office is located at 10607 S. Harlem Ave., Unit 1A in Worth, IL. His phone number is 708-480-5091. John has been a Financial Representative since June 2019.

## Classifieds

All ads that we receive for the *Co-Operator* are also listed on our website at [cookcfb.org/membership/classifieds](http://cookcfb.org/membership/classifieds). If you have a photo of the item(s) that you are selling you can email it to us to include it on our 'Classifieds' page on our website only along with your ad. Email your ad (and photo if you have one) to [fbcooperator@gmail.com](mailto:fbcooperator@gmail.com). Please be sure to include your full name, Farm Bureau number, and phone number. Deadline for Classified ads is the 17th of each month. Any ads submitted after the 17th will appear in the following month's *Co-Operator*. Members may run up to four non-commercial classified ads annually for free. Any ads submitted after the fourth, will be charged. If mailing your ad, please mail to: Cook County Farm Bureau, Attention: Classified Ads, 6438 Joliet Rd, Countryside, IL 60525. You can also fax your ad to 708-579-6056.

## For Sale

Commercial Building 2300sq. ft. with full basement. Fantastic opportunity, excellent location a mile from the expressway, 1/2 block away from Arlington park train station. For more information call Rita at 847-259-9339.

Vacant waterfront lot 8712 sq. ft. in Marco Island Florida, facing Gulf of Mexico. Call Rita for more information at 847-259-9339.

SPRING BEE HIVE NUC PACKAGE PRE-ORDER [www.bradsbeesandhoney.com](http://www.bradsbeesandhoney.com) FB: bradsbeesandhoney. Prices online: 50% deposit required. Delivery Available. Call/Text Brad 262-749-0716

2300 sq. ft. Industrial Building. Office, fenced yard, asphalt parking area, located in Worth IL. Good road access. For more information call Rich at 708-670-2118.

Swift and White Cleaning- All types of cleaning jobs. Specially Estates and Move in Move out cleaning. [www.swiftandwhiteclean.com](http://www.swiftandwhiteclean.com) e-mail: [swiftandwhite8@gmail.com](mailto:swiftandwhite8@gmail.com) 773-226-3753 or 708-200-

7021.

Fitness Center, part of National franchise. 24hr fitness center located in a popular downtown northwest suburb. Same location for 13 years. Recently renovated. 2500sf of space. Includes cardio, strength and free weights. Asking price \$30,000. For details contact Dave at 708-602-0307.

Sharp countertop microwave 1.8 cu.ft., Hoover carpet & upholstery cleaner, lbimatic comb system & 2 boxes plastic binding combs, Fax machine with digital answer, Noritake Picadelly china 4pc. Dinnerware set (48pcs) Call Francis at 708-614-8541.

96 smoker craft, aluminum 15 feet, 40HP 4cl Mariner motor, shoreline trailer, R.H. Steering, foot pedal trolling motor, am-fm, CD, sunshade, depth fish finders \$6,200 Call John at 312-480-0747.

12-foot aluminum boat with trailer, 10HP out board, trolling motor, and depth finder with boat cover \$1400. Call John at 847-724-3967

Over 100 Bradford Exchange plates of all kinds. Call Sharon at 708-287-4064.

## For Rent

Cute and clean 2-bedroom 1-bathroom house with full size washer and dryer. 1 car garage space included. Located in Homer Glen on quiet, private property. \$1,500 per month call 708-710-6805.

## Wanted

Wanting to buy your HO scale or N scale electric train engines, cars, buildings, or anything train related. Do you have electric trains in your closet, basement, crawl space, attic or garage that you're not using? I buy train items from just a few pieces to hundreds of pieces at a time. Why sell them bit by bit, I'll offer you a price on all you have! TURN THOSE UNWANTED TRAIN ITEMS INTO CASH and give me a call! I also buy slot cars. Call Ron at 630-272-4433.

Wanted old and vintage items...toys, bicycles, fishing, coin operated pieces etc. Call Jim at 708-361-8230.

### FREE CLASSIFIED ADS

For Cook County Farm Bureau members

All Cook County Farm Bureau members may run four non-commercial classified ads annually free in the Cooperator. Only items of personal property will be accepted. Ads must be in the office by the 17th of each month.

Category:  For Sale Misc.  For Sale Other  For Rent  Wanted

Name: \_\_\_\_\_

Farm Bureau # \_\_\_\_\_

Phone: \_\_\_\_\_

Ad: \_\_\_\_\_

\*Please be sure to include a contact phone number where interested buyers can contact you. Ad can be typed or written. PRINT CLEARLY. (If not enough room, put on separate sheet)

Complete the above form and mail to:

Cook County Farm Bureau, 6438 Joliet Road, Countryside, IL 60525. You can also fax your ad to (708) 579-6056 or email to [juanita@cookcfb.org](mailto:juanita@cookcfb.org)

Non-member ad rate: \$.75 per word; \$15.00 minimum.

## Meet a "Face" of the Cook County Farm Bureau®

This month's "Face of CCFB" is ...

**Nikki Van Kalker, owner of Van Kalker Farms & Greenhouses**

- The Van Kalker family has been farming and growing flowers in Chicago's south suburbs since 1961.
- Our garden center in Lynwood has been open for over 20 years.
- While our focus is now more on the garden center than the farm, we still participate in two weekly farmers markets during the summer/fall.



### IF YOU/FAMILY WAS NOT DOING THIS, WHAT WOULD IT BE?

I'm not sure what we'd be doing if we hadn't been in the greenhouse business for years, but I do know what we'd be doing if we had to leave this business now. We opened an Amish bakery franchise, Rise'n Roll Bakery, in Schererville, IN in October. We sell a variety of baked goods and donuts made daily near Shipshewana as well as jams, cheeses, butter, and more.

### HOW LONG HAVE YOU BEEN A FARM BUREAU MEMBER?

I've been a Farm Bureau member for over 20 years, but the Van Kalker family has been a member for many years before that.

### WHAT DO YOU "SPECIALIZE" IN?

Our greenhouse specializes in geraniums, specialty annuals like Proven Winners, herbs, and vegetables. We sell a variety of combination planters and hanging baskets. Our most unique offering is our large selection of Mexican garden art and pottery.

Van Kalker Farms & Greenhouses  
1808 E. Joe Orr Rd.  
Lynwood, IL 60411  
Ph: 708-758-1732  
Hours: Mid April & June  
Mon-Sat 8am - 6pm  
Closed Sundays  
Hours in May  
Mon-Sat 8am - 7pm  
Sun. 8am - 7pm  
Online: [vankalkerfarms.com](http://vankalkerfarms.com)  
FB: [facebook.com/vankalkerfarms](https://www.facebook.com/vankalkerfarms)

### WHAT IS YOUR MOST VALUABLE PIECE OF EQUIPMENT?

We purchased a bale breaker over the winter which allows us to use compressed bales of soil for all our planting. The bale breaker grinds the compressed bales and fluffs the soil so it can run through our container filling machines. It's a great time saver and helps us keep down our costs.

### WHAT IS YOUR FAVORITE PLANT?

We grow so many beautiful plants, it's hard to pick a favorite! I love some of the multicolor petunias as well as fuchsia.

### WHAT IS YOUR FAVORITE SEASON?

My favorite season is summer. Our spring is too busy to really enjoy, and I love warm weather.

## RURAL NURSE PRACTITIONER SCHOLARSHIP PROGRAM

RIMSAP.COM

MAY 1, 2020 DEADLINE

Applications are now available for nurse practitioner scholarships through the Illinois Farm Bureau® Rural Nurse Practitioner Scholarship Program. There will be 10 scholarships, worth \$4,000 each, granted this year.



The scholarship program, now in its 28th year, helps encourage and develop the pool of rural health practitioners to help meet primary health care needs in rural Illinois. Students who receive scholarships agree to practice for two years in an approved rural area in Illinois.

To be eligible for the scholarship, students must be Illinois residents and be a Registered Nurse accepted or enrolled in an accredited Nurse Practitioner Program. Funding is provided by the Rural Illinois Medical Student Assistance Program.

Applications are available at county farm bureaus® throughout the state, on the Rural Illinois Medical Student Assistance Program website at [RIMSAP.com](http://RIMSAP.com), or by writing Donna Gallivan, Program Manager, Illinois Farm Bureau, PO Box 2901, Bloomington, IL 61702-2901. Applications are due May 1.

For additional information, contact Donna Gallivan at 309-557-2350, or via e-mail at [dgallivan@ifb.org](mailto:dgallivan@ifb.org).

## Shop Local for Your Planting Needs



Planting is happening...visit Cook County Farm Bureau® member Farm, Greenhouse & Garden Centers for all your planting needs this Spring! Their vegetable and flower plantings, flowers, trees, and shrubs will be ready for you!

Now more than ever, the call to patronize your fellow Farm Bureau member businesses is needed during these trying times. For a complete listing of member Farm, Greenhouse, and Garden Centers in the Cook County area, please visit: <https://cookcfb.org/discover-local/farm-products-locator>

We do have some local member farm, greenhouse and garden centers that are offering additional discounts to members this spring including Goebbert's Farm and Garden Center in South Barrington, Ted's Greenhouse in Tinley Park and Zeldenrust Farm Market & Greenhouse in Chicago Heights. Check our website (membership tab) for details.



### Cooked Kale

1979

Ingredients  
4 lbs kale  
Salt & pepper to taste  
Butter

Directions  
To cook kale: Wash kale and remove heavy stems. Use a large pot with water and cook 25-35 minutes or until tender. Drain, season with salt, pepper, and butter. Serves 6-8.

To make Scalloped Kale: Combine 3 cups cooked kale, 3 hardboiled eggs (chopped), and 1 cup white sauce. Arrange in alternating layers with 1 cup grated cheese (your choice) and bake 400° for 15 minutes.

The 2020 Cookfresh Recipe Collection is a special "throwback" edition for our 100th year! Recipes selected from decades of submissions to commemorate our Centennial! Recipe Booklets are available now!

To receive a copy of the 2020 Cookfresh Recipe Brochure, Email [membershipdebbie@cookcfb.org](mailto:membershipdebbie@cookcfb.org) or call 708-354-3276 or find it online: <https://cookcfb.org/discover-local/recipes>.

# Member Workshops

For Members, farmers, teachers, landowners, foodies, business owners and those that want new experiences and to have a great time!



**Industrial Hemp – 1 Year Later Webinar**  
Join us for a webinar to discuss Industrial Hemp in IL; Updates, 2020 Outlook, Q & A, and share your 2019 growing experience.  
**Dates:** Thursday, April 21, 2020  
**Time:** 1:00-3:00 pm  
**Registration:** Email Debbie at membershipdebbie@cookcfb.org; or online at the Member Center at www.cookcfb.org.

**Under normal conditions, Cook County Farm Bureau would have a listing of a number of upcoming programs, activities, and workshops that members can enjoy. However, we have postponed many of these opportunities for the time being. Check back with us next month for the latest offerings and updates.**



**Workshop on Preparing Wills and Trust and Transferring Non-Titled Property**  
The program will inform you what types of information you will need to gather and decisions you will need to make before meeting with a lawyer to prepare a will or trust  
**Dates:** The program scheduled Tuesday; April 21, 2020 has been **postponed** – date to be determined



**Planning for Organic Certification**  
Farmers and growers, are you thinking of going organic? Learn what's involved to go organic and the resources available.  
**Date:** The program scheduled Saturday; May 16, 2020 has been **postponed** - rescheduled to November 2020 – date to be determined



**Shred Day!**  
Bring any old documents (up to 3 bankers' boxes) that you would like to have shredded.  
**Dates:** The program scheduled Saturday; April 25, 2020 has been **postponed**– date to be determined

## How to Grow a Giant Pumpkin Webinar & Seeds



Contact us to receive a rebroadcast link of the 2019 Webinar on How to Grow a Giant Pumpkin. Free webinar covers seed, soil, planting tips, dealing with harsh weather, cultivation and harvest. This CCFB webinar was presented by George W Hamilton, Ext Field Specialist, Food & Ag, UNH Extension, and included award-winning pumpkin

growers sharing their tips. Webinar registrants will be mailed Giant Pumpkin Seeds to grow a winner to enter at our 20th Giant Pumpkin Contest on October 3rd!

Link/Seed Registration: Email: membershipdebbie@cookcfb.org, or call 708-354-3276, or online at the Member Center at www.cookcfb.org.

## Soil Testing Kits Available

Cook County Farm Bureau offers both members and non-members an opportunity to test their garden or lawn soil by purchasing a soil testing kit. Soil, in its natural state, is rarely fertile enough for the best growth of plants. Usually, it is necessary to supplement the earth's store of plant nutrients before we can obtain the most vigorous lawn, the most abundant and brilliant flowers, the most aesthetically satisfying trees/shrubs and the greatest yield of tasty and nutritious vegetables, or crops. Test your soil pH, potassium, phosphorous, and other key elements to begin the soil improvement process.

Complete kit guidelines and instructions, as well as mailing information included in the test kit and members will receive test results and basic recommendations within two weeks. Members are also encouraged to contact the University of Illinois Extension Master Gardener Resource Center, available by emailing [mastergardener@cookcfb.org](mailto:mastergardener@cookcfb.org) starting April 13th, for questions and assistance with gardening and lawn questions.

**Farm Bureau Soil Test Kit discounted member pricing:**

1 sample Soil Test Kit: \$22 | 2 sample kit: \$30 | 3 sample kit: \$45 | 1 sample Soil & Lead Test Kit: \$48 | 1 sample Lead Only Test Kit: \$40 Non-member pricing also available

Soil Kits are available at the Cook County Farm Bureau for by phone at 708-354-3276 using a Visa, MasterCard, or Discover at no additional charge. Costs are subject to change.



## "Adopt" an Easter Lily & Flower Program

Purchase an Easter lily and flower from a local greenhouse and garden center and spread goodwill, love, and beauty to your family, friends and neighbors during these difficult times.

Many churches and school fundraisers have cancelled their orders, so flower growers are packed with Easter lilies and flowers that have no home and will be composted without your help. Adopt a family of lilies or flowers to share with your family, friends, neighbor across the way, or church members. Visit the Cook County Farm Bureau "Buy Local" page on our website using the Farm Products Locator to search a greenhouse and garden center location to adopt from:

<https://cookcfb.org/discover-local/farm-products-locator>

Need Help Sourcing... contact Deb (CCFB) at [membershipdebbie@cookcfb.org](mailto:membershipdebbie@cookcfb.org) or call 708-354-3276 for assistance.

Take a photo of your lilies and post on Facebook Instagram, Twitter with the greenhouse/garden center where you purchased...

Bring beauty and joy to your corner of the world!



## Are you a business owner and a member of the Cook County Farm Bureau?

The Member-to-Member discount program was created to provide Cook County Farm Bureau members with businesses the opportunity to promote goods and services offered through their business to the other members of the organization. By offering a discount to the members of the organization, business owner members receive free advertising and promotion on our website.

In May and November of 2020, we will be developing a special "pull out"

section of our monthly publication, The Co-Operator, in which the Member-to-Member discounts are emphasized and promoted along with our membership benefits. The program is designed to be a win-win for members of the Cook County Farm Bureau!

Please visit [www.cookcfb.org/membermember.html](http://www.cookcfb.org/membermember.html) for details, to sign up for the program, and to view a list of current participating member-to-member businesses.