



Co-Operator

official publication of the Cook County Farm Bureau®



Scan for more farm bureau info. & events

A "staple" in the Farm Bureau member's home since 1938

Mission: To serve all members of the Cook County Farm Bureau® with meaningful and beneficial programs that reflect our Agricultural Heritage.

Vol. 91 No. 6

Countryside, IL 60525

www.cookcfb.org

June 2017



Congratulations to financial representatives from the Chicago Northeast Country Financial Agency! This agency won their first "Tipping the Scales" victory by contributing food and cash donations to this year's Food Checkout Day. Pictured left to right: Cook County Farm Bureau® President James Gutzmer, Country Financial representative Mike Salerno, Country Financial Agency Manager Assistant Abra Keup, Country Financial representative Yanni Zavakos, Cook County Farm Bureau Public Relations Team Chairwoman Janet McCabe, and Ronald McDonald House Charities® of Chicagoland and Northwest Indiana representative Kelly Evans.

Have a question for a Master Gardener?

The master gardeners are back in the Farm Bureau office for the season to answer questions from members and the general public related to gardening and horticulture.

The master gardeners are accessible by contacting the Cook County Farm Bureau® at 708-354-3276 on Mondays and Thursdays from 9:00 am to 1:00 pm. You can also contact them by email at mastergardener@cookcfb.org. Walk-ins are also welcome during Master Gardener office hours at the Cook County Farm Bureau suite located at 6438 Joliet Rd. in Countryside. This service is expected to continue through November.

General topic areas that can be addressed include soil test recommendations (see page 11 for soil testing kit information), plant disease issues and treatments, horticulture related questions, pest identification and treatment, and more. Commercial related questions will be forwarded to the University of Illinois Extension Professional Staff.



Upcoming Events

- **Planter Workshop Series** Page 1
- **Library Reading Days** Page 6
- **11th Annual Family Celebration Picnic** Page 10
- **Farm Bureau Night w/White Sox** Page 10
- **Cook County Farm Crawl** Page 12
- **Defensive Driving Course** Page 12

Planter Workshop Series Continues at Ted's Greenhouse on June 24!

The Cook County Farm Bureau® is once again excited to be taking its members back to Ted's Greenhouse in Tinley Park as part of the planter workshop series sponsored by the CCFB Commodities & Marketing Team. Ted's Greenhouse is offering a unique workshop on designing succulent and cactus container bowls, a specialty at Ted's! Members and their guests are invited to join us by registering at 708.354.3276 or online at the Member Center at www.cookcfb.org.

Succulent & Cactus Container Workshop at Ted's Greenhouse

Create a summer succulent or cactus planter and learn all of the potting design, care, tips, and tricks from the experts! Workshop includes 12 inch container, choice or combination of succulents and cacti. Join us and create a container worthy of your neighbors' and friends' envy! Attendees will also enjoy receiving a \$10 gift certificate to use for same day or future purchase at Ted's, compliments of the Cook County Farm Bureau!

When: Saturday, June 24, 2017
 Time: 10:00 AM
 Where: Ted's Greenhouse in Tinley Park 16930 S. 84th Ave. Tinley Park, IL 60487
 Fee: \$35.00* Includes \$10 gift certificate to Ted's Greenhouse, container and all materials. Gift Certificate can be used for same day or future purchase at Ted's Greenhouse.

Prior registration required by calling the Farm Bureau at 708-354-3276.

Members may also register online at the Member Center at www.cookcfb.org.



*Plant material and dishes may vary from picture.



Did Something Change? Let Us Know!

Our members' lives are constantly changing and evolving...moving of residences, marriage, divorce and more. Please keep us "in the loop" as changes occur so that we can properly reach, communicate and serve you.

Call us at 708-354-3276 Fax us at 708-579-6056

Email us at ccfb@cookcfb.org

Thank You!

Question of the Month

What was the theme for the 2017 Cook County Farm Bureau® Ag in the Classroom Bookmark Contest for kids?

Call the Farm Bureau at 708-354-3276, fax your answer to 708-579-6056, or email your answer to membershplinda@cookcfb.org (Please include Name, FB# and phone number) for your chance to enter a drawing for a \$25 gas card.

May's winner is **Kevin Snow**.

Last Month's Question: What does "PM" stand for in regards to the new membership classification of the Cook County Farm Bureau®?

Answer: Professional Member

THE POWER OF (A) AWARDS

Cook County Farm Bureau Winner of the Power of 'A' 2012 Summit Award

Let's Talk About the Ag on Your Plate Should I worry about antibiotics in my meat and milk?

Answered by Jeff Heinsohn, a Cook County Farm Bureau® volunteer and dairy farmer

All meat and milk products are antibiotic free. On farms like mine, if we need to treat an animal, we observe specific procedures and guidelines to ensure that our animals' health improves and that our meat and milk does not contain antibiotics.

Our milk is tested at our farm before it is shipped for processing. Milk is tested for antibiotics at every stage of the delivery process, including at the farm and before it is transported.



Tim Stuenkel, Grain Farmer from Matteson, Illinois

Each of these tests determine that milk does not contain

antibiotics. Milk is tested again for antibiotics before it is packaged or processed into cheese, ice cream, and liquid milk. It's because of these rigorous testing standards that milk is one of the safest food products you can buy.

Have a question? Submit it to bona@cookcfb.org. We'll share questions with our farmers and publish their answers as space allows in upcoming issues of *The Co-Operator*.

Dear Reader,

You receive the "Co-Operator" because you or a family member is a Farm Bureau member. Our farm owners and operators, as members, benefit from a local, state, and national organization committed to a strong and productive agricultural way of life.

Members without direct ties to farming, help to promote a strong local and regional farming lifestyle, encourage wise use of our limited natural resources, and help preserve our farming heritage. In addition, members are provided the opportunity to enjoy our affiliated company, Country Financial and have access to the many other benefits provided by Cook County Farm Bureau.

Thank you for your membership and continued support. We welcome member input on content, including suggestions of farm, home, food, natural resource, renewable energy, agricultural heritage, and farm history for future issues.

Bob Rohrer, CAE, FBCM, Editor

P.S. For more information, please access www.cookcfb.org and checkout the "Who We Are" video and the Country Financial Connection history.

The "Co-Operator", the monthly publication of the Cook County Farm Bureau, is available to members through mail delivery, e-mail, or by viewing at www.cookcfb.org. Members that wish to receive the publication solely by email can let us know by sending an email to membershiplinda@cookcfb.org with the subject: E-Co-Operator.

2017 Planters Series



20 Cook County Farm Bureau Members had a great time at the Zeldenrust Farm Market in Glenwood learning how to create beautiful flower planters on April 22 during the Commodities/Marketing Team's Planter Series.



13 Cook County Farm Bureau Members enjoyed creating beautiful fairy gardens at Van Kalker Farms in Chicago Heights on May 6 during the Commodities/Marketing Teams Planter Series.



The summer issue of Illinois Farm Bureau Partners Magazine should have arrived in your mailbox. Be sure to check out the various farm feel-good articles, fun facts about female farmers, great places to see in Illinois, barn weddings, local food facts, recipes, nutritional information, gardening tips, financial information, and the special Cook County Farm Bureau Page. More information, articles, and past issues are available at www.ilfbpartners.com

Gracias **THANK YOU** **Gratified**

The Gratitude Box

Each month we would like to give thanks to those who have helped us in some way.

No matter how big or small...We appreciate you!

- The Family of Raymond and Laura Hinze and Willard Hinze for loaning to the Farm Bureau a bunch of antique farm hand tools to use as a part a display for the Cook County Farm Bureau® centennial anniversary (year 2020).
- The staff of the IAA Credit Union for providing such great financial benefits to the members of the Cook County Farm Bureau and delivering great service on a daily basis.
- New Country Financial Reps Abid Bershed, Ava Cazares, Marcin Popiolek, Corey White and Brian Zielinski for participating in a Farm Bureau Orientation class on May 16. You were a great group!
- The Chicago North East Country Financial Agency, led by Manager Joe Youngman, for the great pizza party celebration in recognition of winning the "Tipping the Scale" Award competition as a part of the Food Checkout Day benefit for Ronald McDonald House Charities®.
- Van Kalkers (Nikki Van Kalker and daughter, Julia) Greenhouse and Farms for hosting the fairy garden planter workshop for members.
- Zeldenrust (Ruth and her team) Farm Market for hosting the creating a spring planter workshop for members.
- Our amazing AITC presenters for their dedication to the students of Cook County through wind, rain, snow, traffic and often, a lack of parking. You have shared the world of agriculture with a whole new group of children and we thank you.

Gratified **THANK YOU** **Gracias**

Thanks Appreciative Gratitude Recognition Appreciative Gratitude

Co-Operator

published monthly
Cook County Farm Bureau
6438 Joliet Road, Countryside, IL 60525
(ph) 708-354-3276 (fax) 708-579-6056
(e-mail) ccfb@cookcfb.org (website) www.cookcfb.org

USPS No 132180 Periodical Postage Paid at LaGrange, IL 60525 & additional mailing office

Editor Bob Rohrer
Copy Analyst Ashley Christensen

Officers & Directors
James Gutzmer, President
Michael Rauch, Vice President
Janet McCabe, Secretary-Treasurer
Dan Biernacki James Bloomstrand Elizabeth Christian
Roger Freeman Patrick Horcher Gerald Kopping
Tim Stuenkel Mark Yunker Ruth Zeldenrust

Farm Bureau Manager
Bob Rohrer

Office Staff
Melanie Paffumi Bona Heinsohn Katie Smith
Linda Tobias Bob Heine Debbie Voltz
Diane Merrion Kelli McSherry Jill Drover

Affiliated Companies
Jeff Orman Insurance Agency Manager, South Holland
Victoria Nygren..... Insurance Agency Manager, Chicago North
Marc Rogala Insurance Agency Manager, Chicago South
Jack Smith Insurance Agency Manager, Chicago Northwest
Joe Youngman .. Insurance Agency Manager, Chicago Northeast
Cary Tate Insurance Agency Manager, Orland Park
Dave Mottet General Manager, Conserv FS

Postmaster - Mail Form 3579 to 6438 Joliet Road, Countryside, IL 60525
"Co-Operator" (USPS No 132180) is published monthly as a membership publication for \$2.50 per year to members as a part of their annual membership dues by Cook County Farm Bureau, 6438 Joliet Road, Countryside, IL 60525. Periodical postage paid at LaGrange, IL and additional mailing office. Postmaster: send address changes to the Co-Operator, 6438 Joliet Road, Countryside, IL 60525.



Downwind

by Bob Rohrer, CCFB Manager

The Magic of Rejection

What is the “magic” that makes some organizations successful (my favorite baseball team!) when others fall on their face (my favorite football team!)? Fairy dust? Money? Voodoo? Leadership? Just blind luck?

I want my favorite organization (Cook County Farm Bureau®) to have the “magic” to enjoy unbridled success for members.

In April, I took an Executive Leadership online course to explore the topic. Of no surprise, **disruptive change and the extreme pace of change was forefront.** Change is inevitable. The organizations and leaders that have the skills to steer through change will survive and adapt. And those that don’t change become Blockbuster Video, Blackberry, Woolworths, Circuit City, Montgomery Wards, Pan-American Airlines, Pullman Company, MCI WorldCom, Oldsmobile, Compaq Computers, and DeLorean Motors.

Did those companies plan to fail or fail to plan?

Something that prevents organizations from changing and evolving is leadership’s inability to handle rejection by individuals, boards, customers and members. As an example, one of my classes featured a video of Jia Jiang, a young man and a Chinese immigrant living in Texas. Jiang blamed his fear of rejection as the reason he has not created a successful company.

Rather than let this fear control his life, Jiang decided

to teach himself how to accept rejection without fear (and he videotaped each rejection). The result was a fascinating video collection which he calls rejectiontherapy.com (100 days of rejection). Here are few great video examples he posted:

Rejection 2: request a “burger refill”

Rejection 6: play soccer in someone’s backyard

Rejection 19: Make an announcement on a Southwest Flight

Rejection 39: Race random stranger

Rejection 49: Interview a panhandler

Rejection 83: Exchange rejection with a smile

Watching these videos certainly caused me to cringe... I am so anti-rejection! However, the lesson was not lost on me: those people that are successful must be willing to take risks and fail. How many times did Thomas Edison create a version of his incandescent lightbulb before it actually functioned as theorized? What if Michael Jordan had decide not to play basketball after his sophomore year of high school? What if Dumbo had not flapped his ears? What if Wile E. Coyote had given up after the first time he blew up?

Recently, CCFB President, Jim Gutzmer passed onto me minutes and documents from a now defunct organization, the Cook County Truck Gardeners and Farmers Association. (Some readers may remember or have been a part of this Association) On April 1, 2009, action was taken to dissolve the Association due in part to the

lack of active membership and the inability to muster a quorum at meetings. That is true membership rejection. I looked at the purpose of the organization created in 1902 and it is strikingly similar to that of the Cook County Farm Bureau’s purpose. I’m sure they did not plan to fail, but did they fail to plan?

Your Board, Teams, and Staff have been actively discussing the Cook County Farm Bureau delivering on the promise of membership

made when the individual joins the organization.

Success requires a well-designed plan, an eye on the future, understanding of strengths and weaknesses as well as those of your opponents, hard work by team members, a willingness to do the small things great, leadership vision, and the ability to articulate that vision, a cohesive, positive culture, and perhaps a little bit of luck? Will your Cook County Farm Bureau have the

“magic” in the future?

We will try new things, new approaches, variations in communication, and offer new programs for farmers, landowners, homeowners, millennials, prime timers, consumers, and friends! On occasion, we might fail, but we will learn from those failures. Heck, we may pull a rabbit out of a hat.

Abraacadabra, hocus-pocus, shazam!

Bob Rohrer can be reached at brohrer@cookcfb.org



Contact Information:

Cook County Farm Bureau, 6438 Joliet Road, Countryside, IL 60525
708-354-3276 708-579-6056 Fax E-Mail: ccfb@cookcfb.org www.cookcfb.org

AUTO | HOME | LIFE | BUSINESS | RETIREMENT



Your South Holland Agency



Jeff Orman
Agency Manager
708-560-7777



Andrew Carrell
South Holland
708-596-3999



Jim Verduin
South Holland
708-596-0008



Randall Cox
Matteson
708-679-1870



Elliot Day
Matteson
708-679-1870



Gary Molenhouse
Matteson
708-679-1870



Jason Riha
Worth
708-361-4330



Pat Hickey
Worth
708-361-4081



Tim Winters
Worth
708-480-5094



Josh Van Namen
Worth
708-361-3925



Jim Pathemore
Orland Park
708-226-1896



Tim Perchinski
Steger
708-754-7300



Bob Smith
Homewood
708-798-4844



Paul Turay
Mokena
708-478-0423



John VanGennep
Mokena
708-478-5500



Bob Deenik
Lansing
708-474-5600



Tim Van Zuidam
Lansing
708-474-0006



Mike Cerf
Oak Forest
708-560-7777



Mike McKenny
Oak Forest
708-560-7777



Wendy Boston-Robinson
Oak Forest
708-560-7777



Monica Moore
Oak Forest
708-560-7777



Sandi DeVries
Oak Forest
708-560-7777

Auto, home and business insurance policies issued by COUNTRY Mutual Insurance Company®, COUNTRY Preferred Insurance Company® and COUNTRY Casualty Insurance Company®, Life insurance policies issued by COUNTRY Life Insurance Company® and COUNTRY Investors Life Assurance Company®, Fixed annuities issued by COUNTRY Investors Life Assurance Company®, All issuing companies located in Bloomington, IL.

Helping you protect what matters most

o816-55oHO



Cook County Farm Bureau® members receive 10% off all orders at participating Culver's. Provide membership card to receive discount.

Participating Locations:

McHenry • Island Lake • Mount Prospect • Rosemont • Arlington Heights • Schaumburg - Wise Rd. Crestwood • Lansing • Buffalo Grove • Frankfort • Homewood • Matteson • Orland Park • Tinley Park

Expires 12.31.17




“Where Am I?”



If you can guess where in Cook County Calvin was when this photo was taken, you will be entered to win a \$25 gas gift card! To enter, call us at 708-354-3276 with your answer OR email your answer (please include name & member number) to membershiplinda@cookcfb.org using the subject “Where Am I?” A name will be drawn at random.

Last Month’s “Where Am I?”

In last month’s “Where Am I?”, Calvin was at Goebberts’s Farm in South Barrington, IL. Congratulations to Peter Jilbert for being last month’s winner!



Can You Name This Antique Farm Tool?

Do you know what the name of this tool is or what it’s used for? Each month we will post a photo of an antique farm tool until the end of the year. There will be a total of seven antique tools (one being featured each month in the Co-Operator until December). Try to name each tool each month, and once we post the final tool, you can submit to us your list with the name of all of the tools. If you name all seven tools correctly, you will be entered into a drawing for a \$50 gas card.

(If you miss a month, you can always go to cookcfb.org to view past issues of the Co-Operator).

Name That Antique Farm Tool Contest

- June: _____
- July: _____
- August: _____
- September: _____
- October: _____
- November: _____
- December: _____

The winner of the drawing will be announced in January 2018. Submit your list of guesses in December to CookCFB, 6438 Joliet Rd, Countryside, IL 60525. Submit via fax: 708-579-6056 or email to membershiplinda@cookcfb.org.

Meet a “Face” of the Cook County Farm Bureau®

Each month we highlight a volunteer, staff member, or ag partner of the Cook County Farm Bureau. This month’s “Face of CCFB” is ...

Nora Beverly



- Serves on the CCFB Member Relations Team
- Has been a Country Financial® Representative since 2011
- Is a mom to three daughters and has been married for 21 years
- Has been a longtime volunteer for the Cradle and was featured on the Oprah Show in 2001
- Loves to travel with husband

WHAT IS YOUR FAVORITE FARM ANIMAL?

Jersey Cow

IF YOU COULD BE ANY TYPE OF FARMER, WHAT TYPE WOULD YOU BE?

A tree farmer

WHAT IS YOUR FAVORITE FARM MEMORY?

Visiting Bona’s (CCFB Staff Member) farm last year. We were able to see her family’s operations and got to see one of her cows in labor

WHAT IS YOUR FAVORITE CCFB MEMBERSHIP BENEFIT?

The Member-to-Member discounts

WHAT IS YOUR FAVORITE FOOD?

Chicken Quesadillas

WHAT IS YOUR FAVORITE TIME OF THE YEAR?

Fall

WHAT IS YOUR BEST FOOD MEMORY?

Tableside queso fundido in Cabo San Lucas

Family Food Bytes

BRING ON THE FULL-FAT DAIRY (USA TODAY)– According to a study published in the European Journal of Epidemiology, dairy products, including full-fat items, have a “neutral” effect on health and do not increase the risk of heart attacks or strokes. “There’s quite a widespread but

mistaken belief among the public that dairy products in general can be bad for you, but that’s a misconception,” said researcher Ian Givens.

FDA TO COUNTER GMO ‘MISINFORMATION’ (Washington Post)– The FDA will fund a campaign to promote GMOs in food

under the federal budget agreement signed last week. The plan allows for \$3 million to promote “the environmental, nutritional, food safety, economic, and humanitarian impacts” of biotech crops and their corresponding food products with consumers.

Board of Directors Approves New Membership Classification

During their April meeting, the Cook County Farm Bureau® (CCFB) Board of Directors, took action to approve a bylaw change that provides for a new classification of member, the Professional Member (PM). The PM classification is for individuals who are employed in farm and agricultural related occupations but do not directly earn their income from farming.

The PM will have voting rights as a member, is eligible to serve on the local Board of Directors and as an officer of the CCFB, and can represent CCFB as a delegate at the

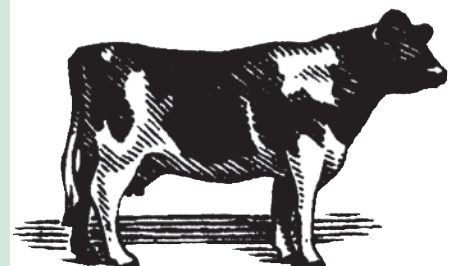
state annual meeting. The PM should have a passion for agriculture and farming and be seeking a strong industry in the Cook County area. With the adoption of this new membership classification, the CCFB features three main membership classifications:
MM (Farmer Member) - for individuals that are farming and earned \$2,500 or more annually
PM (Professional Member) - for individuals that are employed in the field of agriculture
A (Associate Member) - for individuals seeking to support the efforts of

the Farm Bureau and to access the benefits and services offered through the organization

The Cook County Farm Bureau would like to encourage any Associate Member who is employed in an agricultural related field and has a strong interest in the future of agriculture to consider applying for the Professional Membership classification. Please contact the Member Service Center at the Cook County Farm Bureau at 708-354-3276 or email us at ccfb@cookcfb.org for more information.

Trivia

- A typical dairy cow weighs 1,400 pounds and consumes about 50 pounds of dry matter (hay, grass, grain, etc.) each day
- It takes more than 21 pounds of whole milk to make 1 pound of butter



“From the Country” Don't Let Your Financial Security Get Washed Away



*Vicki Nygren,
Country Agency
Manager
Chicago North
Agency*

Before floodwaters lap at your front door, make sure your financial security isn't in danger of being washed away.

Floodwaters can be a nasty cocktail of water, mud, sewage, animal waste and chemicals. A flood can ruin your home and belongings. Without flood insurance, you're likely to be on your own to pay for damage caused by flooding.

Many homeowners have a false sense of security because they believe that

their homeowner's insurance covers flooding. Homeowner policies, though, typically do not cover flood damage.

Other people believe that federal disaster assistance will provide them with full compensation in the event of a flood. This assistance often comes in the form of a low-interest loan to help rebuild after flood damage. This is often insufficient compensation for the losses of flood victims.

Plus, federal disaster assistance loans are only available if the federal government formally declares a disaster. Few flood events are declared federal disasters, according to National Flood

Insurance Program (NFIP) officials. That's not a gamble you want to take!

There's only one way to rest easy during wet months – purchase flood insurance through the NFIP. You must live in a community that participates in the NFIP to qualify for National Flood Insurance. Visit <http://www.fema.gov/fema/csb.shtm> to find out if your community participates in the program.

You may be eligible to buy federal flood insurance through your local COUNTRY® Financial representative. You might be surprised how inexpensive it is. Rates depend on whether you live in a low-to-moderate

or a high-risk flood zone as well as the amount of coverage you need.

You may believe you don't need flood insurance because you live in a low-risk area. Almost a quarter of all flood insurance claims come from areas with low-to-moderate flood risk. Those living in low-risk areas may qualify for the lower cost Preferred Risk Policy, which provides contents coverage beginning at \$49 per year and building plus contents coverage starting at \$129 a year.

Don't wait to shore up your financial security until it's too late. There is a 30-day waiting period for federal flood insurance to take effect.

Visit your COUNTRY Financial representative to learn more about flood insurance. Check out www.floodsmart.gov for more information about the NFIP.

*Investment management, retirement, trust and planning services provided by COUNTRY Trust Bank® 1705 N Towanda Ave, PO Box 2020 Bloomington, IL 61702-2020 tel (800) 422-8261 Not FDIC Insured * No Bank Guarantee * May Lose Value Registered Broker/Dealer offering securities products and services: COUNTRY® Capital Management Company 1705 N Towanda Ave, PO Box 2222 Bloomington, IL 61702-2222 tel (866) 551-0060 Member FINRA and SIPC*

2017 “Thank a Farmer” Themed Bookmark Contest Winners

Thank you to all of the children of Cook County who entered our “Thank a Farmer” bookmark contest this year! Some entries came from schools and others from individuals; all of them showed just how much children understand the importance of agriculture. It was a tough choice with over 100 entries! The winner of the contest was Monica C. from Des Plaines, who will be awarded a \$25 Amazon gift card. The runner-up winners were Evelyn C, Angelina T., and Marcelina P. who will each receive a \$15 Amazon gift card. Congratulations to all! The bookmarks will be given out during our summer library programming (see schedule on this page) and to all 4th grade students who receive Ag in the Classroom Programming next year at their school.



*1st Place Winner,
Monica C.*



*Runner Up Winner,
Evelyn C.*



Runner Up Winner, Angelina T.



Runner Up Winner, Marcelina P.

Recipe of the Month: Fresh Cherry Slices



Fresh Pie Filling:

5 to 6 cups fresh pitted cherries, about 2 1/2 to 3 pounds (I used Bing)
1/2 cup water
2 tablespoons fresh lemon juice
2/3 cup granulated sugar
4 tablespoons cornstarch
1/4 teaspoon almond extract
In a saucepan over medium heat, combine cherries, water, lemon juice, sugar and cornstarch. Bring to a boil; reduce heat to low and cook, stirring frequently, for about 10 minutes. Stir in almond extract. Cool slightly before using as a topping.

Proceed with recipe:

1/2 cup butter, 2 sticks
4 eggs
1 1/2 cup sugar
2 cups flour, sifted
1 tablespoon fresh lemon juice
Cream butter and add sugar gradually, adding 1 egg at a time. Add flour and lemon juice and mix well. Pour into jelly roll pan and mark off 20 squares. Place cherry pie filling in center of each square. Bake at 350° for 40-50 minutes until done. Sprinkle with powdered sugar while still warm. Serves 20.
Recipe reprinted with permission from Darlene Boomsma, Crete

Your Orland Park Agency



Cary Tate
708-226-1111
Agency Manager
Orland Park, IL



Piero Setta
708-226-0431
7601 W. 191st St
Tinley Park, IL



Jim Andresen
708-633-6490
17605 S Oak Park Ave
Tinley Park, IL



Thomas Geraghty
708-425-9700
5003 W 95th St
Oak Lawn, IL



Mark Wright
708-403-2416
7601 W. 191st St
Tinley Park, IL



George Parthemore
708-226-1896
9432 W 143rd St
Orland Park, IL



Dean Reszel
708-478-3136
11056 W 179th St
Orland Park, IL



Mike Skrabis
708-226-1666
9731 W 165th St
Orland Park, IL



Tony Palumbo
708-403-5708
7601 W. 191st St
Tinley Park, IL



Mike Spadoni
708-425-1825
3923 W. 95th st
Evergreen Park, IL



Bob Johnson
708-429-9422
17605 S Oak Park Ave
Tinley Park, IL



Dan Stumpf
708-614-1688
17605 S Oak Park Ave
Tinley Park, IL



Bill Thompson
708-361-1304
12130 S Harlem Ave
Palos Heights, IL



Nora Beverly
708-429-7789
17605 S Oak Park Ave
Tinley Park, IL



John Piazza
630-257-6100
106 Stephen St
Lemont, IL



Nick Burke
708-425-1816
3923 W. 95th st
Evergreen Park, IL



Mike Thauer
708-425-1559
3923 W. 95th st
Evergreen Park, IL



Erica Storrs-Gray
708-671-1465
12130 S Harlem Ave
Palos Heights, IL



Terry LaMastus
708-754-5900
3308 Chicago Rd
Steger, IL



Joe Voves
708-425-1527
3923 W. 95th st
Evergreen Park, IL



AUTO | HOME | LIFE | BUSINESS | RETIREMENT

9731 W 165th St Suite 36 Orland Park, IL 60467
708-226-1111



Agricultural Literacy & Public Relations

Ag Lit Bit By Diane Merrion



Horses and more

One of the benefits of being an Ag Literacy Coordinator is reaching new audiences to share the message of agriculture in the classroom. While we reach an amazing number of students in classrooms throughout Cook County, we also are given the opportunity to go beyond the school walls. One of these programs occurred last month at Kopping Stables in Lemont, IL. Kopping is the host site of a Holistic Riding Equestrian Therapy Program run by Ms. Marlene Karman. Her programs are focused on the special needs community, including students from a local high school. What a joy it was to be asked to provide supplemental education to these students about agriculture and its connection to horses, cattle, food, and much more. The hands-on learning aspect of agriculture made an immediate impact on these special needs students. Ag education has a tendency to do that.

This was one of many

“custom” programs that we’ve been lucky enough to be asked to do this year. Others have included visiting a pre-school who had wrapped up a study of chickens and corn, a middle school who wanted to understand more about where food came from as part of their food drive efforts, several middle schools who wanted to their students to understand the vast opportunities in agriculture careers and a high school Global Geography class who were curious about modern agriculture and its use of technology. It has been an interesting year and it’s only June! The programs will continue this summer with some Sheriff’s Department camp visits, teacher education programs called Summer Ag Institutes and a host of summer library visits. We welcome new partnerships that can help us reach others through ag literacy and this has certainly been happening this year. While all visits can’t be on horse farms, all can be just as rewarding.

Summer Intern 2017



We welcome our summer intern, Ms. Brittany Nash, who

will join our Ag Literacy team on May 25th.

“I am excited to be working as an Ag in the Classroom Intern for the Cook County Farm Bureau. While attending the Chicago High School for Agricultural Sciences, I had the opportunity to work alongside my agriculture

teachers and be a leader for the Agri-tourism lessons throughout the last two years. I just finished my first year at Illinois State University and I am looking forward to begin working with staff but also adults and children who want a better understanding of what Ag in the Classroom is truly about!” By fulfilling this leadership position, I was able to grasp a better understanding of urban agriculture and all of its many benefits.

New Materials for Teachers

Illinois Ag Literacy Coordinators met last month to receive updated materials for teachers that will be shared during our Summer Ag Institutes and at our fall workshops. We are excited with new Ag Mags including Pollination and Seasons, along with a revised Corn Ag Mag and more to come. Our meeting allowed us the opportunity to visit a family farm that produces a top product of Illinois. Can you

guess what that product is? We visited Heepke Farms, a 4th generation grower of horseradish in Edwardsville, Illinois. To learn more about this grower and his farm, visit <http://www.ilfbpartners.com/food/southwest-illinois-horseradish-capital-of-america/>.



FOR MORE INFORMATION CONTACT:
Diane Merrion, Ag in the Classroom Coordinator
aitc@cookcfb.org

Agriculture in the Classroom Closes Out 31st Year

It’s hard to believe that the Cook County Farm Bureau’s Agriculture in the Classroom Program has been visiting schools for over three decades. As we wrapped up our programming June 1st, we visited over 25,000 students in classrooms throughout our county this year alone. Our content has always focused on the importance of agriculture including how it provides all of our basic necessities such as food, clothing, and shelter. Recent additions now include more information about proper nutrition, careers in agriculture and renewable resources being provided by farm commodities. Teachers value our free programs as is evidenced by some of the following comments:

I liked that the program content went perfectly with topics we have been discussing in class, but it took it even further.

I love the use of tangible materials to keep students engaged. I learned a lot



Students show their appreciation for their Ag in the Classroom presentation! All classrooms receive bookmarks (with the winning bookmark designs) to take home and use to quiz their families on agriculture facts they learned during the program.

about what is produced in Illinois and how important agriculture is to our daily lives.

The program was very informational and the students really enjoyed it.

The presenter did a fine job with the students and they all loved the hands on experiences. I am very happy that these programs exist. My students learn a lot and I am able to connect the information to our classroom objectives.

We give our sincere appreciation to all of

the teachers, students and principals for their attentiveness and participation. On behalf of presenters Amy, Diane, Linda, Wendy, Kathy, Sarah, Jim and Toni we enjoyed our lessons this year and look forward to seeing a whole new group of 4th grade students in the fall. Teachers are encouraged to stop by and visit our Ag in the Classroom office this summer to look through our Learning Kits, Ag Mags and other free resources. Please call to arrange a visit and we will have the materials ready for you to view.

Cook County Farm Bureau

Coming to a library near you... Reading by Design - Test your skills

Design a Structure the Wolf Can't Blow Down

We will challenge your future 8-12 yr old engineers to build a structure that can withstand the Big Bad Wolf! We will read a story, build a structure and make a craft. Library schedule is below.

Pre-registration is required by calling the individual library.

6/16—North Riverside	2:00 p.m.
6/21—Morton Grove	2:00 p.m.
6/22—Evergreen Park	2:00 p.m.
7/17—Stickney	11:30 a.m.
7/19—Glenwood/Lynwood	2:00 p.m.
7/20—Lemont	2:00 p.m.

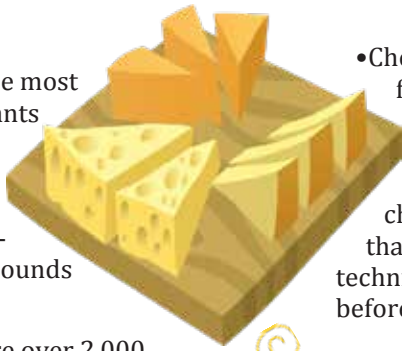


Cook County Farm Bureau@ 6438 Joliet Road, Countryside, IL
Agricultural Literacy Program <http://www.cookcfb.org/ag-literacy>

AGRICULTURE ADVENTURES FOR FAMILIES

Did you know that June 4th is National Cheese Day? Whether you like your cheese hard or soft, melted or sliced, get to the dairy aisle of your nearest grocery store and pick up a wheel of the good stuff. While you're snacking, chew on these fun facts about cheese:

•Wisconsin has the most cheese making plants in the U.S. with 90 percent of the state's milk being made into cheese - about 2.8 billion pounds per year



•Cheese making has been around for nearly 4,000 years, according to the International Dairy Foods Association. Though no one really knows who made the very first cheese, historical records indicate that travelers from Asia brought their technique of cheese making to Europe before the Roman Empire.

•Today, there are over 2,000 varieties of cheeses.



•As a country, the U.S. produces the most cheese in the world annually.

•U.S. per capita cheese consumption is about 34 pounds per person - that's more than one full ton of cheese during the average lifetime. The French eat the most cheese, putting away an average of 57 pounds per person a year.

•It takes about 10 pounds of milk to make one pound of cheese, according to the Wisconsin Milk Marketing board.

•Mozzarella cheese is the biggest-selling cheese variety in the U.S., followed by Cheddar.

Source: Foxnews.com

Types of milk...so many to choose from!



Cows give us milk which is made into **whole milk** (whole milk is 3.5% milk fat and is the closest way it comes from the cow before processing), **reduced-fat milk** (2%), **low-fat milk** (1%) and **fat-free milk**. Dairy cows also produce organic milk.

Do you know what other animals give us milk?

With so many milk options now at the grocery store, would you consider the following as being real milk since they don't actually come from a cow? Soy, Almond, Coconut, Rice.



Did You Know?

- A cow will produce an average of 6.3 gallons of milk each day. That's more than 2,300 gallons each year!
- U.S. dairy farms produce roughly 21 billion gallons of milk annually.
- Dairying supplies 11,600 Illinois jobs.
- The average American consumes almost 25 gallons of milk a year.
- Milk is measured in pounds, not gallons, for the purpose of accuracy. It's difficult to total the milk records in volumetric measurements – imagine having to add together 4 gallons, 3 quarts and 2 tablespoons in the morning, and 6 gallons, 1 quart, 3 pints and 2 teaspoons in the evening!
- The greatest amount of milk produced in one year was 59,298 pounds by a Holstein cow named Robthom Sue Paddy.
- On a dairy farm, a farmer's day begins and ends with milking the cows.
- Illinois ranks 20th in milk production in the U.S.
- Fresh milk will stay fresher longer if you add a pinch of salt to each quart.
- A cow is more valuable for its milk, cheese, butter and yogurt than for its beef.
- Home delivery of milk (i.e. the milkman) started in 1942 as a war conservation measure.



Source: IL Farm Bureau Partners Magazine

Choose your prize: Choices include a \$25 Beggar's Pizza Gift Card, a \$25 Home Run Inn Gift Card, OR *3 AMC Movie Tickets *AMC Yellow tickets not valid in California, New York & New Jersey.

Complete the Word Search puzzle for your chance to win! Winners will be contacted by mail.

Mail to: Cook Co. Farm Bureau
Ag Adventures Word Search
6438 Joliet Rd
Countryside, IL 60525
Fax to: 708-579-6056

Email to: membership@cookcfb.org

Complete and submit an entry every month all in 2017 and your name is automatically entered into an "End of Year" drawing for a gift basket full of ag themed goodies. Good luck!



David Jerbi

Congratulations for being last month's word search winner!

May Word Search

C L Z A N H H Q W B I Y G I Y
P H O G S Z N M U O Z K W C L
O E Y S L K T T X Z C Q Y I J
A H P Q H N T D O Z K W P K Q
X K N W V E G D I Q C X I S D
O T E S R O E A Z V V L N G L
A D Q F I C O O J L V A D H Q
M M G J I Q B L C R C K E G F
V W O L K L I M V K Y V T S B
Y T S M O K Z L A J A H L D H
R I K N E O U P N L E J E W W
P C S N E G Z G L V T A M Q K
A H O B O Q B E M L E U Q A K
L D M C L L R A L M I D B C M
M Y A V O A L O C H E D D A R
O O T I Z N Q A A Z I D F P B
N S O Z R J U Z G Y O G U R T
D R O V O Y A T Z I Z T R S S
G M D K R L R M V H M H C O M
E S E E H C T B N J C E U A W

Almond
Butter
Cheddar
Cheese
Coconut
Cow
Dairy
Gallon

Melted
Milk
Mozzarella
Quart
Sliced
Snack
Soy
Yogurt

Name: _____

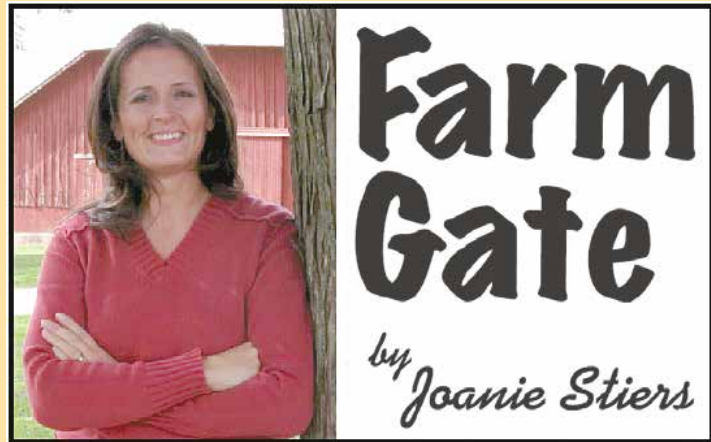
Phone #: _____

Membership #: _____
(Membership # is located on front of paper)

If you were to win, check your preference:
___ Beggar's Pizza GC ___ HRI GC ___ 3 Movie Tix
(If a choice is not made, movie tickets will be sent)

Deadline is the 20th of each month.

From the Farm Editor's Desk...



Modern technology helps farmers weather the weather

The impromptu game that our kids started in the backseat resembled a contest of my childhood. On evening drives in December, my brother and I would count the number of rural homes with Christmas lights on our sides of the car.

Fast forward 25 to 30 years, and change the season to prime corn-planting time. My kids competitively counted puddles in the fields we passed. Big puddles. The type of ponded areas that attract geese in places that farmers had just planted or needed to plant.

Self-employment generally brings the perk of “being your own boss.” But on the farm, Mother Nature occasionally reminds us she remains in charge. Too much rain. Not enough. Crop-topping wind events ahead of harvest. A pop-up storm on fresh-cut hay. Then, finally sun and a breeze to dry wet soils, just in time for a shower to again delay planting, spraying or harvest.

After generations on the farm, we still can't control the weather, but a mix of modern technology improves management. We remain loyal to a reliable rain gauge and perform physical field checks after a weather event. To those lengthy traditions, we add smartphones to keep us posted on changing weather forecasts. As a result, we can plan field operations with the most current weather information available. It also means the guys can view satellite radar images from the field, rather than call us farm women for our rainfall predictions from the home or office computer.

Today's digital technology platforms for agricultural use provide historical, real-time and forecasted weather specific to each field. This proves especially beneficial to monitor conditions within fields miles apart. In fact, one summer this weather tool indicated hail had hit one of our soybean fields. “By golly, it was right,” as Grandpa would say. We checked, and Mother Nature did hail in an isolated area that included our soybean field. We filed a claim, and our hail insurance policy paid.

Even with today's technology, we still wonder what we could have done differently ahead of (or behind) an uncontrollable weather woe. I still remember the agriculture pesticide commercial when a farmer jumps in his time machine to spray before the weather turned. If only. Rather than time machines, we have more efficient machinery than ever before. Grid tiling with precision instruments improves field drainage in wet fields. And modern-day crop varieties tolerate temperature and moisture fluctuations better than in the past.

Farmers seem to remember the last year of a similar weather pattern like a sports statistic. At its start, this spring brought back willies about the cold, wet weather of 2009. And we don't want to play that game again this year.

About the author: Joanie's family grows corn, soybeans and hay and raises beef cattle in West-Central Illinois. She is a wife and mother of two farm kids.

USDA releases 2016 certified organic data Industry growing at fastest rate since 2008

USDA announced new data indicating that the organic industry continues to grow globally. The United States is home to 24,650 certified organic operations, with another 37,032 spread around the world.

The 2016 count of U.S. certified organic farms and businesses reflects a 13 percent increase between the end of 2015 and 2016, continuing the trend of double-digit growth. The number of certified operations has increased since the count began in 2002. This marks the highest growth rate since 2008.

Organic certification is a voluntary standard managed through a public-private partnership. USDA accredits and oversees about 80 businesses and state governments that directly certify organic farms and businesses.

A complete list of certified organic farms and businesses is available through the Organic Integrity Database of certified operations maintained by USDA-accredited certifying agents. The database provides accurate and timely information about operations certified to use the USDA organic seal.

Countdown begins for ag census

America's farmers and ranchers soon will have the opportunity to represent agriculture in their communities and sector by taking part in the 2017 Census of Agriculture.

Conducted every five years by USDA's National Agricultural Statistics Service, the census, which will be mailed at the end of this year, is a complete count of all U.S. farms, and ranches, as well as those who operate them.

Study finds food labels important—and confusing—for consumers U of I analyzes significance of seven different labeling claims commonly used by food marketer.

Grocery shoppers are confronted with more food labels than ever and have started to place more stock in those claims, according to a University of Illinois study. The study ranks which production attributes are most important to buyers for beef,

chicken, milk and eggs.

For all four products, consumers ranked “no growth hormones” as the most important claim, which came as a surprise to the study's lead researcher Brenna Ellison. “It's odd because growth hormones are already prohibited for poultry products,” Ellison said. “Non-GMO” and “humanely raised” also ranked high in importance.

The study showed that the sheer number of different labels is confusing to consumers, Ellison said.

“Products that are certified organic or humanely-raised also prohibit the use of growth hormones in animals,” added Ellison. “Ultimately, it means consumers are spending unnecessary time looking for labels that reflect this particular attribute. “They keep adding more labels to make sure consumers can find all of the things that they want, even though one label might do the job.”

“Certified organic” came back as the least important of the seven claims tested.

“When most people hear the term ‘organic,’ they think of produce, fruits and vegetables. I don't think the term translates as well to animals,” Ellison said. “Consequently, consumers may not understand that the organic certification for meat and other animal products actually already includes a lot of these other production attributes.”

SWCD Availability of Funding

The Will-South Cook Soil & Water Conservation District (SWCD) has announced the availability of funding to support agricultural and urban landowners interested in participating in the Illinois Nutrient Loss Reduction Strategy (NLRs). Practices include cover crops, grassed waterways, grade stabilization structures and rain gardens

among others. Funds are being targeted to specific townships and will be based upon a 60 percent cost share program. Interested individuals should contact the SWCD at (815) 462-3106 x3 or info@will-scooksecd.org for additional information.

IFB, opposition groups request more time to comment on GLBT rail line

Illinois Farm Bureau and six county Farm Bureaus joined opposition groups this week requesting more time to comment on Great Lakes Basin Transportation's (GLBT) application to build and operate a freight rail line across three states. Filing an application with the Surface Transportation Board (STB) triggers a 35-day public comment period.

Thomas McFarland, an attorney representing six opposition groups in Illinois, Indiana and Wisconsin, requested an additional 55 days, for a total of 90 days, for the public to comment. In a letter to the STB, McFarland noted GLBT took 138 days to file its application from the date the board suspended the environmental review process. IFB wrote a letter in support of McFarland's request.

The proposed 261-mile route would cut mainly through farmland in the Illinois counties of Grundy, Kankakee, LaSalle, Lee, Ogle and Winnebago. Manteno would be home to the railroad's operating headquarters, a railport and the railroad's own fire department, according to the application filed with the STB.

The STB, the independent agency charged by Congress to oversee rail line construction, among other things, held public meetings more than a year ago on the proposed project. More than 3,000 people submitted concerned comments about the project.



According to Great Lakes Basin Transportation's application, the new rail line's intent is to bypass Chicago, making rail service quicker and more efficient. An estimated 110 trains a day could bypass the existing Chicago terminal, and trains could travel up to 70 mph on the main line. (Illinois Farm Bureau file photo)

**Cleaner Engines,
Better Performance**

- DieseleX® Gold
- AkroGold® Gasoline
- Suprex® Gold Lubricants

**Try our Synthetic
5W-40 for better
fuel economy**

Call Now! 800.924.9942

TUNSERV FS Serving Your Community Since 1928

PUBLIC POLICY UPDATE

Farm Bureau Schedules Staff Exchange Program for Legislators and Staff

On Tuesday, July 11 and Tuesday, July 25 Cook County Farm Bureau® is hosting a Cook County farm-business/food processor tour for Cook County government officials and staff.

The program is designed to provide Cook County legislators and their staffs with an enhanced understanding of Cook County farms-businesses and how they relate to Cook County government.

All tour sites will be located in Cook County. There are no repeat sites from prior programs.

On Tuesday, July 11 tour participants will depart from the Cook County Farm Bureau® office in Countryside. This tour will include a visit to Nufarm Limited in Alsip and Chicago Heights. Nufarm is one of

the world's leading crop protection and specialist seeds companies and produces products to help farmers protect their crops against damage caused by weeds, pests and disease.

On Tuesday, July 25 tour participants will depart from the Cook County building. This tour will include a visit to the North Lawndale Youth Farm and Incubator Program and Legends South Farm. Both sites are Windy City Harvest sites. Windy City Harvest is the Chicago Botanic Garden's urban agriculture education and jobs-training initiative.

This program is limited to Cook County legislators and staff. For additional information, contact the Farm Bureau at (708) 354-3276.



Senate Agriculture Committee member Senator Bill Cunningham visited local farms this spring to discuss spring planting and the issues impacting Illinois farmers. Pictured left to right is Board member Janet McCabe and Senator Bill Cunningham.

Farm Bureau Members Push for Regulatory Reform

Cook County Farm Bureau® members joined Farm Bureau members from across Illinois to fight for federal regulatory reform. One of Farm Bureau's top federal legislative priorities is regulatory reform. All Americans have an interest in a regulatory process that is transparent, is facts-based, respects the will of Congress and observes the

separation of powers in the Constitution.

Earlier this year, the U.S. Environmental Protection Agency (EPA) asked the public's input on which regulations should be repealed, replaced and modified. Cook County Farm Bureau members overwhelmingly mobilized and asked the EPA to tone

down the endless list of regulations that farmers face.

Copies of the comments submitted can be found at [regulations.gov/document?D=EPA-HQ-OA-2017-0190-0042](https://www.regulations.gov/document?D=EPA-HQ-OA-2017-0190-0042). Additional information on this federal legislative priority issue and others is available by contacting Bona Heinsohn at (708) 354-3276.



Senator Bill Cunningham visited with Cook County Farm Bureau® leader Gerry Kopping at his Cook County hay field. Kopping, a local horse stable owner, rents the field from ComEd.

FOR MORE INFORMATION CONTACT:

Bona Heinsohn

Director of Governmental Affairs and Public Relations

6438 Joliet Rd., Countryside, IL 60525 bona@cookcfb.org phone: (708) 354-3276 fax: (708) 579-6056

Please visit us on Facebook at [facebook.com/Cook.County.Farm.Bureau.IL](https://www.facebook.com/Cook.County.Farm.Bureau.IL) to be updated on agricultural issues and Cook County Government.

Summer Giveaway



Cook County Farm Bureau®'s Summer Giveaway is a: \$150 grocery store/farmstand gift card AND a \$100 food pantry donation to the food pantry of the winner's choice. The only thing individuals have to do is LIKE Cook County Farm Bureau's Facebook page and COMMENT ON or SHARE the post to enter to win. The winner will be chosen on June 15! Official contest rules are available at cookcfb.org.



By Bona Heinsohn

Manifolds, Manolos, and Manure

In the past year, our big, little boy and our blue-eyed girl have grown tremendously. Together,

they've scaled the treehouse—yes, we've literally found them sitting on the roof—and every slide in town. They've chased calves with their motorized toy tractor. Quite frankly no one's toes are safe when either of them are in the driver's seat.

The past year has undoubtedly highlighted their differences. Our blue-eyed girl is no longer the quiet little girl who entered the world one hot Father's Day. Instead she bubbles about her day before tearing through

her latest book. This week it's The Magic Treehouse Adventure on the Amazon. The week before it was Harry Potter and the Prisoner of Azkaban. She's all books. All Harry Potter. And all imaginary adventures even if it's past her bedtime.

Our big little boy on the other hand has made noise from the hot night he entered the world. His books of choice are: I Dig and Goodnight, Goodnight Construction Site. Clearly there's a theme. If you need another hint as to the theme, his favorite movie is "Cat Power" and his favorite TV series is "Bob the Builder." One of his favorite activities is moving hay bales with his grandpa's Gehl. Strangely, his sister also loves the Gehl but she'd rather be driving it around the farm than

simply moving hay bales.

Speaking of our blue-eyed girl, she still has her infamous "Macy" bunny. Fortunately, "Macy" hasn't disappeared lately. She may be embarrassed; our blue-eyed girl does like to dress her up. Our big, little boy also has a bunny. Two of them actually, "White New-New" and "New Hosse." Unlike his sister, he routinely loses his bunnies, usually in his Dad's truck or under his own butt.

The same big, little boy who melts at the mere mention of his bunnies is all big and tough at the sight of his dad's power tools. In fact, he's learned to scale the truck and open the toolbox, but he still has problems loading the bit. Fortunately, I snuck into his room and hid his dad's impact while he was

sleeping last week. It was a struggle to remove since he sleeps with it under his arm but tools belong in the tool box not in the bed. Our blue-eyed girl on the other hand rarely wants anything to do with her dad's tools instead she'd rather be hunkered down in her room playing with her American Girl dolls or be outside reading in the sun.

Every passing year has brought new challenges and new moments. At the end of every year, we silently ask for the opportunity to roll back time and live those same days over again.

Our children's love of animals and the farm makes our heart swell. Like their dad and grandpa before them, we hope they want nothing more than milk a cow. Drive a tractor. Farm.

MEMBER RELATIONS

11th Annual CCFB Family Celebration Picnic

Brookfield Zoo

Sunday, August 13, 2017

Zoo opens at 9:30 am

Lunch served at 12-noon until 2pm

The Member Relations Team is excited to invite you to the 11th Annual Family Celebration Picnic being held on **Sunday, August 13, 2017** at Brookfield Zoo. Brookfield Zoo is open from 9:30 am until 6:00 pm with lunch being served from 12-noon until 2 pm in our private pavilion.

Only 300 tickets available!

\$25 (\$40 value) Adults (ages 12–64)
\$18 (\$30 value) Children (ages 3–11) & Seniors (65 & ↑)
FREE (ages 2 & under)

The event will feature a picnic buffet lunch which includes:
 1/4 lb Burgers & Cheeseburgers
 Chicago Style Hot Dogs
 Country Style Fried Chicken
 Garden Salad
 Old-Fashioned Potato Salad
 Vegetarian Baked Beans
 Fresh Sliced Watermelon
 Assorted Sodas/Juices/Water
 Ice Cream Novelties

Each person will receive:
 • Admission to Brookfield Zoo
 • 1 parking pass per family
 • Admission to private pavilion for lunch from 12-noon until 2 pm

Brookfield Zoo
 3300 Golf Road
 Brookfield, IL 60513
 *Tickets and parking passes will be mailed a week prior to the event.

Ticket orders must be in our office by Wednesday, August 2, 2017.

Family Celebration Picnic Order Form

Name _____	Adult Ticket \$25.00 x _____ = _____ (12-64)
Farm Bureau Number _____	Child/Senior Ticket \$18.00 x _____ = _____ (3-11) (65 & ↑)
Address _____	2 & under FREE _____
City _____ Zip _____	Total amount _____
Phone _____	

Mail to: Cook County Farm Bureau, 6438 Joliet Rd, Countryside, IL 60525 or call 708.354.3276 to charge your Visa, MasterCard or Discover.

*Price includes food, parking pass and admission to Brookfield Zoo.

The event will be held rain or shine. No refunds. Tickets and parking pass will be mailed a week before the event.



GRAND SLAM GROUP FARM BUREAU



WHITE SOX VS. TWINS
 Wednesday, August 23, 2017 @ 7:10 P.M.
 Guaranteed Rate Field

SPECIALLY PRICED WHITE SOX TICKETS!

www.whitesox.com/fbn

On this special night the White Sox would like to offer specially priced tickets to all Farm Bureau members, their families and friends. Tickets start as low as \$12!

Orders will NOT be redeemed at the Guaranteed Rate Field ticket windows or the White Sox administrative offices.

ALL ORDERS MUST BE RECEIVED BY FRIDAY, AUGUST 11TH.

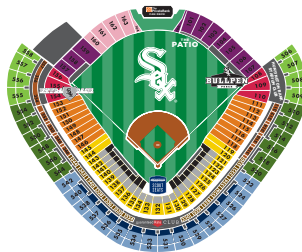
4 OPTIONS TO ORDER TICKETS:	# OF TICKETS	TICKET PRICE	TOTAL
WEB: Visit www.whitesox.com/fbn (Service fees will apply) PHONE: Call 866-769-4263 for Ticketmaster and give the "FBN" code. Service fees will apply. MAIL: with payment to: Chicago White Sox Sales Department ATTN: Farm Bureau GSG 333 W. 35th St. Chicago, IL 60616 FAX: with payment to: 312-674-5140		Lower Box @ \$27 (regular \$42)	
		Outfield Reserved @ \$14 (regular \$24)	
		Bleachers @ \$12 (regular \$22)	
		Upper Box @ \$12 (regular \$17)	
		Hot Dog Value Meal (hot dog, chips, soda @ \$7.50)	
		Car Parking @ \$20	
		Handling Fee (groups of 19 or less)	\$5
	Total Enclosed		

ALL GAME TIMES AND PROMOTIONS ARE SUBJECT TO CHANGE. NO REFUNDS OR EXCHANGES.

Name _____
 Address _____
 City, State, Zip _____
 Phone _____ E-mail _____
 Please charge my: Visa Mastercard Amex Discover
 Credit Card # _____ Expiration Date _____
 Signature _____

OR: Enclosed is a check or money order payable to the Chicago White Sox. (If check or money order is greater than total cost of the tickets, the difference will be made up in Comiskey Cash.)

Check # _____



Lower Box Premium Upper Box (Rows 1-6)
 Outfield Reserved Upper Box
 Bleachers Upper Reserved
 Lower Corners Upper Corners

FOR MORE INFORMATION, GO TO WHITESOX.COM/SPECIALEVENTS

MR

FOR MORE INFORMATION CONTACT:

Katie Smith, Director of Membership, 6438 Joliet Road, Countryside, IL 60525
membershipkatie@cookcfb.org phone: (708) 354.3276 fax: (708) 579.6056

Cook County Farm Bureau's Member Service Center is now on Facebook. We will keep you up-to-date on all upcoming events, new membership benefits, and programs. Look us up by searching "Cook County Farm Bureau Membership/Benefits."

Country Financial Representatives of the Month

The Financial Representative of the Month program is designed by Country Financial Agency Managers of Cook County to recognize overall Insurance Leaders in Life, Disability, Auto, Home, and Health production during the month. The agent earns the award through efforts to provide quality service to existing and new clients. Listed below are the various agents honored by their agency manager with the Financial Representative of the Month designation.



***Matt Whitsett**

Chicago North Agency, Victoria Nygren, Agency Manager
 Matt Whitsett has been named Career Financial Representative of the month for April 2017. His office is located at 4306 N. Lincoln Ave. in Chicago, IL. His phone number is (773) 267-1584. Matt has been a Career Financial Representative since November 2009.



Sylwia Grochowska

Chicago North Agency, Victoria Nygren, Agency Manager
 Sylwia Grochowska has been named Employee Financial Representative of the Month for March 2017. Her office is located at 3703 N. Harlem in Chicago, IL. Her phone number is (773) 628-2502. Sylwia has been a Financial Representative since February 2016.



John Doherty

Chicago Northwest Agency, Jack Smith, Agency Manager
 John Doherty has been named Career Financial Representative of the month for April 2017. His office is located at 10A W. Schaumburg Rd. in Schaumburg, IL. His phone number is (847) 519-9922. John has been a Career Financial Representative since May 1992.



***Alexander Cohen**

Chicago Northwest Agency, Jack Smith, Agency Manager
 Alexander Cohen has been named Employee Financial Representative of the month for April 2017. His office is located at 2435 W. Schaumburg Rd. in Schaumburg, IL. His phone number is (847) 891-3183. Alexander has been a Financial Representative since October 2014.



***Rob Sweiss**

Chicago South Agency, Marc Rogala, Agency Manager
 Rob Sweiss has been named Career Financial Rep of the Month for March 2017. His office is located at 6415 W. 63rd St. in Chicago, IL. His phone number is (708) 945-6969. Rob has been a Career Financial Representative since March 2012.



***David Jara**

Chicago South Agency, Marc Rogala, Agency Manager
 Daniel Jemison has been named Employee Financial Representative of the month for March 2017. His office is located at 6438 Joliet Rd. in Countryside, IL. His phone number is (708) 937-0023. Daniel has been a Financial Representative since September 2016.



***Jim Andresen**

Orland Park Agency, Cary Tate, Agency Manager
 Jim Andresen has been named Career Financial Rep of the Month for April 2017. His office is located at 17605 S. Oak Park Ave in Tinley Park, IL. His phone number is (708) 633-6490. Jim Andresen has been a Career Financial Representative since January 2003.



Sherif Tekal

Orland Park Agency, Cary Tate, Agency Manager
 Sherif Tekal has been named Employee Financial Rep of the Month for April 2017. His office is located at 9731 W. 165th St., Ste 36 in Orland Park, IL. His Phone number is (708) 995-0233. Sherif has been a Financial Representative since December 2015.



Gary Molenhouse

South Holland Agency, Jeff Orman, Agency Manager
 Gary Molenhouse has been named Career Financial Representative of the Month for September 2009. His office is located at 4749 Lincoln Mall Dr, Ste 310 in Matteson, IL. His phone number is (708) 679-1870. Gary has been a Career Financial Representative since September 2009.



Monica Moore

South Holland Agency, Jeff Orman, Agency Manager
 Monica Moore has been named Employee Financial Representative of the Month for March 2017. Her office is located at 4845 167th St, Unit 101 in Oak Forest, IL. Her phone number is (708) 560-7777. Monica has been a Financial Representative since April 2015.

*Indicates that this Financial Representative is a CCFB Financial Certified Representative. The Cook County Farm Bureau® Certified Financial Representative Program is designed to strengthen the partnership and relationship shared by Financial Representatives from Country Financial with the Cook County Farm Bureau organization.

“546,000”
is the number of
Cooperators sent to households
in the last year!

It's no wonder the classified
ad section is so popular
with our members!

Classifieds

All items listed are for the accommodation of the membership and without guarantee of the publisher.

Miscellaneous

High end gun collection for sale. Long guns & handguns, home defense shotguns & AR rifles. Various taxidermy animals for sale. Hunting items such as decoys, roboducks, and other forms of hunting gear for sale. Also selling a Swedish made partner masonry saw, electric, Model K2300e1. Exc. condition, used twice. Paid \$1,200, will take \$550 OBO. Call Jim for details: 773-581-4400.

Set of 4 tires, Goodyear Wrangler 265/70R16 mounted on alloy rims from 2015 Chevy Colorado. Call 630-871-2954. See photo on website.

Misc items for sale: Computer Armoire, oak. Can be made into a wardrobe. 67" H X 49"W X 23.5"D. \$150. Pennsylvania House 10 Piece Dining Room Set, table has 2 extra leaves, custom pads and linens, 2 Captain chairs and 4 side chairs, the server opens and the hutch has a dimmer light, \$800. Magnolia Crimson picture is 32" H X 38" W, artist is Igor Levashov \$50. The Gate picture is 32 H X 27" W \$40. Please contact Pat at 630-605-6762 and leave a message. See photos for all items on website.

Teeter inversion table model EP970. See Teeter website for description and specifications. Used only five times. Retail for \$550, asking \$375. Located in Streamwood, IL. Call 630-222-0257.

Misc. items for sale: Cute rocking horse \$25. Antique rocking chair \$35. Laminator \$20. Call 708-371-0163.

DP Fit for Life airgometer exercise bike. Tells distance, speed. \$100 OBO. Call 708-359-5408.

Misc. items for sale: 1-54" H.D. home-made lawn roller \$100. 1-Vintage Simpson grocery butcher scale \$100. 1-K-12 cut-off saw complete motor only, \$40. Call 815-485-5901.

6 (half hour) individual personal training sessions w/a personal trainer. Valued at \$195. Best offer. Phone 847-891-5582. Located in Rosemont, IL.

5' almond color polyvinyl fence. 179.5' plus two 5' wide gates with standard hardware and posts. Scallop top with gothic style post caps. Dismantled, needs to be cleaned. This is not a big box store fence, \$2,000. Also, antique 1950's American Seating Co. desk \$75. The desk is an old time school desk w/ seat attached. Lid lifts up. Call 708-349-0627.

2 Bassett bookcases/hutch, golden oak, 74" x 29". Price negotiable. Please call 708-460-8195.

Oak kitchen cabinets with 4 drawer pantry, fruitwood stain complete with white/gray Formica counter tops, stainless steel double sink and Samsung over-the-range microwave. Excellent Condition. \$1,000. Pictures available, call 708-710-6805.

Pro-lift 4-ton hydraulic jack \$275 OBO; 6-step all aluminum rolling ladder w/removable platform. 2 shelves. \$275 OBO. Call 815-485-3319.

30 gallon air compressor – used less than 10 times, \$300 OBO, needs new petcock. Metal lathe \$500 OBO. WWI Vickers machine gun parts, crate dated w/parts list inside \$300. Call 708-309-3015.

Lawn Christmas "Toy Soldier" decorations, light up, 2 1/2 to 3 1/2 ft. tall: 5 with black hats, 2 with white hats and one major with white hat and mustache (taller too). Excellent condition, \$250 OBO. Please call 708-826-0000.

Motorized Vehicles Boats and Accesories

2002 Jaguar XKR convertible super charged, limited edition, 17,000 original miles. Every available option, pristine condition, new tires. \$32,500 OBO. Call 773-581-4400.

Electric Scooter \$125.00 Leoch DK24250-3 e-scooter with headlight, turn signals, brake light and horn. Includes charger and tool kit. Max. Speed 12mph. Dimensions 46"L X 25"W X 43"H. Call 224-365-4350. See photo on website.

1979 BMW R650 motorcycle, includes: faring, saddle bags, new seat & stock seat, rain cover, tank bag, & extras. Excellent touring bike, 62K miles \$2,000. Call 708-841-6699.

H.D. Ford ranger truck bed \$50. Car ramps \$15. Call 708-371-0163.

1946 Lincoln convertible with V12 short block & 2 extra fenders (90% chrome refinished). No title \$7,000. Call 847-814-5115.

Battery operated Elite traveler scooter four wheels, model 74, weight capacity 325 pounds. Like new \$600. Call 708-359-5408.

2008 Four Winds 21' Siesta B+ Class RV on a Ford Triton V-8, under 37,000 miles, loaded, excellent condition, \$33,500 OBO. Call 815-485-3319

Tractors/ Farm Equipment/ Snow Blowers

Model S-140 Toro snow blower \$45. Call 708-371-0163.

Reclaimed barn wood, various widths and lengths available. Also available: reclaimed barn wood beams of various sizes and rusted roof tin. Also selling wheat straw, clean and bright, \$3.50/bale. Call 708-710-6805

Real Estate For Sale/Rent

100 acres in Demming, New Mexico: 88,030. 2-10 acre tracts and 2-40 acre tracts, priced at \$1,200 per acre. Next to Florida Mountains. Call 708-417-0303.

Beautiful custom built home: 3 bedroom, 2 bath ranch home, 3 car garage, full basement, many upgrades. 10 yrs old, granite countertops, cherry cabinets (kitchen), all stainless steel appliances. Located in Hampshire, IL. \$339,900. Call 847-683-5023.

Secure outside parking space available in Palos Hills. Perfect for small business. Owner onsite 24/7. Call Carolyn 708-974-3067.

Vacation Sales/ Rentals

Great place to spend the summer (winter too if you're adventurous). This spacious cabin is situated on 5 acres and only minutes from the city of Marquette. Cabin features 2 bedrooms, an open living/kitchen area, a cozy wood stove and a sliding glass door overlooking spring fed pond fish for perch, generator included. 4-wheeling and snowmobiling literally out your back door. \$64,900. Please call 847-909-0181.

Wanted

Wanted to buy: Old balloon tire bicycles w/ tool or horn box, also front spring fork type: Schwinn, Elgin, Ranger, Monark, Silver King, J.C. Higgins, etc. Also older boys 20" banana seat models. Call 708-361-8230.

Wanting to buy your HO scale or N scale electric train engines, cars, buildings, or anything train related. Do you have electric trains in your closet, basement, crawl space, attic or garage that you're not using? I buy train items from just a few pieces to hundreds of pieces at a time. Why sell them bit by bit, I'll offer you a price on all you have! I'm retired and just enjoy trains. I realize that some may need work from sitting for a long time, but I have the time to fix them! TURN THOSE UNWANTED TRAIN ITEMS INTO CASH, and give me a call! I also buy slot cars. Call 630-272-4433 ask for Ron. Thanks!

Wanted to adopt: Kitten – male or female. Prefer blue eyes/gray & white fur. I lost my beautiful cat Simon recently to chylothorax, and I miss Mr. Blue Eyes! Call 630-408-0917.

Instant Cash for your car or truck, running or not. Top dollar paid. Call 224-465-4733.

Wanted: 1972 & older cars & trucks, running or not, for parts. 708-439-9770.

NEW If you have a photo of the item(s) that you are selling (Auto, Home, Furniture, etc.) you can email it to us and we will include it on our 'Classifieds' page on our website along with your ad. All ads that we receive for the Co-Operator are also listed on our website at cookcfb.org/membership/classifieds. Email your photo along with your ad to membershiplinda@cookcfb.org.

FREE Classified Ads

for Cook County Farm Bureau members

All Cook County Farm Bureau members may run four non-commercial classified ads annually free in the Cooperator. Only items of personal property will be accepted. **Ads must be in the office by the 15th of each month.**

Category: For Sale Misc. For Rent Wanted

Name _____

Farm Bureau # _____ Phone _____

Ad _____

*Please be sure to include a contact phone number where interested buyers can contact you. Ad can be typed or written. PRINT CLEARLY. (If not enough room, put on separate sheet)

Complete the above form and mail to:
Cook County Farm Bureau, 6438 Joliet Road, Countryside, IL 60525.
You can also fax your ad to (708) 579-6056 or email to membershiplinda@cookcfb.org
Non-member ad rate: \$.75 per word; \$15.00 minimum.

Mark your calendar for the

2018 “Farming for Our Future” Gala

March 10, 2018 at 6:00 pm

Ruffled Feathers Country Club, Lemont

**Fun, Food, Festive
(Did we mention fun?)**

**A benefit event for the
Cook County Farm Bureau Foundation®...
Planting Seeds of Agricultural Literacy in Cook County**

The Cooperator, official publication of the Cook County Farm Bureau, does accept paid advertising. A copy of the rate card may be accessed at www.cookcfb.org in News and Views or call the CCFB office at 708.354.3276 for a copy. The publication goes to more than 40,000 households each month.

Soil Test Kits on Sale



Why should I test my soil? Soil testing takes the guess work out of soil improvement, growing plants and fertilizer recommendations insuring plant growth to its fullest potential.

How do I get a soil test kit? Contact the Cook County Farm Bureau® at 708-354-3276 to request your soil test kit. You can purchase your kit by using a credit over the phone or mailing in a check. Upon payment, your soil test kit will be sent to you. Pricing is as follows: One sample: \$20.00 (\$30 for non-members), Two samples: \$30.00 (\$40 for non-members). Lead testing is also available: \$37.00 for members (\$42.00 for non-members). The kit includes: soil sample bag(s),

instructions on how to take a soil sample, questionnaire about your soil samples and a shipping box with a pre-paid USPS label. You will receive your test results and basic recommendations within two weeks.

Who can assist with results? Our Master Gardeners Resource Center can! Master Gardeners are available in the Cook County Farm Bureau suite located at 6438 Joliet Rd., Countryside, IL during the office hours of 9:00 AM to 1:00 PM on Mondays and Thursdays through November 13. To contact a Master Gardener, call the Cook County Farm Bureau at 708-354-3276 or email: mastergardener@cookcfb.org.



2017 Recipe Collection
Cook County Farm Bureau®
Cook Fresh Locally
6438 Joliet Rd., Countryside, IL 60525
708.354.3276 • www.cookcfb.org

The 2017 Cookfresh® Recipe Collection Is Here!

Recipes focus on cooking with the freshest, locally grown ingredients and are submitted by Cook County Farm Bureau members!

**To receive a free copy, email:
membershiplibbie@cookcfb.org
or call 708.354.3276**

**To download a copy online, visit:
www.cookcfb.org/buy-local/recipe-collection**

Summer Fun!

Keep the Cook County Farm Bureau® in mind when making your entertainment and travel plans this summer!

Call us at (708)354-3276 or visit www.cookcfb.org!



Members can save on ticket prices. Click on the Member Benefits link on our website at cookcfb.org for pricing and to purchase your tickets online.

Discounted Movie Tickets!





Contact our office for ticket prices and to purchase your tickets at (708)354-3276.

Save 20% with Choice Hotels, Wyndam Hotel Group & Great Wolf Lodge Wisconsin Dells





Six Flags Great America in Gurnee 1-Day General tickets are \$45.63* plus tax (ages 3 yrs & up) *\$8.99 processing fee per on-line order also applies

Tickets bought directly from Farm Bureau are \$47.00**
**Tickets bought over the phone or in person at CCFB do not have a processing fee. Ages 2 and under are free. Tickets DO NOT include Hurricane Harbor.

Save up to 25% with    

Theme Park Tickets



Six Flags Great America in Gurnee, IL
Online 1-Day General tickets: \$45.63* (ages 3 yrs & up)
**\$8.99 processing fee per on-line order, plus tax*
Tickets bought directly from Cook County Farm Bureau® are \$47.00**
 **Tickets bought over the phone/in person are slightly higher but there is no processing fee or tax.



Raging Waves, Yorkville, IL
1-Day General Admission Tickets: \$18.00 Ages 2 and under are FREE
 Tickets only available at the Cook County Farm Bureau office



Silver Dollar City, Stone City, MO
Adult 1-Day: \$52.70, Child 1-Day (Ages 4-11): \$43.35
 Ages 3 and under are free.
 Tickets for Silver Dollar City are only available online.




Santa's Village, East Dundee, IL
1-Day: \$16.25 Ages 2 and under are free.
 Tickets for Santa's Village are available online and at the CCFB office.

For pricing and to order tickets online for Six Flags Gurnee, Silver Dollar City and Santa's Village visit cookcfb.org and click on 'Member Benefits'.

To order tickets by phone call (708) 354-3276.

\$\$\$Receive discounts on your auto insurance\$\$\$

Defensive Driving Course



The Cook County Farm Bureau® and Country Financial will be hosting a Defensive Driving Course on July 19, 2017 & July 20, 2017 from 10:00 am to 3:00 pm at the CCFB office in Countryside. Both days must be attended to receive the certification. Cost for the class is \$15 for members and \$25 for non members (includes course materials and lunch both days).

The course explores the causes of vehicle collisions (mental, physical and environmental factors) and teaches how defensive driving principles can prevent most of these costly incidents. Upon completion, you may be eligible for a discount on your auto insurance. Rated drivers 55 and over who have not had a motor vehicle accident or violation within the past 12 months are eligible. The savings will extend for 3 years on the policy.

This program was developed by the National Safety Council and will be taught by safety specialist, Doug Sommer, Pekin, Illinois. The course, which is conducted in a classroom setting, is very informative, entertaining and relevant to today's driving environment and standards. An exam is not required to complete the course or receive certification.


Reservations are required and class size is limited. Call the CCFB at (708) 354-3276 to make your reservation or for more information.

Cook County Farm Bureau® is sponsoring its first ever

Cook County FARM CRAWL!



SAVE THE DATE: The Cook County Farm Bureau is sponsoring its first ever FARM CRAWL on **Saturday, August 19, 2017**. The Farm Crawl is self-guided with no set schedules allowing members and the public flexibility to choose the farms and agri-businesses to visit during the CRAWL times. Full program details, and participating farms and business information will be available in the coming issues as well as on the Cook County Farm Bureau Events Calendar at www.cookcfb.org/Events. The Farm Crawl is an event all ages can enjoy – we hope to see you on the farm on Saturday, August 19!



Cook County Farm Bureau® Volunteer of the Year Application

The Cook County Farm Bureau® (CCFB) Volunteer of the Year Award is an award which recognizes individuals from the CCFB who have made a significant contribution to organization through his or her dedication to, and support of, the accrediting process.

“We would like to recognize those individuals who give their time and talents to promote the goals of agriculture in the Cook County Farm Bureau.”—Jim Bloomstrand, Chairman of the Member Relations Team

The program will run on an annual basis from September 1- August 31. All entries will be submitted to the CCFB Member Relations team to screen candidate forms. After the team screens the forms, they will be presented to the CCFB board for recipient approval and a winner will be selected.

Criteria/qualifications

- Member of Cook County Farm Bureau
- Demonstrated exemplary leadership and service to agriculture
- Demonstrated willingness to promote agriculture
- An individual who assisted Cook County Farm Bureau on a major effort
- Not necessarily a farmer
- Recruitment of CCFB members

Eligibility

- CCFB Board and staff members are not eligible

Please visit our website at cookcfb.org for an application.

Read Our Blog

For more articles that are food, farm and membership benefit related, visit our blog at www.cookcfb.org to read the following additional “Co-Operator” articles that didn't make it in our paper:

- IAA Credit Union is Growing
- American Farm Bureau Foundation for Agriculture's Recommended Reading
- Immigration Attorney to Farmers: Be Prepared

Also, be sure visit our Facebook page for up-to-date event information, photos from events, and more! Search “Cook County Farm Bureau” on Facebook.

Trivia

- It takes 12 pounds of whole milk to make 1 gallon of ice cream
- Canada, Japan and Mexico are the largest markets for US dairy exports