



CO-OPERATOR

To serve all our members of the Cook County Farm Bureau® with meaningful and beneficial programs that reflect our agricultural heritage.

Mark Your Calendar

JULY

- 2 AITC Virtual Field Trips Continue Pg. 6
(Thursdays in July)
- 4 AITC Teacher Training Sessions Continue Pg. 6
(Tuesdays in July)

Save the dates

AUGUST

- 18/19 Defensive Driving Course Pg. 12
- TBD Virtual Farm Crawl Pg. 12

For participation details on these programs and activities, check out the related information in this publication, go to www.cookcfb.org, or contact the office at 708-354-3276. You can register for most programs by using the member service center at www.cookcfb.org.

Historical Question of the Month

See page 2 for a historic photo from the CCFB's first 100 years and respond to the question related to the photo.

June Winner is Jeffrey Zimmerman



Last month's question: Lynn and Pat Landmeier from Des Plaines captured their second straight bowling title at what tournament?

Answer: Illinois Farm Bureau Sports Festival.

But Wait, There's More!

Go to www.cookcfb.org for these extras...

- Farm and Food Bytes
- Member to Member Buy Local
- The Dirt on Perspective-taking by Adrienne DeSutter
- IFB Seasons Eatings
- May Co-Operator Shop Local Pull Out
- Eden Place Farms, Cook County farm sows vegetables



Janet McCabe, President of the Cook County Farm Bureau, sent us this picture with the quote "Back to my happy place! No masks in sight," as she rakes hay from her tractor seat. McCabe, in addition to farming with her husband and family, has served on the front lines of the pandemic as a critical care nurse.



In celebration of our 100th anniversary, Cook County Farm Bureau planted a White Oak tree. We look forward to celebrating our golden anniversary with you as soon as its safe to do so.

Seeking Associate Members to Upgrade Their Membership to PM



Professional (PM) memberships are designed for those individuals who do not farm but work within the agriculture industry. The membership dues are only \$36 per year. Associate members that are working in an agriculture related job or an agriculturally related career are eligible for an **upgrade of membership** from an Associate membership to Professional membership.

The PM membership is designed for those that may have farm connections and seeks to offer that greater connection to the world of agriculture, local farms, and food. As a PM member, you will be provided opportunities to advocate for area farms and farmers, promote local foods in global trade, support farmland protection, champion hunger relief and awareness, protect natural resources, and defend property rights.

This membership upgrade provides the opportunity to serve on the Board of Directors, participate as a part of our leadership teams, join the FB ACT (Agricultural Contact Team) to communicate to legislators and policymakers, provide input and direction on policy matters, vote in Cook County Farm Bureau organizational matters, and receive the award-winning FarmWeek publication which will keep you up-to-date on the world of farming in Illinois.

And, from now through August 31, 2020, the first 15 new PM members to join or reclassify from A to PM will receive a special gift, a pillow pet tractor (a stuffed chenille toy from AGCO—Oliver, Masset-Ferguson, or Challenger).

Should you choose to upgrade, your membership dues will remain unchanged until the next renewal period beginning November 1, 2020.

This is a great opportunity to step into more of a leadership role within the organization. We welcome your membership reclassification from an Associate member to a Professional member.

Who We Are...

Cook County Farm Bureau® is made up of many members including farmers, landowners, foodies, greenhouse operators, specialty growers, food consumers, and customers of the Farm Bureau's affiliated companies (COUNTRY Financial®, Conserv FS, IAA Credit Union, etc.). We bring together many members with diverse backgrounds and food interests to support the success of local farmers and to keep agriculture present and strong in Cook County.

This Co-Operator publication is designed for members to share more about how Cook County Farm Bureau is working for local farmers and agriculture and to help our members know more about farming, food, fiber, and biofuels. As an added value, we provide great membership deals, savings, discounts, benefits, programming, and activities that reflect our agricultural heritage and members' modern expectations.

Please enjoy reading and thank you for your support of area agriculture and your membership!

Area Farming Update – What’s Happening On the Farm



Early soybeans growing (Photo by Catrina Rawson, IFB)

A major part of the greenhouse season is now complete with Easter, Mother’s Day, and spring gardening plantings complete. The Shelter in Place had a significant impact on sales around the Easter holiday. Once the governor clarified that these essential businesses could serve customers in person, the public responded by seeking access to a variety of different plants. Wholesale markets suffered but the retail market was strong.

Farmers’ markets and farm stands are gearing up for summer vegetable sales. Farmers are expecting strong support with public interest and demand in locally produced fruit and vegetables remaining high. The state of Illinois phase 3/phase 4 reopening provides

additional confidence for individuals to venture to these vendors and farm producers.

April soil conditions were favorable for some area farmers to plant corn, soybeans, and vegetable crops. May rains delayed much planting through the month, but weather pattern shifted in June allowing most farmers to complete their planting of crops. The first half of June has brought “precipitation deficits” for many parts of Illinois including the northeast portion of the state.

First cutting of hay for livestock feed has wrapped up. Yields are reported to be “average”. Winter wheat is maturing, and harvest is anticipated for early July. Straw harvest baling to commence immediately following.

Historical Question of the Month



Former Farm Bureau Directors Don Zeldenrust, James Goebbert, Nick Skoufes and Ray Nykaza worked a display at what location in Chicago? The display featured vegetables grown in Cook County by Cook County farmers.

Answers (if not at the tip of your tongue) are available online at cookcfb.org/ccfb/ourhistory. Call the Farm Bureau at 708-354-3276, fax your answer to 708-579-6056. or email fbcooperator@gmail.com to enter the drawing for a \$25 gas card. (Please include name, FB#, and phone number).

Check next month’s publication for the answer and the next historical question of the month.

5 Things Members Should Know About the Cook County Farm Bureau’s Affiliation with Country Financial®

1. Your Cook County Farm Bureau membership gives you access to the many financial services of this company whose mission is to “**Build Financial Relationships to Enrich Members’ Lives.**”

2. The IAA Credit Union provides modern banking services through mobile devices, computer access, and remote connection as well as traditional ATMs and a physical facility.

3. The IAA Credit Union offers industry low rates for auto loans, mortgages, and refinancing.

4. The IAA Credit Union can help members save money through access to various designed savings “clubs” including Alumni Club, Christmas Club, Kids Club, Vacation Club, Savers Club, etc.

5. The IAA Credit Union Certificates of Deposit yields are typically higher than the interest rates of most banks.



Gratitude Journal

Each month, there are people that go out of their way to lend a hand to help with our cause in many ways, both big and small. We appreciate it greatly!

The Cook County Farm Bureau thanks...

James DeYoung for his amazing support of the Food Pantry Grant Program and to those members who have also been able to provide additional support to the expanded need faced by area food banks and support services.

All of our members who visited our local greenhouses and garden centers these past few months. Your dedication and support is invaluable.

Thank you to our Ag Literacy partners who have helped us provide educational resources through the end of the school year for our Cook County teachers and students including Illinois Ag in the Classroom, Historic Wagner Farm, and Communities in Schools of Chicago.

Long time member, Pam Bruns, for giving a CCFB membership as a gift! Not only did she give the gift of amazing discounts but also the gift of agricultural. Ms. Bruns also received Farm Fresh Funds to redeem at a local greenhouse and other farm businesses!

COOK COUNTY FARM BUREAU

FOOD PANTRY GRANT

HELP US TO SUPPORT LOCAL COOK COUNTY FOOD PANTRIES.

**Second Round of Grants Available
- Extended until July 17-**

Food Pantry Call to Action
Apply at <https://bit.ly/2L1pqGA>. Food pantries can self-nominate. Grant applications are due before midnight on Friday, June 17. Grant awards will range between \$150 to \$600.

Community Call to Action
Nominate a local food pantry for grant funds. Apply at <https://bit.ly/2L1pqGA>.

Member Call to Action
Please consider donating funds to this program. Donations may be tax deductible and will solely benefit Cook County food pantries.



The impacts of COVID-19 will be felt for months to come. Families are suffering. Businesses are suffering. Farms are suffering. Together with members, Cook County Farm Bureau® is poised to provide local food pantries assistance during this difficult time in Illinois and the entire United States.

DONATIONS CAN BE MADE BY MAILING A CHECK TO THE CCFB OFFICE OR BY CALLING IN WITH A CREDIT CARD.
PLEASE MAKE CHECKS PAYABLE TO: COOK COUNTY FARM BUREAU®.
ALL PROCEEDS WILL BE DONATED TO LOCAL FOOD PANTRIES.

COMPANY/INDIVIDUAL NAME: _____

CONTACT PERSON: _____

PHONE: _____ EMAIL: _____

MAILING ADDRESS: _____ CITY: _____

STATE: _____ ZIP: _____

www.cookcfb.org | (708) 354-3276 | 6438 Joliet Road, Countryside, Illinois | ccfb@cookcfb.org

Co-Operator

published monthly
Cook County Farm Bureau
6438 Joliet Road, Countryside, IL 60525
(ph) 708-354-3276 (fax) 708-579-6056
(e-mail) ccfb@cookcfb.org (website) www.cookcfb.org
USPS No 132180 Periodical Postage Paid at LaGrange, IL 60525 & additional mailing office

Editor Bob Rohrer	Copy Analyst Ashley Christensen	Copy Development CCFB Office Staff
-----------------------------	---	--

Officers & Directors

Janet McCabe, President		
Michael Rauch, Vice President		
Ruth Zeldenrust, Secretary-Treasurer		
Dan Biernacki	James Bloomstrand	Roger Freeman
James Gutzmer	Patrick Horcher	Gerald Kopping
Todd Price	Tim Stuenkel	Mark Yunker

Farm Bureau Manager
Bob Rohrer

Office Staff

Jill Drover	Bob Heine	Bona Heinsohn
Diane Merrion	Juanita Ramos	Melanie Senne
Katie Smith	Kelli Villarreal	Debbie Voltz

Affiliated Companies

Jeff Orman.....	Insurance Agency Manager, South Holland
Victoria Nygren	Insurance Agency Manager, Chicago North
Jeff Maxson	Insurance Agency Manager, Chicago South
Jack Smith.....	Insurance Agency Manager, Chicago Northwest
Sharon Stemke	Insurance Agency Manager, Chicago Northeast
Cary Tate.....	Insurance Agency Manager, Orland Park
John Tuttle	General Manager, Conserve FS

Postmaster - Mail Form 3579 to 6438 Joliet Road, Countryside, IL 60525
“Co-Operator” (USPS No 132180) is published monthly as a membership publication for \$2.50 per year to members as a part of their annual membership dues by Cook County Farm Bureau, 6438 Joliet Road, Countryside, IL 60525. Periodical postage paid at LaGrange, IL and additional mailing office. Postmaster: send address changes to the Co-Operator, 6438 Joliet Road, Countryside, IL 60525.

The Co-Operator, the monthly publication of the Cook County Farm Bureau®, is available to members through mail delivery, email, or by viewing online at www.cookcfb.org. Members that wish to receive the publication solely by email can let us know by sending an email to juanita@cookcfb.org with the subject: E-Cooperator.



Downwind

by Bob Rohrer, CCFB Manager

“Strawberry Fields forever”

A recent road trip with my wife to see my parents at the farm in downstate Illinois was a pleasant reprieve from the stay-at-home, mundane months of the stay-at-home order. We had not seen them face-to-face since Christmas...not good execution of one of my New Year's resolutions. The trip brought back some suppressed memories.

Mom continues to put in a sizable vegetable garden (although it has shrunk slightly in recent years). If I had to estimate its size, 80' by 20' would come out of my mouth. That's a lot of radishes, lettuce, peas, beans, potatoes, tomatoes, onions, radishes, zucchini, cucumbers, sweetcorn, broccoli, and popcorn. She normally tries to produce a couple "experimental" vegetables that I've never heard of as well.

As we arrived at the farm, Mom reported that she had just come in from the garden from picking fresh strawberries. Did I mention that Mom also has a small orchard and a strawberry patch (I think she took out the raspberry patch)? The harvested strawberries were piled in the kitchen in various containers.

This was quite convenient as I, in recent years, have regained my interest in consuming strawberries. Now, you might ask, "Why did I lose interest in consuming strawberries previously?"

Strawberries and I go way back. Strawberries were a staple in the Rohrer house in many forms growing up, for snacking, topping cereal, salads, ice cream topping, pie, crisp, jelly and jam, and a host of other tasty food products.

Mom and Grandma had strawberry patches and when those patches didn't yield the necessary strawberry volume, we went to the Strawberry U-Pick farm down the road two miles for additional supply.

When I reached the "ripe" old age of 14, I was offered a job by that Strawberry U-Pick farm to weed and help harvest the four acres of strawberries. This was my first "paying" job (at \$2.50 per hour) after years of toil without pay from Mom and Dad (except for that comfortable bed, 3 squares per day, and all the milk I could drink from Flower the cow).

That is when I gained some useful insight about life:

- I discovered Social Security withholding from one's paycheck at age 14 was not something I appreciated.
- I discovered I appreciated a 12-speed bicycle over my banana seat 1-speed version when it came to transportation to/from the strawberry fields. The first thing I purchased with my newly found wealth was a 12-speed.
- I discovered I preferred working with my brothers over working alone by myself; I soon talked them into joining me in the fields.
- I discovered sitting in the middle of a strawberry field all day, hunched over in the heat, was not my preferred future no matter how much I enjoyed working with my brothers and listening to good tunes.

And my musical tastes blossomed:

- I discovered I enjoyed listening to music as a distraction from weed extraction and finding reasons not to pick ripe berries.
- I discovered that extra batteries were a necessity for the cassette tape player if you plan on rocking all day in a strawberry field. and, blaming your brothers for not bringing the extra batteries adds to the silence of the day..
- I discovered that I loved the Eagles, CCR, REO Speedwagon, ELO, the Cars, Styx, Genesis, Van Halen, Foreigner, Pat Benatar, and more (sorry – not the Beatles). It was quite a change of audio scenery from the "crack of dawn" and "noon break" country radio station preferred by my parents for the weather, Orion Samuelson farm shows, Paul Harvey's "Rest of the Story", and all the agricultural commodity market updates.
- I discovered that there are some things too **good to be true**. The 2nd thing I did with my newly found wealth was join the Columbia House Cassette Club's 11 cassettes for only 1 cent if I agreed to buy another 6 additional cassettes over the next year.
- I then discovered that if I did not stop the cassette tape delivery on a timely basis, I would receive an overpriced cassette tape of music from an artist that I had no interest in.
- In addition, I discovered this thing within a contract called "fine print" as well as "shipping and handling".

During the course of that job, I also discovered that strawberries, no matter how sweet, had lost their appeal.

Over the years, we all know that some things change while others stay the same. Now, I'm thinking...

- Social Security sounds nice.
- Biking remains a great way of locomotion.
- My brothers still work too hard for me to keep up.
- I prefer listening to the country station, Orion Samuelson, and I wish Paul Harvey could still tell me the rest of the story.
- The cassette tape has moved to this thing called "the cloud" (whatever that is).
- After working in an office all day, I love to work outside in the heat in the garden and on manual projects.
- Most importantly, the taste, appeal, and temptation of homegrown, juicy ripe strawberries is back!

Thanks, Mom, for the heap of strawberries and great memories!

Bob can be reached at brohrer@cookcfb.org



Facemasks, social distancing, and hand sanitizer is commonplace in any business this summer. Cook County Farm Bureau obtained a quality supply of hand sanitizer from Farm Bureau member business Whiskey Acres.

Recipe of the Month: Gazpacho 2002

Ingredients:

- | | |
|--|------------------------|
| 4 c tomato juice | |
| 2 c peeled, seeded, chopped fresh tomatoes | |
| 1 c diced green pepper | 1 c diced celery |
| 1 c diced seeded cucumber | 2 minced garlic cloves |
| 1/2 c diced onion | 1/3 c tarragon vinegar |
| 2 T minced fresh parsley | 1 T minced chives |
| 1 t Worcestershire sauce | 1 t salt |
| 1/2 t pepper | 2 T vegetable oil |

Directions: In large bowl, combine everything but the vegetable oil. Cover and chill for at least 4 hours. Stir in oil before serving. Serve cold. Makes 8 servings.



The 2020 Cookfresh Recipe Collection is a special "throwback" edition for our 100th year with recipes selected from decades of submissions to commemorate our Centennial! Recipe Booklets are available now! To receive a copy of the 2020 Cookfresh Recipe Brochure, Email membershipdebbie@cookcfb.org or call 708-354-3276 or find it online: <https://cookcfb.org/discover-local/recipes>.

Your Orland Park Agency



Cary Tate
708-226-1111
Agency Manager
Orland Park, IL



Piero Setta
708-226-0431
7601 W. 191st St
Tinley Park, IL



Jim Andresen
708-633-6490
17605 S Oak Park Ave
Tinley Park, IL



Thomas Geraghty
708-425-9700
5003 W 95th St
Oak Lawn, IL



Mark Wright
708-403-2416
7601 W. 191st St
Tinley Park, IL



George Parthemore
708-226-1896
9432 W 143rd St
Orland Park, IL



Mike Skrabis
708-226-1666
9731 W 165th St
Orland Park, IL



Tony Palumbo
708-403-5708
7601 W. 191st St
Tinley Park, IL



Mike Spadoni
708-425-1825
3923 W. 95th St
Evergreen Park, IL



Bob Johnson
708-429-9422
17605 S Oak Park Ave
Tinley Park, IL



Dan Stumpf
708-614-1688
17605 S Oak Park Ave
Tinley Park, IL



Bill Thompson
708-361-1304
106 Stephen St
Lemont, IL



Nora Beverly
708-429-7789
1938 Lincoln Highway
New Lenox, IL



Brian Zielinski
630-257-6100
106 Stephen St
Lemont, IL



Nick Burke
708-425-1816
3923 W. 95th St
Evergreen Park, IL



Mike Thauer
708-425-1559
3923 W. 95th St
Evergreen Park, IL



Erica Storrs-Gray
708-671-1465
12130 S Harlem Ave
Palos Heights, IL



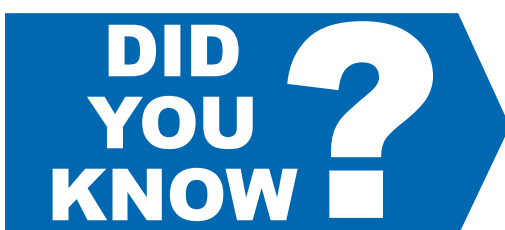
Terry LaMastus
708-754-5900
3308 Chicago Rd
Steger, IL



Joe Voves
708-425-1527
3923 W. 95th St
Evergreen Park, IL



9731 W 165th St Suite 36 Orland Park, IL 60467
708-226-1111



There are 321 farmers' markets registered in the state of Illinois with over 8,600 farmers' markets registered throughout the United States.

MIDSUMMER GARDENING FAQ'S

The University of Illinois Master Gardener Help Desk housed at Cook County Farm Bureau has helped many members with their gardening questions. Here are some popular questions/concerns that may be of interest to you too! Once again, we thank U of I Program Coordinator, Horticulture, Margaret Burns Westmeyer, for sharing her expertise.



Sun vs Shade...Degrees of Shade for the Garden:

A quick list to help categorize sun/shade from Penn State University:

- Full sun is six or more hours of direct sunlight per day. This does not need to be continuous; for example, there could be four hours in the morning, shade midday, and three or four hours of sun in the afternoon. It must be direct, full sun.
- Partial sun is between four and six hours of sun a day.
- Partial shade is two to four hours of sun per day.
- Shade, in gardening terms, means less than two hours of sunlight a day.

You may come across the terms light shade, moderate shade, and heavy shade.

For further info and reading, here is the link to this excellent article on sun/shade categories: <https://extension.psu.edu/planting-in-sun-or-shade>.

Centipedes, stink bugs, and tiny little moths, OH MY! Help with pest management:

Here is great information regarding centipedes: <https://bit.ly/3i80m4L> and <https://bit.ly/2BK3m8>

Stink bugs will indeed stink if they are crushed. The majority of stink bugs brought into our office were the Brown Marmorated Stink bug. Here is information for BMSB:

<https://bit.ly/2Nz0vjK>

For the small moth-looking bugs you are seeing in your bathroom, it could likely be drain flies.

Here is helpful information from Maryland Extension:

<https://extension.umd.edu/hgic/topics/drain-flies>



Growing Asparagus from Crowns:

Here is excellent information from the Chicago Botanic Garden on asparagus:

"You can start asparagus by seed, but that will add a year to the establishment of the bed. Plant the crowns in trenches that are at least 10 inches wide and 6 inches deep. Spread the roots and center the buds slightly higher than the roots, making sure they are facing up. Space the crowns 12 inches apart. Cover the crowns with 2 inches of soil, adding more as the spears grow. This planting process gets the crown deeper into the soil without forcing the plant to push through 6 inches of soil all at once. Growth will be spindly for the first couple of years. Plan to harvest in year three when the diameter of the stems is larger than a pencil." <https://bit.ly/3icX5S7>

More information from the Chicago Botanic Garden and University of Illinois Extension <https://bit.ly/2B6Umca> or <https://bit.ly/2ViGoKY>



Members are also encouraged to contact the University of Illinois Extension Master Gardener Resource Center at mastergardener@cookcfb.org with questions and for assistance with gardening and lawn questions.

Most fragrant bushes for zone 5 (southwest Chicago suburb):

Lavender will do well in full sun and prefers a well-drained, even dry soil.

Lavandula angustifolia 'Hidcote' grows 12 to 20 inches tall, has silver-gray foliage and boasts deep violet-blue flowers.

L. angustifolia 'Munstead' is an early blooming lavender, more compact at 12 to 15 inches, with true deep lavender flowers and an especially strong fragrance.

Our region's winters can pose a problem to the survival of some more tender lavender plants. Here is a link to the results of which lavender varieties survived in a trial at the Chicago Botanic Garden: <https://bit.ly/2VmzmVL>

For further reading on growing lavender in our area, here is excellent information from the Chicago Botanic Garden: https://www.chicagobotanic.org/plantinfo/lavender_varieties_midwest



For more information on where to get supplies, soil, and flowers checkout the Pull Out Section from our May Co-Operator. That list can be found on our website, www.cookcfb.org, as well as our Farm Products Locator page.

Master Gardener Resource Center is Ready to Serve Members

The Master Gardeners are available through the Farm Bureau office to answer questions from members and the general public related to gardening and horticulture. Questions can be directed to Mastergardener@cookcfb.org.

General topic areas that can be addressed include soil test recommendations, plant disease issues and treatments, horticulture related questions, pest identification and treatment, and more. Commercial related questions will be forwarded to the University of Illinois Extension professional staff.

The Master Gardener Resource Center is a partnership between the Cook County Farm Bureau® and the University of Illinois Extension designed to provide service to local members and the general public.

Soil Testing Kits Available

Cook County Farm Bureau® offers both members and non-members an opportunity to test their garden or lawn soil by purchasing a soil testing kit. Soil, in its natural state, is rarely fertile enough for the best growth of plants. Usually, it is necessary to supplement the earth's store of plant nutrients before we can obtain the most vigorous lawn, the most abundant and brilliant flowers, the most aesthetically satisfying trees/shrubs and the greatest yield of tasty and nutritious vegetables, or crops. Test your soil pH, potassium, phosphorous, and other key elements to begin the soil improvement process.

Complete kit guidelines and instructions, as well as mailing information included in the test kit. Members will receive test results and basic recommendations within two weeks. Members are also encouraged to contact the University of Illinois Extension Master Gardener Resource Center, available by emailing mastergardener@cookcfb.org with questions and for assistance with gardening and lawn questions.

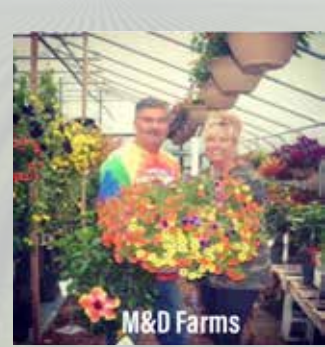
Farm Bureau Soil Test Kit discounted member pricing:

1 sample Soil Test Kit: \$22 | 2 sample kit: \$30 | 3 sample kit: \$45 | 1 sample Soil & Lead Test Kit: \$48 | 1 sample Lead Only Test Kit: \$40 Non-member pricing also available.

Soil Kits are available by calling the CCFB office at 708-354-3276 to pay by using a Visa, MasterCard, or Discover. Costs are subject to change.

Meet a "face" of the Cook County Farm Bureau

Mark Walsh and Donna Wright, M & D Farms & Garden Center



M & D Farms & Garden Center

mdfarms@att.net
14946 S. Bell Rd
Homer Glen, IL 60491
Phone: 708-935-1715

Website: <http://www.manddfarmandgardencenter.com/>
Facebook: <https://www.facebook.com/Hunter68/>

WHAT DO YOU "SPECIALIZE" IN?
Flowers

WHAT IS YOUR FAVORITE PLANT?
Donna-Mandevilla
Mark-Black Eyed Susan

WHAT IS YOUR MOST VALUABLE PIECE OF EQUIPMENT?
Caterpillar Forklift.

WHEN YOU ARE AT THE FARM OR GREENHOUSE, WHAT ARE YOU DOING?
In the spring we are busy planting all our Hanging Baskets, Patio Pots etc. in the greenhouses. Spring/Summer we are planting our veggie crop and Sunflowers in the field. We are both on hand everyday helping customers and answering questions.

WHAT IS YOUR FAVORITE FARM RELATED MEMORY?
One of our fond memories is when we purchased our first tractor. Donna's uncle was so excited and wanting to help us get it to our farm. We were just starting out and didn't have a big enough trailer, so he mapped out a way on the back roads for Mark to follow in the pickup. It took all day but when they got back, Donna's Uncle proudly parked the tractor up front for all to see! He helped us out so many times planting with "his" tractor.

IF YOU WEREN'T DOING THIS, WHAT WOULD YOU BE DOING?
Donna - I used to be a cosmetologist that's what I would be doing.
Mark - I was a roofer so maybe I would have my own business doing that.



Your South Holland Agency



Jeff Orman
Agency Manager
708-560-7777



Andrew Carrell
South Holland
708-596-3999



Jim Verduin
South Holland
708-596-0008



Randall Cox
Flossmoor
708-679-1870



Elliot Day
Flossmoor
708-679-1870



Gary Molenhouse
Manhattan
815-478-0190



Josh Van Namen
Worth
708-361-3925



Jim Pathemore
Orland Park
708-745-5151



Tim Perchinski
Steger
708-754-7300



Bob Smith
Homewood
708-798-4844



Paul Turay
Mokena
708-478-0423



John VanGennep
Mokena
708-478-5500



Bob Deenik
Lansing
708-474-5600



Tim Van Zuidam
St. John, IN
219-365-1781



Mike Cerf
Oak Forest
708-560-7777



Charmaine Toney-Adkins
Oak Forest
708-381-4010



John Tymn
Worth
708-480-5091



Chad Christie
Worth
708-560-7777



CENTENNIAL LEGACY PATIO TO BE CREATED TO BENEFIT FOUNDATION

BUILDING A COMMEMORATIVE LEGACY PATIO IN HONOR THE FIRST 100 YEARS OF CCFB SERVICE TO MEMBERS

Creating a legacy to mark the Centennial celebration of the Cook County Farm Bureau, the Farm Bureau and Foundation are partnering to create a Commemorative Patio on the grounds of the Cook County Farm Bureau. The Commemorative Patio will be close to the east entrance of the Farm Bureau building and will feature personalized memory pavers, two park benches, a wrought iron fence, and flower boxes.

Members and Farm Bureau/Foundation supporters and partners can support the project by purchasing a paver that will be incorporated into the patio. The paver can include the member or family name, encouragement, recognition, and other well wishes.

Three sizes of paver are available and proceeds from the sale of the pavers go directly to the Cook County Farm Bureau Foundation's efforts to improve and enhance agricultural literacy in Cook County. Donation for the pavers are fully deductible per IRS guidelines. Go to cookcfb.org/foundation for order form or to donate.

COOK COUNTY FARM BUREAU FOUNDATION BRICK ORDER FORM

4x8

Line 1 _____
Line 2 _____
Line 3 _____

8x8

Line 1 _____
Line 2 _____
Line 3 _____
Line 4 _____
Line 5 _____
Line 6 _____

8X16 / BENCH

Line 1 _____
Line 2 _____
Line 3 _____
Line 4 _____
Line 5 _____
Line 6 _____

Name: _____
Address: _____
City: _____
Zip Code: _____
Email Address: _____
Credit Card#: _____
Exp: _____ Security Code: _____

- _____ 4X8 BRICK - 3 LINES - 13 CHARACTERS PER LINE @ \$ 75.00 PER BRICK
- _____ 8X8 BRICK - 4 LINES - 13 CHARACTERS PER LINE @ \$150.00 PER BRICK
- _____ 8X16 BRICK - 4 LINES - 26 CHARACTERS PER LINE @ \$300.00 PER BRICK

PLEASE PRINT IN CAPITAL LETTERS AND CHECK FOR SPELLING ACCURACY.

PUNCTUATIONS AND SPACES COUNT AS CHARACTERS.

MAKE CHECKS PAYABLE TO CCFB FOUNDATION AND MAIL TO:
KATIE SMITH - DIR. OF MEMBERSHIP & ADMINISTRATION COOK COUNTY FARM BUREAU
6438 JOLIET RD., COUNTRYSIDE, IL 60525

Helping you protect what matters most

0819-503HO

Ag Lit Bit

“Escape with a Book”



Diane Merrion,
CCFB Director of
Ag Literacy

We’ve been given a gift this spring and summer, the gift of time. This summer promises to hold fewer summer classes, camps, pool outings, sporting events, and parties to name a few.

Some may have found we have more time for reading, while others continue to balance work with parenting, leaving less time. Whatever your situation, this summer may be the opportunity to explore a new book or reread a past favorite.

My to-do list includes more reading although I know I cannot begin to compete with many voracious readers I know. To give me a much needed boost, I’ve even decided to get back to a book club after a long absence.

My last club got disbanded by our book club president as her members wanted to talk more about life than the book we read that month. Hard to imagine, I know.

I know I should encourage you to focus on agriculture themes, however, any reading is just fine.

A book I recently discovered is a unique graphic novel titled *The Boy, the Mole, the Fox and the Horse*, by Charlie Mackesy. With few words and amazing drawings, it couldn’t be a more perfect book to share this month. One line that sticks with me is, “What do you want to be when you grow up?” The answer: “Kind.” I’m guessing that should make a few of you look further.

If you are looking for some young adult novels with an ag connection, check out IL AITC picks here <https://bit.ly/3d7Mbt3>, or those recommended on the American Farm Bureau Foundation website <https://www.agfoundation.org/projects/book-of-the-year-award>.

Local libraries are open again and ready to share their wealth of books. Take advantage of our less scheduled lives this summer and grab a book, magazine, or even this Co-Operator and relax only the words on the pages or pictures on the pages.

Thanks for reading about reading! Send your recommendations or reviews to Diane at aitc@cookcfb.org.



The first ever National Ag in the Classroom Virtual Conference was held June 24 and 25. We were proud to see the program kicked off with a presentation called the Scrambled States of Agriculture – (Grades 3-6) featuring Illinois AITC Education Director Kevin Daugherty. He provided the wealth of resources for teachers using the National Agriculture in the Classroom State Reports along with books, lessons, and videos to compliment the lessons.

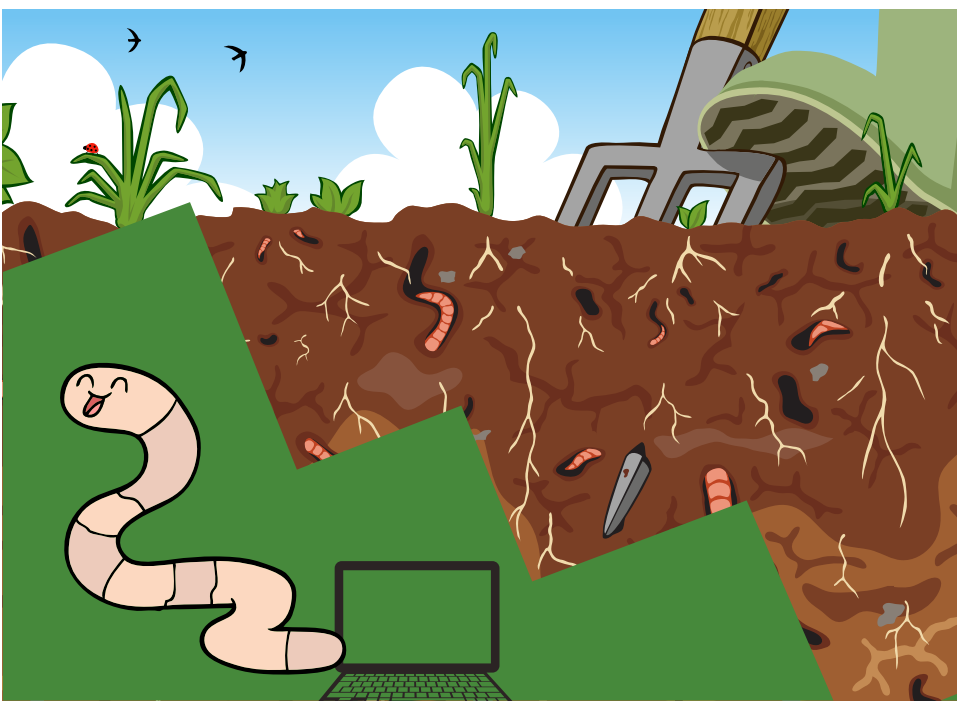
As Daugherty explained, it is a great way to take a unique look at every state! Presenter Leah Pratt partnered her lessons with a representative from Ford Motor Company to explore the topic

of **Driving STEM: The Super Soybean Car**. Making the connections between Henry Ford’s use of soybeans, this presentation shared ways to engage students in history, language arts, science, and beyond.

Integrating Agriculture through STEM featured Illinois AITC Teacher of the Year, Katie Buckley, who explained how she uses agriculture in just about every classroom topic including her weekly after school program.

For resources on the conference, reach out to Diane Merrion at aitc@cookcfb.org or visit the website <https://www.agclassroom.org/conferences/index.cfm>.

Library Fun!



Our friends at the Morton Grove Public Library requested a summer Zoom program combining gardening and ice cream which we were pleased to develop for their patrons. Entitled, “Wiggle your Way Around the Garden and Kitchen”, participants first learned about the importance of rich soil with our co-presenter from Mindful Waste, Ms. Renee, who taught the basics of creating compost, including the use of worms. AITC presenter, Ms. Diane, discussed

the importance of healthy soil to local farmers for use in growing crops and raising livestock. Recipes included making your own Dirt Pudding Cup and using milk to make your own ice cream. Thank you to the all who joined our virtual fun on June 23.

If your library, school or youth organization is interested in an agriculture presentation this fall contact Diane at aitc@cookcfb.org.

IL AITC Virtual Lessons and Family Field Trips Continue through July



Natalie Pratt provided teachers with a tour of her family farm explaining how they produce seed corn, corn, and soybeans on 8,500 acres. She also shared the names of her three cows that are her 4-H project. To view her tour and all of the past tours, visit <https://bit.ly/2B2oD8B>.

Twelve-year-old entrepreneur Natalie Pratt kicked off the Illinois AITC virtual field trip experiences by showcasing her eighth Generation Family Farm in Dixon, Illinois. Natalie and her brother grow popcorn on the farm through their own business called Bubba Bug Popcorn (<https://bubbabugpopcorn.com/>) which was featured during the first tour. Upcoming Thursday virtual trips for families and teachers include:

- July 2: Illinois Pork
- July 9: Visit the Staley Museum, Decatur Illinois: Soybean and the Chicago Bears!
- July 16: Illinois Corn
- July 23: TBD
- July 28: Visit the Roegge Farm in Central Illinois

Additionally, educators can sign up for one-hour teacher workshops that provide lessons, books, and activities for use in their curriculum. The July dates and topics are shown below.

- July 7: Plowing Through Our Past: A Look at the History of Ag in Illinois
- July 14: Don’t Be a Bad Apple: Tasty Apple-Themed Lessons That Pack a Crunch
- July 21: Give ‘Em Pumpkin to Talk About: Engaging Pumpkin-Themed Texts and Lessons
- July 30: The Cultures of Agriculture (a special 5-hour mini-conference)

Registration for ALL programs can be found at <https://iaitc.co/teacher> or by emailing cwyant@iffb.org.



We hope you enjoyed a glimpse behind the scenes at Wagner Farm last month

IN CASE YOU MISSED IT...



Visit <https://bit.ly/CCFBsummer> to watch the videos and learn more

Agriculture Adventures for Families

Many of us will taking road trips this summer so we wanted to offer you a grab and go car BINGO and discussion game to enjoy along the way. Can you find some signs of agriculture along those roads and if you do, what does it mean? As you spot some of the ag connections, check them off on your page and then read a fun fact explaining a bit about them. Send us a note if you find all of the items and let us know where you traveled. We'll share it in the fall Cooperator. Happy travels and enjoy getting to know a few new facts about the farm.



Cows

Beef cattle and Dairy Cows come in many colors such as brown, black, white and red.

Color isn't always an identifier. Beef cattle are like weightlifters. They are stocky because their energy goes toward building muscle and storing fat. Dairy cows are more like runners. They are thin and lean with a more angular shape. Some people think dairy cows look skinny because their energy goes into producing milk rather than building muscle and storing fat.



Ag Bingo



HORSE IN A PASTURE	TRACTOR	FIELD SIGN	PIGS	CHICKENS TURKEYS OR DUCKS
COWS	TRUCK MOVING LIVESTOCK	FLOWERS	SOYBEAN FIELD	VEGETABLE GARDEN
GROCERY STORE TRUCK	CORN FIELD	CCFB MEMBER (FREE SPACE)	GOATS OR LLAMAS	FARMER WORKING AT NIGHT
BARN QUILTS	SILO	PEOPLE FISHING	LAKE OR POND	HAY OR STRAW
SHEEP	FARMER	AD FOR HEALTHY FOOD	GRAIN BIN	FARMERS MARKET

Sheep



Like cows, sheep are ruminants, which means they have four compartments in their stomach. Sheep do not have any upper front teeth. When eating forages, such as grass and alfalfa, they close the lower teeth against the dental pad of the upper jaw.

Barn Quilt

Barn quilt squares have decorated barns for several hundred years in the United States. In the 1800s when paint became readily available and affordable, people began decorating their barns with certain quilt blocks to reflect particular meanings.

<https://www.ilfbpartners.com/family/mclean-county-barn-quilt-heritage-trail-adds-50th-quilt/>

Check out these links to learn more about Seed Signs, Silos, and Grain Bins.

Seed Signs: <https://mackinsondairy.com/what-do-field-signs-mean/>

Silos: <https://dekalbcountyonline.com/2016/07/what-is-that-grain-bins-and-silos/>

Grain Bins: <https://www.ilfbpartners.com/farm/the-difference-between-grain-bins-and-silos/>



July Word Search

K U V G K D X W H C T Y L T E
 C C Y T N L I M R R B I N G O
 O H U G X E J O A C Z R Q N V
 W L F R V I P V P E E H S I A
 S L A M T F E F F A S X K H X
 Z T R J X L O J L Y M K C S Z
 X Z M D E H N W X H S W O I R
 I G P E S A A C H I C K E N F D
 E A R S E O V J O V C C Y C J
 O O R B I N R O C F A X D X N
 H Q Y D N L I U M C H C G Y P
 V O J Z E Q O R G H D G R V G
 S U N H A N D S H U D J Q Z Z
 K B N D Z E S H U L C N Y T I
 Z P V Y O R L B Y R E R V B D

- | | |
|----------------|----------------|
| Bingo | Garden |
| Chicken | Horse |
| Corn | Road |
| Cows | Sheep |
| Crop | Silo |
| Farmer | Soybean |
| Field | Travel |
| Fishing | Truck |

Name: _____

Phone #: _____

Membership #: _____

(Membership # is located on front of paper)

If you were to win, check your preference:

Beggar's Pizza GC HRI GC Farm Funds
 (If a choice is not made, HRI GC will be sent)

Deadline is the 20th of each month.

Choose your prize:

Choices include a \$25 Beggar's Pizza Gift Card, a \$25 Home Run Inn Gift Card, OR \$25 in Farm Bureau Farm Fresh Funds.

Complete the Word Search puzzle for your chance to win! Winners will be contacted by mail.

Mail to: Cook Co. Farm Bureau

Ag Adventures Word Search

6438 Joliet Rd

Countryside, IL 60525

Fax to: 708-579-6056

Email to: FBcooperator@gmail.com

Complete and submit an entry every month all in 2020 and your name is automatically entered into an "End of Year" drawing for a gift basket full of ag themed goodies.

Good luck!

Last Month's Word Search Winner Is...

Steve Spellman



Roots Run Deep In The Garden



I literally followed Mom's footsteps into my gardening hobby. As a youngster, I walked behind my mom while she guided the tiller across the garden. When her heel lifted from the freshly tilled soil, I put mine down onto her footprint that formed in the soft black medium for vegetable seeds and transplants. I stretched to reach each footprint, careful not to step on her heel as she slowly guided the front-tine machine. We steadily paced back and forth across the garden with me right on her heels through the last pass.

Those early moments sowed my deep-rooted passion for growing fruits and vegetables for my family. Mom taught me how to plant, weed, identify insects, and harvest, as well as store, prepare, and preserve homegrown food. At night in front of the TV, we shelled pea pods that filled five-gallon buckets. We cured and stored onions, snapped and canned green beans, and ate meals entirely of our own fresh produce and freezer meat.

Gardening makes me feel good, which empowers me to fill our backyard with vegetable plots, fruit trees, berry beds, and

flowers like the farm women before me. I like feeding healthy produce to my family. I equally enjoy looking at the garden like a piece of artwork. I consider the soil a blank canvas, where my kids and I plant seeds to paint groupings of feathery carrot tops, scratchy squash vines, and sky-reaching sunflower blossoms.

Suddenly, more people seek this wholesome experience. Sales of flower and vegetable transplants doubled this year for the small-town greenhouse that I frequent. The coronavirus pandemic stimulated business from new customers who wanted to shop local and first-time gardeners with rekindled thoughts about self-sufficiency. I hope their sensitive plants survived the season's abnormally late-spring frosts, which challenged even experienced gardeners.

Our daughter recorded those nights of frost-protective coverings for her FFA and 4-H projects. Soon, her record book entries will include picking zucchini, arranging fresh-cut flowers, and canning pizza sauce made from homegrown tomatoes. Our son helps, too, but shows the most enthusiasm for the garden when digging potatoes and gathering apples with the 10-foot picker pole.

At a minimum, I hope gardening teaches our kids to appreciate the skill, responsibility, and dedication required to produce food. At most, maybe they will make more footsteps to follow.

About the author: Joanie Stiers' family grows corn, soybeans, and hay and raises beef cattle and backyard chickens in West-Central Illinois.

Chicagoland Area Farmers Markets are Open!

Whether you are looking for fruits, vegetables, meat, dairy, herbs, a pumpkin patch, or a pick-your-own farm, the Illinois Specialty Growers Association has a great resource to make local products easier to find. Visit <https://www.specialtygrowers.org/shoplocal> to explore opportunities to buy directly from local growers!

The Illinois Department of Agriculture has also created a running list of the registered farmers markets available. Visit www2.illinois.gov/sites/agr/consumers/FarmersMarkets to register your local market or find a market close to you!



Additional Locations, times, and attendance policies can be found at:

- Chicago: <https://www.domu.com/blog/farmers-market-chicago>
- Green City Market: <https://www.greencitymarket.org/>
- Suburban and French Markets: <https://mykidlist.com/farmers-markets/>

Partners Magazine Has Arrived In Member Mail Boxes



The summer edition of Illinois Farm Bureau Partners magazine went out in the mail in June and hopefully members have had a chance to enjoy the many articles, informational features, destination information, gardening tips, recipes, and so much more. We also hope that everyone had a chance to read the special feature article "Let Them Grow" on pages 8-11 that provided special attention to the Cook County Farm Bureau's Cookfresh® Grants that help urban gardens flourish in the Chicago area.

As a bonus, a Partners Podcast was made to expand upon the urban garden Cookfresh grant article... Check it out! Want to hear how the Cook County Farm Bureau® organization in our state's most-populated county helps urban farms and community gardens flourish? The episode



features Tucker Kelly, lead grower for Growing Solutions Farm on Chicago's west side, Gerry Kopping, who farms in Cook County, and Debbie Voltz, who helps manage member engagement, commodities, and marketing programs for the Cook County Farm Bureau. <https://bit.ly/CookfreshIL>

Shop Local, Garden Resources

GET ALL YOUR GARDENING NEEDS THROUGH OUR LOCAL MEMBER GREENHOUSES, FARM STANDS, AND LANDSCAPE CENTERS. CHECK OUT OUR 4-PAGE SPECIAL PULL OUT SECTION FROM OUR MAY COOPERATOR AND SUPPORT OUR AGRICULTURAL FRIENDS.

THIS SPECIAL INSERT CAN ALSO BE FOUND AT WWW.COOKCFB.ORG

WHERE ARE THEY NOW?



KAYLA SMITS Scholarship Recipient

Education/Degree: Calvin College (now University) in Grand Rapids, MI. Majored in Business with focuses on Small Business Management and Human Resources, minor in Accounting. Joliet Junior College - Agriculture and horticulture classes during summer months.

Current Role: Farmers' Market Manager at parents' farm in Chicago Heights, IL. Plans on attending and managing the seven markets they attend in the Chicagoland area. Assists in their greenhouse during the spring and summer months.

Why Agriculture: I grew up on a farm, so I have always had an interest in agriculture and horticulture from a young age. I really decided to go towards agriculture when I found that I loved being a vendor at Farmers' Market during my summer break. I had a passion for providing the Chicagoland area with fresh herbs and vegetables.

Cook County Farm Bureau® Partners with the Illinois Department of Agriculture for Clean Sweep Collection

Residents of 12 Illinois counties can dispose of unwanted agrichemicals for free this year through the Illinois Department of Agriculture's agricultural pesticide "Clean Sweep" program.

A "Clean Sweep" collection has been scheduled in late summer for Cook, Boone, DeKalb, DuPage, Grundy, Kane, Kankakee, Kendall, Lake, LaSalle, McHenry, and Will counties. The collection is open to farmers, retired farmers, nursery owners, private pesticide applicators, structural pest control applicators, and landowners who inherited unwanted agricultural pesticides with their property.

Participants must register the product they plan to dispose of by July 22. Registration is required to give the waste disposal contractor time to prepare for the different kinds of materials that will need to be handled.

Forms can be obtained either by calling the Illinois Department of Agriculture's Pesticide Hotline at 1-800-641-3934 or by calling the Farm Bureau office at 708-354-3276. Completed forms will be mailed or faxed to the Department of Agriculture. Participants will be sent a reservation card indicating the date, time, and location of their collection.

ComEd to Offer Farmers Assistance

Farmers who are ComEd customers can receive funds to assist with the cost of installing LED lights in their buildings, installing energy efficiency electrical equipment like electric motors, or installing or upgrading other electrical equipment.

The energy efficiency program is funded through a small amount that existing ComEd customers pay as part of their monthly energy bill.

Additional information is available at <https://bit.ly/37mTcVp>.

Manifolds, Manolos, and Manure



By Bona Heinsohn,
CCFB Director of Gov.
Affairs and Public
Relations

Eleven years ago, on one hot Father's Day, our blue-eyed girl quietly entered the world. Anyone who has met her will tell you that 11 years ago was literally the last time she did anything quietly.

In the last year, our blue-eyed girl has grown tremendously. As a young lady. As an agriculturalist. As a student. And as an equine enthusiast.

Earlier this year, our big little boy talked his dad into a pet rabbit. With his sister in tow they picked the tiniest, fluffiest, and friendliest bunny they could find. Together they check on, feed, water, and dote on "Corona Bunny." There was a time in the recent past that our blue-eyed girl would not have helped her younger brother and instead would have taken over Corona Bunny's care.

She's grown as an agriculturalist. Earlier this year she spent a week delivering calves. Fifty calves. In a week. She was up at dawn checking cows. And in the shower by the evening news washing off the new calf smell. Ironically, if school hadn't been remote, we may not have let her skip an entire week and she would've missed the chance to welcome 50 calves and 50 new moms. And we would have missed her growth.

This spring our blue-eyed girl's fascination with all things fuzzy

continued. She selected a gorgeous granddaughter of KHW Regiment Apple-Red-ET as her show calf. Red Carpet Jordy Applecrisp-Red-ET or "Apple Crisp" was chosen for her rambunctious and fearless personality rather than her pedigree. My blue-eyed girl named her "Apple Crisp" after her grandma and for her dad and great grandpa who love apple crisp. I wanted her to start showing with a decent looking calf so as she got older and could afford better pedigreed animals she would appreciate them more but I lost that battle to my youngest brother-in-law and my blue-eyed girl who claimed the prettiest red and white calf born in March on the farm. Of course, she had to be one of "Apple's" granddaughters. The same "Apple" who commanded a \$1 million price tag when she sold in 2008.

She's grown as a student. Despite her mom stepping in as her teacher for her final five weeks of fifth grade, she's an excellent student. Under Señor Carbajal, her Spanish and confidence has blossomed. With Mrs. Rosales, she's reading The Hunger Games series, Maximum Ride series, Tales of a New World series, and the Percy Jackson series. There was a time that I could read ahead of her and that time is no more. Her biggest complaint about this year was that she didn't get an A+ in STEM, just an A. Somehow, she got an A+ in physical education despite not being able to ride a bike.

She's changed as an equine enthusiast.



Eighteen months ago, I brought a big red beast also known as an American Quarter Horse. He's a defunct hunter/jumper who gets hot and bothered at the sight of ground poles. Through a combination of training, patience, and a willingness to dump money into barrel races knowing perfectly well that he wasn't going to place he's finally coming around. Last year, my blue-eyed girl ran in three races. Not perfect patterns. Not necessarily fast. But clean, safe, and without incident. This year, they've ran in one race. Not perfect. Not clean. But she handled him turning too soon. She completed the pattern. And finished. She finished and went back to training to try again.

Farm kids are resilient. They're tough.

As parents we want nothing more than our blue-eyed girl to want to milk the cows. Drive the tractors. Farm. Just like her dad, grandfather, and great grandfather before her.

Bona can be reached at Bona@cookcfb.org

General Assembly Approves Unbalanced Budget

In May, the General Assembly passed a series of bills putting the fiscal year 2021 budget before the Governor. The budget is a mirror of the current state budget. With the uncertainty of the state revenue stream it appears the immediate goal of the legislature was to get a spending plan in place to allow state government to operate and then they can follow up later in the fiscal year with supplemental appropriations. The supplemental appropriations would likely be addressed during the fall veto session, and by this time the legislature will have a more accurate account of the State's tax and fees receipts and as well as additional federal funds that may be made available. The overall budget also includes provisions to expend federal funds made available by the federal CARES Act and other sources.

The General Assembly also gave expanded authority to the Governor to deal with the budget shortfalls. Some of the additional authority is listed below:

- Reduces the funds derived for the state income tax that are set aside for municipalities and counties, called the Local Government Distributive Fund, by 5%.

The budget also contains the pass through of federal funds devoted to addressing economic issues associated with the COVID-19 outbreak including, but not limited to

- \$316 million for small businesses statewide, of which \$159 million is dedicated to counties outside of Cook, DuPage, Kane, Lake, and Will counties.
- \$1.5 billion for the State's operations and continued response related to COVID-19.
- \$250 million for local governments' operations and continued response related to COVID-19.

- \$260 million statewide for assistance to childcare facilities impacted by COVID-19, of which \$70 million is dedicated to counties outside of Cook, DuPage, Kane, Lake, and Will counties.

Agricultural Related Budget Items

The Illinois Department of Agriculture's budget is similar to the previous year's budget. However, this year, the General Assembly added funding to be used for COVID-19 related challenges for livestock farms.

The FY21 budget includes \$5 million from the CARES Act directly for livestock producers to recoup economic losses from COVID-19. The funds were allocated to the Department of Commerce and Economic Opportunity. Producers will be able to apply for funds for costs that are eligible for reimbursement pursuant to CARES Act, such as losses due to market interruptions, including depopulation. Although, the budget authorizes the use of these funds, the administration will have to implement rules and procedures for producers to apply

and secure reimbursement. More details and guidance will be forthcoming in the coming weeks.

Over the past several days Farm Bureau has worked with the Illinois Pork Producers Association, Illinois Beef Association, Illinois Milk

Producers Association, Illinois Corn Growers Association, and Illinois Soybean Association to secure dedicated funding from the federal CARES Act in the state budget to address the financial crisis livestock producers are facing.

Line Item	FY 2019 Actual Expenditure	FY 2020 Enacted Appropriation	FY 2021 Enacted Appropriation
Cover Crop	-	\$300,000	\$300,000
Cook County Extension	\$2,449,200	\$2,449,200	\$2,449,200
State Cooperative Extension Service Trust Fund	\$10,944,700	\$10,994,700	\$10,994,700
Ag Extension – 4-H	\$786,400	\$786,400	\$786,400
SWCD Cost Share	\$4,500,000	\$3,000,000	\$3,000,000
SWCD District Operations	\$3,000,000	\$4,500,000	\$4,500,000
Co. Fair and Exposition Authorities	\$900,000	\$900,000	\$900,000
Co. Fair Rehabilitation	\$1,301,000	\$1,301,000	\$1,301,000
Co. Fair & Agriculture Societies	\$1,798,600	\$1,798,600	\$1,798,600
Viticulture/Enologist	\$150,000	\$150,000	\$150,000
Administration of the Pesticide Act	\$5,993.7	\$7,150,900	\$7,400,000
Pesticide Control Act	\$626,300	\$650,900	\$670,000
Animal Disease Labs Act	\$13,600	40,000	\$40,000
Livestock Management Facilities Act Administration	\$50,000	\$50,000	\$50,000
Agricultural Education	\$4,946,000	\$5,000,000	\$5,000,000
Food Safety Modernization Initiative	\$14,400	\$200,000	\$200,000

SUPER SUMMER SAVINGS



Save 20% at Home Run Inn! Members can purchase discounted gift cards directly from us. \$25 gift cards sell for \$20 and \$10 gift cards sell for \$8. Call the Farm Bureau office at 708-354-3276 to purchase yours today!

Members can receive 10% of all orders at participating culvers locations. Simply show your membership card to receive your discount. Participating locations include: McHenry, Mt. Prospect, Rosemont, Arlington Heights, Schaumburg-Wise Rd., Crestwood, Lansing, Buffalo Grove, Frankfort, Homewood, Matteson, Orland Park & Tinley Park.



If you are looking for family fun in Wisconsin Dells, Passport to Savings is your ticket to tons of discount tickets. From 15% off when you purchase tickets to two different attractions, to a whopping 35% off with a purchase to six or more different attractions, Passport to Savings amps up the Wisconsin Dells deals and packages as you amp up the fun! To order tickets and for promo code visit www.cookcfb.org.

Members purchase discounted Delta Sonic Car Wash tickets from CCFB buy calling 708-354-3276. Tickets include: Super Kiss Car Wash, Deluxe Car Wash, and Super Interior Cleaning for larger and smaller vehicles. Visit www.cookcfb.org for pricing and features.



- UPDATE -

Checkout our website at www.cookcfb.org for opening dates, discounts, and ticket info.



FARMFRESH FUNDS



Want a \$20 Farm Fresh Funds voucher redeemable to one of our area greenhouses, garden centers, farm stands or other farm businesses?

Encourage your family, friends, and neighbors to join the Cook County Farm Bureau as an associate, farmer, or professional member. If they join, you will receive \$20 in fresh funds! Call our office at 708-354-3276 to let us know that you referred a member.



Individuals can join the Cook County Farm Bureau by going to www.cookcfb.org and clicking on MEMBER CENTER.



We offer wet hosing, bulk tank fills and package lubricants – D.E.F, Oil, Hydraulic, Diesel and Gas for all your needs.

**We are a 24/7 Fuel Supplier servicing Illinois – Wisconsin – Indiana
Call us today at 847-994-3010 or visit us online at www.luckysenergy.com
Growing To Serve You Better**

Cook County Financial Representatives of the Month

The Financial Representative of the Month program is designed by Country Financial Agency Managers of Cook County to recognize overall Insurance Leaders in Life, Disability, Auto, Home, and Health production during the month. The agent earns the award through efforts to provide quality service to existing and new clients. Listed below are the various agents honored by their agency manager with the Financial Representative of the Month designation.



***Kevin Welsh**

Chicago North Agency, Victoria Nygren, Agency Manager

*Kevin Welsh has been named Career Financial Representative of the month for May 2020. His office is located at 220 S. Cook St., Ste. 102 in Barrington, IL. His phone number is 773-248-2561. Kevin has been a Financial Representative since January 2009.



***Robert Barron**

Chicago North Agency, Victoria Nygren, Agency Manager

Robert Barron has been named Employee Financial Representative of the month for May 2020. His office is located at 4725 N. Western Ave., Ste. 280 in Chicago, IL. His phone number is 414-630-7515. Robert has been a Financial Representative since October 2016.



***Nader Mikhaeil**

Chicago Northeast Agency, Sharon Stemke, Agency Manager

Nader Mikhaeil has been named Career Financial Representative of the month for May 2020. His office is located at 4200 W. Euclid Ave., Ste. E, in Rolling Meadows, IL. His phone number is 847-963-8874. Nader has been a Career Financial Representative since March 2006.



Michael Mikhaeil

Chicago Northeast Agency, Sharon Stemke, Agency Manager

Michael Mikhaeil has been named Employee Financial Representative of the month for May 2020. His office is located at 5750 Old Orchard Rd., Ste. 550, in Skokie IL. His phone number is 847-773-0762. Michael has been a Financial Representative since September 2019.



Zachary Youngblood

Chicago Northwest Agency, Jack Smith, Agency Manager

Zachary Youngblood has been named Career Financial Representative of the month for May 2020. His office is located at 10A W. Schaumburg Rd., Schaumburg IL. His phone number is 847-519-3595. Zach has been a Financial Representative since February 2002.



Matthew Below

Chicago Northwest Agency, Jack Smith, Agency Manager

Matthew Below has been named Employee Financial Representative of the month for May 2020. His office is located at 1515 E. Woodfield Rd. Ste. 930 in Schaumburg, IL. His phone number is 847-891-3151. Matthew has been a Financial Representative since September 2019.



***Jim Andresen**

Orland Park Agency, Cary Tate, Agency Manager

Jim Andresen has been named Career Financial Representative of the Month for May 2020. His office is located at 17605 S. Oak Park Ave., Ste C&D in Tinley Park, IL. His phone number is 708-633-6490. Jim has been a Financial Representative since January 2003.



Kurt Husein

Orland Park Agency, Cary Tate, Agency Manager

Kurt Husein has been named Employee Financial Representative of the Month for May 2020. His office is located at 12130 S. Harlem Ave. Unit A in Palos Heights, IL. His phone is 708-480-5099. Kurt has been a Financial Representative since December 2017.



***Mike Cerf**

South Holland Agency, Jeff Orman, Agency Manager

Mike Cerf has been named Career Financial Representative of the Month for May 2020. His office is located at 4845 167th St. Unit 101 in Oak Forest, IL. His phone number is 708-560-9077. Mike has been a Financial Representative since April 2002.



John Tymn

South Holland Agency, Jeff Orman, Agency Manager

John Tymn has been named Employee Financial Representative of the Month for May 2020. His office is located at 10607 S. Harlem Ave., Unit 1A in Worth, IL. His phone number is 708-480-5091. John has been a Financial Representative since June 2019.

**Indicates that this Financial Representative is a CCFB Financial Certified Representative. The Cook County Farm Bureau Certified Financial Representative Program is designed to strengthen the partnership and relationship shared by Financial Representatives from Country Financial with the Cook County Farm Bureau organization.*

Hello Ciao Guten Tag Hola Bonjour Tere Olá Shalom Translate to other Languages

We are very fortunate to have members that come from various backgrounds and countries. While we publish this publication in English, the Google Translate App can convert the publication text through your smart phone screen into Spanish, French, Polish, Russian, Chinese, Arabic and a host of other languages. Check it out. Enjoy and happy reading!

Cześć Aloha Zdravo Salam Dobry den Hei God Dag Alo

Classifieds

All ads that we receive for The Co-Operator are also listed on our website at cookcfb.org/membership/classifieds. If you have a photo of the item(s) that you are selling you can email it to us to include it on our 'Classifieds' page on our website only along with your ad.

Email your ad (and photo if you have one) to fbcooperator@gmail.com. Please be sure to include your full name, Farm Bureau number, and phone number. Deadline for Classified ads is the 17th of each month. Any ads submitted after the 17th will appear in the following month's Co-Operator. Members may run up to four non-commercial classified ads annually for free. Any ads submitted after the fourth, will be charged.

If mailing your ad, please mail to: Cook County Farm Bureau, Attention: Classified Ads, 6438 Joliet Rd, Countryside, IL 60525. You can also fax your ad to 708-579-6056.

For Sale

Quantum rehab 600 series electric wheelchair, top of the line, new batteries, new wheels, new controller, true balance, power tilt, recline lift, power chair elevating legs, has attendant control module which overrides user- all books \$1200 or best offer. Call 708-654-2010.

Sharp countertop microwave 1.8 cu.ft. \$40, Hoover carpet upholstery cleaner \$25, IBI matic comb binding system and 2 boxes plastic binding combs \$40, Fax machine with digital answering service \$20, Noritake picadelly china dinnerware set (48pc.) \$40. Call Francis at 708-614-8541.

Vintage Sears 12ft. aluminum fishing boat. Includes oars, 2 anchors and Stearns life vest. Good, solid condition. \$325.00 Call Ron at 773-229-9123.

Courvoisier Erte collection Limited Edition un-open, brand new power tools, high end guns. Call Jim at 773-581-4400.

Spring cleaning sale- 2 lawn mowers oneself driven, 2 snowblowers one electric, 2 white gas (camping gas) camp stoves one three burner, 2 garden tractor carts, 2 bicycles 26-inch, 1 clam shell auto luggage carrier. \$25/\$100 or best offer. Call Paul at 708-826-0000.

Property for sale- Apartment building 3-unit, separate utilities, all got rehab, new granite kitchen, 2 plus bedroom, plus office, Chicago Northwest side (North Lincoln Square), private parking, excellent condition, new roof, full basement. Excellent condo conversion. Income approx. 50,000 yr. 2720 Summerdale asking price 539,000. Call Louie at 847- 361-9292.

A.R. E Fiberglass Tonneau cover, grey, will fit a 2007 to 2013 GMC Sierra crew cab \$600 or best offer. Torro personal pace lawn mower \$250 obo. Torro lawn mower \$150 obo. Frigidaire wine cooler stainless Steel \$250. HJC snow helmet black never worn with cover \$ 125 obo. Aluminum ATV ramps heavy duty ten ft. long fold in half to five ft. long \$200 obo. Call Mark at 219-617-0363.

Bunch-o-balloons 100 water balloons in 60 seconds \$4 a package. Call Joe at 708-539-2927.

Vehicle

2013 Nissan Altima 4.5s like new condition, extended Nissan, newer tires, brakes, just tuned, very clean one owner, mostly highway miles. \$5900. Call Louie at 847-361-9292.

2002 Classic Jaguar XKR 100 Limited Edition Supercharged convertible every available option, with 16k on it. For details call Jim at 773-581-4400.

Wanted

1972 older cars, truck/parts unfinished projects. Call Attilio at 708-439-9770.

Ducklings, chickens (pullets), coops, brooders, feed, supplies. Near New Lenox, willing to meet. Call Stephanie at 708-674-2029.

FREE CLASSIFIED ADS

For Cook County Farm Bureau members All Cook County Farm Bureau members may run four non-commercial classified ads annually free in the Cooperator. Only items of personal property will be accepted. Ads must be in the office by the 17th of each month.


Category:
 For Sale Misc
 For Rent Wanted

To place an ad call the CCFB office at (708) 354-3276 or mail details to Cook County Farm Bureau, 6438 Joliet Road, Countryside, IL 60525.

You can also fax your ad to (708) 579-6056 or email to juanita@cookcfb.org
 Non-member ad rate: \$.75 per word; \$15.00 minimum.




The US currently consumes about 42 billion pounds of chicken, 26 billion pounds of beef, and 25 billion pounds of pork each year according to the Center for Food Integrity. The above infographic provides a pictorial explanation of the complex food supply chain for the three common meat proteins. We have posted a sizeable listing of the frequently asked questions related to recent food supply chain disruptions at www.cookcfb.org as well as info about the Journey to your Plate.



GIFTS & FLOWERS




HEALTH & WELLNESS



AUTOMOTIVE



CONCERT TICKETS



RESTAURANTS



MOVIE TICKETS


THERE'S REALLY SOMETHING FOR EVERYONE

With membership so affordable, it's hard to believe there's something for everyone. Over 302,000 discounts available to you. Search our platform to find savings that fit your needs.

- Attractions & Tours
- Automotive
- Cellular Phones
- Concerts & Events
- Electronics
- Everyday Living
- Fashion & Beauty
- Gifts & Flowers
- Health & Wellness
- IL Farm Bureau Exclusives
- Movie Tickets
- Restaurants
- Travel
- Unique Experiences

ONE STOP SAVINGS

- Log-in to our new membership benefit platform using your county Farm Bureau® membership number at <https://ilfb.abenity.com>
- Search offers using business names, locations, categories, and more
- Change your location to see deals near you
- Show and save mobile coupons
- Provide instant, in-store discounts at nearby restaurants and retailers
- Share on your social networks and let others know about your savings, so they can start saving too



Green County Farm Bureau®
 Jane Doe L.
 Member 123-9876A
 Exp. Date 09/30/2018

ILLINOIS AGRICULTURAL ILFB.ORG

This Month in Cook County Ag

JULY 2020

Farm Bureau Member Farm Stands are open and bursting with color and flavor – red ripe tomatoes, green delicious zucchini, and yellow juicy sweet corn! Purchase all your local, farm-grown produce at a member farm stand. To locate a member business near you, visit our Farm Products Locator at <http://cookcfb.org/discover-local/farm-products-locator>.

University of Illinois Four Seasons Gardening Summer Webinars & Extension Webinar
Living Carpets – Ground Covering
 July 14th at 1:30 PM
 Register at <https://web.extension.illinois.edu/registration/?RegistrationID=22248>

Palos Park Library Pollinator Garden
Pollinator Garden VIRTUAL Tour
 Thursday, July 30 at 7:00 – 7:30PM
 Register at: <http://palosparklibrary.evanced.info/msignup/Details>

Join library director, master naturalist intern, and Palos Park Garden Guild I member Kathryn Sofianos for a virtual tour of the library's pollinator garden. During the tour keep your eyes peeled for Monarch butterflies and caterpillars, bees, and dragonflies. The garden is certified and registered by Monarch Watch as an official Monarch Waystation and is the recipient of a 2020 Cook County Farm Bureau Community Garden Grant.

Update Message

The Cook County Farm Bureau would like to say thank you to all that have been so supportive of agriculture, healthcare providers, our area food banks, and fellow members during recent months. We know that it is been difficult time for so many people including many of you. The Cook County Farm Bureau office has been proceeding with a "soft" reopen as we balance recommendations and guidelines protocols of the phase 3 and phase 4 orders from Gov. Pritzker. That means we have some staff physically in the office and we are following the proper protocols with staff, tenants, and guests.

Should any member need any service, have questions, or seek information from Cook County Farm Bureau, please call 708-354-3276 or email ccfb@cookcfb.org.

Many of our programs and activities transitioned in recent months to online delivery and interaction and we will continue to provide quality in whatever form and format is required moving forward. As we move forward, we will continue to evaluate the best approach

to delivering (in person or through electronic means) programming, information, activities, and events.

We have had serious discussions about what schools may look like this fall and the impact on the Ag in the Classroom program. We are proceeding with a multi-dimensional approach that features the necessary flexibility (in person and electronic virtual) when it comes to classroom presentations, interaction with teachers and students, and expanded connections with classrooms beyond 4th grade levels.

We also know that many of our affiliated COUNTRY Financial Agency financial reps are open for business, meeting with clients, and serving members.

We look forward to continuing to provide the services, programs, benefits, and activities that members have become accustomed to throughout our 100 years of existence as an organization.

Best wishes!

Bob Rohrer, Manager

Defensive Driving Course

Receive discounts on your auto insurance

August 18 & 19, 2020

10AM-3PM (both dates)

Location: CCFB

\$15 for members and \$25 for nonmembers

(includes course materials and lunch both days).



The course explores the causes of vehicle collisions (mental, physical and environmental factors) and teaches how defensive driving principles can prevent most of these costly incidents. Upon completion, you may be eligible for a discount on your auto insurance. Rated drivers 55 and over who have not had a motor vehicle accident or violation within the past 12 months are eligible. The savings will extend for 3 years on the policy.

Reservations are required and class size is limited. Call the CCFB at (708) 354-3276 to make your reservation or for more information. Program subject to change based on state order conditions in August.

The Cook County Farm Bureau® is hosting its 4th annual

FARM CRAWL – Virtually during the month of August...here is what you need to know to get ready:

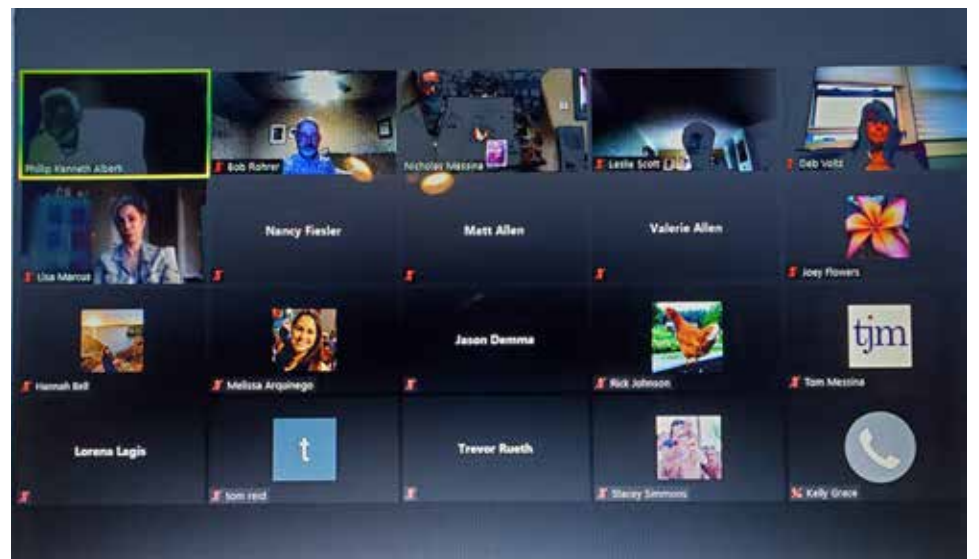


- Participating member farms, greenhouses, farmstands and Ag businesses will be highlighted on our Farm Crawl page located on our Buy Local page of CCFB (cookcfb.org) website during the entire month of August 2020.
- Each farm crawl location will contain a video/visual of their business offering insight, tours, and information about who they are, where they are, and what they do. Each location video or image links will contain a hidden word!
- Passport virtual visit(s) to farm crawl locations verified by identifying the hidden word that each location will have.
- We encourage Crawlers to visit and shop crawl locations in person when convenient and in the coming months (not all operating in August).
- To sweeten the deal...all Virtual Crawlers who submit a Passport by deadline date (tbd), will be entered into a drawing for Farm Bucks- same as cash for use at crawl locations.

The Virtual Farm Crawl is self-guided with no set schedules allowing members and the public flexibility to choose the farms and agri-businesses to visit during the month of August.

Full program details, as well as participating farms and business information will be available in the coming issues as well as on the Cook County Farm Bureau Events Calendar at www.cookcfb.org/Events. The Farm Crawl is an event all ages can enjoy. We hope to see you on the virtual farm in August! For passport, questions and details, email: membreshipdebbie@cookcfb.org.

Hemp 1 Year Later Webinar



The Commodities/Marketing Team's "Hemp - 1 year later" webinar had very little resemblance to the informational meeting held a year ago at the Cook County Farm Bureau building when industrial hemp production was legalized in the state and farmers were curious about its potential. However, despite the need to shift to a video conferencing platform, the webinar held May 21 still drew a nice size group. Participants were provided information about hemp production and the valuable lessons learned from last year's production efforts.

SUPPORT LOCAL!

MEMBER TO MEMBER - BUY LOCAL

HELP US TO PROMOTE YOUR SMALL BUSINESS

Cook County Farm Bureau is here for you!

We want to support our small businesses by encouraging members to shop local.

Promotion will include social media and inclusion in the Co-Operator and on our website.

Promote your business to our 40,000 plus CCFB members!!

Check out the list of local businesses already a part of this special program at www.cookcfb.org

If you choose to participate in this program, please email juanita@cookcfb.org.

