



Co-Operator

official publication of the Cook County Farm Bureau®



Scan for more farm bureau info. & events

A "staple" in the Farm Bureau member's home since 1938

Mission: To serve all members of the Cook County Farm Bureau® with meaningful and beneficial programs that reflect our Agricultural Heritage.

Vol. 91 No. 10

Countryside, IL 60525

www.cookcfb.org

October 2017

LocalFarmProducts.org



With the fall season upon us, be sure to visit our website dedicated for the entire Chicagoland area to help you find local farm product marketers who specialize in fall plants, hay straw for Halloween, pumpkins and more! Localfarmproducts.org offers everything "farm" from fresh food to hay to green industry producers.

Do you need pumpkins, gourds, popcorn, flowers, soil, bedding plants, hay straw, or fresh vegetables? To locate an area farm producer to fill your need, visit Localfarmproducts.org today!

LocalFarmProducts.org is a website dedicated for the entire Chicagoland area to help consumers find local farm product marketers. The site features information about area farmers markets; a variety of recipes using fresh, local products; how-to-guidance when it comes to canning and food preservations; Cook area agricultural statistics; meet local farmer videoettes, and local foodie news.

As the premier organization serving farmers of Cook County, we hope that farmers and consumers alike find this meaningful programming linking local consumers in a way that helps to fulfill our goal for financial strength amongst our producers.



This John Deere # 52 two bottom plow was placed at the Cook County Farm Bureau as a connective symbol between today's agriculture and farming of past generations. The plow was manufactured in 1935-45 timeframe and required a tractor to pull it.



Upcoming Events

Beekeeping Related Workshops

Page 1

Stroke Detection Screenings

Page 10

Shred Day

Page 12

Beekeeping related Classes continue at the Farm Bureau...

Marketing Honey and other Products of the Hive Workshop

With beekeeping comes honey, wax, and other products of the hive. Learn what marketing avenues there are for these products, and how to go about finding them and preparing for them. Marge Trocki, Beekeeper and Naturalist with the Downers Grove Park District Apiary, will lead the discussion and Q & A! There will be plenty of time to ask questions.

Discussion Objectives:

- Products of the Hive = Yield and Pricing
- Avenues to Sell Products
- Insurance, Licensing, Laws
- Advertising and Marketing
- Display and Packaging Considerations



When & Where: **Wednesday, October 25, 2017 | Cook County Farm Bureau**

Time: **6:30 PM – 8:00 PM**

Cost: **\$15 for Cook County FB or CDBA members | \$20 non members**

Beeswax & Beeswax Candle-making Workshop

The possibilities are endless when it comes to beeswax candles! Find out how to refine beeswax from the hive and how to prepare it for candle making. Try your hand at designing candles from this clean, non-toxic product. Leave with your own hand-rolled candle, and supplies to make your own votive candle at home.

Workshop Objectives:

Beeswax: uses, harvesting, and rendering from hive

Candles: dips, molds, votive, rolled candles

When & Where: **Thursday, November 16, 2017 | Cook County Farm Bureau**

Time: **6:30 – 8:30 PM**

Cost: **\$20 for Cook County FB or CDBA members | \$25 non members**

Workshop registration, payment, and information: Contact Debbie at 708-354-3276

Members may register online at the Member Center: cookcfb.org/membership/manage-account

Class size is limited as is minimum enrollment.

The instructor reserves the right to cancel and/or reschedule.

Bring a smile to teens in need this Christmas!



CCFB Young Leaders is teaming with Toy Box Connection!

Donations accepted until December 6th.

Make a teenager's holiday wish come true! The Cook County Farm Bureau Young Leader Group is hosting a holiday toy drive where we collect unwrapped, new/gently used toys for youth between the ages of 12-19.

Drop off locations:

- COUNTRY Financial Southside:**
- 9731 W. 165th St. Ste. 36 Orland Park, IL 60467
 - 4845 W. 167th St. Unit 101 Oak Forest, IL 60452
 - 6239 S. Archer Ave. Chicago, IL 60638

- COUNTRY Financial Northside:**
- 2435 W. Schaumburg Rd. Schaumburg, IL 60194
 - 25 NW Point Suite 850 Elk Grove Village, IL
 - 4725 N. Western Ave. Ste. 280 Chicago, IL 60625

Special request: Sports equipment such as basketballs, baseball mitts, soccer balls, etc.

Cook County Farm Bureau: □ 6438 Joliet Rd. Countryside, IL 60525

Question of the Month

Where is Fairway Farms (in Cook County) located?

Call the Farm Bureau at 708-354-3276, fax your answer to 708-579-6056, or email your answer to membershiplinda@cookcfb.org (Please include Name, FB# and phone number) for your chance to enter a drawing for a \$25 gas card.

September's winner is **Susan Peters**.

Last Month's Question: What is the key ingredient that is locally grown for this month's 'Recipe of the Month'?

Answer: Tomatoes

THE POWER OF (A)

AWARDS

Cook County Farm Bureau Winner of the Power of 'A' 2012 Summit Award

Let's Talk About the Ag on Your Plate There's still corn in the field, can I eat it?

Answered by Mark Yunker, local farmer (pictured)



There's a very good chance that you will likely consume the corn still standing in the field, but not as a raw product. Instead, dent corn is used for livestock feed, fuel, beverages, sanitizers, or as ingredients in food. Dent corn has a blander flavor than sweet corn because it has a very high starch content.

Sweet corn is what most people think of when they think

of corn. Sweet corn is picked when it's younger and has a higher sugar content, making it sweeter. Sweet corn is also considered a vegetable rather than a grain, like dent corn.

Have a question? Submit it to bona@cookcfb.org. We'll share questions with our farmers and publish their answers as space allows in upcoming issues of The Co-Operator.

Coghill Has More Than Golf on the Course!



Pictured above is the greenhouse (top left), thriving peppers (top right), Angelica Carmen under a vine cage (lower left), and the apiary (lower right).

We recently had a chance to stop in at Coghill Golf Club in Lemont to visit Fairway Farm (found on the Coghill property) started and managed by Angelica Carmen, Sustainability Specialist, in 2017. Angelica provided a tour of their growing beds for vegetables, the greenhouse which she built to start plants, and the apiary where the bees are flourishing. The vegetables and products that come from the farm are used in the Coghill restaurant for their patrons and members to enjoy. In its first year, over 500 pounds of vegetables have been harvested and used in the restaurant so far and the harvest continues to grow.

Dear Members,

Agriculture and Cook County Farm Bureau has changed a lot since the organization was created by a group of leading farmers back in 1920.

As we consider the long, storied history of the Cook County Farm Bureau, we have begun seeking memorabilia and artifacts that can help tell the story.

We are asking members to check your attics, closets, bookshelves, and basement storage areas for items that can help us chronicle agricultural and Farm Bureau history in Cook County. We also welcome any affiliated company history such as Lake-Cook Farm Service Supply, Country Companies, etc.

Items may include — photographs, member signs, clothing, newspapers, lapel pins, old "give-away" promotional items, documents, and other keep-sakes.

If there is a story behind the item, please share it with us as well. We will be pleased to credit you and your family. Items can be provided on loan or donated.

We hope to be able to partially recreate the evolution of Agriculture and Farm Bureau through the power of memory items!

Please contact the Cook County Farm Bureau at 708-354-3276 or email us at ccfb@cookcfb.org.

Thank you for your help!

Bob Rohrer, CAE, FBCM, Editor

P.S. For more information, please access www.cookcfb.org and checkout the "Who We Are" video and the Country Financial Connection history.

The "Co-Operator," the monthly publication of the Cook County Farm Bureau, is available to members through mail delivery, e-mail, or by viewing at www.cookcfb.org. Members that wish to receive the publication solely by email can let us know by sending an email to membershplinda@cookcfb.org with the subject: E-Co-Operator.

Translate The Co-Operator into other Languages

We are very fortunate to have members that come from various backgrounds and countries. While we publish this publication in English, the Google Translate App can convert this text through your smart phone screen into Spanish, French, Polish, Russian, Chinese, Arabic and a host of other languages. Enjoy and happy reading!

Gracias THANK YOU Gratiſied The Gratitude Box

Each month we would like to give thanks to those who have helped us in some way.

This month, we would like to thank:

- Caroll and Ron Tucker, along with Dan & Shelli Merrion, for gathering soil samples from Utah for our Ag in the Classroom teacher educational workshop. At the workshop, we practiced soil painting while learning about the unique characteristics/coloring of state soils.
- Gerry Kopping for hauling and placing the John Deere two bottom plow on the Farm Bureau grounds.
- Carl Smits for signing up a new farmer member into the Cook County Farm Bureau®.
- Our Ag in the Classroom Presenters for their excitement in gearing up for a great year of teaching kids about agriculture and farming.
- Roger Freeman for discussing the 2017 Giant Pumpkin contest and harvest activities on WGN radio.
- Dan Biernacki, Jim Bloomstrand, Ruth Zeldenrust, Gerry Kopping and Karen Biernacki for signing up enough voting members during the year to be eligible to be inducted into the Master Member Club of the Cook County Farm Bureau.
- To our many members who sent letters to Pres. Trump urging for the United States to maintain the South Korean Free Trade Agreement which provides great market access for farm commodities.

Gratitude
Appreciative
Thanks

Recognition
Appreciative
Gratitude

Gratiſied THANK YOU Gracias

Co-Operator

published monthly
Cook County Farm Bureau
6438 Joliet Road, Countryside, IL 60525
(ph) 708-354-3276 (fax) 708-579-6056
(e-mail) ccfb@cookcfb.org (website) www.cookcfb.org

USPS No 132180 Periodical Postage Paid at LaGrange, IL 60525 & additional mailing office

Editor	Copy Analyst	Copy Development
Bob Rohrer	Ashley Christensen	CCFB Office Staff

Officers & Directors

James Gutzmer, President		
Michael Rauch, Vice President		
Janet McCabe, Secretary-Treasurer		
Dan Biernacki	James Bloomstrand	Elizabeth Christian
Roger Freeman	Patrick Horcher	Gerald Kopping
Tim Stuenkel	Mark Yunker	Ruth Zeldenrust

Farm Bureau Manager

Bob Rohrer

Office Staff

Melanie Paffumi	Bona Heinsohn	Katie Smith
Linda Tobias	Bob Heine	Debbie Voltz
Diane Merrion	Kelli McSherry	Jill Drover

Affiliated Companies

Jeff Orman	Insurance Agency Manager, South Holland
Victoria Nygren.....	Insurance Agency Manager, Chicago North
Marc Rogala	Insurance Agency Manager, Chicago South
Jack Smith	Insurance Agency Manager, Chicago Northwest
Joe Youngman	Insurance Agency Manager, Chicago Northeast
Cary Tate	Insurance Agency Manager, Orland Park

Postmaster - Mail Form 3579 to 6438 Joliet Road, Countryside, IL 60525 "Co-Operator" (USPS No 132180) is published monthly as a membership publication for \$2.50 per year to members as a part of their annual membership dues by Cook County Farm Bureau, 6438 Joliet Road, Countryside, IL 60525. Periodical postage paid at LaGrange, IL and additional mailing office. Postmaster: send address changes to the Co-Operator, 6438 Joliet Road, Countryside, IL 60525.



Downwind

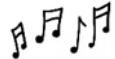
by Bob Rohrer, CCFB Manager

Home, Home on the Range



*Oh, give me a home where the buffalo roam
Where the deer and the antelope play
Where seldom is heard,
a discouraging word
And the skies are not cloudy all day*

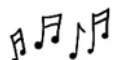
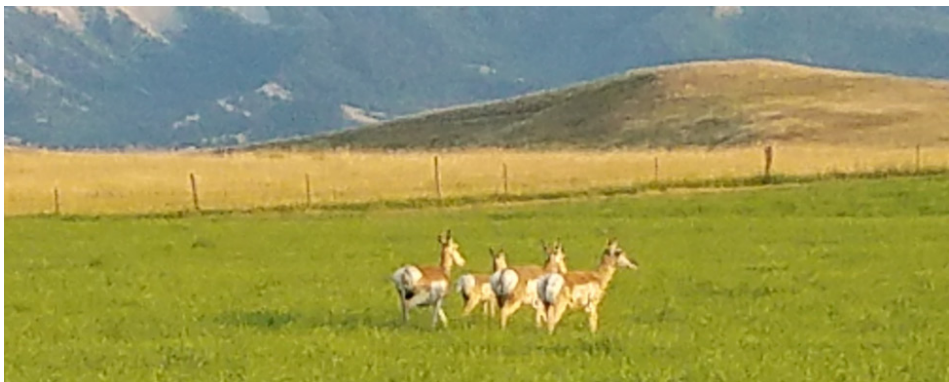
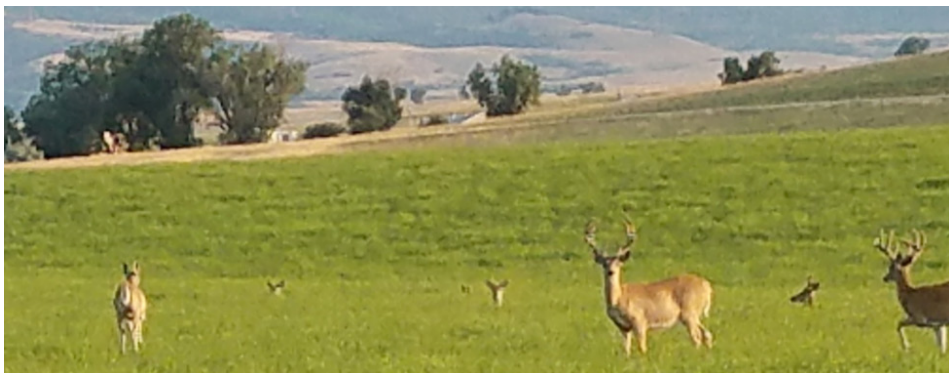
Home, home on the range...



A few months ago, I was out in the Big Horn Mountains fishing with some buddies. I marveled, as we traversed through and around the low-lying ranches of the country, about how much wildlife is fed high quality, irrigated alfalfa and hay grasses grown by the ranchers. **Of course**, those crops in the form of hay are intended to go to the gullets of cows and sheep during the cold winter months.

The lush valleys of hay crops, nestled between mountains, attract hundreds of deer and antelope, especially in the evening hours, to gorge on the finest product the rancher has to offer. I often wonder if the ranchers get upset with these natural grass thieves.

I snapped these photos of deer and antelope "playing" in the hay fields in August as we drove through one of these valleys, next to the Big Horn Mountains.



The classic tune popped into my head... *Home, home on the range...*

The National Bison Association recently announced a goal to more than double the number of buffalo in North America to one million by 2027. (There were fewer than 700 of the wooly beasts back in 1880) I wonder how much of the rancher's hay crop a buffalo herd can eat. It is clear the group will need to partner with farmers and ranchers to be successful.

Discounted Movie Tickets



We have purchased extra movie tickets for the upcoming holiday season! As a Cook County Farm Bureau member, you can purchase discounted movie tickets for the following theatres: AMC, Marcus & Regal. They make great gifts!

Ticket Prices:
AMC: \$9.50, Regal: \$9.00
Marcus Platinum: \$7.00
Marcus Silver: \$8.00

Farmers (and ranchers) don't get a lot of credit for maintaining wildlife on their property. However, in Illinois, there are 30.7 million acres classified as agricultural land. That is roughly 75% of all the land of the state. This provides great habitat for all sorts of wildlife in the State.

In addition, Illinois has 4.4 million acres of forested land with 97% of forests classified as hardwoods and 3% classified as conifers. Many of these forests can be found on property owned by farmers. This, in itself, is enough to cause agriculture to be the number one habitat provider for wildlife in the state (and this is pretty typical in every state).

The farmers that I know love having wildlife on their property (although they express "less" love when that same wildlife wants to eat all of the farm crops!). I know farmers that choose to leave a few rows of field corn or other crops unharvested for the wildlife to feed on in the winter.

The song "Home on the Range" reminded me of John Denver singing the song in a TV special with the Muppets back in the '70's. Television channels and show options were limited in rural Illinois. Usually, we could receive three television stations signals (sometimes four depending on cloud cover, storms, wind and which kid was holding the antenna). Very popular on that old black-and-white TV were the classics, including Gunsmoke, Little House on the Prairie, Happy Days, Leave it to Beaver, Andy Griffith, Gilligan's Island and the Muppets.

I am not (too) ashamed to admit that I loved the Muppets. Am I a Muppet kind of man or a manly Muppet? John Denver...What an incredible voice...what an incredible talent. Lousy at building planes.

Most people know I do not have a John Denver voice. Actually, I have a singing voice more ideally designed for a Muppet...it could clear those hay fields of those thieving deer and antelope (and buffalo)! Farmers and Ranchers everywhere: You're welcome!

Bob Rohrer can be reached at brohrer@cookcfb.org or 708-354-3276.

AUTO | HOME | LIFE | BUSINESS | RETIREMENT



Your South Holland Agency



Jeff Orman
Agency Manager
708-560-7777



Andrew Carrell
South Holland
708-596-3999



Jim Verduin
South Holland
708-596-0008



Randall Cox
Matteson
708-679-1870



Elliot Day
Matteson
708-679-1870



Gary Molenhouse
Matteson
708-679-1870



Jason Riha
Worth
708-361-4330



Pat Hickey
Worth
708-361-4081



Tim Winters
Worth
708-480-5094



Josh Van Namen
Worth
708-361-3925



Jim Pathemore
Orland Park
708-745-5151



Tim Perchinski
Steger
708-754-7300



Bob Smith
Homewood
708-798-4844



Paul Turay
Mokena
708-478-0423



John VanGennep
Mokena
708-478-5500



Bob Deenik
Lansing
708-474-5600



Tim Van Zuidam
St. John, IN
219-365-1781



Mike Cerf
Oak Forest
708-560-7777



Mike McKenny
Oak Forest
708-560-7777



Wendy Boston-Robinson
Oak Forest
708-560-7777



Monica Moore
Oak Forest
708-560-7777



Corey White
Oak Forest
708-560-7777

Auto, home and business insurance policies issued by COUNTRY Mutual Insurance Company®, COUNTRY Preferred Insurance Company® and COUNTRY Casualty Insurance Company®. Life insurance policies issued by COUNTRY Life Insurance Company® and COUNTRY Investors Life Assurance Company®. Fixed annuities issued by COUNTRY Investors Life Assurance Company®. All issuing companies located in Bloomington, IL.

Helping you protect what matters most

“Where Am I?”

If you can guess where in Cook County Calvin was when this photo was taken, you will be entered to win a \$25 gas gift card! To enter, call us at 708-354-3276 with your answer OR email your answer (please include name & member number) to membershirlinda@cookcfb.org using the subject “Where Am I?” A name will be drawn at random.



In last month’s “Where Am I?”, Calvin was at Lincoln Park Zoo in Chicago, IL.

Congratulations to John Stromski for being last month’s winner!

Hold the Date

Farming for our Future Gala... Sowing the Seeds of Greatness
A fundraiser to benefit Agricultural Literacy through the CCFB Foundation

The Cook County Farm Bureau® Board of Directors and Foundation Board planning team are in the process of creating the second annual Gala to benefit agricultural literacy in Cook County. The Gala is scheduled for March 10, 2018 and will be held at the spectacular facilities at Ruffled Feathers Country Club in the easily accessible Lemont area. The funds raised will go to support the farm and food literacy efforts of the organization through Ag in the Classroom, college scholarships for member dependents, and our conversations with our urban friends about farm and food production.

Last year’s event was such a fun fundraising success and we look forward to building on it with even more entertainment. The exclusive event will feature an open bar with appetizers, filet mignon dinner, great music and dancing, the potential of walking away with big-bucks through door prizes, a silent and live auction, and games throughout the evening. Additional details will be available through The Co-Operator.

We encourage our members to be a part of this effort to plant seeds of agricultural literacy in our area cities and communities.



Can You Name This Antique Farm Tool?

Do you know what the name of this tool is or what it’s used for? Each month we will post a photo of an antique farm tool until the end of the year. There will be a total of seven antique tools (one being featured each month in the Co-Operator until December). Try to name each tool each month, and once we post the final tool, you can submit to us your list with the name of all of the tools. If you name all seven tools correctly, you will be entered into a drawing for a \$50 gas card.

(If you miss a month, you can always go to cookcfb.org to view past issues of the Co-Operator).

Meet a “Face” of the Cook County Farm Bureau®

Each month we highlight a volunteer, staff member, or ag partner of the Cook County Farm Bureau. **This month’s “Face of CCFB” is ...**

Amy Hansmann



- Is a stay-at-home mom of two, but volunteers on multiple committees including the Cook County Farm Bureau’s Public Policy and Public Relations committees
- Loves to travel and is fascinated by unfamiliar cultures and their foods, habits and traditions.
- Lived in Tijuana, Mexico twice and had no running water or electricity
- Also loves to garden and just moved to a new home with a huge yard and can’t wait to get started on it!

WHAT IS YOUR FAVORITE FARM MEMORY?

I’m a city girl, but I went to University of Iowa - it was fun to watch everyone in the fields during harvest. The coolest thing ever was watching neighbors line up with their machines to help a friend out.

WHAT IS YOUR FAVORITE FOOD?

Bacon or really any form of pig.

WHAT IS YOUR BEST FOOD MEMORY?

I make it a mission to keep having new “best” food memories! But probably when I was young and running in the house to find we were having one of my two childhood favorites Quiche (with bacon) or my mom’s meatloaf that has ham and mozzarella wrapped inside.

WHAT IS YOUR FAVORITE WAY TO CONTROL CALORIES?

If it isn’t worth it, don’t eat it. I don’t focus too much on calories but I do not eat a lot of processed food and that cuts out a lot of useless calories right there.

WHAT IS YOUR FAVORITE TRACTOR?

Green. Because Deere ships them on the rail line through the city and it is fun to watch hundreds go past at one time.

Signup Begins for 2017-19 CCFB Action Teams/ Volunteer Opportunities

The CCFB has 5 teams made up of excited members with an interest in a strong farming presence in Cook County and a quality Farm Bureau Organization. We are always seeking individuals with a passion for farming and Farm Bureau who wish to give time, energy and enthusiasm locally.

Teams

	Primary Purpose	Primary Audience
Commodities/Marketing Team	To help Farmer Members succeed financially in Cook County.	Farmers (Current and Prospective)
Public Policy Team	The need to engage and influence elected local, state and national officials.	All Members (A & M)
Member Relations Team	To recruit and retain Members through an increase in membership benefits/ services.	All Members (A & M)
Public Relations Team	To improve the image of farmers through public outreach activities.	Primary purchasers of household food, products/general public
Ag Literacy Team	To teach primary and middle school students and teachers about farmers and	Primary school (K-5 th) students/teachers

Membership recruitment and retention is an aspect of each Team.

Cook County Farm Bureau®

Each Team meets a minimum of 4 times annually (see scheduled times and dates on right) to develop plans and activities to fulfill its purpose. We have opportunities for volunteers who wish to serve “as needed” and in our legislative contact group, FBACT.

If interested, please go to: cookcfb.org/ccfb/volunteer-opportunities. What a great way to make great connections and serve agriculture!

Upcoming Meeting Dates/Times*:

- Weds, Dec. 13th • Dinner 5:30 pm, Meeting 6-7:45 pm
- Weds, Feb. 14th • Dinner 5:30 pm, Meeting 6-7:45 pm
- Weds, Apr. 11th • Dinner 5:30 pm, Meeting 6-7:45 pm
- Weds, Aug. 8th • Dinner 5:30 pm, Meeting 6-7:45 pm

*The Public Relations Team meets from 4:30-5:30 pm prior to dinner.

Meetings are held at the Cook County Farm Bureau located at 6438 Joliet Rd. in Countryside. We are also working on Skype options for attendance.

“From the Country”

Parents: Take Precautions to Keep Your Trick-or-Treaters Safe



Jeff Orman, Oak Forest/
South Holland Country
Financial Agency Manager

For many children, Halloween is a time to dress up in a favorite costume, go to classroom parties and trick-or-treat at neighbors' houses. These happy thoughts of jack-o-lanterns, costumes and candy may cause parents and kids alike to forget the potential dangers of Halloween. I have assembled the following Halloween safety topics for adults in order to keep this autumn holiday safe and fun.

Costume

- Whether you buy or make your child's costume, make sure the

material is flame retardant.

- If the costume is not already a bright color, add reflective tape so motorists and other trick-or-treaters can better see your child.
- Consider using face paint instead of a mask, so your child's vision will not be restricted.
- Make sure the costume is not too long so that your child doesn't trip and fall.
- If your child is carrying a prop, such as a plastic sword, make sure the tips are smooth and flexible to prevent injury.

Route

- Older children: Plan older children's routes ahead of time, so you know where they will be. Also, set a time for them to return home.

If possible, send a cell phone with them to use in case of emergency.

- Younger children: Never let small children trick-or-treat alone. While walking your pre-planned route, remind them to stay on sidewalks and cross at corners or crosswalks.
- Only go to houses where the lights are on.
- Make sure either you or your child carries a flashlight if trick-or-treating after daylight hours.

Candy

- Provide your children with a healthy meal before they go trick-or-treating. This way, they won't be hungry and will be less tempted to sample their candy en-route.
- Do not allow children to eat

collected candy while they are trick-or-treating. Always check candy before they eat it, and dispose of any candy with an open wrapper or other suspicious appearances.

In addition to the above suggestions, I encourage you to teach your children basic safety knowledge. Common sense tells adults to look both ways before crossing the street, but eager kids on Halloween night may forget this basic safety rule. Also, it is good to remind children that although Halloween is a fun, exciting holiday, they still need to remember their manners and always say "thank you" when accepting candy.

Jeff Orman can be reached at jeffrey.orman@countryfinancial.com or 708-560-7777.

Have a question for a Master Gardener?

The master gardeners are in the Farm Bureau office this Fall season to answer questions from members and the general public related to gardening and horticulture.

The master gardeners are accessible by contacting the Cook County Farm Bureau at (708)354-3276 on Mondays and Thursdays from 9:00 am to 1:00 pm. You can also contact them by email at: mastergardener@cookcfb.org. Walk-ins are also welcome during Master Gardener office hours at the Cook

County Farm Bureau suite located at 6438 Joliet Rd. in Countryside. This service is expected to continue through November 9th.

General topic areas that can be addressed include soil test recommendations, plant disease issues and treatments, horticulture related questions, pest identification and treatment, and more. Commercial related questions will be forwarded to the University of Illinois Extension Professional Staff.

Your Orland Park Agency



Cary Tate
708-226-1111
Agency Manager
Orland Park, IL



Piero Setta
708-226-0431
7601 W. 191st St
Tinley Park, IL



Jim Andresen
708-633-6490
17605 S Oak Park Ave
Tinley Park, IL



Thomas Geraghty
708-425-9700
5003 W 95th St
Oak Lawn, IL



Mark Wright
708-403-2416
7601 W. 191st St
Tinley Park, IL



George Parthemore
708-226-1896
9432 W 143rd St
Orland Park, IL



Dean Reszel
708-478-3136
11056 W 179th St
Orland Park, IL



Mike Skrabis
708-226-1666
9731 W 165th St
Orland Park, IL



Tony Palumbo
708-403-5708
7601 W. 191st St
Tinley Park, IL



Mike Spadoni
708-425-1825
3923 W. 95th St
Evergreen Park, IL



Bob Johnson
708-429-9422
17605 S Oak Park Ave
Tinley Park, IL



Dan Stumpf
708-614-1688
17605 S Oak Park Ave
Tinley Park, IL



Bill Thompson
708-361-1304
12130 S Harlem Ave
Palos Heights, IL



Nora Beverly
708-429-7789
17605 S Oak Park Ave
Tinley Park, IL



Brian Zielinski
630-257-6100
106 Stephen St
Lemont, IL



Nick Burke
708-425-1816
3923 W. 95th st
Evergreen Park, IL



Mike Thauer
708-425-1559
3923 W. 95th st
Evergreen Park, IL



Erica Storrs-Gray
708-671-1465
12130 S Harlem Ave
Palos Heights, IL



Terry LaMastus
708-754-5900
3308 Chicago Rd
Steger, IL



Joe Voves
708-425-1527
3923 W. 95th st
Evergreen Park, IL



AUTO | HOME | LIFE | BUSINESS | RETIREMENT

Auto, Home, and Commercial policies issued by COUNTRY Mutual Insurance Company®, COUNTRY Casualty Insurance Company®, or COUNTRY Preferred Insurance Company®. Life insurance policies issued by COUNTRY Life Insurance Company® and COUNTRY Investors Life Assurance Company®. Fixed Annuities issued by COUNTRY Investors Life Assurance Company®. All issuing companies are located in Bloomington, IL.

9731 W 165th St Suite 36 Orland Park, IL 60467
708-226-1111

0417-510HO

LAST CHANCE!



You can still buy your Six Flags Great America tickets to Fright Fest from the CCFB.

We will be selling tickets in our office until October 10th (Ticket will be good through end of Fright Fest).

Ticket price is \$47 (already includes tax and fee).

Recipe of the Month: Zucchini Brownies

- 1 ½ c sugar
- 2 c zucchini, shredded
- 1 stick butter
- 2 eggs
- ½ t salt
- ½ t vanilla
- 2 T cocoa
- ½ t cinnamon

- Topping:**
- 1 c chocolate chips
 - ½ c chopped nuts
 - 2 T sugar

Mix ingredients and pour into 9"x13" greased pan.
Mix topping ingredients and sprinkle on top of mixture.
Bake in 350° oven for 30-35 minutes.

Recipe reprinted with permission from Phyllis Henning in Lansing.



Agricultural Literacy & Public Relations

Ag Lit Bit By Diane Merrion



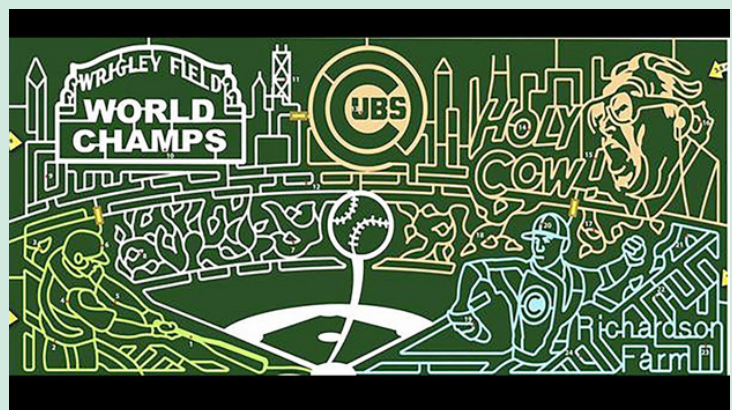
aMAZE-ing Ag!

Corn and Cubs are not the most likely topics to combine, but this combination is proving to be a huge hit at a corn maze in Illinois. Ever since I read the articles about local corn mazes, I just couldn't stop myself from investigating if this could possibly involve another career in ag. The answer is a resounding YES! In fact, corn mazes have become such a popular supplemental income option for farmers that there are now businesses that exist solely to help farmers build and run mazes. A few I ran across include Corn Mazes, Maze Play, Precision Mazes and The MAiZE. There are a few basic steps to creating the end product which include the use of technology. One example of the process is described as follows.

GPS tracking is used to create a path for the corn maze to be cut. It starts by creating a grid plot, either on graph paper or digitally. Then a vehicle is fitted with a GPS tracking device which is driven around the land where the maze will be and GPS coordinates are obtained. The electronic version of the maze design is overlaid over the map of the field, where a program

plots the maze and lets a mower go through the GPS-guided path for cutting the maze at the right locations. Many farmers lay down seed twice as thick as they normally would, to create a much denser field. When the corn stalks reach a foot tall, the tractor will cut through the field according to what the GPS tracking system came up with for the maze. With constantly changing technology options, now, a GPS-equipped mower can zoom in on a single stalk within an inch. Add in a drone and you can even get more elaborate. Drones can be used to take overhead shots following the planting to see if the design is coming to fruition or if adjustments need to be made. After the season wrap up, the maze gets harvested by a combine, which separates the ears of corn from the stalks.

Whether you own a business to create and execute the development of corn mazes or you are an artistic type who creates the cornfield design, agriculture has another option for careers. I hope you and your family have the opportunity to visit a field and try your luck on navigating out of the field of corn. A tip I read is to not get stuck in the eye or you'll go around and around and around. Enjoy!



Richardson Adventure Farm in Spring Grove celebrates the Cubs World Series win with their corn maze this year.

2017-2018 Urban Youth Agriculture Entrepreneurship Grant

*A project of the Cook County Farm Bureau Foundation®
in partnership with Compeer Financial*

Our Urban Agriculture Grant was developed to provide urban students with knowledge about starting an agriculture business. The grant is available to high school teachers for use with students on a project that relates to the topic of urban agriculture. Teachers can receive up to \$500 (to purchase supplies and/or start up materials) to initiate or build upon an ag-based

product line or entrepreneurship operation at their school. To qualify, the school must be in Cook County and have agriculture-related coursework such as Food Science, Horticulture, Aquaponics, Environmental Science, Animal Science, or Ag Finance. Visit <http://www.cookcfb.org/ag-literacy/teachers-resources/grants> for more information.



Educators Should Join the Farm Bureau!

We are excited to see the growing number of teachers joining the Cook County Farm

Bureau® to have access to the wide variety of classes and materials that membership provides. Members are able to access discounts on travel/tourism, informational articles in Partners Magazines and a whole host of events and activities such as gardening workshops, soil

testing, beekeeping classes and more which are easily transferable to their school curriculum.

During the month of October, all Farm Bureau members who refer a teacher for membership will receive a movie ticket for themselves and an ag-related book for the teacher's classroom. Call or email our membership department and let us know you are a teacher and who referred you to us. Email: ccfb@cookcfb.org

Apple Crunch Day 2017


The Illinois Great Apple Crunch celebrates fresh, local apples from the Midwest on October 12th. Schools across the state of Illinois can participate by serving local apples on the lunch tray and 'crunch'-ing into them together as a school. Educational supplements for use in the cafeteria and the classroom are available that will teach your students all about Illinois apples through the Ag Literacy Coordinator.

Apple Crunch is a part of the Great Lakes Great Apple Crunch, which is in its third year. Students across the Great Lakes region participate in this fun celebration of local food. The regional Crunch is a project of the Great Lakes region of the National Farm to School Network, and is coordinated in Illinois by a variety of local partners, including Illinois Ag in the Classroom. For more information or to register, visit <http://illinoisgreatapplecrunch.com/>

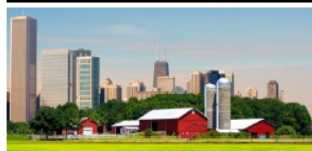


Cook County Farm Bureau Farm® FREE Classroom Presentations

Call: 708-354-3276 or Email: aitc2@cookcfb.org to schedule

Part One	Part Two	Part Three	 Be one of the 300+ schools that host our program each year!
4th Grade	4th Grade	6-8th Grade Science	
This program introduces students to the production, processing, distribution and manufacturing of agriculture in Illinois. Features hands-on activities for all students!	This lesson explores agriculture, nutrition and the USDA MyPlate. Students grind wheat and examine the farm to table process. Features reading labels, food journaling & more! *Part One pre-requisite	Students will learn about the research and development of agriculture related products and the careers related to this growing industry. Includes lab experiment and interactive lesson! *Limited Availability	

All programs tied to Common Core and NGSS and are based on availability.



Teacher Comments: "Students loved the activities and hands on components", "The program and presenter were great!", "The students gained so much knowledge from the presentation", "I like how you have updated the program from previous years", "We enjoyed using the pre-post assessment in Kahoot -It", "Excellent presenter and a great program".

Ag in the Classroom is Now Registering Schools for Ag Day Ag Day South

For 3rd Grade- 2 hour free field trip learning about agriculture
Chicago High School for Ag Sciences, Chicago
March 22, 2018
Openings: 2 classes; 11:30-1:30 session

Ag Day North

For 3rd Grade - 2 hour free field trip learning about agriculture
Historic Wagner Farm, Glenview
April 26, 2018
Openings: 12 classes; a.m. and p.m. sessions

For more information contact the Ag Literacy Coordinator at aitc@cookcfb.org.

AGRICULTURE ADVENTURES FOR FAMILIES



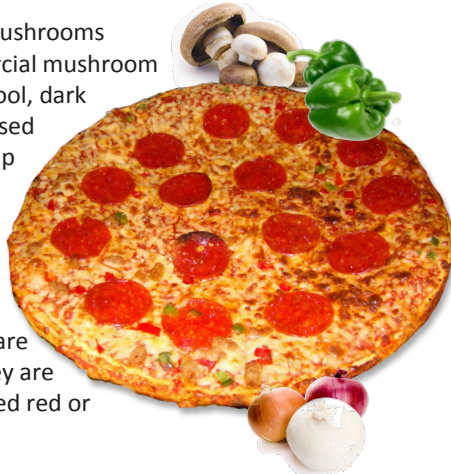
In the month of October, farmers markets are exploding with fruits, vegetables and stacks and stacks of pumpkins in honor of the fall season and Halloween! In addition to indulging in sweet treats this month, there's one other thing that Americans seem to be enjoying. Did you know that Halloween is one of the top five pizza sale days of the year? October also happens to be National Pizza Month. Eating pizza is the perfect opportunity to use the bounty available through Illinois farmers.

What do you like on your pizza?

Mushrooms? There are close to 2,500 types of mushrooms throughout the world. There are about 275 commercial mushroom growers in the United States. Mushrooms grow in cool, dark places. They lack chlorophyll, the green substance used by plants to make food, so they survive by soaking up nutrients from organic matter in the soil.

Peppers? There are many varieties of garden peppers, but the large-fruited sweet pepper is the favorite of most Americans and a popular pizza topping. Peppers grow on small bushy plants. They are usually eaten in their immature green stage, but they are also delicious after they have fully ripened and turned red or yellow.

Onions? There are about 1,100 onion farms in the United States. Seventy of them can be found in Illinois, on 400 acres of ground. Onion bulbs are raised either from seed or "sets." Onion bulbs grow underground and have long green tops. After they are picked and cleaned, they are either sold at grocery stores or sent to processing plants. At processing plants they are diced or processed to be put into foods such as spaghetti, barbecue sauce, and pizza. Each of us eats about 19 pounds of onions a year.



Source: Illinois Ag in the Classroom.org

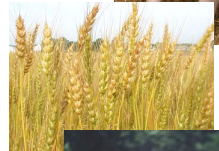
Pizza in just 30 minutes?

Next time you order a pizza, think about how long it really took to make! It's a lot longer than you think to turn the following into ingredients for your pizza...

Pigs (from birth to processing): **6 months**
Iowa is the #1 state in pork production.



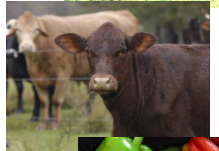
Wheat (from planting to harvest): **8-10 months**
Kansas is the #1 state in wheat production.



Dairy Cows (from birth to milk production): **2-3 years**
Wisconsin is the #1 state in cheese production.



Beef Cattle (from birth to processing): **14-16 months**
Texas is the #1 state in beef production.



Vegetables (from planting to processing): **3-6 months** (depending on vegetable type) California is the #1 state in tomato production and Pennsylvania is the #1 state in mushroom production.



After production and processing, pizza toppings must be transported to pizza parlors, store and restaurants. Without truck, rail, barge and air transportation, these goods would not make it onto your pizza. So how long does it really take to make a pizza?

Source: Illinois Ag in the Classroom.org

APPLE OR PUMPKIN?

This month, people will flock to apple orchards and pumpkin patches. Below is a list of different types of apples and pumpkins. Can you guess which is which?

- Golden Delicious
- Baby Bear
- Cinderella
- Jonagold
- Old Zebs



Answers: Golden Delicious & Jonagold - Apples, Baby Bear, Cinderella & Old Zebs - Pumpkin



Pizza Fun Facts



- The average pizzeria uses roughly 55 pizza boxes per day.
- 36 percent of all pizza orders contain pepperoni as a topping.
- 94 percent of Americans eat pizza regularly.
- The top 5 pizza sales days of the year are Super Bowl Sunday, New Year's Eve, Halloween, The night before Thanksgiving, & New Year's Day.
- Americans eat approximately 100 acres of pizza a day or about 350 slices per second.
- The average American eats about 46 pizza slices a year.
- Pizza comes from the latin root word *Picea* which means the blackening of crust by fire.
- Women are twice as likely as men to order vegetables on their pizza.
- Saturday night is the most popular night to eat pizza.
- The world's fastest pizza maker can make 14 pizzas in 2 minutes and 35 seconds.
- The longest pizza delivery was from Cape Town, South Africa to Sydney, Australia.

Source: Pizza.com

October Word Search

H	X	N	E	R	W	D	T	A	F	F	K	S	Q	Z
O	A	B	I	H	B	H	W	L	J	G	P	X	C	U
Z	Z	L	E	K	R	F	M	G	A	Y	O	L	Q	Y
D	C	A	L	R	P	Z	S	L	O	B	V	O	H	L
F	T	Y	S	O	Q	M	L	Q	X	D	T	M	C	V
Z	Z	C	N	I	W	E	U	D	S	X	O	C	V	S
W	L	I	Q	B	R	E	J	P	J	H	V	Q	E	I
Q	S	W	B	E	L	O	E	G	Y	B	A	E	T	L
U	G	W	D	N	N	E	N	N	P	D	Q	P	J	F
Q	A	N	O	A	I	R	E	Z	Z	I	P	S	V	V
W	I	O	G	C	S	Z	H	B	I	X	H	G	C	H
C	V	O	D	E	W	K	I	I	O	P	T	I	M	N
C	L	X	C	T	M	B	V	U	J	E	Q	P	P	M
D	N	I	T	U	M	B	V	V	U	P	B	S	I	U
P	L	A	P	P	L	E	Y	A	E	P	N	A	E	Y
S	W	J	Z	I	Z	Y	V	S	T	E	Z	U	S	Y
V	A	K	B	W	Z	I	P	K	E	R	P	C	E	N
V	P	J	I	K	I	Z	C	L	H	O	D	E	E	S
F	E	E	B	X	B	N	A	N	T	N	C	S	H	C
V	E	G	E	T	A	B	L	E	S	I	W	J	C	F

- Apple
- Beef
- Cheese
- Cinderella
- Cows
- Halloween
- Jonagold
- Pepperoni

- Pigs
- Pizza
- Pizzeria
- Pumpkin
- Sauce
- Slices
- Vegetables
- Wheat

Name: _____

Phone #: _____

Membership #: _____
(Membership # is located on front of paper)

If you were to win, check your preference:

___ Beggar's Pizza GC ___ HRI GC ___ 3 Movie Tix
(If a choice is not made, movie tickets will be sent)

Deadline is the 20th of each month.

Choose your prize: Choices include a \$25 Beggar's Pizza Gift Card, a \$25 Home Run Inn Gift Card, OR *3 AMC Movie Tickets
*AMC Yellow tickets not valid in California, New York & New Jersey.

Complete the Word Search puzzle for your chance to win! Winners will be contacted by mail.

Mail to: Cook Co. Farm Bureau
Ag Adventures Word Search
6438 Joliet Rd
Countryside, IL 60525
Fax to: (708)579-6056

Email to: membershipplinda@cookcfb.org

Complete and submit an entry every month all in 2017 and your name is automatically entered into an "End of Year" drawing for a gift basket full of ag themed goodies. Good luck!



Mark Turecek

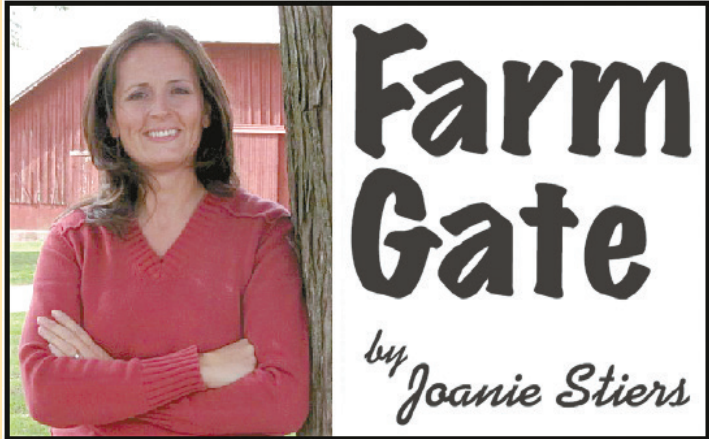
Congratulations for being last month's word search winner!

Attention Voting Members

The Cook County Farm Bureau Board of Directors will be conducting a business only Annual Meeting on November 8, 2017 for the Voting Members of the Cook County Farm

Bureau. Voting members may attend the Annual Meeting or may "date" and "sign" the proxy printed below and return it by November 6th to the office. Printed below is

the Official Notice, a copy of the agenda, and proxy for the return. Should you have any questions, please feel free to call Bob Rohrer, Manager, CCFB at 708-354-3276.



Farm Families Instill 'Live to Serve' Mantra

Our son woke up Thursday and immediately wished for Friday. I snuffed the opportunity to talk about "not wishing your life away." Rather, I allowed him to anticipate the major set-up day for our community's agriculture festival as he stretched life into his legs before stepping out of bed.

On that Friday of significance, our FFA and 4-H families assembled a festival of free farm fun in our small town. Our kids love to arrive to the festival site promptly after school on that Friday to experience the extensive set-up process that basically turns the village park into an agritourism farm. The kids eagerly anticipate the opportunity to see the activities before the general public and to help get everything rolling, quite literally. They want to make sure that the "human hamster wheel" (a five-foot diameter, dual-wall culvert) rolls just fine for the festival's attendees. They test the hay bale climb, a grouping of various-sized round hay bales to jump across. And they check that the water from the pitcher pumps flows well for the homemade duck races.

The kids work some, too. But in all of this play on the side, I like to think they learn, observe and inject community service into their psyche. I read and hear about Illinois Farm Bureau families who serve in their communities and lead events. They prepare the county fairgrounds for livestock and exhibitors. They sponsor youth safety programs about

bikes, lawnmowers and fire. Families coordinate clothing and blood drives, flu clinics and health screenings at their county Farm Bureau buildings. The same families work the church kitchen and dining room ahead of a community dinner. They set-up for the school carnival, decorate for the annual FFA Banquet, and understand the overwhelming task of planning a food stand as a fundraiser.

It seems the planning for community and family events here at home opened our daughter's eyes to event planning as a career option. Meanwhile, I sometimes open my eyes in the morning, questioning so many commitments when the green beans need picked and back rug needs vacuumed.

Through volunteer work, we bond with our friends, neighbors and relatives. We see the opportunities to make a difference and visibly measure the impact of fellow volunteers using their skills and resources. I also believe the volunteer process from planning to execution reflects the passion for service instilled by generations before us. If I were to guess, that generation likely tagged along as youngsters behind the community service scene, too.

About the author: Joanie's family grows corn, soybeans and hay and raises beef cattle in West-Central Illinois. She is a wife and mother of two farm kids who cheer for wiener roasts.

OFFICIAL NOTICE

Notice is hereby given that the 97th Annual Meeting of the Cook County Farm Bureau will be held on Wednesday, November 8, 2017 at 7:30 p.m. at the Cook County Farm Bureau, 6438 Joliet Road, Countryside, IL. The purpose of this meeting is for the election of directors, submitting of annual reports, election of voting delegates and for the transaction of such other business that may properly come before this meeting.

Signed,

Janet B. McCabe

Secretary/Treasurer, Cook County Farm Bureau



Agenda

- a. Reading of Notice
- b. Determining Quorum
- c. Call to order
- d. Reading and disposal of any unapproved minutes
- e. Reports of officers and committees
- f. Unfinished business
- g. New business
- h. Appointment of tellers
- i. Election of directors
- j. Adjournment

The Nominating Committee has nominated the following slate of directors for election of a two-year term:

- James Bloomstrand
- James Gutzmer
- Janet McCabe
- Michael Rauch
- Mark Yunker
- Ruth Zeldenrust

PROXY

The undersigned, being a Voting Member in good standing of Cook County Farm Bureau®, does hereby constitute and appoint James Gutzmer, President of the Cook County Farm Bureau, or failing him, Patrick Horcher, Secretary of the Cook County Farm Bureau, to be his/her proxy at the Annual Meeting November 8, 2017 at 7:30 p.m. at the Cook County Farm Bureau building at 6438 Joliet Road, Countryside, Illinois, or any continuation or adjournment thereof, with full power to vote and act for him/her and in his/her name, place, and stead, in the same manner, to the same extent and with the same effect that he/she might were he/she personally present thereat, giving to said proxy holder full power of substitution and revocation. The undersigned hereby revokes any other proxy heretofore given by him/her.

Dated this _____ of _____, 2017

Signature

Printed Name

Return proxy to:

CCFB, 6438 Joliet Road, Countryside, IL 60525

by November 6th, 2017

Fax to 708-579-6056 Scan and email to ccfb@cookcfb.org

From the Farm Desk...

Farmers go after 'fear-based' marketing (USA Today). The National Milk Producers Federation is going after 'fear-based' marketing and false labels in its new "Peel Back the Label" campaign. The group is urging companies to stop using labels such as "GMO-free," saying such slogans are raising fears unnecessarily about things like GMO products, synthetic animal-growth hormones and high fructose corn syrup.

Irma wrecks Florida ag (MSN Money). Florida's fruit growers and farmers are beginning to assess Hurricane Irma's damage to the state's citrus, sugar cane and vegetable crops – and it looks as though it will be extensive. "Irma went right up the middle. It didn't matter where you were, because Irma was so wide," said Mark Hudson, Florida state statistician with USDA-NASS. The Florida Fruit and Vegetable Association is reporting a 50 to 70 percent crop loss in South Florida, depending on the region.

Rural Communities continue to shrink (Illinois News Network). Rural Illinois lost more than 50,000 people between 2010 and 2016. Larger employers have closed and recent college grads have been unable to find hometown jobs that support their higher education levels.

STB Rejects Great Lakes Basin Application. Ruling the application incomplete, the U.S. Surface Transportation

Board (STB) Thursday rejected Great Lakes Basin Transportation's (GLBT) application to construct and operate a rail line through Illinois, Indiana and Wisconsin. In its ruling, STB called the financial information provided by GLBT "fundamentally flawed," making it impossible for the Board to determine whether GLBT can meet the statutory criteria. The proposed 261-mile railroad would have cut through prime Illinois farmland. Affected county Farm Bureaus and the Illinois Farm Bureau® opposed the project. Nearly 5,000 acres of farmland would have been impacted to build the rail line and another 14,700 acres for the project's proposed railport at Manteno.

New Holland unveils methane-powered tractor to U.S. (FarmWeek). New Holland's focus on biofuel-powered tractors took another step forward as it introduced a methane-powered machine to the U.S. at the Farm Progress Show in Decatur. The innovative T6 Methane Power tractor, a second-generation prototype, has been extensively tested with good results in six European countries. Able to run on fuel made from food waste, manure or biomass crops, the machine is another step toward energy-independent farms.

Farmdoc Video Discusses Farmland Prices (FarmWeek). A new farmdoc video features the latest outlook for Illinois crop farming income, cash rents, farmland prices and ag will credit. To watch the video, visit www.farmdoc.illinois.edu/webinars

Cleaner Engines, Better Performance

- **Dieslex® Gold**
- **AkroGold® Gasoline**
- **Suprex® Gold Lubricants**

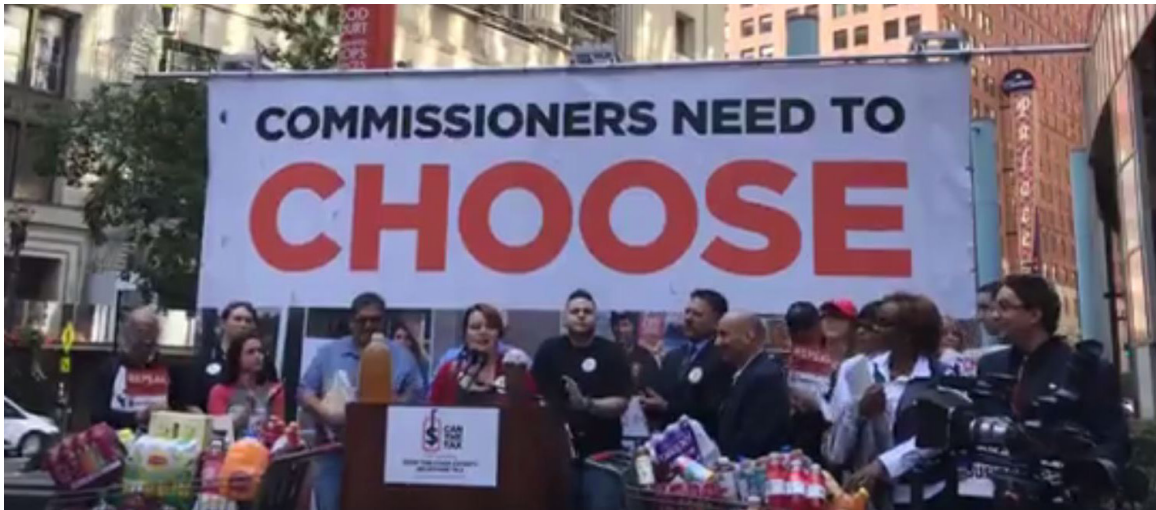
Try our Synthetic
**5W-40 for better
fuel economy**

Call Now! **800.924.9942**



PUBLIC POLICY UPDATE

Farm Bureau Remains Actively Opposed to the Sugar Tax



Cook County Farm Bureau® joined area businesses and families to ask Cook County Commissioners to repeal the beverage tax. Farm Bureau policies oppose beverage taxes and ask government officials to make economic decisions that improve economic stability and growth of the county. The beverage tax is scheduled to be heard on October 10. Members are encouraged to contact their Commissioners and ask them to “Can the Tax.” A list of Commissioners and their contact information is available at <http://stopthecookcountytax.com/content.aspx?page=about>.

Cook County Farm Bureau® sent the following letter to Cook County Commissioners:

In 2016, Cook County Farm Bureau opposed the implementation of the Sweetened Beverage Tax Act. We remain opposed to the tax.

As a partner in the food and beverage industry we are concerned about a beverage tax in Cook County. Cook County residents already face heightened taxes that negatively impact the county’s business climate, like the increase in sales tax. Commissioners should not be considering another tax that will hurt businesses and job growth in Cook County. Cook County businesses are collapsing under the burdensome ordinances implemented by Cook County government- the sales tax increase, mandatory sick leave, and a minimum wage increase.

Beverage tax hurts families in Cook County by increasing costs and cutting jobs. The beverage industry’s presence is felt across the state from can manufacturers to delivery

drivers to grocers, restaurants, and our member’s movie theatres.

Nearly 100,000 Illinois residents are either directly or indirectly employed by the non-alcoholic beverage industry. These jobs create \$6.2 billion in wages.

The tax adds 68 cents to the price of a two-liter bottle. This is a 68 percent tax on a common household item. This tax will add \$1.44 or 32 percent to a 12-pack of soda.

American Farm Bureau Federation® policy #159 states that Farm Bureau opposes anyone dictating which foods should and should not be eaten including imposing “health taxes” on food and beverages. The policy also opposes using taxpayers’ money for the purpose of legislating or controlling the diets of American people.

If you have any questions regarding this issue or would like any additional information, please feel free to contact me at 708-354-3276 or via email at bona@cookcfb.org.

Farm Bureau Sets Local Legislative Priorities

Governmental Affairs Committee members approved the following priorities during a recent meeting:

We will actively work to repeal the one percent sales tax approved by the Cook County Board in July of 2015 and will actively oppose future additional tax increases.

We will work to ensure that hay and row crop farming opportunities remain available to local farmers interested in pursuing rental agreements with the Cook County Forest Preserve District. If requested, the Cook County Farm Bureau® will provide assistance with advertising available parcels, the rental process, paperwork, and deadlines.

We will work to ensure that agriculture is protected during incorporation discussions. Unincorporated Cook County is home to most of the county’s production agriculture industry.

We will work to ensure that urban agriculture, including but not limited to urban farms, community gardens, and school gardens,

remain permissible under municipal and county ordinances. Farm Bureau will work with those groups and organizations engaged in urban farming, community gardens and school gardens when feasible.

We will work to ensure that farmland in Cook County is assessed in a fair and reasonable manner. Additionally, we will work with the Cook County Assessor’s Office to further streamline the farmland affidavit process.

We will work the Cook County Department of Building and Zoning regarding local farms, farm buildings, and the farm exemption process in unincorporated Cook County.

We will actively work to ensure that modern farming practices are not deemed a nuisance under Cook County ordinances.

The above priorities were communicated to County Board members, separately elected Cook County officials, and City of Chicago aldermen.



Representatives Elaine Nekritz, from Buffalo Grove and Joe Sosnowski, from Rockford visit with the Illinois Wool and Fiber Mill in Belvidere during a recent Adopt-a-Legislator visit. Representative Nekritz has been an active participant in the program and is “adopted” by Winnebago-Boone County Farm Bureau®.



Senator John Mulroe welcomes farmers from his “adopted” county farm bureau to his northwest Chicago district. Cook and Shelby County Farm Bureau® members visited the Chicago Police Department (District 16) before visiting Eli’s Cheesecake. Senator Mulroe is “adopted” through the Adopt-a-Legislator® program.



By Bona Heinsohn

Manifolds, Manolos, and Manure

Let me tell you a story about my blue-eyed girl’s blue-eyed rabbit.

A little over a month ago we brought home this teeny-tiny New Holland Lop bunny. He’s nothing but ears and a fluffy tail. In a flurry of activity, we bought a hutch (we couldn’t find our old one), food, water bottle, and shavings. Everything you’d need to bring a bunny home.

About a week later, we bought him a litter box since bunnies supposedly can be litter box trained. Our blue-eyed bunny decided that the litter box is just not for him and instead opted to use it as his new bed and proceeded to sleep in it. So, we bought a second litter box thinking that he could sleep in one and use the second one for

its intended purposes. Negative. He naps in one then moves to the other. You can guess what he does in the remaining corners of his hutch.

What you’d might have guessed about me by this time is that I’m a little picky about things. I like my car clean. House cleaner. And bathrooms spotless. The blue-eyed bunny apparently didn’t get the memo. Or he ate the memo. We’re also an animal family boosting a pair of corgis and some bad attitude cats. We’re frequently visited by “stinky kitty” aka the skunk.

The blue-eyed girl’s blue-eyed rabbit is more than just a furry mess maker. He’s her first 4-H project. My farmer and I tried to talk her into showing a nice-looking February dairy calf. In other words, an animal that lives outdoors. No success.

She said rabbits. We said okay and then asked if she’d consider cake decorating.

Like eight-year-olds before her she’ll make the trek to her 4-H meetings. Show clinics. Classes. And community service. My farmer and I are already thinking about fair and wondering if we can talk the fair board into moving the show until after the snow flies. Probably not likely. Instead we’re worrying about containing our big-little boy with no eye color, there are a lot of tractors and skid loaders at the fair. And the status of our digestive systems at animal haul away and clean-up.

Ignoring for a moment the status of our digestive systems after a week of delicious fair food, 4-H engages over 6 million youth, of which 1.8 million are from urban areas, like Cook County,

in hands-on learning opportunities. As part developing leadership skills, 4-H members are given the opportunity to develop pathways and to undertake projects of their choosing. Like rabbits in the case of my blue-eyed girl. And dairy and beef cattle in the case of my farmer. Or rabbits in my case.

We have no idea if our blue-eyed girl’s blue-eyed bunny will be successful next year. Nor do we really care. Instead, we want her to have a positive experience. We do know that 4-H will open doors and exposed our blue-eyed girl to opportunities, new ideas, and new experiences. For my farmer, it’s especially heartwarming because our blue-eyed girl is now a member of the very same 4-H club he joined when he turned eight.

MEMBER RELATIONS



A Medical Alarm Protects Your Loved Ones At Home With Just The Push Of A Button!

- Manufactured, assembled, and made in America
- Price will never increase and no contract required
- Longest range from base unit on the market, 600 ft minimum
- 100% waterproof



Members receive one month free of monitoring and no initial fees!



Phone: 217-994-9015
Toll Free: 855-872-8404
www.peaceofmindalert.com

New Member Benefit!



2407 SW 9th St., Des Moines, IA 50315 • toll-free 1.877.732.8258 • www.strokedetectionplus.com



Cook County Farm Bureau® Members Receive Discount on Stroke Screenings

Everyone has risk associated with stroke. Knowing your risk and getting a fast and painless stroke screening are your best defenses against a life threatening or life-altering event.

People over the age of 40 are encouraged to get tested especially with one or more of the following risk factors: high blood pressure, diabetes, more than 20 pounds overweight, smoke, have high cholesterol, inactive lifestyle, or have a family medical history of heart disease or stroke.

A stroke screening will help to identify these blood flow blockages. Stroke Detection Plus, a mobile vascular screening company, uses ultrasound technology to find blockages in the body's blood vessels that could lead to a stroke.



Stroke Detection Plus will be screening at:
Cook County Farm Bureau, 6438 Joliet Rd., Countryside on
Wednesday, October 18th from 9am-3:30pm.

A complete wellness profile (ultrasound screening for Stroke, Abdominal Aortic Aneurysm, Peripheral Arterial Disease, and Osteoporosis) is **only \$100 for Farm Bureau members. That is a \$35 savings** over the \$135 the general public will pay. Now, add an EKG to detect Atrial Fibrillation for just an additional \$35.

Appointments are necessary. To set up an appointment, call toll-free 1-877-732-8258.



Reminder

For your convenience, we provide Notary Public services to our members FREE of charge. Come into the Cook County Farm Bureau office in Countryside to have your documents notarized.

Cook Country Financial Representatives of the Month

The Financial Representative of the Month program is designed by Country Financial Agency Managers of Cook County to recognize overall Insurance Leaders in Life, Disability, Auto, Home, and Health production during the month.



Matt Whitsett

Chicago North Agency, Victoria Nygren, Agency Manager
Matt Whitsett has been named Career Financial Representative of the month for August 2017. His office is located at 4306 N. Lincoln Ave, #2F in Chicago, IL. His phone number is 773-267-1584. Matt has been a Career Financial Representative since November 2009.



Matt Powell

Chicago Northeast Agency, Joe Youngman, Agency Manager
Matt Powell has been named Career Financial Representative of the Month for August 2017. Matt's office is located at 4200 W. Euclid Ave, Suite E in Rolling Meadows, IL. His phone number is (847) 934-5117. Matt has been a Financial Representative since February 2005.



Joe Munch

Chicago Northeast Agency, Joe Youngman, Agency Manager
Joe Munch has been named Employee Financial Representative of the Month for August 2017. Joe's office is located at 25 NW Point Blvd, Ste 850, in Elk Grove Village, IL. His phone number is (847) 963-8835. Joe has been a Financial Representative since February 2015.



Zachary Youngblood

Chicago Northwest Agency, Jack Smith, Agency Manager
Zachary Youngblood has been named Career Financial Representative of the month for August 2017. His office is located at 10A W. Schaumburg Rd. in Schaumburg, IL. His phone number is 847-519-3595. Zach has been a Career Financial Representative since February 2002.



Renata Bondarowicz

Chicago Northwest Agency, Jack Smith, Agency Manager
Renata Bondarowicz has been named Employee Financial Representative of the month for August 2017. Her office is located at 2435 W. Schaumburg Rd. in Schaumburg, IL. Her phone number is 847-891-6388. Renata has been a Financial Representative since July 2016.



Nick Zegar

Chicago South Agency, Marc Rogala, Agency Manager
Nick Zegar has been named Career Financial Representative of the month for August 2017. His office is located at 6438 Joliet Rd. in Countryside, IL. His phone number is 708-352-5560. Nick has been a Financial Representative since July 1998.



Tony Munno

Chicago South Agency, Marc Rogala, Agency Manager
Tony Munno has been named Employee Financial Representative of the month for August 2017. His office is located at 6438 Joliet Rd. in Countryside, IL. His phone number is 708-352-5581. Tony has been a Financial Representative since September 2012.



Tim Hartnell

Orland Park Agency, Cary Tate, Agency Manager
Tim Hartnell has been named Career Financial Rep of the Month for August 2017. His office is located at 1938 E. Lincoln Hwy, Unit 217 in New Lenox, IL. His phone number is 815-462-0023. Tim has been a Career Financial Representative since January 1993.



Dion Wilson

Orland Park Agency, Cary Tate, Agency Manager
Dion Wilson has been named Employee Financial Rep of the Month for August 2017. His office is located at 12130 S. Harlem Ave, Unit A in Palos Heights, IL. His phone number is 708-480-5097. Dion has been a Financial Representative since May 2017.



Bob Smith

South Holland Agency, Jeff Orman, Agency Manager
Bob Smith has been named Career Financial Representative of the Month for July 2017. His office is located at 8159 Dixie Hwy in Homewood, IL. His phone number is 708-798-4844. Bob has been a Career Financial Representative since March 1980.



Monica Moore

South Holland Agency, Jeff Orman, Agency Manager
Monica Moore has been named Employee Financial Representative of the Month for July 2017. Her office is located at 4845 167th St, Unit 101 in Oak Forest, IL. Her phone number is (708) 560-7777. Monica has been a Financial Representative since April 2015.

"546,000"

Co-Operators went to households in the last year!

Classifieds

All items listed are for the accommodation of the membership and without guarantee of the publisher.

Miscellaneous

1963 Player piano. Walnut, 45 rolls. Conover Cable Piano Co. \$1,200, Northbrook area. Call 630-479-1160.

Giving away, FREE of charge: 2 Analog televisions. Just pick them up. Call Michelle Harris for further details at 773-488-3424.

Lawn Christmas "Toy Soldier" decorations, light up, 2 1/2 to 3 1/2 ft. tall: 5 with black hats, 2 with white hats and one major with white hat and mustache (taller too). Excellent condition, \$250 OBO. Please call 708-826-0000.

Misc items for sale: High end gun collection for sale. Long guns & handguns, home defense shotguns & AR rifles. Various taxidermy animals for sale. Hunting items such as decoys, roboducks, and other forms of hunting gear for sale. Also selling a Swedish made partner masonry saw, electric, Model K2300e1. Exc. condition, used twice. Paid \$1,200, will take \$550 OBO. Call Jim for details: 773-581-4400

Misc items for sale: 1) Helenbrand Watermate 3 water conditioning system water softener. Model WM 3-32 gr. Used three years. Never run out of soft water with this twin tank softener. \$600 OBO. 2) 5' almond color polyvinyl fence. 179.5' plus two 5' wide gates with standard hardware and posts. Scallop top with gothic style post caps, dismantled. Needs to be cleaned. This is not a big box store fence. \$2,000. Call 708-349-0627.

New 8 volt battery. Approx size 7" x 9" x 7". Best offer over \$40. Call 708-388-0122.

Motorized Vehicles Boats & Accessories

2014 Ford Fusion Hybrid SE, navigation, remote start, ruby red, leather, dune color, moon roof, luxury pack, reverse sensing, 42 mpg, sharp, excellent cond. 62,000 miles. \$13,000 OBO. Call 847-515-7447.

Best offer: Craftsman GT Automatic/46" cut Kohler 20V twin rider mower, model #917.272960. Call 630-479-1988.

2002 Jaguar XKR convertible super charged, limited edition, 17,000 original miles. Every available option, pristine condition, new tires. \$32,500 OBO. Call 773-581-4400.

Ford F700 stake body, like new, 1987, clean, 35,000 miles, asking \$4,000 OBO. Farm truck. Call 708-712-9878.

Wanted

Wanting to buy your HO scale or N scale electric train engines, cars, buildings, or anything train related. Do you have electric trains in your closet, basement, crawl space, attic or garage that you're not using? I buy train items from just a few pieces to hundreds of pieces at a time. Why sell them bit by bit, I'll offer you a price on all you have! I'm retired and just enjoy trains. I realize that some may need work from sitting for a long time, but I have the time to fix them! TURN THOSE UNWANTED TRAIN ITEMS INTO CASH, and give me a call! I also buy slot cars. Call 630-272-4433 ask for Ron. Thanks!

Wanted to Buy: Old 5 gallon glass drinking water bottles, jugs, miniature jug bottles, decanters and jugs, stone ware and old glass jugs. Also looking for old fishing tackle, lures, and older outboard motors. Call 708-361-8230.

If you have a photo of the item(s) that you are selling (Auto, Home, Furniture, etc.) you can email it to us to include it on our 'Classifieds' page on our website along with your ad. All ads that we receive for the Co-Operator are also listed on our website at cookcfb.org/membership/classifieds.

Email your photo along with your ad to membershiplinda@cookcfb.org.

FREE Classified Ads for Cook County Farm Bureau members

All Cook County Farm Bureau members may run four non-commercial classified ads annually free in the Cooperator. Only items of personal property will be accepted. **Ads must be in the office by the 15th of each month.**

Category: For Sale Misc. For Rent Wanted

Name _____

Farm Bureau # _____ Phone _____

Ad _____

*Please be sure to include a contact phone number where interested buyers can contact you. Ad can be typed or written. PRINT CLEARLY. (If not enough room, put on separate sheet)

Complete the above form and mail to:

Cook County Farm Bureau, 6438 Joliet Road, Countryside, IL 60525.

You can also fax your ad to (708) 579-6056 or email to membershiplinda@cookcfb.org

Non-member ad rate: \$.75 per word; \$15.00 minimum.



Are you a business owner and a member of the Cook County Farm Bureau®?

A Member-to-Member discount program was created to provide members who own businesses the opportunity to promote goods and services offered through their business to the other members of CCFB.

Please visit www.cookcfb.org/membermember.html for details, to sign up for the program, and to view a list of current participating member-to-member businesses.



Mention this ad and your registration fee is waived! (a \$50 value)



WE OFFER TUTORING IN:

- MATH (ALL LEVELS)
- READING (FLUENCY, COMPREHENSION)
- ENGLISH COMPOSITION (WRITING)

WE SPECIALIZE IN:

- IN-HOME & ONLINE TUTORING (K-12, COLLEGE, AND ADULT INDIVIDUALS)
- ONE-ON-ONE TUTORING
- EXECUTIVE FUNCTIONING (ORGANIZATIONAL SKILLS)
- STUDENT ACADEMIC COACHING
- HOMEWORK PROFICIENCY/ SUBJECT MASTERY

2 hours of tutoring per week for one year will increase a student by at least 2 grade levels

***We offer programs in the form of academic rehabilitation, bridge enrichment, ACT/SAT test prep, and our signature program- "MathMinds Elite" (building future mathematicians)**

Enroll now, year-long slots are filling fast!

Contact us for more info:

Facebook: EliteMindsTutoring

Email: info@elitemindstutoring.com

Website: www.elitemindstutoring.com

Phone: (312) 772-6604



But Wait, There's More!

Visit the Cook County Farm Bureau blog (www.cookcfb.org) for bonus Co-Operator articles and information!

- Farm & Food Bytes – short highlights of farm and food news, updates and facts.
- Details, agenda, content and registration information for the 2017 Illinois Farm Bureau Live Local Food Conference in Bloomington on Nov 6-7.
- Solar Farm Lease considerations & questions to ask should you be approached by a solar farm company.

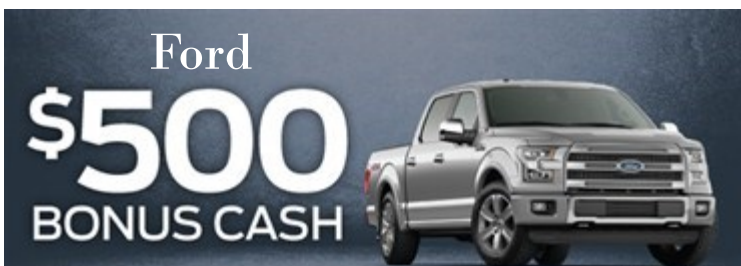


Cook County Farm Bureau will be hosting a "Shred Day" on Saturday, October 21, 2017 from 10 am to 12-noon at the Oak Forest Country Financial Building located at 4845 W. 167th St. in Oak Forest.

Bring any old documents that you would like to be shredded FREE OF CHARGE! Please call the CCFB at 708-354-3276 to make a reservation.

Free for members

The Cook County Farm Bureau Foundation 2016-2017 Annual Report is now available on our website under Cook CFB Foundation at www.cookcfb.org.



Cook County Farm Bureau members get \$500 Bonus Cash toward the purchase or lease of any eligible 2017/2018 Ford vehicle or \$750 Bonus Cash toward the purchase or lease of any eligible intelligently designed 2017/2018 Lincoln vehicle.

Enjoy valuable savings on your choice of vehicles from our comfortable and capable lineup! Take advantage of this exclusive special offer today by visiting our home page at www.cookcfb.org and click on 'Member Benefits'.

**Must be an eligible member for at least 30 consecutive days to take advantage of the Ford/Lincoln program.*

Motor Vehicle Rules for Illinois Farmers

The newest edition of "Motor Vehicle Rules for Illinois Farmers" is now available.

This publication—and individual topic pages—can be found by going to the FEATURED section of the home page of the Cook County Farm Bureau website www.cookcfb.org.

This publication expands on the previous version and includes:

- FVD & CFB Exemptions
- Driver Qualifications & the FVD
- Driver Qualifications & the CFV
- CFV Designation Application with Form
- DOT Physical Certification
- USDOT Number & the UCR
- Size & Weight Limits
- ATV Use on Public Roads
- Implements of Husbandry
- SMV Emblem
- Supervisor and Driver Training (Drug & Alcohol Screening Program)
- Wide Loads of Farm Equipment
- License Plates for Trucks
- Driver's License Types & Classifications

Be sure to check for revisions from time to time. Due to ever changing regulations, this publication is periodically updated.



It's Voting Member Renewal Time!

All Voting members recently were sent membership dues renewal notices. We encourage your prompt membership payment. Our renewal date for farmer members is November 1, 2017. Please also consider supporting the CCFB Foundation and the CCFB PAC as well.

For Associate members who hold policies with COUNTRY Financial, your annual county/Illinois Farm Bureau membership dues will likely be included with your insurance premium in one billing for most personal lines policies. There are certain circumstances in which the membership does not combine on an insurance bill. Instead, a stand-alone dues notice will go out. We ask members not to ignore this stand-alone invoice. For those whose Farm Bureau dues payment is combined, you will only need to make one easy payment to COUNTRY Financial and we'll take care of the rest! Upon renewing your membership, we will send your membership card as well as various membership related information on savings, discounts and

services.

For those Associate members that do not have Country Mutual or Country Preferred Insurance, you will receive a standalone bill from the Illinois Farm Bureau/Cook County Farm Bureau. Your dues notice will have the latest membership brochure. In addition, your membership cards will be enclosed in the billing and can be activated upon your payment of your membership.

We want to thank all of our faithful and supportive members of this general farm organization in Cook County. Your membership renewal benefits you personally and provides great enhancement for Agriculture's presence in Cook County.

Should you have any questions, please feel free to contact the Cook County Farm Bureau's Member Service Center at 708-354-3276. We look forward to serving you!

Slow Moving Vehicle Emblem is not a Driveway Marker

Farming is a job for all seasons. Farmers travel with their equipment on local highways and roads year-round, as well as during planting and harvesting.

As we enter the Fall harvest season, Cook County Farm Bureau wants to make sure that everyone is aware of farm equipment traveling on local highways and roads. Farmers have to travel between fields to move their equipment; they do this in the best way possible. The tractors and machinery that they are driving do not travel at the rate of speed that the typical automobile travels. So they are marked with a Slow Moving Vehicle Emblem (SMV). An Illinois Vehicle Code requires certain vehicle types to display the SMV emblem when operated on public roads – day and night. This includes farm equipment.

The SMV emblem's unique triangular shape and red/orange color combination gives motorists advance warning that the vehicle they

are approaching is moving slowly. Any use of the SMV emblem other than for these vehicle types, such as driveway or mailbox markers, or on trucks or trailers, is prohibited by Illinois law.

Any misuse takes away from the intended meaning of this recognizable traffic symbol. For this reason, Illinois law prohibits its use on stationary objects and other vehicle types. Penalty for improper use can result in a \$75 fine.

In an effort to promote rural road safety, Cook County Farm Bureau asks residents to never use the Slow-Moving Vehicle (SMV) emblem to mark driveways, mailboxes, or other fixed objects. Please help keep everyone safe

with proper SMV use to preserve its true meaning.

The Cook County Farm Bureau has a small supply of driveway marker signs (highly reflective) that we will trade with members that currently use the SMV sign to mark

your driveway. Contact us at 708-354-3276 to set up trade.

Improper use



Proper use

