



# CO-OPERATOR

To serve all our members of the Cook County Farm Bureau® with meaningful and beneficial programs that reflect our agricultural heritage.

## Mark Your Calendar

MARCH		PAGE
23	Drawdown for Ag Education	1
24	Hemp 2021 Webinar	12
25	Ag Day	6
25	Preparing Wills and Trust	12
31	SHOP LOCAL Webinar	12
APRIL		
8	Earth Day Teacher Workshop	6
17/18	Conceal and Carry Class	12
MAY		
4	Pollinator Pot Workshop	12

For participation details on these programs and activities, check out the related information in this publication, go to [www.cookcfb.org](http://www.cookcfb.org), or contact the office at 708-354-3276.

You can register for most programs by using the member service center at [www.cookcfb.org](http://www.cookcfb.org).

## Question of the Month

**Each year, around the first day of Spring, National Agriculture Day is observed as the foundation and backbone of our healthy and prosperous nation through the efforts of farmers, workers and those connected to the Ag industry. What is the date for this year's National Agriculture Day?**

Call the Farm Bureau at 708-354-3276, fax your answer to 708-579-6056 or email to [fbcooperator@gmail.com](mailto:fbcooperator@gmail.com) to enter the drawing for a \$25 gas card. (Please include name, FB# and phone number)

February's Winner is Mary Gulley

What is the title of the American Farm Bureau Federation farm book of the year??

Answer: "Tales of the Dairy Godmother: Chuck's Ice Cream Wish"

## The Co-Operator delivery update...

The Co-Operator, the monthly publication for Cook County Farm Bureau members, continues to be published on a monthly basis with the intent of it being delivered to members' mailboxes the first week of each month. Delivery delays have occurred in recent months due to substantial increases in holiday packages and other large mail obligations of the Postal Service. Now that the holidays have concluded, we are hopeful that delivery delays will be minimal. We want to thank our members for sharing delivery concerns with us and for your patience during this unusual time. The E-Co-Operator, the electronic version of the Co-Operator publication, is sent to member's email addresses close to the first day of each month. Please let us know if you prefer to sign up for this method of delivery by calling our office at (708) 354-3276 or email [juanita@cookcfb.org](mailto:juanita@cookcfb.org).

## Last chance for Drawdown for Ag Education tickets...

**Tickets available while supplies last. A maximum of 300 tickets to be sold**

COOK COUNTY FARM BUREAU FOUNDATION FUNDRAISER

# DRAWDOWN FOR AG EDUCATION

## MARCH 23, 2021 | 7 PM

### \$100 PER TICKET

**A MAXIMUM OF 300 TICKETS WILL BE SOLD.**

The Drawing will occur virtually using Zoom

The top prize (if all tickets are sold) will be \$3,000 with smaller prizes provided during drawing breakpoints

To purchase tickets go to: <https://bit.ly/2KpKNsY>  
 call the office to make payment with a credit card  
 or mail a check to the address below.

\*Must be 18 years or older at the time of entry purchase. The intended purposes of the proceeds from the drawdown raffle is to provide funding for the Cook County Farm Bureau's award-winning Ag in the Classroom program, fund higher education scholarships for members/dependents pursuing a future agriculturally related career and to provide funding for a Foundation sponsored internship focused on supporting the agriculture literacy program of the organization.

For official rules please go to [www.cookcfb.org/foundation](http://www.cookcfb.org/foundation): Cook County Farm Bureau Foundation 6438 Joliet Rd., Countryside IL 60525 708-354-3276

## Shop Local Directory Provides Simple Tools to Connect Growers



Growing Our Community Together

Our Shop Local directory provides simple yet powerful search tools to connect growers, buyers, sellers, and consumers. Join and register your business today. Whether you are a farmer looking to reach new customers or a consumer looking for fresh produce, local dairy, or a brewery in your area – our Shop Local directory is a MUST-HAVE resource!

Member Ag businesses that are already a part of our Farm Products Locator have a profile on Shop Local!

- Just login using your contact email to access and update your profile today or as often as needed! The more information you place on your profile, the more searchable you become to the consumer and across a joint network of affiliations. You can also add an e-commerce store or link to an existing store. And more!

Visit us at <https://cookcfb.org/discover-local/shop-local> or contact

Debbie at [membershipdebbie@cookcfb.org](mailto:membershipdebbie@cookcfb.org) for additional details.

Not a part of the directory – Register Your Local Food or Farm Business Today at <https://foodmarketmaker.com/registration>.

Because of our partnerships, updating your MarketMaker profile enables automatic updates across multiple platforms, including Illinois Farm Bureau, Illinois Specialty Growers Association, Illinois Farmers Market Association, Farmer Veteran Coalition of Illinois, and the newly added Buy Fresh Buy Local Illinois. All these affiliations are important ways to increase sales and access.

Shop Local is brought to you through a partnership with Illinois Farm Bureau, in cooperation with the Illinois Specialty Growers Association, and Illinois MarketMaker.

## Who We Are...

Cook County Farm Bureau is made up of many members including farmers, landowners, foodies, greenhouse operators, specialty growers, food consumers and customers of the Farm Bureau's affiliated companies (Country Financial, Conserv FS, IAA Credit Union, etc.). We bring together many members with diverse backgrounds and food interests to support the success of local farmers and to keep agriculture present and strong in Cook County.

This Co-Operator publication is designed for members to share more about how Cook County Farm Bureau is working for local farmers and agriculture and to help our members know more about farming, food, fiber and bio-fuels. As an added value, we provide great membership deals, savings, discounts, benefits, programming and activities that reflect our agricultural heritage and members' modern expectations.

Please enjoy reading and thank you for your support of area agriculture and your membership!





The spring issue of *Illinois Farm Bureau Partners* magazine should have arrived in your mailbox. Also, be sure to check out the various farm feel-good articles, great places to see in Illinois, local food facts, recipes, nutritional information, gardening tips, financial information, and the special Cook County Farm Bureau page. More information, articles, and past issues are available at [www.ilfbpartners.com](http://www.ilfbpartners.com).

## 5 things members should know about... The Cook County Farm Bureau Commodities/Marketing Team

1. Team members are volunteers within the Cook County Farm Bureau with a desire to help farmers and potential farmers succeed financially in Cook County by providing information, programming, and tools to assist.
2. Team members are made up of volunteers with expertise in equine, greenhouse, and traditional farming; ag engineering; small farm consulting; soil expertise; and environmental and farming sustainability. What a team!
3. The Commodities & Marketing Team sponsored the first Cook County Farm Bureau's annual Giant Pumpkin Contest in 2000; the contest produced a record setting 1,117-pound pumpkin.
4. The Team is generous: annually offering grants to assist community gardens in Cook County and creating partners with CCFB member businesses. The team also works with our Foundation to offer financial assistance for members interested in training to become county Master Gardeners or enrolling in Master Urban Farmer Training Program through the U of I Extension, Cook County unit.
5. The team works with Farm Bureau staff to develop and deliver programming resources for our members. Popular firsts include: Creating a Small Farm Enterprise, Farming on your Balcony, Beekeeping, Intro to Chicks, Hemp, Food, & Farming Forums, Meet the Buyers, Land Lease, Regulation & Compliance, Timber Harvesting, Farm Dinner, Farm Crawls, How to...Grow a Giant Pumpkin, Make a Planter, Marketing for Today's Consumers, Going Organic, Vineyard Growing, Using Drones in Ag, Composting, Going Solar, CookFresh Recipe Brochures, and more!

This Team can trace its roots back to the inception of the CCFB 100 years ago!

Note: Members interested in participating in the C/M Team or in supporting their goals and objectives can contact Deb Voltz of the Cook County Farm Bureau, at [membershipdebbie@cookcfb.org](mailto:membershipdebbie@cookcfb.org).

## Congratulations to Board Member, Todd Price



The Cook County Farm Bureau congratulates board member Todd Price for the statewide award he received recently as a part of his role as superintendent of the Glenview Park District. On January 28, 2021, the Illinois Park and Recreation Association (IPRA) honored Price with the IPRA Community Impact Award for his commitment and excellent service to parks and recreation in Illinois. The award celebrates Todd's efforts in relationship-building and impactful, philanthropic opportunities for constituents in Glenview.

Past issues of the Co-Operator are available online at [cookcfb.org/stay updated](http://cookcfb.org/stay updated)



## Gratitude Journal

Each month, there are people that go out of their way to lend a hand to help with our cause in many ways, both big and small. We appreciate it greatly!

### The Cook County Farm Bureau thanks...

Nick DeGroot, Janet McCabe, Mike Rauch, Todd Price, Dan Biernacki, and Jack Smith for taking time to record their reflections as part of Cook County Farm Bureau's 100-Year Celebration. Interviews are available at <https://cookcfb.org/ccfb/100-year-celebration-and-our-history/> anniversary-interviews.

Donna and Sam Nykaza – Jones for sending us the following thank you note: "To all at the Cook County Farm Bureau – just a quick note of thanks to all of you that were involved with the 'meet a face' article in this past January edition! We love seeing the final version in print have gotten a few congratulations from family and friends! My dad, Ray, always got a kick out of seeing his picture in the Co-Operator and now I know how he felt! Thanks again for a lovely job!"

The many members that are contacting us to purchase a Drawdown for Ag Education reverse raffle ticket to benefit the scholarship program, Ag in the Classroom program, internship and farm experiences for youth sponsored by the CCFB Foundation.

The Corporate sponsors of the Drawdown for Ag Education which include Tee Jet Technologies, IAA Credit Union, the 6 Country Financial Agencies located in Cook County (Chicago North, Chicago South, Chicago Northeast, Chicago Northwest, Orland Park and South Holland/Oak Forest agencies), the Poole family and the Rohrer family (at time of publishing).

Jessica Biernacki for her 4 years of leadership as Chair of the Young Leaders Team.

Tom Poole, Blake Lanphier and Karina Barrios for accepting leadership roles within the Young Leader Team.

Member Adnan Hasan for a nice conversation about the Cook County Farm Bureau's political and governmental affairs process and actions.

Member Anne Biagi, winner of our Ag Adventures basket, and the 25 other members that submitted the 12 months of the Ag Adventures page word search in 2020.

## Congratulations Mrs. Anne Biagi



Congratulations to Farm Bureau member Mrs. Anne Biagi of Brookfield for completing all 12 months of Ag Adventure page crossword puzzle featured in the *Co-Operator* in 2020. A total of 25 CCFB members also completed all 12 months of the puzzle and Mrs. Biagi's name was drawn as the winner of a local agriculture gift basket. Cook County Farm Bureau manager Bob Rohrer presented the basket to Anne which included pumpkin seeds, a soy candle, corn holders, local honey, popcorn, a variety of our favorite Ag in the classroom books, locally produced products such as oatmeal and tootsie rolls, and much more.

## Co-Operator

published monthly

Cook County Farm Bureau

6438 Joliet Road, Countryside, IL 60525

(ph) 708-354-3276 (fax) 708-579-6056

(e-mail) [ccfb@cookcfb.org](mailto:ccfb@cookcfb.org) (website) [www.cookcfb.org](http://www.cookcfb.org)

USPS No 132180 Periodical Postage Paid at LaGrange, IL 60525 & additional mailing office

### Editor

Bob Rohrer

### Copy Analyst

Ashley Christensen

### Copy Development

CCFB Office Staff

### Officers & Directors

Janet McCabe, President

Michael Rauch, Vice President

Ruth Zeldenrust, Secretary-Treasurer

Dan Biernacki

James Bloomstrand

Roger Freeman

James Gutzmer

Patrick Horcher

Gerald Kopping

Todd Price

Tim Stuenkel

Mark Yunker

### Farm Bureau Manager

Bob Rohrer

### Office Staff

Jill Drover

Bob Heine

Bona Heinsohn

Diane Merrion

Juanita Ramos

Melanie Senne

Katie Smith

Kelli Villarreal

Debbie Voltz

### Affiliated Companies

Jeff Orman ..... Insurance Agency Manager, South Holland

Victoria Nygren ..... Insurance Agency Manager, Chicago North

Jeff Maxson ..... Insurance Agency Manager, Chicago South

Kevin Gomes ..... Insurance Agency Manager, Chicago Northwest

Sharon Stemke ..... Insurance Agency Manager, Chicago Northeast

Cary Tate ..... Insurance Agency Manager, Orland Park

David Swigart ..... General Manager, Conserve FS

Postmaster - Mail Form 3579 to 6438 Joliet Road, Countryside, IL 60525

"Co-Operator" (USPS No 132180) is published monthly as a membership publication for \$2.50 per year to members as a part of their annual membership dues by Cook County Farm Bureau, 6438 Joliet Road, Countryside, IL 60525. Periodical postage paid at LaGrange, IL and additional mailing office. Postmaster: send address changes to the Co-Operator, 6438 Joliet Road, Countryside, IL 60525.

The Co-Operator, the monthly publication of the Cook County Farm Bureau®, is available to members through mail delivery, email, or by viewing online at [www.cookcfb.org](http://www.cookcfb.org). Members that wish to receive the publication solely by email can let us know by sending an email to [juanita@cookcfb.org](mailto:juanita@cookcfb.org) with the subject: E-Cooperator.





# Downwind

by Bob Rohrer, CCFB Manager

## “Retiring An Old Workhorse”

The ditty “the old gray mare ain’t what she used to be” popped into my head as I started to write this month’s column. I could be talking about myself with my whining about aches and pains increasing each day but actually, I’m thinking about my old, snowplow tractor.

As a result of my farm background, I really enjoy tractors... large, small, new, old, diesel, gas, propane, four-wheel-drive, open-air, cab, row crop. It really doesn’t matter... I just like tractors. As a kid, I poured over the tractor and lawn tractor for sale ads in farm magazines and newspapers. Dreaming about the possibilities.

I call it a “tractor” because it makes me feel closer to my farm roots. However, my snowplow “tractor” is really a big, old hunk of iron lawn tractor minus the mower deck. It is nearly 50 years old. It has chains for the back tires and a hefty 42-inch steel blade to move snow around and pile it high. Part of it is held together by baling wire.

The snowplow tractor comes with some idiosyncrasies much like me...

- like me, the tractor usually has to be jumpstarted.
- like me, it prefers to be kept in warm climate.
- like me, don’t pop its clutch because bad things happen related to “breaking”.
- like me, grind the transmission a bit to get it into gear.
- like me, put some air in the tires before each operation.
- like me, driving faster is better than slower to accomplish best results.
- like me, there’s plenty of rust under the hood and carriage.

Despite these idiosyncrasies, that old snowplow tractor has always gotten the job done. Back in 2012 when we bought our house featuring a long, winding driveway with a grade, I could not convince my wife that her strong back and amazing shoveling skills would be sufficient for our snow removal needs. So, I picked up the well-used workhorse to provide some assistance to her. Since that time, I have changed the oil, greased faithfully, tuned it up and learned the various tricks to keep it functioning. However, it always feels like just one incident away from total mechanical breakdown.

Eight years later, my snowplow tractor and I have enjoyed some big snow events (not so many in recent years). Speed racing up and down the driveway, snow flying provides a special thrill. Top gear, full throttle!

That is, until January. I was clearing 4 inches of fresh snow...no problem. Until it became a problem. No forward, no reverse but plenty of smoke and burning rubber smell. My wife and I hooked the tractor to the SUV and towed it up the hill of the driveway and pushed it into the garage. I had a baaaad feeling.

We jacked up the snowplow tractor to inspect the damage and discovered missing parts to the transmission system. Those parts were probably essential. Finding parts for a nearly 50 year old machine is not simple neither in a snow drift nor online. At that moment, the appeal and delight of keeping the snowplow tractor running vanished.

Off my wife and I went to shop for a snowblower... Wow, I really am becoming a suburbanite! We picked up a hefty two-stage, 24 inch walk behind with 6 forward and 2 reverse gears that could allegedly throw snow 40 feet. Following a month that featured daily snowfall including several big events, I become a reluctant fan. My wife enjoys using the new snow blowing machine whereas the tractor always scared her to run. Bonus!

And yet, I feel a sense of melancholy...like I have deserted an old friend. I put the old workhorse out to pasture (the corner of our garage). The crusty, old tractor accepted its fate silently and without resistance. Now, an accumulation of old carpet, coolers, tables, and chairs surround it. Every time I go in the garage, I know it is over there...looking and watching me, patiently waiting to go play in the snow again.

Did I act rashly? Perhaps I can find parts to repair it? It would feel great to be plowing snow with reckless abandon again rather than cautiously creeping up a driveway behind that shiny snowblower, afraid a stone will lodge in the snow auger and shear the pins.

Perhaps the tractor’s retirement was premature. Or maybe, I should just buy a bigger, newer tractor. A true farm tractor. Did I mention, I like tractors?

Bob can be reached at [brohrer@cookcfb.org](mailto:brohrer@cookcfb.org)

Recipe of the Month:

### Marinated Asparagus Salad

1998



**Ingredients:**

- 2 c fresh asparagus pieces, cooked to desired doneness
- 1 small red onion, thinly sliced
- 1 or 2 fresh tomatoes, chopped
- Salt & pepper to taste
- Italian salad dressing of choice

**Directions:** Combine all with enough salad dressing to moisten well. Stir gently, cover, and refrigerate overnight. Stir before serving. Makes 5 servings.



Recipe from our 2020 CookFresh Recipe Collection, booklets still available!

Please submit your recipes for the 2021 CookFresh Recipe Brochure by mailing to the Farm Bureau or email to: [membershipdebbie@cookcfb.org](mailto:membershipdebbie@cookcfb.org).



## Your Orland Park Agency



**Cary Tate**  
708-226-1111  
Agency Manager  
Orland Park, IL



**Piero Setta**  
708-226-0431  
7601 W 191st St  
Tinley Park, IL



**Jim Andresen**  
708-633-6490  
17605 S Oak Park Ave  
Tinley Park, IL



**Thomas Geraghty**  
708-425-9700  
5003 W 95th St  
Oak Lawn, IL



**George Parthemore**  
708-226-1896  
9432 W 143rd St  
Orland Park, IL



**Mike Skrabis**  
708-226-1666  
9731 W 165th St  
Orland Park, IL



**Tony Palumbo**  
708-403-5708  
7601 W 191st St  
Tinley Park, IL



**Mike Spadoni**  
708-425-1825  
3923 W 95th St  
Evergreen Park, IL



**Bob Johnson**  
708-429-9422  
17605 S Oak Park Ave  
Tinley Park, IL



**Dan Stumpf**  
708-614-1688  
17605 S Oak Park Ave  
Tinley Park, IL



**Bill Thompson**  
708-361-1304  
106 Stephen St  
Lemont, IL



**Nora Beverly**  
708-429-7789  
17605 S Oak Park Ave.  
Tinley Park, IL



**Brian Zielinski**  
630-257-6100  
106 Stephen St  
Lemont, IL



**Nick Burke**  
708-425-1816  
3923 W 95th St  
Evergreen Park, IL



**Mike Thauer**  
708-425-1559  
3923 W 95th St  
Evergreen Park, IL



**Erica Storrs-Gray**  
708-671-1465  
12130 S Harlem Ave  
Palos Heights, IL



**Terry LaMastus**  
708-754-5900  
3308 Chicago Rd  
Steger, IL



**Joe Voves**  
708-425-1527  
3923 W 95th St  
Evergreen Park, IL

9731 W 165th St, Suite 36  
Orland Park, IL 60467  
708-226-1111



0121-511HO

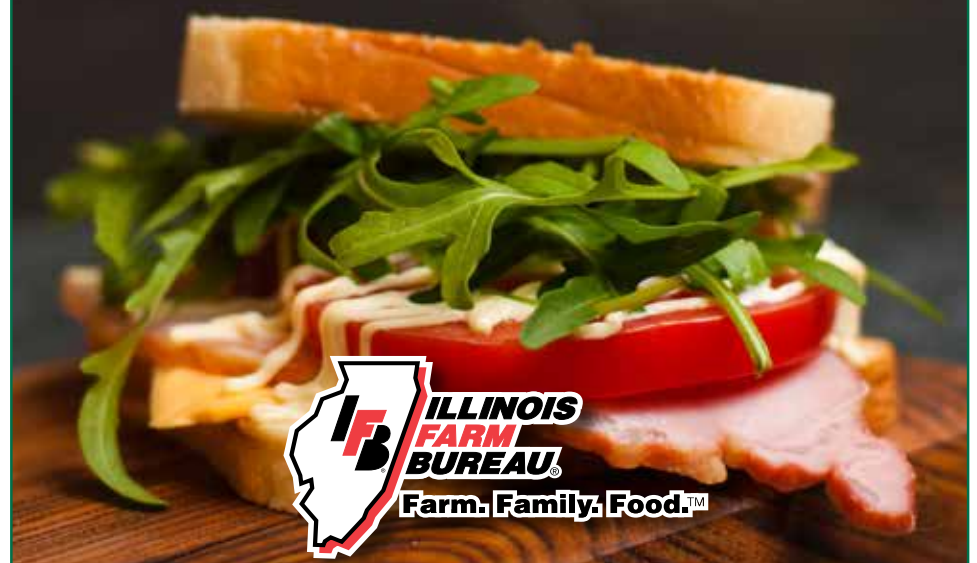


## NATIONAL AG DAY March 23, 2021

# AGRICULTURE: Food for life.

American agriculture is the foundation of our country. It’s the backbone of a healthy and prosperous nation that’s made possible by the hard work of America’s farms and farm families.

Illinois Farm Bureau® is proud to celebrate the nutritious and plentiful contributions of our country’s farms on National Agriculture Day.





# Poole elected Chair of the Young Leaders Team



Thomas Poole

Thomas Poole, a Professional Member from Chicago, was elected by his peers in February to the chairmanship of the Cook County Farm Bureau Young Leaders Team for a two-year term. He serves as a freelance consultant for food and agriculture organizations while pursuing his graduate degree from the University of Illinois at Urbana-Champaign. He also has a Bachelor of Science degree in Crop Sciences from UIUC and a Part 107 Drone License. Tom has been involved with Young Leaders since his collegiate career and previously represented the cohort and Cook County Farm Bureau in an organizational trip to Washington DC in 2019.

Tom has identified the following items that he would like to pursue through the Young Leaders Team...

1. Membership acquisition and retainment in YL  
 2. Networking with related organizations  
 3. Community service in areas of urgent need

1. Membership acquisition and retainment in YL
2. Networking with related organizations
3. Community service in areas of urgent need

"Ideally, I want to collaborate in building the brand of YL in Cook County", Poole added.

Elected to serve as the vice chair of the group is Blake Lanphier. Blake serves as the farm manager of Wagner Farm in Glenview. He has a bachelor-of-science degree in animal



Blake Lanphier

sciences from Iowa State University. Blake is a 2020 graduate of two-year agricultural leadership experience through the Illinois Ag Leadership Program.



Karina Barrios

Elected to the Recorder position for the group is Karina Barrios. Karina is employed by as a corporate food safety specialist for Ferrara Company in Chicago She is a past Ag literacy intern through the

Cook County Farm Bureau Foundation. Karina has a bachelor-of-science degree in Agricultural and Biological Engineering from the University of Illinois Urbana – Champaign.

The Cook County Farm Bureau expresses appreciation to Jessica Biernacki who effectively served as the chair of the Young Leaders Group for the past 4 years. We appreciate Jessica's leadership and ongoing enthusiasm!

Cook County Farm Bureau Members age 18 – 35 who may be interested in participating in the Young Leaders Team or activities are encouraged to contact chairman Tom Poole by emailing [tpoole2@illinois.edu](mailto:tpoole2@illinois.edu) or Cook County Farm Bureau manager, Bob Rohrer at 708-354-3276 or by emailing [brohrer@cookcfb.org](mailto:brohrer@cookcfb.org)



**CENTENNIAL LEGACY PATIO CREATED TO BENEFIT FOUNDATION**  
 A COMMEMORATIVE LEGACY PATIO IN HONOR THE FIRST 100 YEARS OF CCFB SERVICE TO MEMBERS  
 To mark the Centennial celebration of the Cook County Farm Bureau, the Farm Bureau and Foundation partnered to create a Commemorative Patio on the grounds of the Cook County Farm Bureau. The Commemorative Patio is close to the east entrance of the Farm Bureau building and features personalized memory pavers, three park benches, a wrought iron fence, and flower boxes. Members and Farm Bureau/Foundation supporters and partners can still support the project by purchasing a paver that will be incorporated into the patio. The paver can include the member or family name, encouragement, recognition, and other well wishes. Three sizes of paver are available and proceeds from the sale of the pavers go directly to the Cook County Farm Bureau Foundation's efforts to improve and enhance agricultural literacy in Cook County. Donation for the pavers are fully deductible per IRS guidelines. Go to [www.cookcfb.org](http://www.cookcfb.org) or call the CCFB office at (708) 354-3276 for order form or to donate.

## CCFB Centennial Goodie Bag available while supplies last



Members interested in a 100 year Goodie Bag can call the office and request a bag "curbside pickup"

The CCFB staff will bring your bag outside to you. (while supplies last)

- 100 – year coffee table book
- Anniversary calendar
- CCFB/Country coffee cup tumbler
- CCFB anniversary logo cap
- Throwback recipe brochure with cooking board
- Ink pen
- And more in a reusable shopping bag.

**Cook County Farm Bureau®  
100 YEAR ANNIVERSARY**

*Want More CCFB?*  
Step into the Farm Bureau virtually to find out more about our leaders, programs, events, highlights of 100 years and much more!

**VISIT OUR ANTIQUE FARM TOOLS SHED**

**HISTORICAL AG DATA**

**PLANTING OF THE TIME CAPSULE**

[www.cookcfb.org](http://www.cookcfb.org)  
(ccfb/our history and 100 year celebration)

*Virtual Timeline Tour*

**General Timeline**

**Public Relations**

**Historical Agriculture Data**

**Like us on Facebook**

**Follow us on Twitter**

**Follow us on Instagram**

## McCabe 100 Year Interview

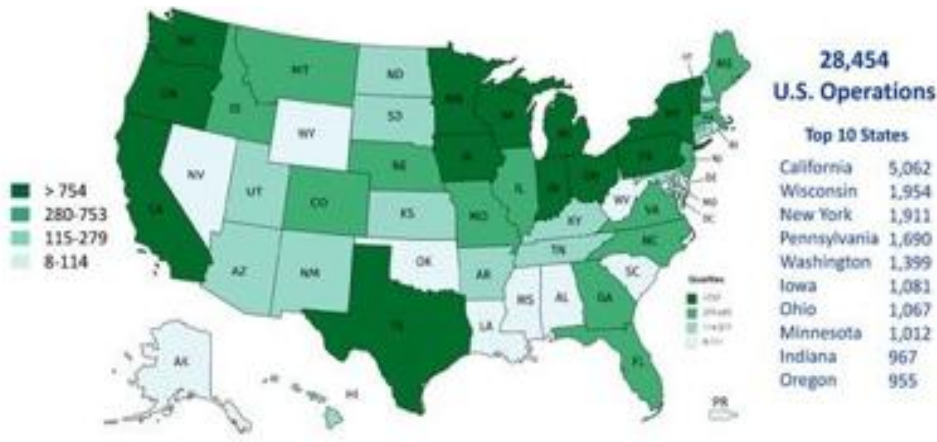


Cook County Farm Bureau® President Janet McCabe (pictured left) meets with Farm Bureau staff Bona Heinsohn to discuss and reflect on Farm Bureau's history and accomplishments as part of Cook County Farm Bureau's Centennial Celebration.

Board member Mike Rauch (picture left) discusses his tenure with Cook County Farm Bureau® with Bona Heinsohn during a recent interview. McCabe's and Rauch's interview are now available at <https://cookcfb.org/ccfb/100-year-celebration-and-our-history/anniversary-interviews>.



# Organic Farms Growing, Majority in U.S.



USDA recently released the annual count of certified organic operations calculated from the USDA National Organic Program Organic INTEGRITY Database. Worldwide, certified organic operations grew to 45,578 in 2020. More than 62% or 28,454 are located in the United States. California remains No. 1 domestically, with more than 5,000 certified operations. The Great Lakes

Region, Pacific Northwest and Iowa round out the top 10. The federal organic regulations currently require certifiers to annually submit a set of basic facts regarding all certified operations to the Organic Integrity Database. The database also includes many optional fields, such as acreage, that can aid in oversight and enforcement.

## USFWS Monarch Decision

In December of 2020, the United States Fish and Wildlife Service (USFWS) announced it would not list the Monarch Butterfly as threatened or endangered under the Endangered Species Act (ESA). Instead, USFWS found the Monarch was "warranted but precluded," which means the Monarch meets the criteria for listing as threatened or endangered, but they do not have the funding and/or personnel to devote to a listing proposal because there are listing actions (i.e., other species) with higher priority. The Monarch will, therefore, become a Candidate Species and will undergo an annual review to see if a listing is warranted under emergency listing procedures. The Service will propose a decision in 2024 based on its National Listing Workplan. This result, which allows more time for populations to recover and additional conservation to be implemented, is a direct result of progress shown to conserve the Monarch. Almost 49,000 efforts were submitted to the Monarch Conservation Database from throughout the United States, and they totaled over 5.6 million acres of conservation lands, which resulted in an estimate of almost 500 million stems of milkweed being grown. These tallies included land enrolled in USDA

conservation programs. The database aims to collect information on Monarch conservation efforts, which are defined by USFWS as "on-the-ground actions designed to improve the population status of monarchs." This information, along with population surveys, played a role in the ESA listing decision. Illinois Farm Bureau leadership, farmer members, and staff have been dedicated to conserving the Monarch. Since 2016, when the review of the status of the Monarch began, IFB staff have been involved in conservation efforts such as the Illinois Monarch Project and more recently led submitting data on over 200 conservation efforts to the database, which played a role in documenting the conservation that our members and partners put on the ground. IFB will continue to lead this effort with our partners on behalf of Illinois agriculture. Cook County Farm Bureau has been working with the Illinois Farm Bureau, the Illinois Monarch project, Brookfield zoo and other partners to develop local programming and efforts related to the Monarch butterfly in 2021. These plans include installation of a pollinator garden and educational programs for public entities and youth.

# Your Chicago South Agency

6438 Joliet Road | Countryside, IL 60525 | 708-352-5555



**Jeff Maxson**  
708-352-5555  
Agency Manager



**Robert Sweiss**  
773-498-7339  
6415 W. 63rd St.  
Chicago, IL 60638



**Theo Leonard**  
773-239-7800  
10414 S. Western Ave.  
Chicago, IL 60643



**Gwen Shaw**  
773-487-0919  
820 E. 87th Street, Ste 212  
Chicago, IL 60619



**Silver Castillo**  
773-284-5953  
6239 S. Archer Ave.  
Chicago, IL 60638



**Leo Maldonado**  
773-254-5810  
5716 S. Pulaski Rd.  
Chicago, IL 60629



**Martha Dominguez**  
773-254-5810  
3458 S. Halsted St.  
Chicago, IL 60608



**Kirk Gregory**  
773-239-7800  
10414 S. Western Ave.  
Chicago, IL 60643



**David DeSantiago**  
773-254-5810  
5716 S. Pulaski Rd.  
Chicago, IL 60629



**David Jara**  
773-284-5945  
6239 S. Archer Ave.  
Chicago, IL 60638



**Mike Sheahan**  
773-239-7800  
10414 S. Western Ave.  
Chicago, IL 60643



**Steve Phillips**  
312-583-1416  
1401 S. State St. #150  
Chicago, IL 60605



**Alonzo Nevarez**  
773-284-5539  
6239 S. Archer Ave.  
Chicago, IL 60638



**Ed Beavers**  
312-588-1404  
1401 S. State St. #150  
Chicago, IL 60605



**Tony Munno**  
708-352-5555  
6438 Joliet Road  
Countryside, IL 60525



**Nick Zegar**  
708-352-5560  
16614 W 159th St, #303  
Lockport, IL 60441



**Edgar DeLeon**  
773-498-1184  
6239 S. Archer Ave.  
Chicago, IL 60638



**Kirk Gregory, Jr.**  
773-619-0649  
1401 S. State St. #150  
Chicago, IL 60605



0920-514HO

## Cook County Farm Bureau® Support Cook County Families and Food Pantries

Together with partners, Cook County Farm Bureau® donated much needed food staples and essential non-food items to six Cook County food pantries.

The donations directly benefited the one in seven individuals in Cook County who are hungry. Partner food pantries, Alicia's House, South Chicago Heights; Lakeview Pantry, Chicago; Orland Township Food Pantry, Orland Park; Schaumburg Township Food Pantry, Hoffman Estates; St. Cletus Food Pantry, LaGrange; and Wheeling Township Food Pantry, Wheeling, were selected by local representatives from COUNTRY Financial®.

Representatives were from the following COUNTRY Financial agencies: Chicago North, Chicago South, Chicago Northwest, Chicago Northeast, Orland Park, and South Holland COUNTRY Financial offices.

Donations were raised in celebration of Food Checkout Day. Food Checkout Day celebrates the healthy and nutritious food local farmers grow and raise by providing food or cash donations to people in need.

Results of this year's Food Checkout Day will be available in the April edition of the Co-Operator.

## Nursing Scholarship Application Available

Applications are now available for nurse practitioner scholarships through the Illinois Farm Bureau® Rural Nurse Practitioner Scholarship Program. There will be 15 scholarships, worth \$4,000 each, granted this year.

The scholarship program, now in its 29th year, helps encourage and develop the pool of rural health practitioners to help meet primary health care needs in rural Illinois. Students who receive scholarships agree to practice for two years in an approved rural area in Illinois.

To be eligible for the scholarship, students must be Illinois residents and be a Registered

Nurse accepted or enrolled in an accredited Nurse Practitioner Program. Funding is provided by the Rural Illinois Medical Student Assistance Program.

Applications are available at county Farm Bureaus throughout the state or on the Rural Illinois Medical Student Assistance Program website at RIMSAP.com. For additional information, contact Donna Gallivan, program manager, Illinois Farm Bureau, PO Box 2901, Bloomington, IL 61702-2901; at 309-557-2350; or by email dgallivan@iffb.org.

Applications are due May 1.

### Summer Library program 2021

## The Many Colors of Agriculture

**Cook County Farm Bureau Agriculture in the Classroom is excited to invite your library to participate in this summer's iRead program. Register now for your agriculture related iRead program. We will feature ag-themed books to celebrate the many colors of agriculture. Program materials are provided by the Cook County Farm Bureau® Ag in the Classroom.**

**Virtual and in-person options will be available.**  
Dates are limited - book early for summer 2021  
Contact Jill at [aafc2@cookcfb.org](mailto:aafc2@cookcfb.org) to reserve a date.



## Ag Lit Bit

“Are You Clearing A Path?”



Diane Merrion,  
CCFB Director of  
Ag Literacy

February saw us clearing a lot of paths! The snow just did not end. Snowplows, snowblowers, and shovels worked hard all month long. I am hopeful that in March we get much needed sunshine and not more snow!

As we were working hard to clear our paths, author Peggy Thomas released her new book *Lincoln Clears A Path*. This is not a story about President Abraham Lincoln and endless snowstorms, but rather a book about a recurring theme in his life: clearing paths. In Thomas's book, she shares how Lincoln cleared a path that changed the landscape of agriculture including the creation of the USDA and the Morrill Act.

The Morrill Act provided each state with 30,000 acres of federal land for each member in their Congressional delegation. The land was then sold by the states and the proceeds used to fund public colleges that focused on agriculture, engineering, and the mechanical arts. Some states established new schools with their land-grant funds; others turned the money over to existing state or private schools

to be used for the establishment of schools of agriculture and mechanics (these came to be known as “A&M” colleges).

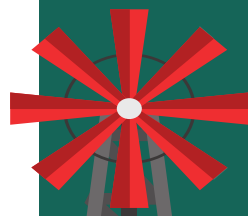
Today there are a total of 112 land grant institutions including University of Illinois. We are thankful to Lincoln for opening that path to further education and create opportunities for research and science in the field of agriculture.

Yet, here we are almost 159 years later, and these educational fields and college majors are still not well known in and around Cook County. The Cook County Farm Bureau® Foundation is clearing a path to help fill this gap with our Farm Shadow Program. These land-grant universities, as well as many other community colleges, colleges, and universities are here to provide degrees in agriculture, but many students have no access to what the careers options are or how to get information about them.

We would love to have you join our volunteer efforts to connect with a local high school classroom if you are an ag professional so you can continue the efforts that began so long ago. As Thomas's book reminds us, we all need to do our part to clear a path for the next generation.

For more information, contact Diane Merrion, [aitc@cookcfb.org](mailto:aitc@cookcfb.org).

## Ag Day 2021 March 25th 10:30-11:30



ZOOM your classroom to the farm as we celebrate our annual Ag Day event to highlight the importance of Illinois agriculture.

Classrooms unable to join our live program will be offered mini-lessons for independent use.

Reserve your spot at <http://bit.ly/2021AgDay>



Contact Diane for more information  
[aitc@cookcfb.org](mailto:aitc@cookcfb.org)

In conjunction with  
The Children's Farm  
at The Center



We welcome teachers to register for our annual Ag Day Farm Program that will be held virtually this year. This one-hour field trip is geared toward students in Grades 2-4 and includes six learning stations on agriculture including both livestock and plants. Participating teachers will receive a packet of pre- and post-activities and lessons from our Ag in the Classroom resources. Registration form at <https://bit.ly/2021AgDay> or email Jill at [aitc2@cookcfb.org](mailto:aitc2@cookcfb.org).

## Get to know Agriculture Education in Cook County!

Chicago High School for Ag Sciences

• **How is agriculture used at your school?** Our students take four years of agricultural courses. The first- and second-year courses include Agricultural Careers & Leadership, Agricultural History and STEM in Agriculture. During the third- and fourth-year students are placed into one of six Ag Industry Career Pathways: Agricultural Finance & Economics, Agricultural Mechanics & Technology, Animal Science, Biotechnology in Agriculture, Food Science & Technology, and Horticulture & Landscape Design.

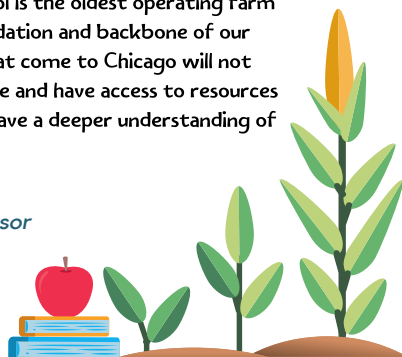
• **How many students are FFA Members?** Every student that enrolls is an FFA Member, this year we have 823 members! We have Class Officer Teams and Advising Teams at every grade level that plan both annual and new activities throughout the year, to engage all our members.

• **What kinds of projects/experiences do your students have?** Inside of class and outside as part of their Supervised Agricultural Experiences, students are exposed to production agricultural practices as well! Our Animal Science Wing is home to our dairy cow, two alpaca pot-bellied pig, 8 goats, 20 chickens. In our market garden and land lab we raise a variety of fresh produce that we sell out of our Farm Stand, at Farmers Markets and donate to local food pantries. Members also annually participate in Agriscience research in their core science classes and agriculture classes.

• **What makes your program unique?** Our school is the oldest operating farm within the Chicago city limits! Agriculture is the foundation and backbone of our program and is the very reason we exist. Students that come to Chicago will not receive another education in the city quite like this one and have access to resources that would allow them to grow their own food and have a deeper understanding of the agricultural industry and supply chain.

\*Ms. Noelle Coronado  
Lead Agriculture Teacher & FFA Chapter Advisor  
Chicago High School for Agricultural Sciences  
3857 West 111th Street Chicago, IL 60655

\*Full article on can be found at  
<https://cookcfb.org/stay-updated/news/ccfb-news>



## Summer Ag Institute

Our Summer Ag Institute returns June 21-24 with an opportunity for teachers to get away from the screen and head outside to experience agriculture. Walk away with lessons, resources, and, most of all, a new understanding of the ag connections to your existing curriculum. Email Diane at [aitc@cookcfb.org](mailto:aitc@cookcfb.org) for more information.

**Cost:** \$70 (members\*) or \$100 (non-members)

\*Farm Bureau membership \$20

Includes: All materials, books, speakers, tours, and supplies. Lunch provided as part of in-

person socially distanced tours. 30 PDCH credits included. Additional \$200 fee required for two grad credits through University of St. Francis.

**Location:**

**Days 1&4** Cook County Farm Bureau, Countryside, IL (subject to change based on COVID restrictions in place as of June 2021 in which case will be virtual)

**Days 2&3**

Tours of local farms/businesses



COOK COUNTY FARM BUREAU AG IN THE CLASSROOM

## Presents Earth Day Teacher Workshop Thursday April 8th 4-5PM

Virtual, with a twist. Register and we will ship you materials to use during the Zoom workshop as well as follow-up lessons and materials.



Email Jill at [Aitc2@cookcfb.org](mailto:Aitc2@cookcfb.org) to reserve a spot

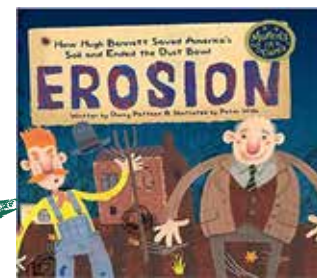


## GET THE DIRT ON ILLINOIS SOIL

Teachers, students, families, individuals that like soil be sure to take advantage of the exciting March opportunities from Illinois Ag in the Classroom



March 4  
Virtual Field Trip  
United Soils, Inc.  
Register at  
<https://iaite.co/fieldtrips>



March 11  
Virtual Author Visit  
Darcy Pattison  
**Erosion**  
Register at  
<https://iaite.co/authorvisits>



March 12  
PD in your PJ's  
Register at:  
<http://bit.ly/PDsPJ>



For more family fun, activities, and lessons visit Illinois Ag in the Classroom at:  
<https://beyondthebarndoor.wordpress.com/>





# Agriculture Adventures for Families

As the snow begins to melt away, signs of soil begin to show. Soil is full of life. It is often said that a handful of soil has more living organisms than there are people on planet Earth. Soils are the stomach of the earth, consuming, digesting, and cycling nutrients and organisms. Soil is a key resource for food production and influences the worldwide distribution of plants, animals, and people. What can we do and what are farmers doing?

Let's take a look.



## Farmers:

### Conservation Tillage

Farmers use conservation tillage, such as no-till and strip-till. These methods leave the previous year's crop residue, such as corn stalks or soybean stubble, on the fields after harvest to protect soil over the winter when nothing is growing



### Cover Crops

Farmers plant cover crops after harvest. Cover crops can add nutrients back into the soil and "cover" the soil- protecting it from wind and water erosion.



### Crop Rotation

Farmers rotate crops. This practice, called crop rotation, is when farmers grow different types of crops in the same area in sequential seasons. It helps ensure that the soil is not depleted of certain nutrients. It also helps reduce soil erosion and increase soil fertility and crop yield.



### Technology

Farmers use technology, such as global positioning systems (GPS) to see pictures, or soil maps, of the land to spot and address erosion.



### Contour Farming

Instead of planting crops in rows of straight lines, farmers plant rows which follow the natural shapes of the land to slow water runoff and reduce erosion.

### Buffers

Farmers use stripes of permanent vegetation, called buffers, to intercept nutrients and sediment carried by surface water, allowing plants to absorb and use the water and nutrients.



## You:

### Cover Soil

Cover bare soil with new plants or mulch. Soil coverings, like mulch, help keep soil in place.



### Plant Vegetation

Plant trees, shrubs, bushes, flowers and other forms of vegetation. Plant roots help prevent soil erosion.

### Manage Waste

Follow guidelines when disposing of contaminants like paint. Waste can hurt the soil as well as human, plant, and animal health.

### Inform Friends

Tell others how important soil is for survival and encourage them to protect soil. More people protecting soil will help make sure it stays in place and stays healthy for future generations.

### Use Walkways

Stay on sidewalks, trails, and other walkways. When you walk where it is designated, you protect soil by not carrying it away on your shoes and clothing.



### Reduce, Reuse & Recycle

Practicing the 3 Rs (reduce, reuse & recycle) every day is important for healthy soil, as well as a healthy environment.

Source: [www.agintheclassroom.org](http://www.agintheclassroom.org)

## March Word Search

- |                     |                   |
|---------------------|-------------------|
| <b>Buffers</b>      | <b>Protection</b> |
| <b>Conservation</b> | <b>Recycle</b>    |
| <b>Contour</b>      | <b>Rotate</b>     |
| <b>Cover</b>        | <b>Soil</b>       |
| <b>Crops</b>        | <b>Tillage</b>    |
| <b>Erosion</b>      | <b>Technology</b> |
| <b>Farmers</b>      | <b>Vegetation</b> |
| <b>Nutrients</b>    | <b>Water</b>      |

F E K R I C M R B S U G B R E  
 A S T N E I R T U N D U I G V  
 R V K V M V B R S O F L A X E  
 M E R O S I O N E F T L B W G  
 E J H E R F K C E C L N W F E  
 R U M Q M Z J R Y I Y C O D T  
 S Y C U E H S P T I W C O C A  
 Y G O L O N H C E T Z H L J T  
 C O N S E R V A T I O N D E I  
 N O I T C E T O R P C F Q H O  
 R O T A T E K E J L R E N F N  
 F R U M P O T D I V O T L P B  
 X H G B D A Y O J C P B S H W  
 X U S K W O S J H T S S S B Y  
 P F Q G Q Z G O J F O Z W G M

Name: \_\_\_\_\_

Phone #: \_\_\_\_\_

Membership #: \_\_\_\_\_

(Membership # is located on front of paper)

If you were to win, check your preference:  
 \_\_\_ Beggar's Pizza GC \_\_\_ HRI GC \_\_\_ 3 Movie Tix  
 (If a choice is not made, movie tickets will be sent)

Deadline is the 20th of each month.

Choose your prize:

Choices include a \$25 Beggar's Pizza Gift Card, a \$25 Home Run Inn Gift Card, OR \*3 AMC Movie Tickets \*AMC Yellow tickets not valid in California, New York & New Jersey .

Complete the Word Search puzzle for your chance to win! Winners will be contacted by mail.

Mail to: Cook Co. Farm Bureau

Ag Adventures Word Search

6438 Joliet Rd

Countryside, IL 60525

Fax to: 708-579-6056

Email to: FBcooperator@gmail.com

Complete and submit an entry every month all in 2021 and your name is automatically entered into an "End of Year" drawing for a gift basket full of ag themed goodies.

Good luck!

## Last Month's Word Search Winner Is...

**Cori Fagan**





## Food Brings Everyone To The Table



On a recent winter evening, my kids announced that we had missed National Blueberry Pancake Day.

“Alexa” had told them about it. They continued to chuckle, ask questions and give commands to this internet-connected smart speaker, which responds to the name Alexa. On their cue, the robotic female voice delivers generally unimportant facts and plays exaggerated noises of passing gas. And that, of course, generates more laughter.

For nearly a pandemic year, our household motto rather has provided a lesson in life: Be happy making the best of the situation. Alexa helps with that. And had I known about this special day for fruity flapjacks on January 28, I would have made blueberry pancakes on that Thursday morning. Just for fun.

Most of my life, I passed off “National Day” events with a no-need attitude. For sake of humility, we didn’t need cause holidays. Maybe we do. Besides making the best of things, this pandemic era has taught us the desperate need to listen more and practice empathy.

That said, agriculture deserves its day, too. National Ag Day is March 23, 2021, a date to

recognize that modern agriculture sustains life. The food, fiber and fuel this industry provides gives Americans the nutritional energy for the day, the shirt on their backs, the shelter overhead, and the renewable fuel to drive away from home when COVID allows.

Economically, agriculture ranks the No. 1 industry in Illinois. Environmentally, farms grow more with fewer resources, essential in a world where the population grows larger by the day. Emotionally, agriculture remains at the core of our nation’s greatness with an overwhelming majority of farms (97% in Illinois) still owned by families, often generations of them.

A century ago, nearly one-third of the American population farmed, suppressing the need for a National Ag Day. More people held a direct farm connection, largely lost now that fewer than 2% of Americans farm. Modern advancements allow people to pursue careers unrelated to farming and for each farmer to feed more than 166 people, a dramatic increase from 25 in the 1960s, according to the American Agriculture Council of America.

Since Thanksgiving, I have intended to replicate the beloved turkey dinner with classic fixings that we anticipate and enjoy only once a year. Why not savor it more. I decided that National Ag Day will dictate the occasion, a fitting way to celebrate how food brings everyone to the table.

*Learn more about National Ag Day at [www.agday.org](http://www.agday.org). About the author: Joanie Stiers’ family grows corn, soybeans and hay and raises beef cattle and backyard chickens in West-Central Illinois.*

## Family Farm and Food Bytes

**GETTING FARM TO TABLE FASTER** (Effingham Daily News) – Researchers from the University of Illinois’ Prairie Research Institute, along with members from the Illinois Specialty Growers Association and Illinois Farm Bureau, are carrying out a six-step process that will culminate with launching pilot programs throughout the state that address food insecurity.

**FRANCE PASSES LAW TO PRESERVE THE SOUNDS AND SMELLS OF THE COUNTRYSIDE** (Travel and Leisure) – French senators unanimously passed a law to protect the “sensory heritage” of the French countryside, including its sounds and smells.

**COVID CHALLENGES SHEEP, LAMB INDUSTRY** (FarmWeek) - The inventory of market sheep and lambs in the state totaled 8000 head as of January 1, 2021, down 11% from the previous year, the National Agricultural Statistics Service Illinois field office reported. The wool market also unraveled in 2020, dropping 9% to 155,000 pounds. Demand was reduced with restrictions during the Easter season and the inability to have family get-togethers.

**SUPER BOWL WEEKEND A TOUCHDOWN FOR POULTRY INDUSTRY** (FarmWeekNow) – Americans consumed a record 1.42 BILLION wings while watching the Super Bowl. That’s a 2% increase from last year, according to the National Chicken Council’s annual Wing Report.

**AFTER THE SUCCESS OF LOGAN SQUARE’S DILL PICKLE, RESIDENTS ACROSS THE CHICAGO AREA ARE LOOKING TO LAUNCH FOOD CO-OPS** (Chicago Tribune) – The only operating grocery food cooperative in Chicago, Logan Square’s Dill Pickle is a community-owned store run by its members. Now residents around the region — from Rogers Park to Lombard to Woodstock — are in different stages of trying to launch more food co-ops.

**TAKE A (VIRTUAL) TRIP TO THE PRO FOOTBALL HALL OF FAME** (FarmWeekNow) - Did you miss Illinois Ag in the Classroom’s tour

of the Professional Hall of Fame? No worries. You can visit IAITC’s blog and watch the YouTube video anytime for your own private tour. You’ll learn many interesting facts about the history of football and its correlation with agriculture.

**GENERAL MILLS PUTS FAITH IN CEREALS, ICE CREAM AND MEXICAN FOOD FOR GROWTH** (Reuters) – General Mills Inc will focus on eight key markets and five global product categories, including ice cream, cereal and Mexican meals, as the Betty Crocker cake mixes maker seeks to reach its long-term goal of up to 3% growth.

**GM AIMS TO END SALE OF GASOLINE, DIESEL-POWERED CARS, SUVs, LIGHT TRUCKS BY 2035** (Reuters) – General Motors Co said Thursday it was setting a goal to sell all its new cars, SUVs and light pickup trucks with zero tailpipe emissions by 2035, a dramatic shift by the largest U.S. automaker away from gasoline and diesel engines.

**EIA PROJECTS HIGHER FUEL, ENERGY PRICES THIS YEAR** (FarmWeekNow) - As temperatures drop, fuel and energy usage and prices rise. The Energy Information Administration projects spending this winter will increase by 6% for natural gas, 7% for electricity and 14% for propane to heat U.S. homes compared to last year. Meanwhile, EIA projects retail gasoline prices could average \$2.44 per gallon in 2021, up 26 cents from last year.

### About Family Farm and Food Bytes:

*This is a collection of articles gathered from both mainstream and agriculture media and is designed to keep you informed as a member and leader within the Cook County Farm Bureau® organization. The articles summarized above are not intended to represent Cook County Farm Bureau policy or positions, but rather to provide members an idea of what is being reported regionally, nationally, and globally.*

### ILLINOIS FARM FAMILIES PRESENTS

INNOVATION  
**GROWS**  
HERE™

**CHAD BELL**  
RAISING PIGS WITH  
THE PRINCIPLES OF  
REDUCE, REUSE, RECYCLE

For farmers, growing and raising our food means continuous improvement. It means discovering ways to do things better and finding solutions to complex problems. And we’re making decisions every day that advance our methods for raising animals and growing crops. That’s why innovation grows here.

Innovation on the farm – self-steering equipment, field-mapping drones, animal health monitors – means less environmental impact, safer food and a healthier world. In Illinois, farmers use the latest in science and technology to advance the way we grow and raise food that is better for you and our world.

Find out why firsthand from the farmers who are bringing this innovation to life.

[www.WatchUsGrow.org/innovation-grows-here](http://www.WatchUsGrow.org/innovation-grows-here)

**We offer wet hosing, bulk tank fills and package lubricants – D.E.F, Oil, Hydraulic, Diesel and Gas for all your needs.**

**We are a 24/7 Fuel Supplier servicing Illinois – Wisconsin – Indiana**

**Call us today at 847-994-3010 or visit us online at [www.luckysenergy.com](http://www.luckysenergy.com)**

**Growing To Serve You Better**

### Cook County Farm Bureau Board Action

The Cook County Farm Bureau continues to support the efforts of the Chicagoland and NW Indiana Ronald McDonald House by making a cash donation to the charity. The CCFB partnered with RMH for years as a part of Food Checkout Day and values the efforts made locally by the organization.



## Manifolds, Manolos, and Manure



By Bona Heinsohn,  
CCFB Director of Gov.  
Affairs and Public  
Relations

I'm not exactly a joiner. Over the years, I've played sports. Joined clubs. Participated in leadership groups. But that's about the extent of it. I'm not going to go out of my way to meet people. It's the only

child thing. This spring I'm trying something new for me: an online book club. Over three meetings, participants will explore *Hungry* by Eve Turow-Paul. *Hungry* explores today's global food and lifestyle culture.

The book club makes me wonder, what's on your nightstand?

On one corner I have *The Illinois Governors Mostly Good and Competent*. As I was packing a couple of months ago, I rediscovered this light read and couldn't pass up the 325-pages of Illinois history complete with 2007 summary of former Governor Rod Blagojevich. As a reminder Blagojevich was impeached in 2009. *The Illinois Governors Mostly Good and Competent* was published by the Center for State Policy and Leadership at the University of Illinois in Springfield. Soon to be 20 years ago, I completed my legislative internship through the center. Perhaps I'm a little attached.

Also on my nightstand is *Junkyard Dogs* by Craig Johnson. My attachment to westerns surprises even my farmer. *Junkyard Dogs* is the sixth installment of the "Longmire" series and features Absaroka County Sheriff Walt Longmire, Henry Standing Bear, Deputy Victoria Moretti, Deputy Santiago "Sancho" Saizarbitoria, and "Dog", Longmire's canine companion. Tempers run strong in the depth of winter in Durant, Wyoming especially when multi-million-dollar ranchettes are involved. I'm most interested in learning whether or not Sancho stays with the sheriff's department or returns to corrections in Rawlins. I wish I

could say that I've read this series in order, but I skipped book five because it wasn't at the library and have read books seven and twelve through fifteen.

Rounding out my nightstand is *The Hidden Man* by David Ellis, the lawyer who infamously prosecuted and convicted Blagojevich in his impeachment trial before the Illinois Senate. *The Hidden Man* is the first installment of Jason Kolarich. Kolarich, like Ellis, won a high-profile political corruption trial.

On my blue-eyed girl's nightstand is *Rescue* by Jessie Haas. *Rescue* explores the life of twelve-year old Joni who has always lived happily on her family's sheep farm until Chess moves in nearby. Chess is a budding animal rights activist. Even though its challenging to be friends, together the girls explore questions about animal care and ownership. Prior to *Rescue* it was *Zoo* by James Patterson. *Rescue* is a science fiction thriller released in 2012 and turned into a CBS drama in 2015. It ran for three seasons before being cancelled. I read the book and binge watched the series on Netflix.

On my big-little boy's nightstand is *Dragon of the Red Dawn* by Mary Pope Osborne. In this installment of *The Magic Treehouse*, Jack and Annie travel to the capital city of Edo (now, Tokyo), in ancient Japan in the 1600s. Prior to *Dragon of the Red Dawn* was *Warriors in Winter*, also a Jack and Annie book. Candidly, I've lost track of how many *The Magic Treehouse* books we've read since kindergarten.

Every now and then I like to indulge in a light reading. Sometimes its Harry Potter. Katniss. Tris. Thomas. And sometimes its Bella. This time its *Breaking Dawn* on audiobook in my car. Before that it was *Eclipse*, *New Moon*, and *Twilight*. Even I like a little vampire with my Illinois history. Instagram. Westerns. And courthouses.

Bona can be reached at [Bona@cookcfb.org](mailto:Bona@cookcfb.org)

## Farmer Members Opposed to Tax Increase

In January, Cook County Farm Bureau® released the first of a series of Micro Viewpoint Surveys. These surveys are designed to engage voting members in policy discussions and to gauge voting member support of pending pertinent issues.

The January survey asked voting members to weigh in on the proposed property tax increase for the Forest Preserve District. Fifty-three percent of members responding opposed a property tax increase.

Of those members supporting a property tax increase, the majority of members felt that the additional funds should be allocated to conservation and habitat restoration projects,

acquisition of 20,000 additional acreage, and trail maintenance.

The survey also asked members about the avenues that local governments should consider when looking to fill the budget gaps created by the pandemic. A majority of members responding support hiring freezes, cutting programs, cutting services, and refinancing debt as temporary solutions to the budget deficit.

\*Additional surveys will be sent to voting members in the future. If you have any thoughts or comments you'd like to share, please contact Bona Heinsohn at [bona@cookcfb.org](mailto:bona@cookcfb.org).

## Farm Bureau Releases Updated Transportation Guide

In an effort to assist local farmers and truck operators, Farm Bureau has released an updated copy of "Rules for the Road" featuring a select collection of information on motor vehicle regulations. Topics

covered include covered farm vehicle (CFV) exemption, medical card, hours of service, USDOT number and the UCR, and licensing. The guide is available at <https://cookcfb.org/ccfb/policy-and-action/issues>.



Farm Bureau staff Bona Heinsohn discussed Farm Bureau's 2021 legislative priorities and items of interest during a February briefing. The recording is available at <https://cookcfb.org/ccfb/policy-and-action/legislative-priorities>.

## Farm Bureau Supports Additional Requirements for Taxing Districts

Cook County Farm Bureau® sent the following communication to commissioners in support of Cook County Treasurer Maria Pappas' amendment to the Taxing District Debt Disclosure Ordinance:

Cook County Farm Bureau® (Cook CFB) respectfully requests support for Ordinance 21-1048, an amendment to the Taxing District Debt Disclosure Ordinance.

Ordinance 21-1048 stipulates that taxing districts, including tax increment financing (TIF) districts are required to disclose:

- Information related to each TIF district redevelopment project.
- Total dollar amount of each TIF district redevelopment project.
- Name of vendor, contractor, or tax district, amount paid, and category of each eligible TIF district redevelopment project.
- All administrative, management, and staff costs, whether paid directly by the TIF district or paid by a taxing district and reimbursed with the funds from the special allocation fund, the name of the employee, job title, and amount paid.
- All contracts that the TIF district's increment advisor and/or consultants have entered into with entities or persons that have received, or are receiving, payments financed by tax increment revenues produced by the same redevelopment project area, copies of all contracts, in an electronic format.

- Economic Disclosure Statements for all vendors and/or contacts to the TIF district.
- Amounts re-allocated from one TIF district redevelopment project to another, including the name of the TIF redevelopment project from which the funds were transferred, the name of the TIF redevelopment project to which the funds were transferred, and any and all documentation reflecting the reason for the transfer.

The ordinance also provides that each TIF district shall also provide the Cook County Treasurer's Office with the above information for the past five fiscal years.

Farm Bureau policy #121 (State and Local Finance) (p. 94, l. 45-46) supports requiring local governments to publicly disclosure information on TIF districts including the locations of the districts, funds generated, use of funds, and contractors.

Organized in 1920, Cook County Farm Bureau® is dedicated to bridging the gap between farmers and urban consumers. Through education programs targeting youth and their parents and programs designed to connect farmers with potential consumers, Farm Bureau members are actively engaging in conversations about food and the shared values between farmers and consumers.

Members interested in providing any comments or feedback concerning this or another issue is encouraged to contact Bona Heinsohn at 708-354-3276.

## Farm Bureau Supports Proper Use of Atrazine

Cook County Farm Bureau® sent the following letter to the U.S. Environmental Protection Agency (EPA):

Organized in 1920, Cook County Farm Bureau® is dedicated to bridging the gap between farmers and urban consumers. Through education programs targeting youth and their parents and programs designed to connect farmers with potential consumers, Farm Bureau members are actively engaging in conversations about food and the shared values between farmers and consumers.

We recognize that Illinois crop farmers rely on atrazine to grow the food, fuel, and fiber that powers the American economy.

The use of this herbicide has several beneficial outcomes in crop production. It is an important tool for weed mitigation in several crops. Its use with crops, such as

corn, enables added environmental benefits for farmers seeking to utilize conservation tillage and no-till practices that conserve soil, preserve nutrients, improve water quality, and reduce greenhouse gas emissions. Without atrazine, many farmers would not be able to utilize these methods that result in positive environmental outcomes.

We encourage the U.S. EPA to make its determinations about the potential effects of atrazine on threatened or endangered species using a process that is transparent and based on the best available science. The future availability of atrazine is critical to the success of my farm and America's agriculture industry.

Members are encouraged to contact Bona Heinsohn via email at [bona@cookcfb.org](mailto:bona@cookcfb.org) or 708-354-3276 with any questions or concerns.



## Soil Testing Kits Available 2021

Cook County Farm Bureau offers both members and non-members an opportunity to test their garden or lawn soil by purchasing a soil testing kit. Soil, in its natural state, is rarely fertile enough for the best growth of plants. Usually, it is necessary to supplement the earth's store of plant nutrients before we can obtain the most vigorous lawn, the most abundant and brilliant flowers, the most aesthetically satisfying trees/shrubs and the greatest yield of tasty and nutritious vegetables, or crops. Test your soil pH, potassium, phosphorous and other key elements to begin the soil improvement process.

Complete kit guidelines and instructions, as well as mailing information included in the

test kit and members will receive test results and basic recommendations within two weeks.

### Farm Bureau Soil Test Kit discounted member pricing:

1 sample Soil Test Kit: \$25 | 2 sample kit: \$32 | 3 sample kit: \$50 | 1 sample Soil & Lead Test Kit: \$53 | 1 sample Lead Only Test Kit: \$45. Non-member pricing also available.

Soil Kits are available at the Cook County Farm Bureau for by phone at 708-354-3276 using a Visa, MasterCard or Discover at no additional charge. Costs are subject to change.

## Cook County Financial Representatives of the Month

The Financial Representative of the Month program is designed by COUNTRY Financial Agency Managers of Cook County to recognize overall Insurance Leaders in Life, Disability, Auto, Home, and Health production during the month. The agent earns the award through efforts to provide quality service to existing and new clients. Listed below are the various agents honored by their agency manager with the Financial Representative of the Month designation.



### \* Violetta Kaminska

Chicago North Agency, Victoria Nygren, Agency Manager

Violetta Kaminska has been named Career Financial Representative of the month for January 2021. Her office is located at 3339 N. Harlem Ave., in Chicago, IL. Her phone number is 773-427-2951. Violetta has been a Financial Representative since April 2009.



### Natasha Hodzic

Chicago North Agency, Victoria Nygren, Agency Manager

Natasha Hodzic has been named Employee Financial Representative of the month for January 2021. Her office is located at 3339 N. Harlem Ave. in Chicago, IL. Her phone number is 773-427-2851. Natasha has been a Financial Representative since November 2019.



### Joe Munch

Chicago Northeast, Sharon Stemke, Agency Manager

Joe Munch has been named Career Financial Representative of the month for January 2021. His office is located at 4200 W. Euclid Ave., Ste. E in Rolling Meadows, IL. His phone number is 847-963-8835. Joe has been a Career Financial Representative since February 2015.



### Aaron Del Mar

Chicago Northeast, Sharon Stemke, Agency Manager

Aaron Del Mar has been named Employee Financial Representative of the month for December 2020. His office is located at 25 NW Point Blvd., Ste.850 in Elk Grove Village, IL. His phone number is 847-794-1224. Aaron has been a Financial Representative since December 2018.



### \*John Doherty

Chicago Northwest, Kevin Gomes, Agency Manager

John Doherty has been named Career Financial Representative of the month for January 2021. His office is located at 10A w. Schaumburg Rd., Schaumburg, IL. His phone number is 847-519-9922. John has been a Financial Representative since May 1992.



### \*Renata Bondarowicz

Chicago Northwest, Kevin Gomes, Agency Manager

Renata Bondarowicz has been named Employee Financial Representative of the month for January 2021. Her office is located at 1515 E. Woodfield Rd., Ste. 930 in Schaumburg, IL. Her phone number is 847-891-6388. Renata has been a Financial Representative since July 2016.



### \*Tom Geraghty

Orland Park Agency, Cary Tate, Agency Manager

Tom Geraghty has been named Career Financial Representative of the Month for January 2021. His office is located at 5003 W. 95TH St., in Oak Lawn, IL. His phone number is 708-425-9700. Tom has been a Financial Representative since December 1982.



### Kurt Husein

Orland Park Agency, Cary Tate, Agency Manager

Kurt Husein has been named Employee Financial Representative of the Month for January 2021. His office is located at 12130 S. Harlem Ave., Unit A in Palos Heights, IL. His phone is 708-480-5099. Kurt has been a Financial Representative since December 2017.

\*Indicates that this Financial Representative is a CCFB Financial Certified Representative. The Cook County Farm Bureau Certified Financial Representative Program is designed to strengthen the partnership and relationship shared by Financial Representatives from Country Financial with the Cook County Farm Bureau organization.

## Cook County Farm Bureau members receive an upgraded John Deere Rewards membership

(Platinum 1) – which unlocks extra discounts on equipment, parts, and merchandise.

Register today, and explore all that Rewards has to offer.



### Check out the savings on the following equipment categories:

- Commercial Mowing -- \$200 to \$1,700 off
- Residential Mowing -- \$50 to \$150 off
- Utility Vehicles -- \$100 to \$250 off
- Tractors -- \$150 to \$250 off
- Compact Construction -- \$550 to \$1,400 off
- Must be a valid Farm Bureau member for 30 days.
- A valid member e-mail address is required for eligibility.

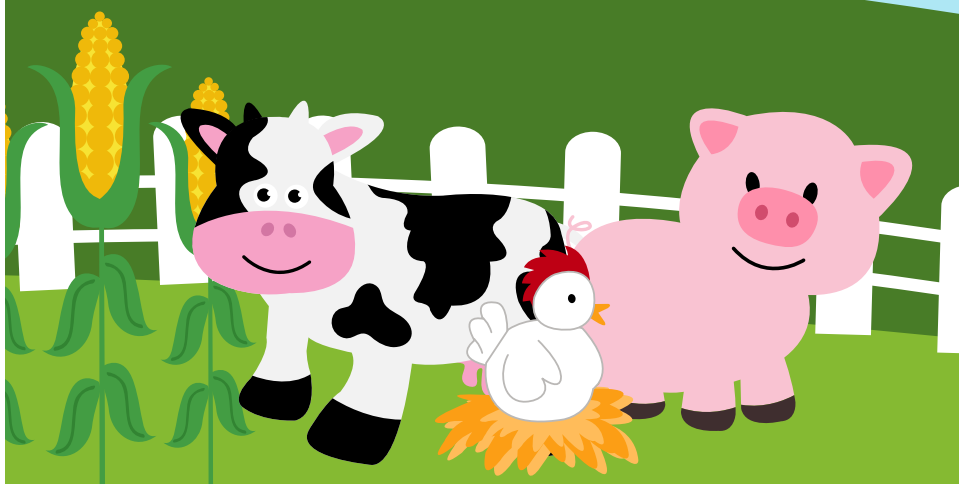


Visit [JohnDeere.com/FarmBureau](http://JohnDeere.com/FarmBureau) today to register!



## NATIONAL AG DAY March 23, 2021

Farmers grow safe and healthy food.



- Illinois is ranked 25th in egg production among the United States.
- Sweetcorn accounts for almost 2% of corn grown in Illinois.
- Illinois ranks 21st in milk production in the United States.
- 4-ounces of high-quality protein, like beef, provides your body with adequate energy.
- Illinois farmers produce nearly 2 billion pounds of pork each year.



### SUPER KISS CAR WASH

Featuring Touch-Less Car Wash (no spinning brushes), Revitalizer, Clearcoat Polish, Clearcoat Protectant, Rust Inhibitor, Underspray, Brake Dust Remover, 5-Day Guarantee  
**Member Price: \$11.50 savings of \$3.50 (Delta Sonic price is \$15)**

### DELUXE CAR WASH

Featuring Touch-Less Car Wash (no spinning brushes), Revitalizer, Brake Dust Remover, 24-Hour Guarantee  
**Member Price: \$8.00 savings of \$2.00 (Delta Sonic price is \$10)**

### 10 MINUTE INTERIOR CLEANING

Interior Vacuumed, Dashcreame Applied, Floormats Cleaned w/Super Foam, Fragrance Applied, Glass Polished, Door Jambs Cleaned, Tires Hand Dressed

• **Larger Vehicles (Trucks, Minivans, Vans, Jeeps, etc.) - Member Price: \$16.00 savings of \$2.99 (Delta Sonic price is \$18.99)**

• **Smaller Vehicles - Member Price: \$14.50 savings of \$2.49 (Delta Sonic price is \$16.99)**



# Bee All About It

**Questionnaire:**

**What type of Agriculture do you**

**“specialize” in?** *Apiculture – We raise our own Queens, grow colonies of bees which produce a Honey Crop, rescue honey bee swarms out of homes and structures, and teach others about the culture of beekeeping.*

**How did you get into Beekeeping and**

**Swarm Catching?** *My mom, a master-gardener and beekeeper came to visit one year and insisted that I needed a beehive for my back-yard garden. She enrolled me in a class and I won a beehive as the door prize. Then I got the “bug.” Went from 1 hive first year, to 12, to 25, to 40 and upwards of 100 colonies in the years there after. As for catching swarms, I got a call from the CookDuPage Beekeepers Association swarm line – a tornado like cloud of bees had descended upon a home and could I help!*

**What is your favorite honey product or**

**type of honey?** *Comb Honey from our hives under our basswood trees at the farm. I’m also partial to our “Pumpkin Honey” which we pull off the supers after our bees have finished pollinating the pumpkins late summer.*

**What is your favorite farm/apiary related**

**memory?** *Checking on our hives at midnight in an apple orchard we were pollinating. Our Australian Shepherd, Rigby, got loose and took off down a row of trees. Why it’s so memorable: he was a cancer survivor and was missing his front leg. But that did not slow the three-wheeler down a bit. I think the bunny he was chasing got away, but I’ll never forget that look on his face when I caught up with him. Yes, Pete, I just had to go for it!*

**When you are at the apiary, what are**

**you doing?** *Making sure the bees have all the resources they need to grow their strength / numbers. Checking-in on their health and well-being.*

**What is the most unusual question or**

**request you have received?** *We’ve had a number of folks ask us to buy bees for bee-venom-therapy. Stinging themselves to ease the symptoms of Lyme’s disease and arthritis. Hey, it hurts so good.... And truthfully, my hands feel much better during bee season!*

**What is your most valuable piece of**

**equipment?** *Tough question: Off Season - My router table – use it to make our wooden-ware beehives; In Season – the J-Hook Hive Tool, wish I had been the inventor of this handy implement! Can use it to open a hive, remove frames, even open a bottle of beer!*

**What brings joy to you?** *Seeing the buds*

*blossom on our silver maple, cottonwood and basswood trees, seeing lots of dandelions and clover at the farm. (It’s all protein for our bees!) Relocating a*



Pete Soltesz

*swarm of honey bees into our bee yard or rescuing a bumble bee nest from an anxious homeowner intent on eviction! Opening the gate valve on our radial-honey-extractor, and seeing the honey flow.*

**How long have you been a Farm Bureau member?** *Yes -7 years*

**Member Name:** *Pete Soltesz*

**Business Name:** *Bee All About It*

**Contact Info:** *Pete Soltesz*

**Phone & Email:** *(630) 207-4255*

**Facebook:** <https://www.facebook.com/Cook-DuPage-Beekeepers-Association-170866152953485>

**Brief History of Beekeeping Background or Business:**

*Established in 2015, Pete Soltesz is a founder and the Chief Operating Officer of “Bee All About It,” a local, Cook County, bee company engaged in producing honey bees and queens for purchase, yielding a honey crop, providing pollination services and producing supplements for the cosmetic, nutrition, and wellness industries. Pete also provides consulting services to other beekeepers, schools and associations. And, he manages colonies for landowners used in re-zoning for tax-assessment. Pete is part of a select group of beekeepers licensed and certified by the Illinois State Department of Health to remove honey bees from structures. He is the current President of the Cook DuPage Beekeepers Association, one of the largest bee clubs in the Midwest. And he formerly held the position of Vice President on the board of Directors for the Illinois State Beekeepers Association.*

*He has been involved with honey bees since his youth, and upon moving to Illinois in 2007, has consistently grown his colony count in his apiary from local feral stock and overwintered queens. Since 2015, thru the Cook County Farm Bureau, he has been teaching beginner beekeepers how to get started in the field.*

*He can be reached by phone at 630-207-4255 and by email at President.CDBA@yahoo.com*

*Full questionnaire can be found at <https://cookcfb.org/stay-updated/news/ccfb-news>*

## Classifieds

All ads that we receive for The Co-Operator are also listed on our website at [cookcfb.org/membership/classifieds](http://cookcfb.org/membership/classifieds). If you have a photo of the item(s) that you are selling you can email it to us to include it on our ‘Classifieds’ page on our website only along with your ad.

Email your ad (and photo if you have one) to [fbcooperator@gmail.com](mailto:fbcooperator@gmail.com). Please be sure to include your full name, Farm Bureau number, and phone number. Deadline for Classified ads is the 17th of each month. Any ads submitted after the 17th will appear in the following month’s Co-Operator. Members may run up to four non-commercial classified ads annually for free. Any ads submitted after the fourth, will be charged.

If mailing your ad, please mail to: Cook County Farm Bureau, Attention: Classified Ads, 6438 Joliet Rd, Countryside, IL 60525. You can also fax your ad to 708-579-6056.

## For Sale

Price reduced, many possibilities, 2350 sq. ft. brick commercial (Zone B) building, with full basement, excellent location, 1 mile from expressway, 3 blocks from Arlington Park train station and Arlington Park racetrack. Call Rita 847-259-9339.

Cemetery plot- Mount Auburn Cemetery, Stickney IL includes cement surround and transfer fees. Cemetery price is \$3988, asking \$3500 or best offer. Call 847-463-6184.

Cybex ARC Trainer 620A. This is a commercial quality cardio exercise trainer. Includes TV monitor. Awesome workouts. No electric needed so you can place this machine anywhere in your house or gym. Has multiple programs, heartrate monitoring, inclines and much more. Call Dave for details, test rides and photos 312-951-6412. \$2400 obo.

Floor model 16 speed standing #4 HP drill press \$250.00  
Wood cutting Band saw 14X14 table 1/2 HP 91-inch blade \$250.00  
Table saw floor model 10-inch blade \$300.00.  
Kenmore tip-Toe Mangle \$100.00, Amana Radar Range 1975 model \$120.00, Pilco B&W TV in blonde cabinet \$100.00  
All Items are in working order. Buyer must pick-up from Tinley Park Area Call Tom 708 429-1775.

New ivory wedding gown, never worn, never altered, sized 10, full length with medium length train, bodice and hemline trimmed with lace and pearls, sweetheart neckline with lace straps over the shoulders or could be strapless, back closure is a zipper with tiny button closure

covering it, Original cost \$3600. Make an offer. Text 847-204-9069 to see pictures.

## For Rent

Vacation Villas at Fantasy World II Resort in Kissimmee, Florida. Seven (7) nights in onebedroom suite, full kitchen, outdoor swimming pool, sleeps four (4). \$650 for seven (7) nights. No presentation is required. Call Ms. Day at 708-347-9369 for availability.

## Wanted

Wanting to buy your HO scale or N scale electric train engines, cars, buildings, or anything train related. Do you have electric trains in your closet, basement, crawl space, attic or garage that you’re not using? I buy train items from just a few pieces to hundreds of pieces at a time. Why sell them bit by bit, I’ll offer you a price on all you have! TURN THOSE UNWANTED TRAIN ITEMS INTO CASH and give me a call! I also buy slot cars. Call Ron at 630-272-4433.

Wanted vintage plastic dealer promo cars & trucks, cast iron and tin toys, toy outboard motors also windup and slot cars. Call Jim at 708-361-8230.

**For commercial promo & discounts go to our member to member link: <https://cookcfb.org/membership/member-to-member>**

## FREE CLASSIFIED ADS

For Cook County Farm Bureau members  
All Cook County Farm Bureau members may run four non-commercial classified ads annually for free in the Co-Operator. Only items of personal property will be accepted. Ads must be in the office by the 17th of each month.

Category:

For Sale  For Rent  Wanted

To place an ad, call the CCFB office at 708-354-3276 or mail details to Cook County Farm Bureau, 6438 Joliet Road, Countryside, IL 60525. You can also fax your ad to 708-579-6056 or email to [juanita@cookcfb.org](mailto:juanita@cookcfb.org).  
Non-member ad rate: \$.75 per word; \$15.00 minimum

## DINNER

### Put pork on your plate!

Pork is naturally low in sodium and a “good” source of potassium – two nutrients that, when coupled, can help regulate blood pressure. Illinois is ranked 4th in the United States in pork production.



## BREAKFAST

### An “EGG”cellent start to your morning!

One egg provides 10 to 13 percent of the daily reference value for protein— as much as one ounce of lean meat, fish or poultry.



## LUNCH

Potatoes are the most popular vegetables in the United States.

Although there are more than 100 known varieties, about six varieties make up the entire commercial market.



## This Month in Cook County Agriculture

**2020 Small Farms Winter Webinar Series continues in March 2021 -**

The University of Illinois Extension presents a weekly educational series for the small farm community. This series will provide practical knowledge on emerging topics which advance local food production in Illinois. These online presentations will give small farm producers a look at how leading practices in production, management, and marketing enable operations to improve profitability and sustainability.

**Webinars will be held from noon -1:00 pm on Thursdays and are free.**

- **March 5, 2020 Selling through Food**

**Hubs and Co-ops: A Growers**

- **March 12, 2020 Getting Started in Drip Irrigation**
- **March 20, 2020 The Basics for Goats and Sheep**

Webinar info and registration link online at: <https://extension.illinois.edu/events/2020-01-30-2020-small-farms-winter-webinar-series-0>

**Chicago Farmers Organization (March Webinar)**

Archer Daniels Midland Corporation with featured speaker, Ian Pinner, Senior VP Chief Strategist and Innovation Officer and President of the company’s Health and Wellness division

**Date/Time:** March 8, 2021, 12-1:30pm  
**Price:** Free for Chicago Farmers members, \$15 for nonmembers  
**Registration and details:** [www.Chicagofarmers.org](http://www.Chicagofarmers.org)

**Community Garden Training**

University of Illinois Extension will host a Virtual School and Community Garden Training via Zoom.

**Date/Time:** March 13, 9am-1pm  
**Registration and details:** <https://extension.illinois.edu/cook/school-and-community-gardening-resources>  
*Members of the Cook County Farm Bureau, may promote their farm related activity, event, workshop, or gathering by sending an email to*

*membershipdebbie@cookcfb.org The information must be received by the 15th of the month prior to the publishing of next month’s issue of The Co-Operator. Please include your name, the event date/time, a one sentence description of the event, and how a reader can obtain further information in the email. We will edit submissions based on space allowances in the publication.*

*In addition, we will post farm, garden or livestock related photos on our social media platform if you forward those to membershipdebbie@cookcfb.org .*

*If you have questions about this way to promote your events, please contact Commodities/Marketing programming coordinator, Debbie Voltz, at 708-354-3276.*



# Programs, Workshops, and Webinars

For Members, Farmers, Teachers, Landowners, Foodies, Business owners, and those that want new experiences and to have a great time!

Register today for the following great programs by calling the office at 708-354-3276 or at [www.cookcfb.org](http://www.cookcfb.org)



### Hemp: Business Side of the Crop Lunch & Learn Webinar

Grab some lunch and learn from local hemp industry expert, KifCure, about soil and seed genetics, industry update, best practices, industry developments to boost profitability and Hemp/Cannaboid state database project.

**Date:** Wednesday, March 24, 2021

**Time:** 12-1 PM

**Location:** Webinar via Zoom or call in by phone – info and link will be sent the day before class

**Price:** Free for members & guests

**Registration:** Call the Farm Bureau at 708-354-3276

or online at the Member Center at [www.cookcfb.org](http://www.cookcfb.org).



### Workshop on Preparing Wills and Trusts and Transferring Non-Titled Property

The program will inform you what types of information you will need to gather and decisions you will need to make before meeting with a lawyer to prepare a will or trust.

**Date:** Thursday, March 25

**Time:** 6:30-9:00 PM

**Location:** Zoom (the zoom link will be emailed to all participants the evening before the class)

**Price:** No charge for Cook County Farm Bureau

**Members.** \$10 for non-members

**Registration:** Call the CCFB at 708-354-3276 or online

at the Member Center at [www.cookcfb.org](http://www.cookcfb.org).



### SHOP LOCAL Webinar for Local Food or Farm Businesses

Learn how to Register or Log In to Your Local Food or Farm Business Profile! Our Shop Local directory provides simple yet powerful search tools to connect growers, buyers, sellers, and consumers. Join and register your business today. Once you join, you can login and access your account profile as often as you need. The more information you place on your profile, the more searchable you become to the consumer and across a joint network of affiliations.

You can also add an e-commerce store or link to an existing store.

**Date:** Wednesday, March 31, 2021

**Time:** 12 PM

**Location:** Webinar via Zoom or call in by phone – info and link will be sent the day before class

**Price:** Free for members & guests

**Registration:** Call the Farm Bureau at 708-354-3276 or online at the Member Center at [www.cookcfb.org](http://www.cookcfb.org).



### Conceal and Carry Class 16-hour training

The ABC's of self-defense, tools and tactics to keep you safe. No FOID is required to complete this class and obtain your training certificate. Must be 21 to participate. Please bring a pen and lunch both days.

**Date:** Saturday, April 17 and Sunday, April 18

**Time:** 9AM -5PM (both days)

**Location:** CCFB building and Villa Park VFW (The gun range will be held at the VFW on Sunday afternoon.)

**Price:** \$120 (The price includes range fee, targets, classroom materials, gun rental, ammunition, eye and ear protection.)

**Registration/Description:** Call the CCFB at 708-354-3276



### Pollinator Pot Workshop at Ray's Quality Greenhouse Limited In-Person and Take & Make via Zoom

Create your own pollinator friendly pot to display on your porch/patio this summer. This beautiful pot is designed to attract butterflies, hummingbirds and bees. During class we will also share delicious recipes so you can enjoy bees, cookies and cocktails while admiring your new pot!

**Date:** Tuesday, May 4, 2021

**Time:** 2:00 PM

**Location:** Greenhouse location: 117 231st St, Steger, IL 60475 or via live zoom

**Price:** \$30.00 for members and guest; includes pot with soil, plantings, fertilizer, recipes

**In-Person:** Limited to 10 in person registrations

**Take & Make via Zoom:** Unlimited take & make via zoom with prior curbside pickup arrangements

**Registration:** Call the Farm Bureau at 708-354-3276 or online at the Member Center at [www.cookcfb.org](http://www.cookcfb.org).

## Save the Date!

# Cook County Farm Bureau MEMBER APPRECIATION WEEK

April 19 - April 23

Watch the April edition of the Co-Operator for more details. As a teaser, each day, we will offer a grand prize gift basket for a lucky member with other opportunities for prizes and gifts throughout the week.

## Observe National Ag Day... March 23, 2021

- Did you know there are more than 72,000 farms in Illinois, 96% of which are family owned and operated? Combined, these farms generate more than \$19 billion in gross sales, stimulating local economies.
- Illinois farmers care for more than 27 million acres of farmland, which makes up about 75% of the state's land mass. Learn more about Illinois farmers' commitment to continuous improvement at [www.watchusgrow.org/innovation-grows-here](http://www.watchusgrow.org/innovation-grows-here).
- Did you know agriculture encompasses much more than farming? Today, we celebrate an entire industry, including our veterinarians, mechanics, agriculture teachers, truck drivers, food scientists, and more!
- More than 40 different types of food crops commonly found in farmers markets, restaurants, and grocery store shelves are grown right here in Illinois. Learn when to find local Cook County and Illinois produce at the peak of freshness at [www.cookcfb.org/discoverlocal/shoplocal](http://www.cookcfb.org/discoverlocal/shoplocal) Save the Season's Eatings information below for your farm stand and farmers market shopping experiences in 2021!

## SEASON'S EATINGS

Wondering when a certain type of produce will be making its way from the field to your local farmers market or grocery store? Save this graphic for quick reference of when your favorite fruits and vegetables will be in season!

PRODUCT	JAN	FEB	MAR	APR	MAY	JUN	JUL	AUG	SEP	OCT	NOV	DEC
Apples						J	J	A	S	O	N	
Artichokes							J	A				
Asparagus				A	M	J						
Beans						J	J	A				
Bell Peppers							J	A	S	O	N	
Berries						J	J	A	S			
Cabbage					M	J	J		S	O	N	
Carrots						J	J	A	S			
Cauliflower								A	S	O		
Cherries					M	J	J					
Corn							J	A	S	O		
Cucumbers								A	S	O		
Eggplant						J	J	A	S	O		
Garlic						J	J	A	S	O	N	
Grapes							J	A	S	O		
Greens					M					O	N	
Herbs								A	S	O		
Horseradish						J	J	A	S	O	N	
Leeks					M	J	J	A				
Lettuce				A	M	J		A	S	O		
Melons						J	J	A	S			
Nectarines						J	J	A	S			
Okra						J	J	A	S	O		
Onions				A	M	J	J	A	S	O	N	
Peaches						J	J	A	S			
Peas				A	M	J	J	A	S	O	N	
Plums						J	J	A	S	O		
Potatoes						J	J	A	S	O	N	
Pumpkins								A	S	O	N	
Radishes					M	J	J	A	S	O		
Rhubarb					M	J	J	A	S	O		
Spinach				A	M	J			S	O	N	
Sprouts					M							
Squash					M	J	J	A	S	O	N	
Strawberries					M	J						
Sweet Potatoes								A	S	O	N	
Tomatoes						J	J	A	S	O		
Turnips						J	J	A	S	O		

Source: Illinois Department of Agriculture

For your comprehensive access to membership discounts & offers, go to

## Go to [www.cookcfb.org/membership](http://www.cookcfb.org/membership)